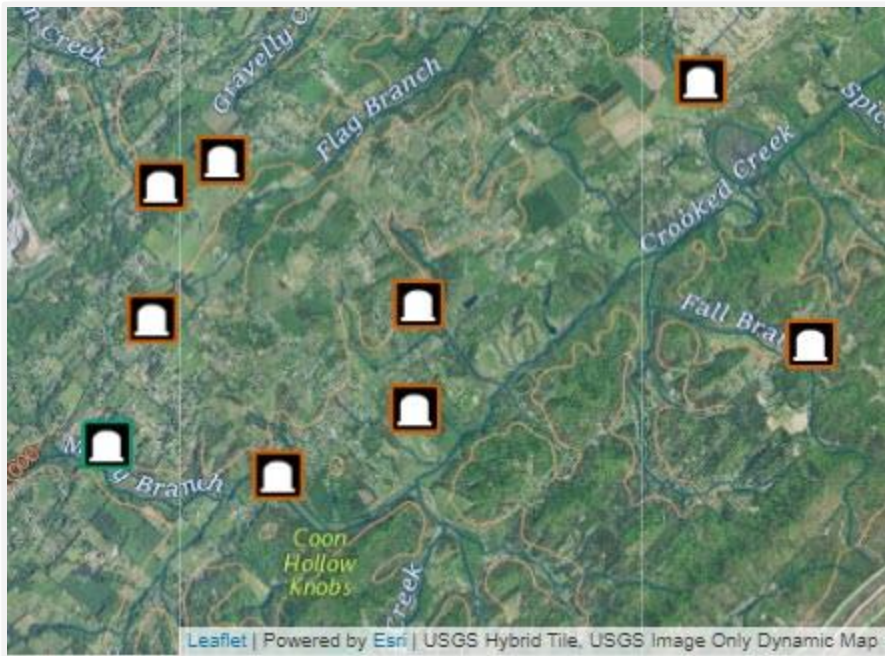


Unedited Data Dilemma

As part of our [tiered editing process](#) we instruct new volunteers to focus on unedited data, or points with a **red border**. However, you've probably noticed that unedited data is becoming increasingly elusive, especially in the western half of the United States. It's great that so much data has been updated, which is the whole point of The National Map Corps project! But we also understand that the waning availability of red data points poses a significant challenge for new volunteers.



Just because unedited data is getting harder to find doesn't mean your work is done! Structures are dynamic; businesses frequently move, or close, or open up new locations. Therefore, we require vigilant volunteers committed to ensuring that the data going into The National Map stays current, which is an ongoing process. We also hope you'll stick around as The National Map Corps transforms and grows. We're still planning on adding additional structure types for collection (although the new-feature approval process is lengthy) and hope to release a new mobile-friendly editing application sometime in FY22. TNMCorps volunteers of all levels are awesome, and we're thankful for and rely on each one of you!

INSIDE THIS ISSUE

- 1 [Unedited Data Dilemma](#)
- 3 [Pandemic Point Progress](#)
- 4 [Yellow Points with no Edit History???](#)
- 7 [Mapping Challenges Updates](#)
- 8 [Cemetery Guidance Update](#)
- 10 [TNMCorps Puzzle: Word Search](#)
- 12 [Recognition](#)

Many of our volunteers sign up wanting to update [The National Map](#) data in their own communities or home states. This is terrific since local knowledge is certainly beneficial in many circumstances, such as verifying hard-to-research features like rural cemeteries or structures in areas where roadside imagery is unavailable or out of date. You may also know about changes in your community, such as a new fire station opening up before their website is even updated.

Unedited Data Dilemma (Continued)

However, since unedited data is getting harder to find, folks hoping to edit data only in familiar spaces and places might be getting discouraged. If you can't find red points in your community but would still like to stick to areas you're familiar with, you do have the option of looking for points which need to be [created](#) or [deleted](#). Determining which points need to be created or deleted is just as important as updating existing data, although it can be a much more tedious and time-consuming research process.

But since we don't require anyone to stick to a specific area, and we really do need that unedited data verified, we highly encourage you to "travel" around and explore new places! The research and editing process will be the same whether you're verifying a school just down the street, or a hospital on the other side of the country in a city you've never visited. So if you're having trouble tracking down unedited data, be sure to check out our [Structure Finder site](#) and refer to the status maps on the [front page](#) of the [User Guide](#).

Consider these other ideas for expanding your editing opportunities:

Check out our [mapping challenges](#).

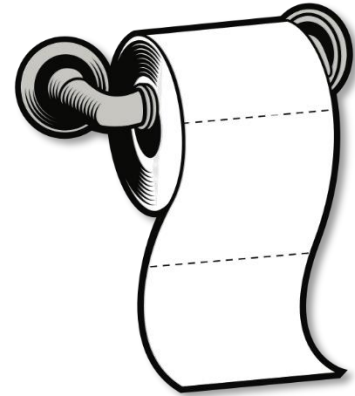
Keep an eye out for upcoming [points-with-no-edit-history mapping challenges](#).

If you're a Standard Editor, reach out to us about becoming a Peer Reviewer as soon as you've edited 25 **red points**. As a Peer Reviewer you can start working through **green points**, and since there are still lots of green points to be checked, you'll have a greater variety of structures and locations to choose from.

If you're already a Peer Reviewer or Advanced Editor, consider leaving the red points to the Standard Editors and shift your efforts to the plethora of green points!

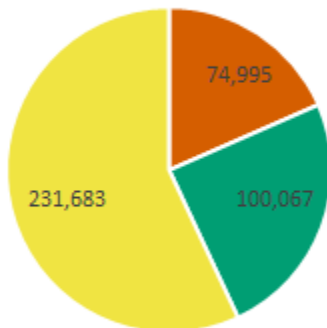
Pandemic Point Progress

As with other significant events in history, everyone probably remembers where they were and what they were doing as the pandemic unfolded in March of 2020. I (Sam) had just finished grad school and was planning to take some much-needed time off to spend with my family. But as everything started to shut down, I cancelled all my trips and began wondering what to fill all my newfound free time with. (Little did I know that my time would be spent hunting down toilet paper for purchase!)



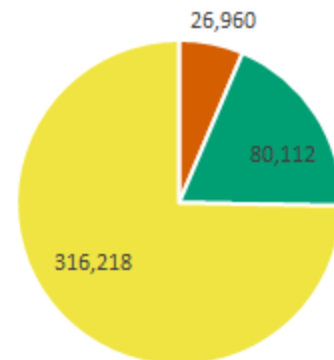
Many of our volunteers found themselves with a similar abundance of time and decided to spend it editing for The National Map Corps. That’s when the awesome power of our volunteers started to shine especially brightly. Looking back at point counts from March 2020 through the present, you can see the huge impact volunteers had.

TNMCORPS Points as of 3/2/2020



■ Unedited ■ Edited ■ Finished

TNMCORPS Points as of 6/1/2021



■ Unedited ■ Edited ■ Finished

Unfortunately, we don't possess the authority (or magic powers) to officially end the pandemic, but we do have the ability to praise our awesome volunteers for all their contributions during this tumultuous period. Thank you!

THANK YOU!

Yellow Points with no Edit History???

Because of our [tiered editing process](#) a point typically goes through multiple iterations before it finally reaches an approved status (i.e., yellow border). A point's accuracy and completeness incrementally improve as it passes through each tier. You can view these iterations by searching for the point in the *Edit History* tab or by selecting the point and then clicking on the *View History* button in the Edit panel.

A purple point with information in its Edit History

City: Denver
State: CO
Zip-code:
Buttons: Cancel, Save, Delete, View History

Edit History:

Username	Date	Type	Errors
	08/20/2020	Update	
	05/22/2020	Update	
	07/04/2019	Update	
	12/08/2016	Update	There are conflicting features of the same type nearby.

OK

However, there are many yellow, purple, and green points in the editor with no information in their Edit History. This means these points were edited prior to August of 2016 (which is when we transferred the data to our current application) and have not been updated since. You can identify these by the message that appears after clicking the *View History* button in the Edit panel.

USGS science for a changing world

TNM Corps

College / University, Elementary School, Technical/Trade School, General School, High School, Middle School

Active Role: USGS Administrator

Name: Parzival Shield Waldorf Preschool and Kindergarten

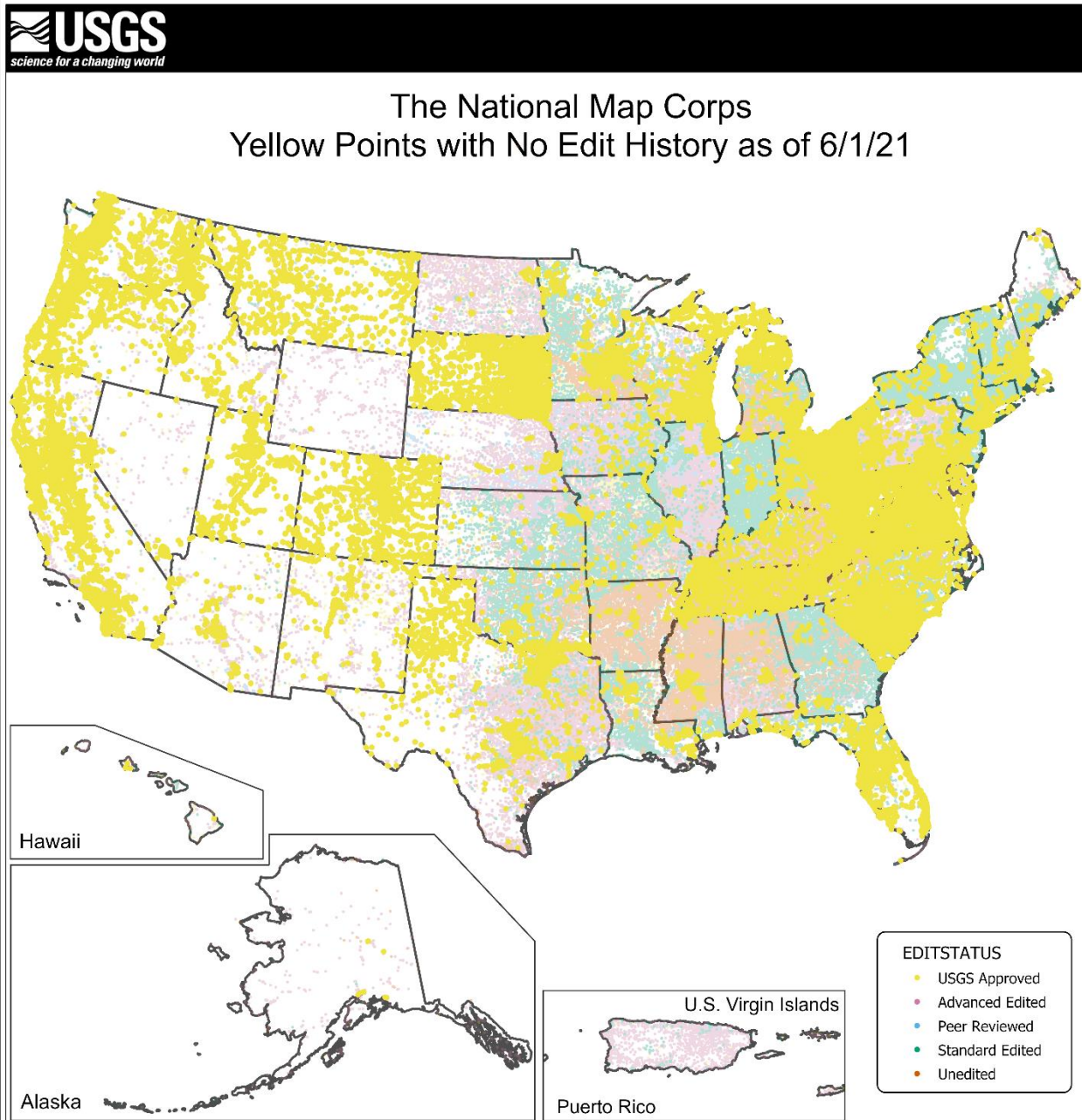
GNIS ID:
Address 1: 2180 South Madison Street
Address 2:
City:
Buttons: Cancel, Save, Delete, View History

A yellow point with no Edit History

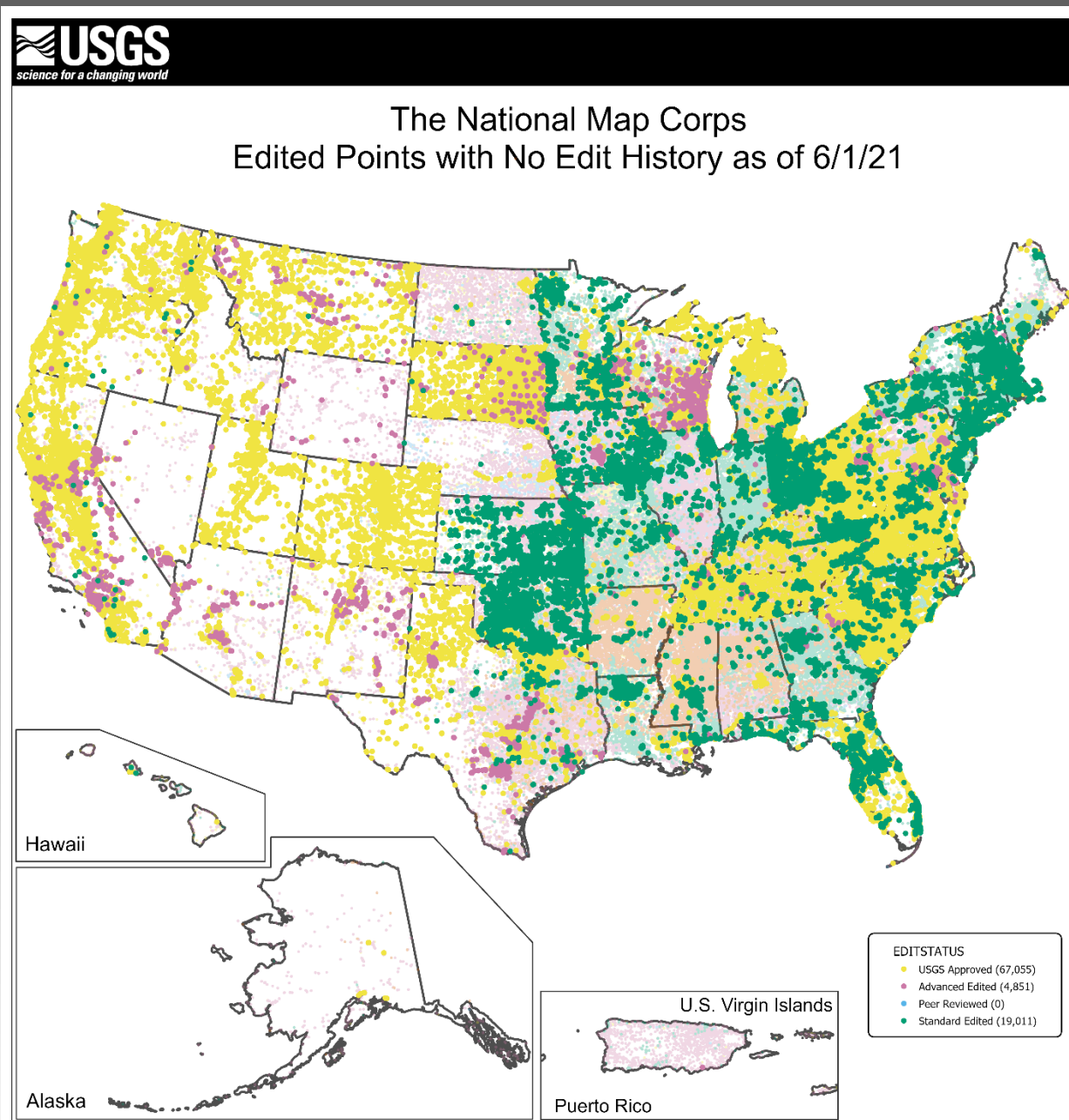
This feature has not been edited

Yellow Points with no Edit History??? (Continued)

A lot can change for an entity over the course of 5 years: Names evolve, businesses relocate, and some may even have permanently closed their doors. Needless to say, these points with no edit history are probably due for another review. We conducted an analysis to see how many of these points are floating around and there's quite a few of them. If you come across points like these, go ahead and research and update them if needed, regardless of your user role. We know this goes against our previous guidance, but in this situation the data is more likely to be out-of-date.



Yellow Points with no Edit History??? (Continued)



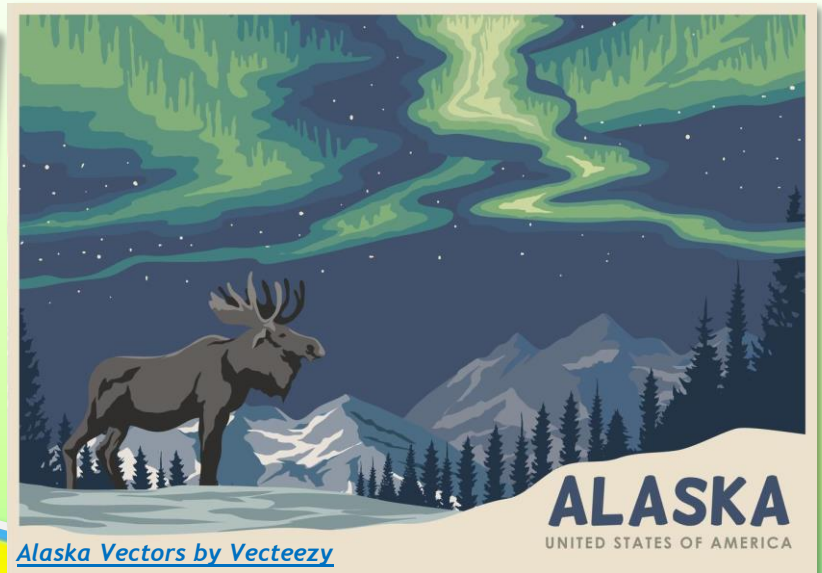
To help make sure these points are still up to date, we plan to release some special mapping challenges in the near future that will target these features. In the meantime, check out our [Mapping Challenges page](#) to see what challenges we currently have open and check back frequently!

Mapping Challenges Updates

Mapping Challenges remain steady as we continue dabbling in the central U.S. while venturing to new regions such as Alaska! The table below shows challenges completed since our last newsletter was released as well as new challenges launched.

WHAT	WHERE	WHEN	LENGTH (DAYS)	# OF UNIQUE POINTS	# OF VOLUNTEERS
City / Town Halls	AK	6/23/21 - present	(See our original post from 6/23/21 for tips and tricks on this challenge)		
Fire Stations	MS	6/23/21 - present	(See our original post from 6/23/21 for tips and tricks on this challenge)		
City / Town Halls	IN	5/27/21 - 7/1/21	35	289	5
Law Enforcement	AR	5/27/21 - 6/23/21	27	241	10
City / Town Halls	WI	4/29/21 - 5/27/21	28	664	5
(May 2021 Newsletter)					
Fire Stations	TN	4/1/21 - 5/27/21	56	774	10

All challenge updates are listed on our [website](#) under Resources > Mapping Challenges.



Cemetery Guidance Update

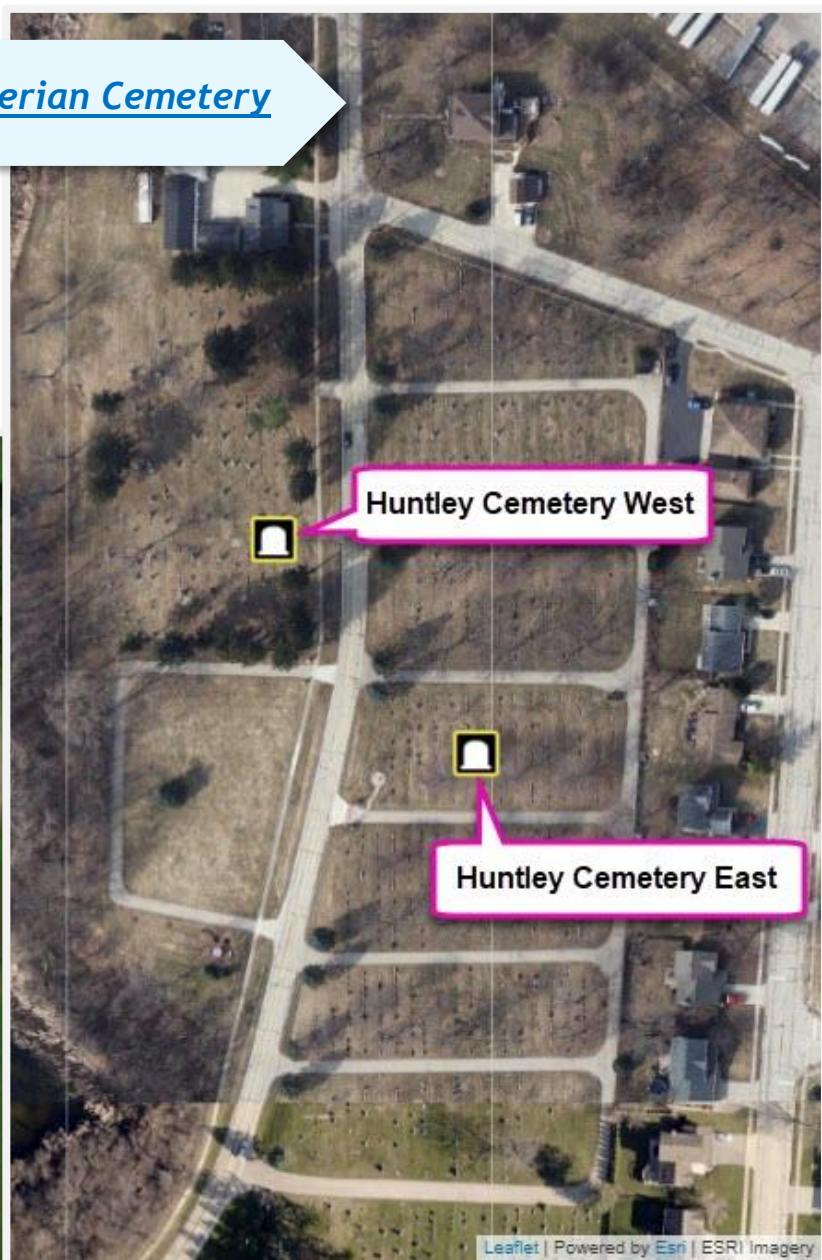
Several years ago, a volunteer reached out via our [Q&A forum](#) to ask about what to do with a cemetery split in two by a highway. If a cemetery is clearly segmented, where should the point be placed? Or would it be better to add a second point?

In our original guidance, we instructed folks to add an additional point to represent a cemetery if the cemetery property was divided by a road. This guidance applies only to cemetery properties divided by public roads/highways/major streets, etc., that completely split the cemetery property in two.

Similarly, if a cemetery is divided into segments separated some distance by land, then two points can be added to represent each segment of the cemetery, with a cardinal direction entered into each name to distinguish them from each other.

Huntley Cemetery and Leesburg Presbyterian Cemetery

Both of these cemeteries are divided by public thoroughfares, so each are represented by two points, distinguished by a cardinal direction in their names.



Cemetery Guidance Update (Continued)

However, this guidance does not apply to cemeteries segmented by their own road networks, or by a single road running through the cemetery that does not otherwise serve as a public thoroughfare. If a cemetery is only segmented by cemetery roads, then an additional cemetery point is not necessary.

Palm Downtown Cemetery and Mountain View Cemetery

Palm Downtown Cemetery

Palm Downtown Cemetery is divided by a road, but since this is only a cemetery road and not a public thoroughfare, this cemetery should only be represented by a single point.

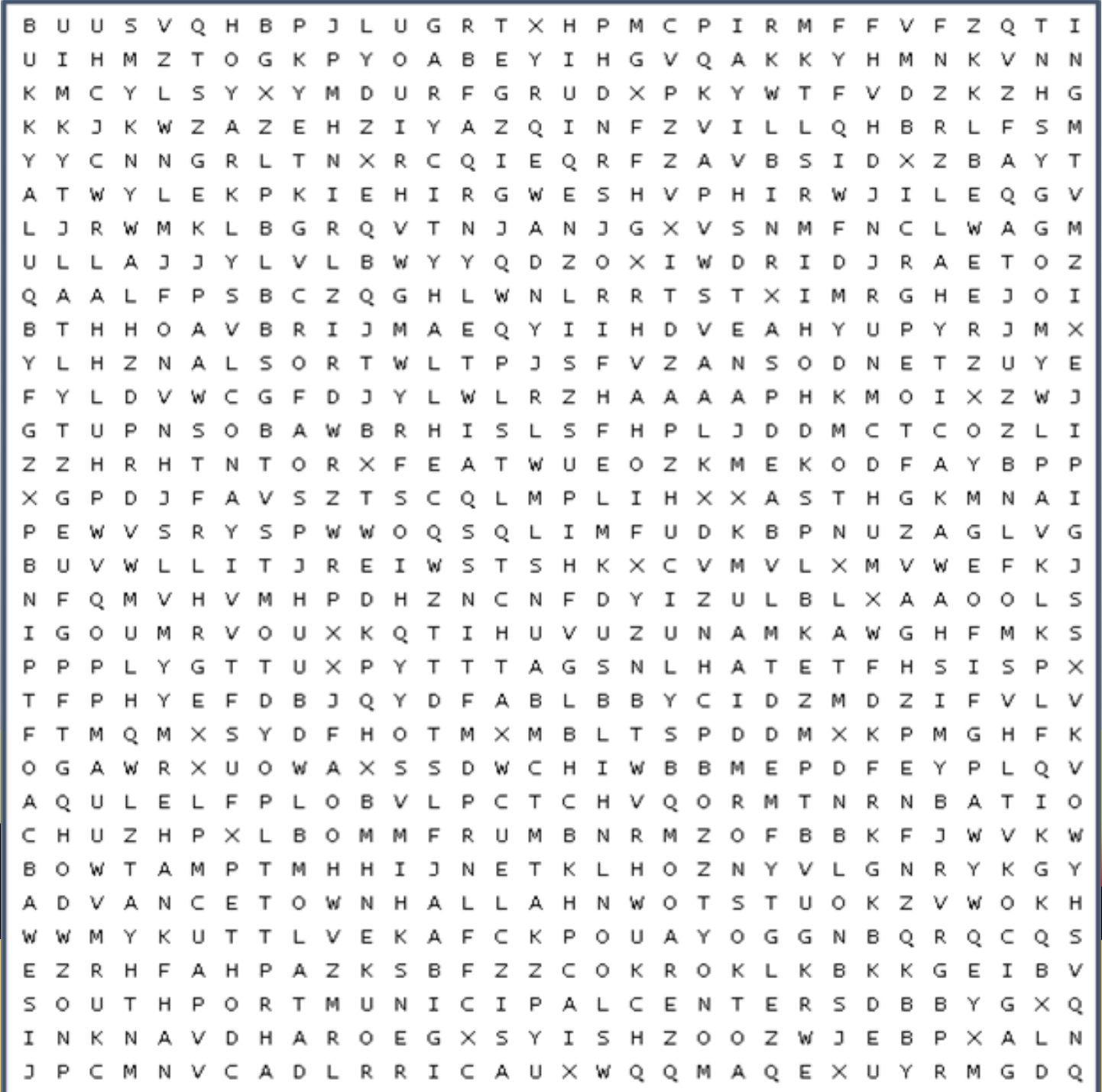
Sometimes cemeteries are oddly shaped, or may appear to be segmented, but two points are not warranted. These situations will have to be examined on a case-by-case basis, so if you're unsure about whether or not to add an additional point for a segmented cemetery separated by land or a public thoroughfare, reach out to us at nationalmapcorps@usgs.gov.

Mountain View Cemetery has a strange shape with a section that almost looks like it could be a separate cemetery. Make sure to do thorough research to verify that there aren't actually two cemeteries located on oddly shaped lots.

Mountain View Cemetery

TNMCorps Puzzle: Word Search

We recently completed a [mapping challenge](#) focusing on city and town hall structures in Indiana. Search for the cities listed below and celebrate completing another challenge!



Advance Town Hall

Indianapolis City Hall

Mishawaka City Hall

Bicknell City Hall

Kouts Town Hall

Salem City Hall

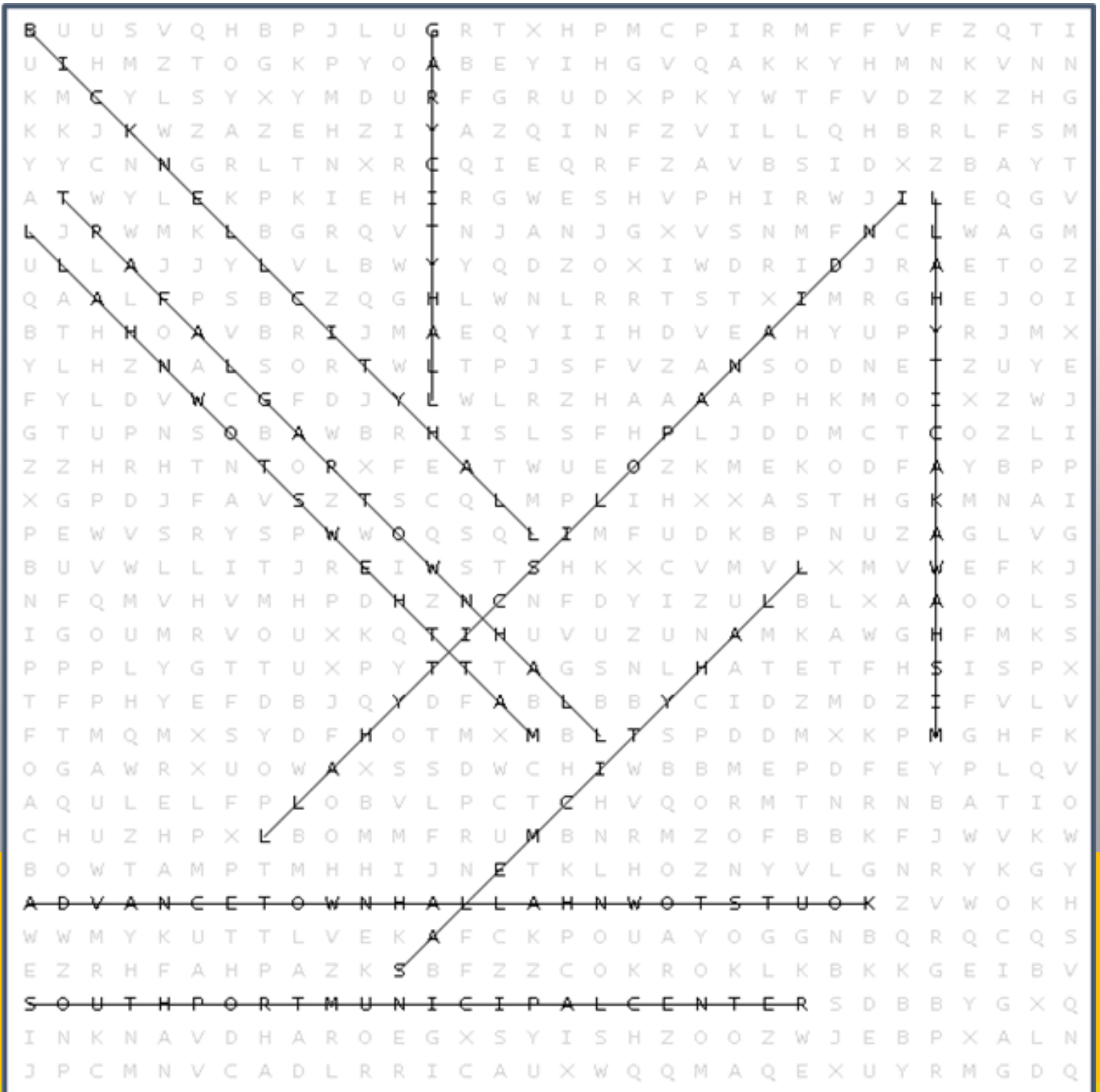
Trafalgar Town Hall

Gary City Hall

Matthews Town Hall

Southport Municipal Center

Word Search Key



Have a story or photo you'd like to share?

We want them! This could be anything from a photo of you verifying a structure or an interesting story that you discovered while editing.

Photos, graphics, and stories may be used in future news releases and social media posts. All materials submitted become part of the “[public domain](#),” and can be used by USGS in the future unless otherwise specified.

Please email them to nationalmapcorps@usgs.gov

New Recognition Category Members



Squadron of Biplane Spectators
(6000-6999)



Ring of Reconnaissance Rocketeers
(5000-5999)

- Mr Ballwin



Family of Floating Photogrammetrists
(3000-3999)



Flock of Winged Witnesses
(4000-4999)

- Rlsailor



Theodolite Assemblage
(2000-2999)



Alidade Alliance
(1000-1999)

- LabradorSky



Stadia Board Society
(500-999)



Circle of the Surveyor's Compass
(200-499)

- DevOpp
- ShaneM@USGS

- LuisLujano2021
- alexbw97



Pedometer Posse (100-199)

- Creeky69r
- VM
- Audrey_C
- alexbw97



Society of the Steel Tape (50-99)

- Creeky69r
- Elise Woolsey
- WillZabin
- alexbw97
- ArielMHByrnes
- Audrey_C



Order of the Surveyor's Chain (25-49)

- Creeky69r
- Elise Woolsey
- 13isha7
- Peter Webber
- RoadScholar@11
- alexbw97
- ArielMHByrnes
- Audrey_C
- Geevarv
- SouthNJ88
- SouthpawSandals
- mollylovesmaps
- Katonah
- yayan Zhang
- Eduardo Escalona

CONTACT US AT: nationalmapcorps@usgs.gov for suggestions, questions, additions to the next newsletter, or if you would like to be removed from the email list.

