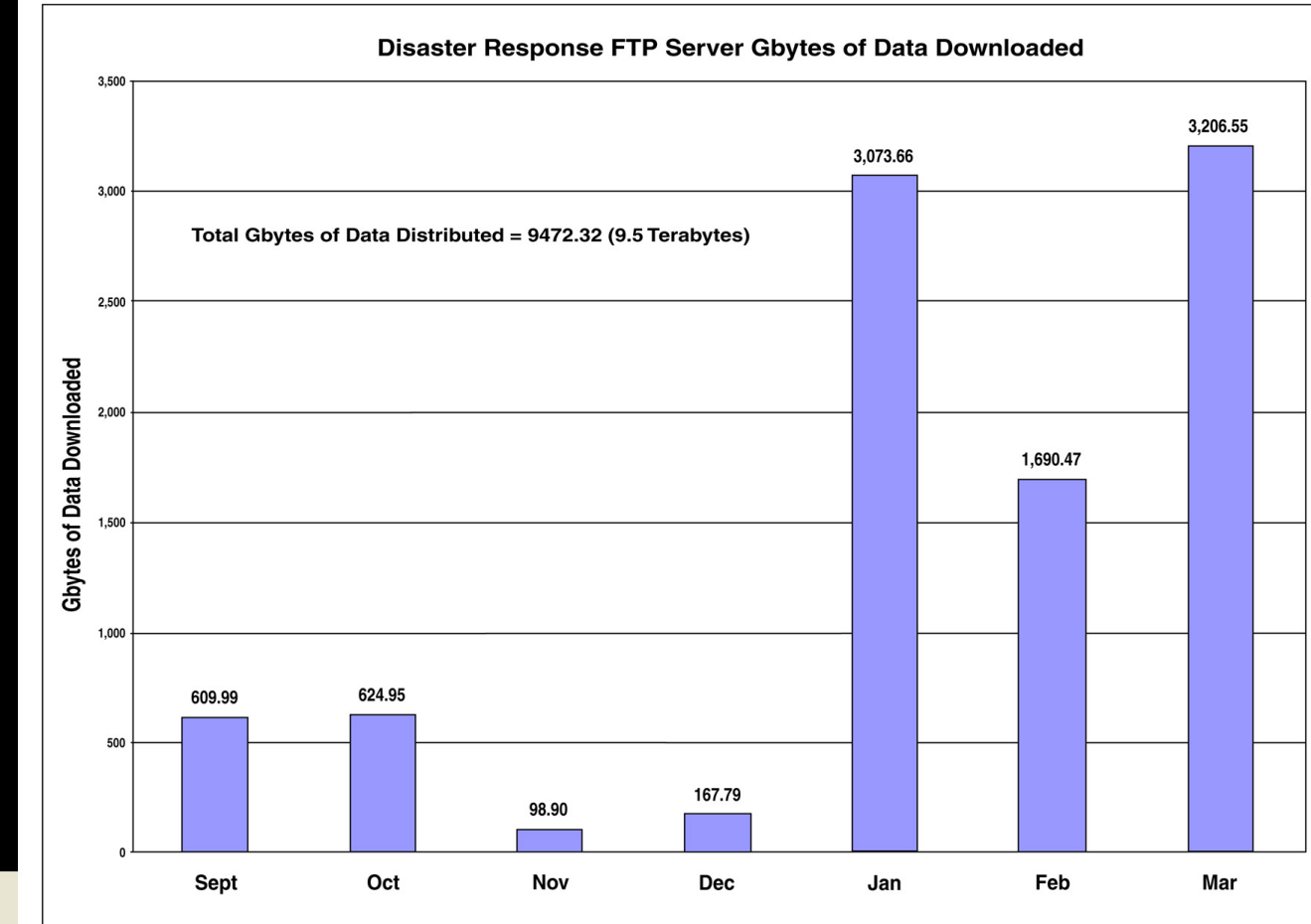
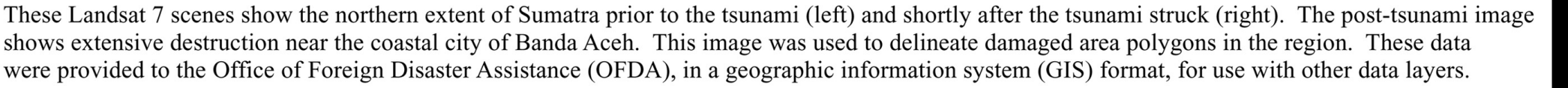
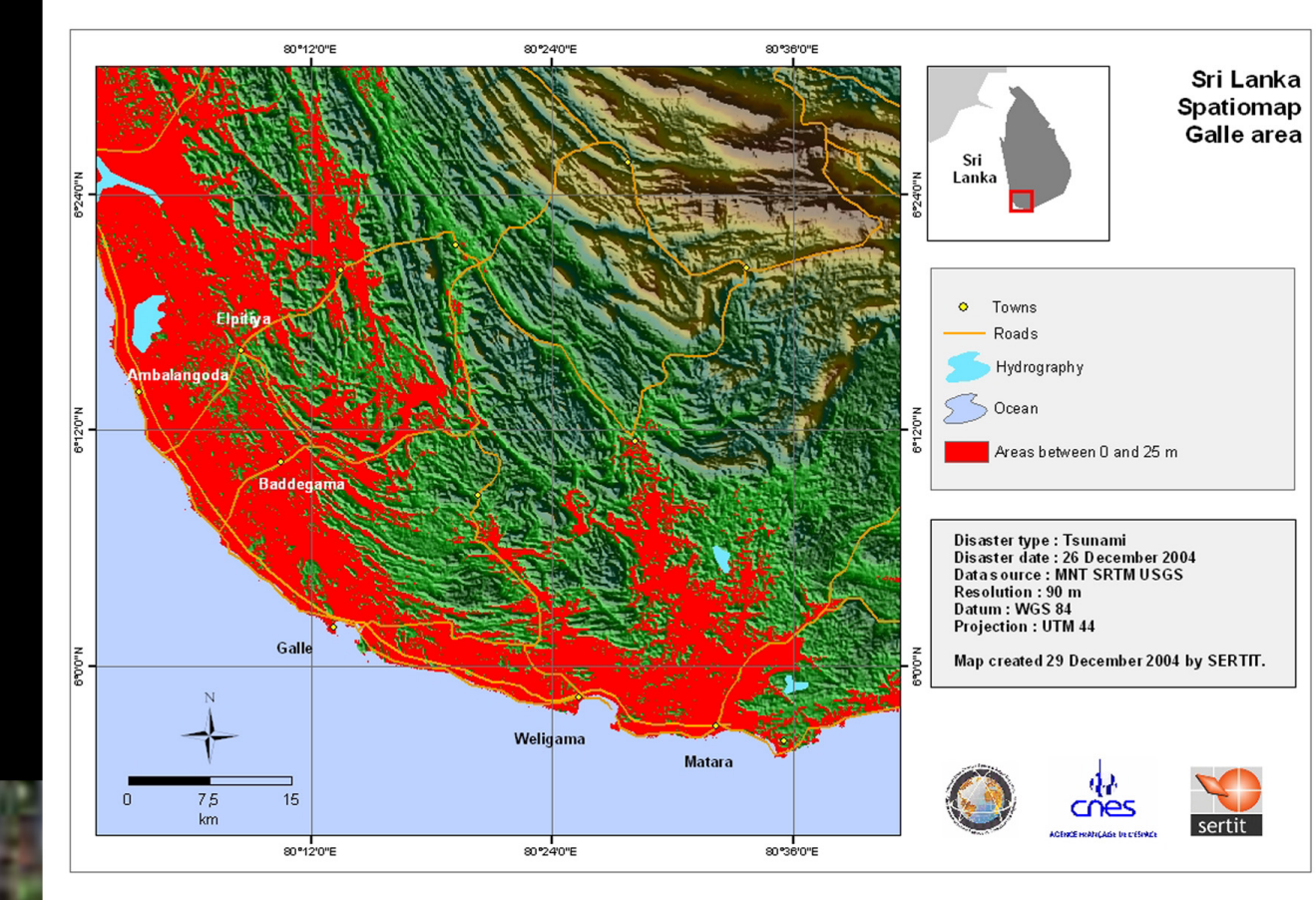


2004 - Indian Ocean Tsunami

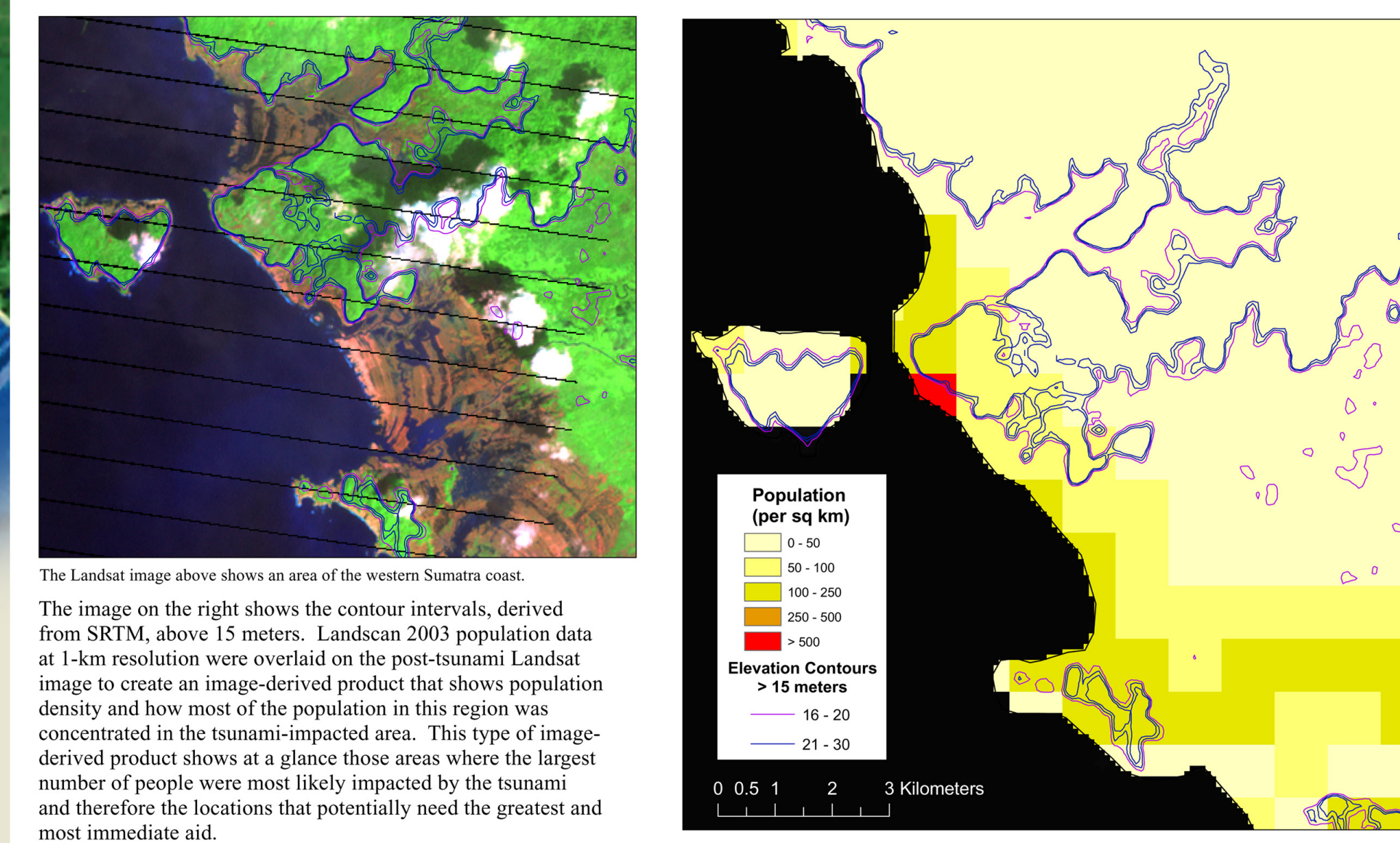


A map of the Indian Ocean region, showing the southern tip of India and the island of Sri Lanka. The labels 'India' and 'Sri Lanka' are visible in yellow text on the map.



Sensor	Gbytes (Approximate)
S001	3.25
S002	3.2
S003	2.05
S004	0.55
S005	0.25
S006	0.2
S007	0.15
S008	0.12
S009	0.1
S010	0.08
S011	0.05
S012	0.03
S013	0.02
S014	0.01
S015	0.01

Total Gbytes of Data Distributed = 8134.40 (8.1 Terabytes)



The image on the right shows the contour intervals, derived from SRTM, above 15 meters. Landscan 2003 population data at 1-km resolution were overlaid on the post-tsunami Landsat image to create an image-derived product that shows population density and how most of the population in this region was concentrated in the tsunami-impacted area. This type of image-derived product shows at a glance those areas where the largest number of people were most likely impacted by the tsunami and therefore the locations that potentially need the greatest and most immediate aid.

http://gisdata.usgs.gov/Website/Disaster_Response

<http://www.red-eft.net>