

What do I need to access EarthExplorer?

Internet access and a system with the following resources:

Hardware Requirements for Windows:

- 233 MHz processor or faster, 2 GHz recommended
- Minimum of 256MB RAM, 4GB recommended
- Minimum of 20GB of free space, 100GB recommended
- Display capable of 1024x768 with 256 colors, with 32MB of video RAM

Hardware Requirements for Apple Macintosh:

- Intel x86 or PowerPC G3, G4, or G5 - 2 GHz or better
- Minimum of 256MB RAM, 4GB recommended
- Minimum of 20GB of free space, 100GB recommended
- Display capable of 1024x768 with 256 colors, with 32MB of video RAM

Network Requirements:

- Broadband connection 1.5Mbps
- 3G network will affect display speed

Supported Operating Systems:

- Apple Macintosh OS X
- UNIX
- Linux
- Solaris SPARC
- Microsoft Windows XP, Vista, 7, Server 2003, or Server 2008

Browsers supported:

- Internet Explorer (7.x, 8.x, 9.x)
- Firefox (3.x, 4.x)
- Chrome (10.x)
- Opera (10.x)
- Safari (5.x)

Any use of trade, product, or firm names is for descriptive purposes only and does not imply endorsement by the U.S. Government.

Who do I contact for assistance with EarthExplorer?

Please contact Customer Services at:
lta@usgs.gov

USGS
Earth Resources Observation
and Science (EROS) Center
47914 252nd Street
Sioux Falls, SD 57198
Phone: 605-594-6151
FAX: 605-594-6589



EarthExplorer

<http://earthexplorer.usgs.gov>

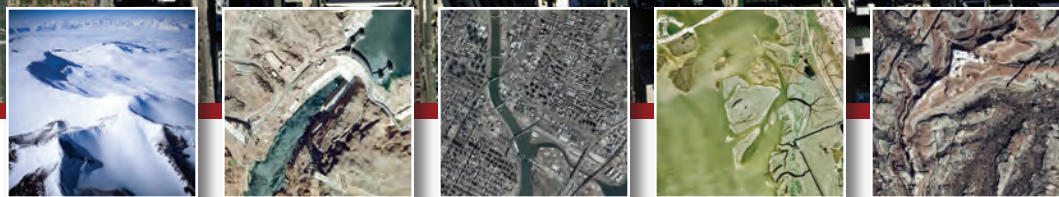


General Information Product 136

U.S. Department of the Interior
U.S. Geological Survey

General Information Product 136
January 2012

earthexplorer



What is EarthExplorer?

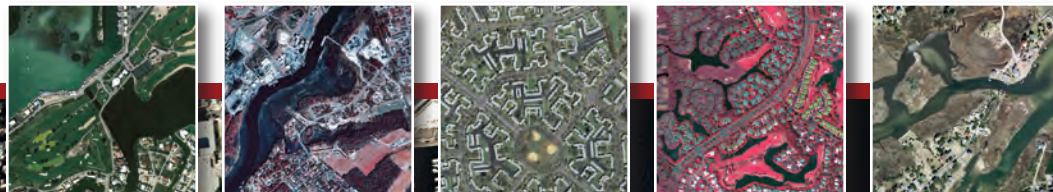
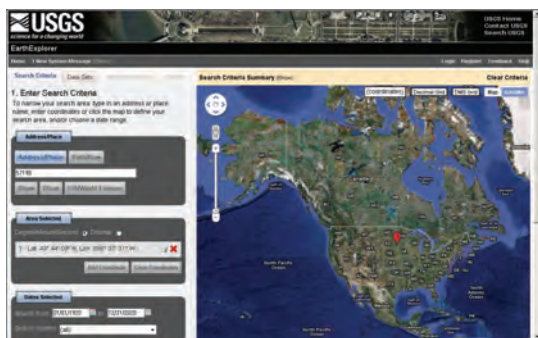
EarthExplorer (EE) is a client/server interface that provides access to the U.S. Geological Survey (USGS) Earth Resources Observation and Science (EROS) Center archive. The EROS archive is a comprehensive collection of land remote-sensing data that spans more than 70 years for national coverage and more than 50 years for the world.

EarthExplorer's self-service access provides a graphical user interface to define areas of interest by zip code, address, place name, or by creating an area of interest on an interactive map. Queries can be applied to multiple collections at the same time.

Current EE data collections include aerial photography, satellite imagery, elevation data, land cover products, and digitized maps as well as remotely-sensed data for a variety of USGS projects and partners. More than 180 data collections are accessible through EE. On-going data acquisitions and the inclusion of new data sets to support the geo-science community and general public allow EE to remain current.

EE allows users to identify an area of interest by address/place name, zip code, or by utilizing the interactive map to specify a geographic point, rectangle or multiple point polygons. Data searches also can be made for specific date ranges. Additional criteria also exist for each data collection to assist the user in accessing the browse, metadata, and downloadable data from the USGS/EROS land remote-sensing archive. EE users can validate their data selections with the "show footprint" icon and submit on-line requests for data not immediately available from the archive. EE provides KML, arc shape file, and spreadsheet export options in managing the extensive volume of information available from the USGS.

<http://earthexplorer.usgs.gov>



High resolution orthoimagery
Baltimore, Maryland