

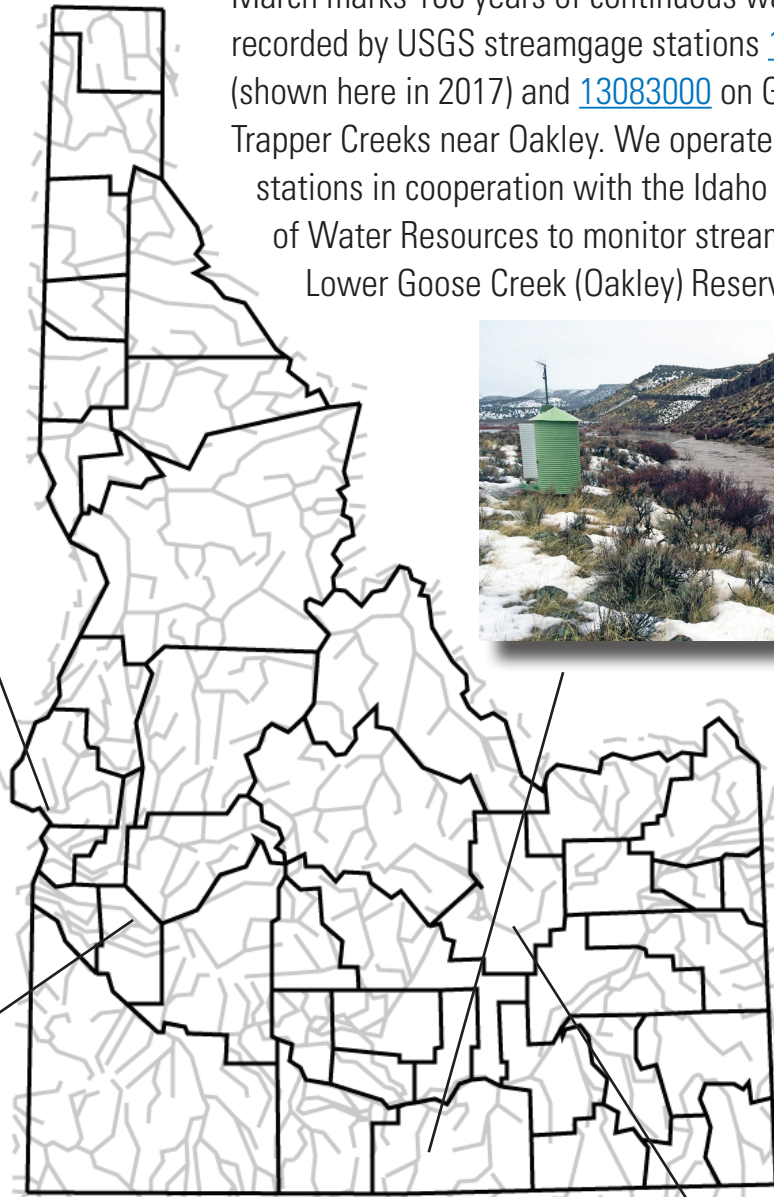
Idaho Hydrologic Update for February 2019



February storms have boosted snowpack in basins throughout the state. On February 26, [Weiser River basin snowpack](#) was at 149 percent of the 30-year median. Streamflow at [USGS 13266000](#), Weiser River near Weiser was at 329 percent of the 77-year median for that day of the year.



Our Deputy Center Director, [Christian Schmidt](#), begins a 120-day detail as a Research Manager for the USGS Forest and Rangeland Ecosystem Science Center. Water Quality Specialist [Christopher Mebane](#) will serve as Deputy Center Director until Christian returns.



March marks 100 years of continuous water data recorded by USGS streamgauge stations [13082500](#) (shown here in 2017) and [13083000](#) on Goose and Trapper Creeks near Oakley. We operate these stations in cooperation with the Idaho Department of Water Resources to monitor streamflow into Lower Goose Creek (Oakley) Reservoir.



Our [Idaho National Laboratory Project Office](#) marks two significant milestones this year. On January 16, 1949, USGS scientists collected the first water-quality sample from well [CFA 2](#) at the INL. In 1959, we established our project office at the site.



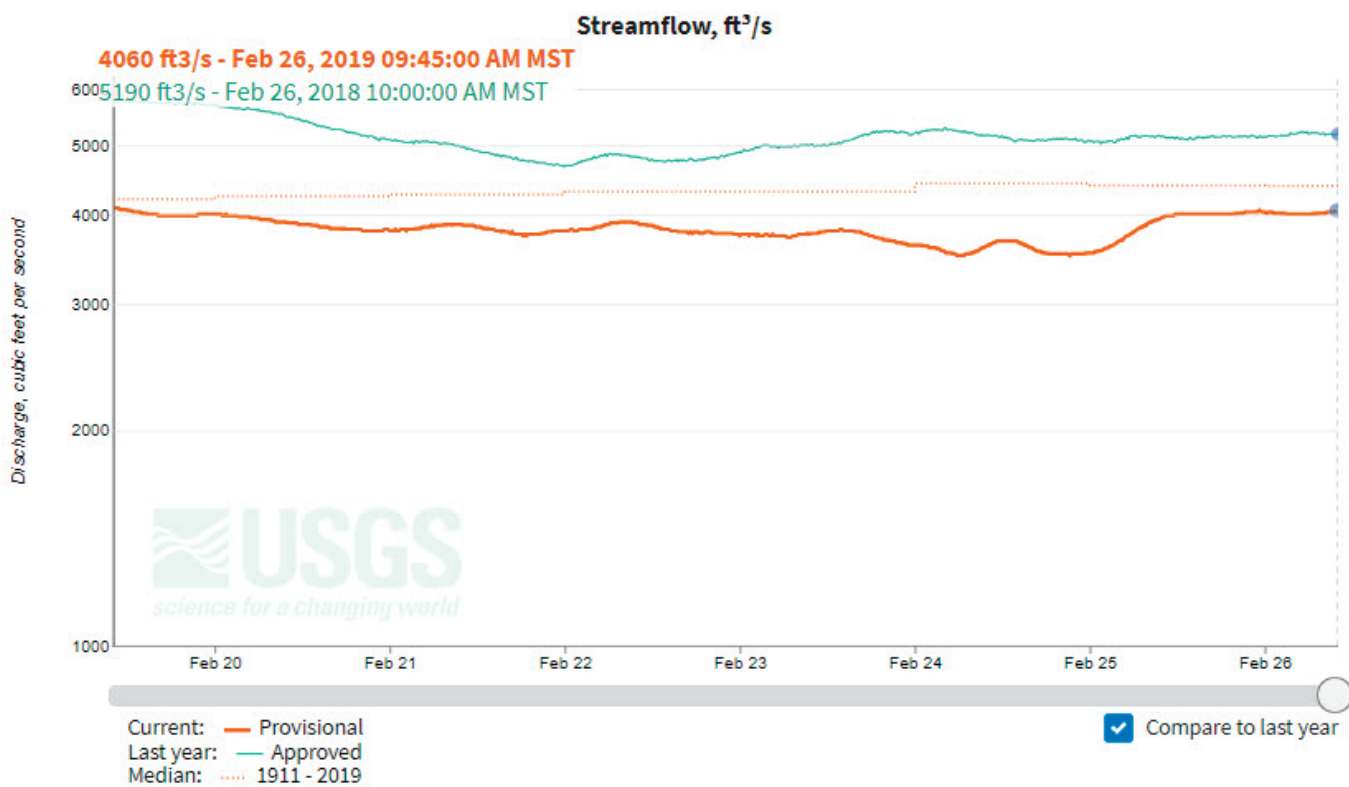
[More >](#)



Idaho Hydrologic Update for February 2019

New National Water Information System Data Pages

The USGS has launched redesigned, beta real-time data pages on waterdata.usgs.gov like this one for [USGS 13317000](http://waterdata.usgs.gov/13317000), Salmon River at White Bird. The pages use the latest web technology and usability techniques, are mobile-friendly, and enhance discoverability, accessibility, and integration across data delivery platforms. We invite your feedback on these new beta web pages. A link to provide your input is available at the top of each new beta web page.



USGS Idaho Water Science Center

208.387.1300

Director: Kyle Blasch

Deputy Director: Christopher Mebane

Assistant Director: Dave Evetts

Public Information Officer: Tim Merrick