

Mineral Industry Surveys

For information, contact:

Christine L. Thomas, Zinc Commodity Specialist
 National Minerals Information Center
 U.S. Geological Survey
 989 National Center
 Reston, VA 20192
 Telephone: (703) 648-7713 Fax: (703) 648-7757
 Email: clthomas@usgs.gov

Hodan A. Fatah (Data)
 Telephone: (703) 648-4971
 Fax: (703) 648-7975
 Email: hfatah@usgs.gov

Internet: <http://minerals.usgs.gov/minerals/>

ZINC IN SEPTEMBER 2018

Domestic mine production (recoverable) of zinc in September 2018 was 71,000 metric tons (t) (tables 1, 2). Average daily mine production in September was 2,370 t, 7% more than that in August and 13% more than that in September 2017 (fig. 1).

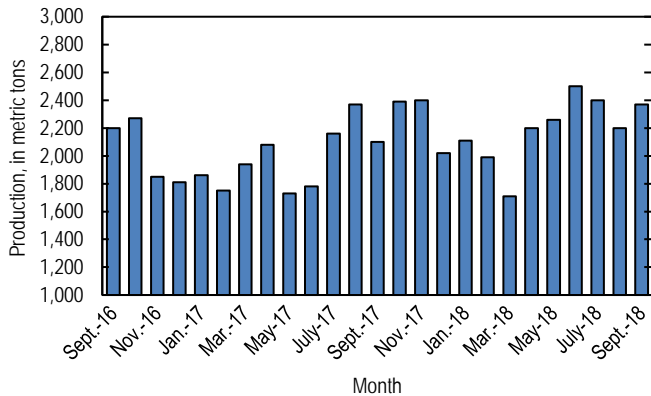


Figure 1. Average daily domestic zinc mine production (recoverable) from September 2016 through September 2018.

Stocks and Prices

Global London Metal Exchange Ltd. (LME) stocks of Special High Grade (SHG) zinc were 201,925 t in September, 16% less than stocks at the end of August and 20% less than stocks at the end of September 2017 (fig. 2, table 7).

The monthly average Platts Metals Week North American SHG zinc price in September 2018 was \$1.19 per pound, 3% less than that in August and 21% less than that in September 2017. The September 2018 average LME cash price for SHG zinc was \$2,432.71 per metric ton, 3% less than that in the previous month and 22% less than that in September 2017 (fig. 3, table 6).

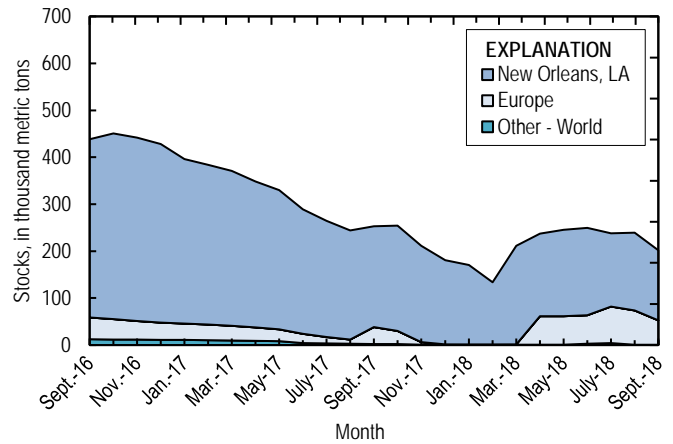


Figure 2. Global LME stocks of Special High Grade zinc, monthend, from September 2016 through September 2018. Source: London Metal Exchange Ltd.

The North American premium to the LME cash price in September 2018 averaged about 8.40 cents per pound, slightly more than that in August and slightly less than that in September 2017 (fig. 3, table 6).

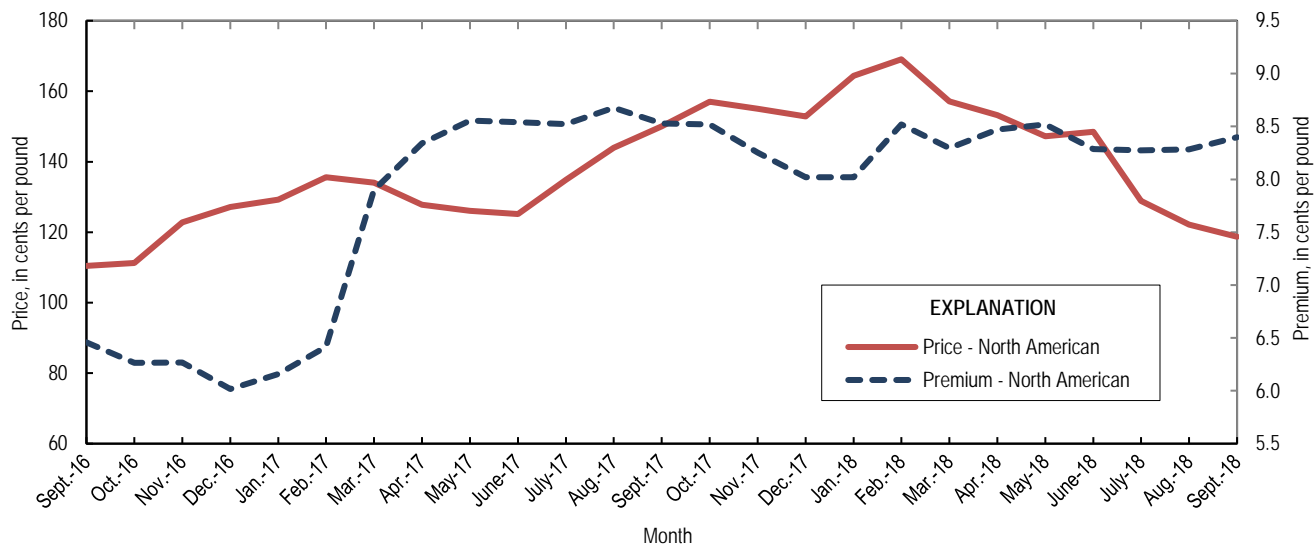


Figure 3. Average monthly North American price and premium for Special High Grade zinc from September 2016 through September 2018. Source: Platts Metals Week.

List services and web feed subscribers are the first to receive notification of USGS minerals information publications and data releases. For information on how to subscribe, go to <http://minerals.usgs.gov/minerals/>.

TABLE 1
SALIENT ZINC STATISTICS¹

(Metric tons, unless otherwise specified)

	2017	2018		
	January– December ^p	August	September	January– September ²
Production:				
Mine, zinc content of concentrate ³	774,000	70,700 ^r	72,200	619,000
Mine, recoverable zinc ³	748,000	68,300 ^r	71,000	600,000
Smelter, refined zinc ^e	132,000	9,250 ^r	9,250	87,200
Consumption of refined zinc, apparent ⁴	829,000	76,100 ^r	71,900	652,000
Imports for consumption:				
Ore and concentrate (zinc content)	6,780	--	--	32
Refined zinc	729,000	69,000	64,400	581,000
Exports:				
Ore and concentrate (zinc content)	682,000	188,000	163,000	653,000
Refined zinc	32,200	2,160	1,770	16,200
Price:⁵				
London Metal Exchange cash, average, dollars per metric ton	2,893.52	2,510.05	2,432.71	3,022.91
Platts Metals Week North American, average, cents per pound	139.28	122.14	118.74	145.46

^cEstimated. ^pPreliminary. ^rRevised. -- Zero.

¹Data are rounded to no more than three significant digits, except prices; may not add to totals shown.

²May include revisions to previously published data.

³Reported zinc content in both zinc and lead concentrates.

⁴Smelter production plus imports for consumption minus domestic exports.

⁵Special High Grade Zinc.

TABLE 2
MINE AND SMELTER PRODUCTION OF ZINC
IN THE UNITED STATES¹

(Metric tons)

Period	Mine ²		Smelter ^e
	Zinc content	Recoverable	
2017:			
September	65,000	62,900	9,920
October	76,400	73,900	11,900
November	74,500	72,100	11,900
December	64,800	62,700	11,900
January–December	774,000	748,000	132,000
2018:			
January	67,600	65,400	10,500
February	57,600	55,700	6,050
March	54,900	53,000	11,300
April	67,700	65,900	10,600
May	72,500	70,100	10,600
June	77,500	74,900	10,600
July	78,000 ^f	75,500 ^f	9,250 ^f
August	70,700 ^f	68,300 ^f	9,250 ^f
September	72,200	71,000	9,250
January–September	619,000	600,000	87,200

^eEstimated. ^fRevised.

¹Data are rounded to no more than three significant digits; may not add to totals shown.

²Includes the zinc content in both lead and zinc concentrates.

TABLE 3
U.S. IMPORTS FOR CONSUMPTION OF ZINC¹

(Gross weight, unless otherwise specified)

Material	2018					
	2017		September		January–September ²	
	Quantity (metric tons)	Value (thousands)	Quantity (metric tons)	Value (thousands)	Quantity (metric tons)	Value (thousands)
Ore and concentrate (zinc content)	6,780	\$14,900	--	--	32	\$23
Unwrought:						
Refined zinc	729,000	2,060,000	64,400	\$170,000	581,000	1,830,000
Zinc alloys	7,970	23,400	436	1,300	3,740	12,300
Wrought:						
Bars, rods, profiles, wire	2,980	11,400	267	900	2,650	11,100
Plates, sheets, strip, foil	3,690	14,800	350	1,100	4,330	13,000
Ash and residues:						
Hard zinc spelter	190	344	--	--	--	--
Zinc dross and skimmings	6,350	11,900	404	618	3,510	6,850
Other (zinc content)	1,500	843	--	--	625	418
Other:						
Powders, flakes, dust	27,100	97,600	2,610	10,100	20,700	84,000
Waste and scrap	11,100	20,200	1,240	1,750	9,030	16,800
Chemicals:						
Lithopone	1,940	1,860	27	36	204	601
Zinc oxide	114,000	294,000	9,950	26,200	89,500	266,000
Zinc chloride	204	1,770	17	156	160	1,410
Zinc sulfate	91,100	85,400	15,100	16,800	72,900	78,500
Zinc sulfide	2,140	6,490	135	635	2,080	8,080

-- Zero.

¹Data are rounded to no more than three significant digits.

²May include revisions to previously published data.

Source: U.S. Census Bureau.

TABLE 4
U.S. IMPORTS OF ZINC, BY TYPE OF MATERIAL AND COUNTRY OR LOCALITY¹

(Metric tons, gross weight, unless otherwise specified)

Material and country or locality	General imports			Imports for consumption		
	2017	2018		2017	2018	
		September	January–September ²		September	January–September ²
Ore and concentrate (zinc content):						
Canada	23	--	(3)	23	--	(3)
China	--	--	32	--	--	32
Peru	6,760	--	--	6,760	--	--
Total	6,780	--	32	6,780	--	32
Refined zinc:						
Australia	47,700	--	--	103,000	--	676
Belgium	--	--	--	18,300	--	1,790
Canada	393,000	45,200	396,000	393,000	45,200	396,000
China	12	--	17	990	1,360	3,890
India	12,500	--	2,840	12,500	--	2,840
Japan	--	--	--	225	--	--
Korea, Republic of	2,010	--	--	3,550	--	5,430
Mexico	86,900	9,000	75,800	86,900	9,000	75,800
Namibia	--	--	--	450	--	122
Netherlands	--	--	--	3,070	596	5,260
Peru	54,400	3,390	35,000	54,400	3,390	35,000
Poland	292	--	349	292	--	349
Spain	21,000	--	20,000	53,000	4,880	53,500
Taiwan	15	15	19	15	15	19
Other [5 countries and (or) localities]	365	--	5,490	365	--	2
Total	618,000	57,600	536,000	729,000	64,400	581,000
Oxide:						
Australia	91	3	93	91	3	93
Belgium	9	--	--	9	--	--
Brazil	(3)	108	108	(3)	108	108
Canada	63,200	4,240	41,700	63,200	4,240	41,700
China	217	74	267	217	74	267
France	24	--	16	24	--	16
Germany	2,650	101	884	2,650	101	884
Hong Kong	9	--	58	9	--	58
India	60	--	81	60	--	81
Italy	12	--	17	12	--	17
Japan	484	58	578	484	58	578
Korea, Republic of	16	8	29	16	8	29
Mexico	37,100	4,320	38,000	37,100	4,320	38,000
Netherlands	8,770	721	5,680	8,770	721	5,680
Peru	812	303	1,820	812	303	1,820
Spain	7	--	--	7	--	--
Taiwan	--	--	10	--	--	10
Thailand	2	--	2	2	--	2
United Kingdom	355	--	99	355	--	99
Other [7 countries and (or) localities]	--	9	121	--	9	121
Total	114,000	9,950	89,500	114,000	9,950	89,500

-- Zero.

¹Data are rounded to no more than three significant digits; may not add to totals shown.

²May include revisions to previously published data.

³Less than ½ unit.

Source: U.S. Census Bureau.

TABLE 5
U.S. EXPORTS OF ZINC¹

(Gross weight, unless otherwise specified)

Material	2018					
	2017		September		January–September ²	
	Quantity (metric tons)	Value (thousands)	Quantity (metric tons)	Value (thousands)	Quantity (metric tons)	Value (thousands)
Ore and concentrate (zinc content)	682,000	\$1,430,000	163,000	\$290,000	653,000	\$1,240,000
Unwrought:						
Refined zinc	32,200	76,000	1,770	4,330	16,200	39,600
Zinc alloys	14,500	42,600	1,550	4,610	16,700	51,900
Wrought:						
Bars, rods, profiles, wire	9,110	22,100	859	2,410	7,700	22,600
Plates, sheets, strip, foil	7,670	29,400	491	2,120	5,640	23,600
Ash and residues:						
Hard zinc spelter	8,360	16,500	626	1,040	5,830	11,700
Other (zinc content)	19,200	31,700	2,110	3,540	17,400	32,200
Other:						
Powders, flakes, dust	12,800	40,700	1,240	5,880	10,300	44,500
Waste and scrap	33,600	41,100	2,290	2,730	33,100	38,600
Chemicals:						
Lithopone	762	4,630	7	58	151	989
Zinc oxide	66,100	90,100	4,060	5,670	43,300	69,600
Zinc chloride	288	498	11	36	177	316
Zinc sulfate	776	871	66	56	735	640
Zinc sulfide	636	16,200	52	1,680	870	12,400

¹Data are rounded to no more than three significant digits.

²May include revisions to previously published data.

Source: U.S. Census Bureau.

TABLE 6
AVERAGE PRICES FOR SPECIAL HIGH GRADE ZINC

Period	North	London Metal Exchange	
	American ¹	cash ²	
	¢/lb.	¢/lb.	\$/t
2017:			
September	150.01	141.48	3,119.18
October	157.00	148.48	3,273.52
November	155.02	146.77	3,235.61
December	152.81	144.79	3,192.04
January–December	139.28	131.25	2,893.52
2018:			
January	164.36	156.34	3,446.75
February	169.06	160.54	3,539.35
March	157.07	148.78	3,280.02
April	153.19	144.72	3,190.48
May	147.20	138.68	3,057.41
June	148.50	140.22	3,091.21
July	128.85	120.57	2,658.18
August	122.14	113.85	2,510.05
September	118.74	110.35	2,432.71
January–September	145.46	137.12	3,022.91

¹Platts Metals Week North American price. Based on the London Metal Exchange cash price plus premium.

²Average of the cash buyer price and the cash seller and settlement price.

Source: Platts Metals Week.

TABLE 7
LONDON METAL EXCHANGE (LME) STOCKS OF SPECIAL HIGH GRADE ZINC, END OF PERIOD

(Metric tons)

Period	United States		Europe	Other	Total LME
	New Orleans, LA	Total			
2017:					
September	215,100	215,100	35,825	2,325	253,250
October	223,775	223,775	27,925	2,325	254,025
November	204,950	204,950	5,425	1,150	211,525
December	179,225	179,225	925	825	180,975
2018:					
January	169,325	169,325	600	775	170,700
February	132,100	132,100	600	775	133,475
March	210,175	210,175	600	875	211,650
April	175,600	175,600	60,650	1,025	237,275
May	184,125	184,125	60,650	875	245,650
June	185,425	185,425	60,650	3,175	249,250
July	155,900	155,900	78,150	4,075	238,125
August	165,375	165,375	73,125	675	239,175
September	149,350	149,350	51,900	675	201,925

Source: London Metal Exchange, Ltd.