

Mineral Industry Surveys

For information, contact:

Amy C. Tolcin, Zinc Commodity Specialist (Acting)
 National Minerals Information Center
 U.S. Geological Survey
 989 National Center
 Reston, VA 20192
 Telephone: (703) 648-4940 Fax: (703) 648-7757
 Email: atolcin@usgs.gov

Hodan A. Fatah (Data)
 Telephone: (703) 648-4971
 Fax: (703) 648-7975
 Email: hfatah@usgs.gov

Internet: <https://www.usgs.gov/centers/nmic>

ZINC IN MAY 2019

Domestic mine production (recoverable) of zinc in May 2019 was 67,700 metric tons (t) (tables 1, 2). Average daily mine production in May was 2,180 t, 11% lower than that in the previous month and 3% lower than that in May 2018 (fig. 1).

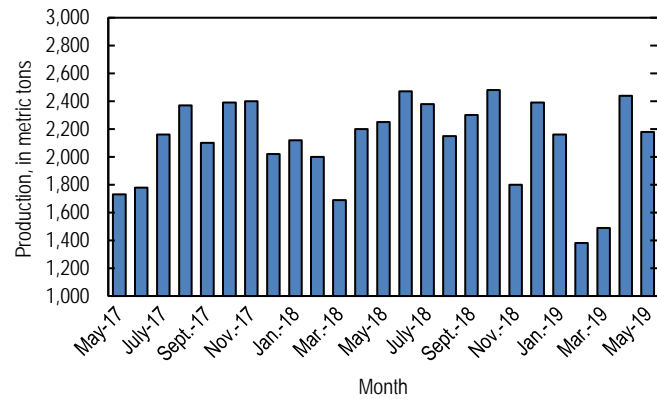


Figure 1. Average daily domestic zinc mine production (recoverable) from May 2017 through May 2019.

Stocks and Prices

Global London Metal Exchange Ltd. (LME) stocks of Special High Grade (SHG) zinc were 100,375 t at the end of May 2019, 18% more than stocks at the end of April but 59% less than stocks at the end of May 2018 (fig. 2, table 7).

The monthly average Platts Metals Week North American SHG zinc price in May 2019 was \$1.33 per pound, 6% lower

than that in the previous month and 9% lower than that in May 2018. The May 2019 average LME cash price for SHG zinc was \$2,746.79 per metric ton, 7% lower than that in April and 10% lower than that in May 2018 (fig. 3, table 6).

The North American premium to the LME cash price in April 2019 averaged 8.78 cents per pound, slightly more than that in the previous month and 3% more than that in May 2018 (fig. 3, table 6).

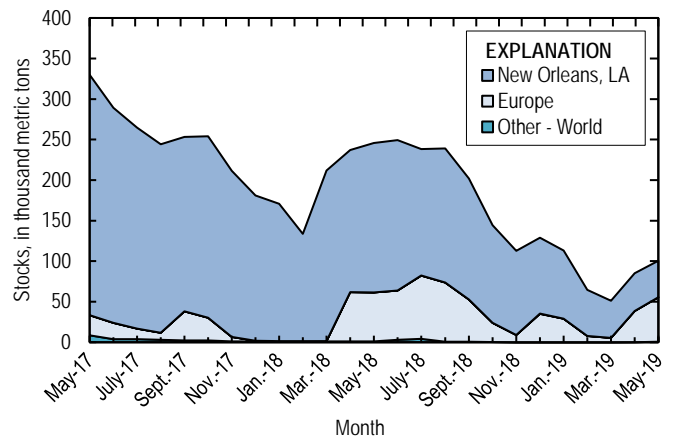


Figure 2. Global LME stocks of Special High Grade zinc, monthend, from May 2017 through May 2019. Source: London Metal Exchange Ltd.

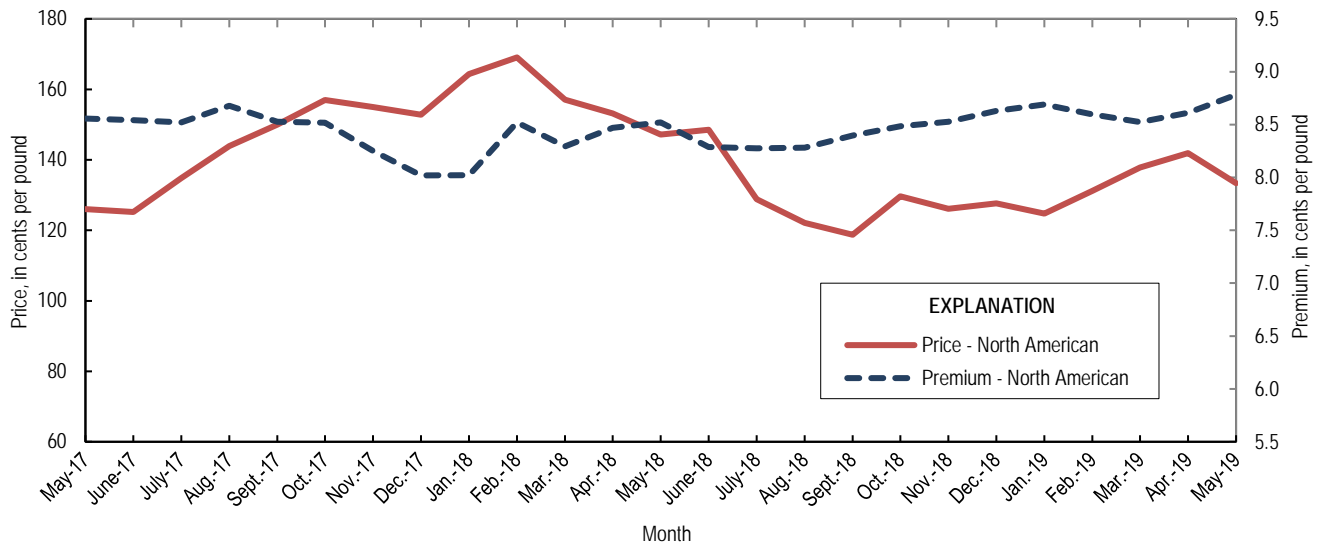


Figure 3. Average monthly North American price and premium for Special High Grade zinc from May 2017 through May 2019. Source: Platts Metals Week.

List services and web feed subscribers are the first to receive notification of USGS minerals information publications and data releases. For information on how to subscribe, go to <https://www.usgs.gov/centers/nmic/minerals-information-publication-list-services>.

TABLE 1
SALIENT ZINC STATISTICS¹

(Metric tons, unless otherwise specified)

	2018	2019		
	January– December ^p	April	May	January– May ²
Production:				
Mine, zinc content of concentrate ³	824,000	75,500	69,700	302,000
Mine, recoverable zinc ³	799,000	73,200	67,700	293,000
Smelter, refined zinc ^e	116,000	8,600	8,600	42,900
Consumption of refined zinc, apparent ⁴	868,000	74,700	76,400	378,000
Imports for consumption:				
Ore and concentrate (zinc content)	32	--	10	10
Refined zinc	775,000	66,400	68,200	339,000
Exports:				
Ore and concentrate (zinc content)	806,000	47,700	38,900	174,000
Refined zinc	23,300	306	365	3,280
Price:⁵				
London Metal Exchange cash, average, dollars per metric ton	2,924.55	2,937.96	2,746.79	2,759.30
Platts Metals Week North American, average, cents per pound	141.05	141.88	133.37	133.80

^cEstimated. ^pPreliminary. -- Zero.

¹Data are rounded to no more than three significant digits, except prices; may not add to totals shown.

²May include revisions to previously published data.

³Reported zinc content in both zinc and lead concentrates.

⁴Smelter production plus imports for consumption minus domestic exports.

⁵Special High Grade Zinc.

TABLE 2
MINE AND SMELTER PRODUCTION OF ZINC
IN THE UNITED STATES¹

(Metric tons)

Period	Mine ²		Smelter ^c
	Zinc content	Recoverable	
2018:			
May	72,200	69,900	11,300
June	76,700	74,200	11,300
July	76,400	73,900	9,920
August	68,800	66,500	9,920
September	70,000	68,900	9,920
October	79,600	77,000	11,900
November	55,700	53,900	11,900
December	76,700	74,200	11,900
January–December	824,000	799,000	116,000
2019:			
January	68,900	66,900	8,600
February	39,800	38,600	8,600
March	47,600	46,100	8,600
April	75,500	73,200	8,600
May	69,700	67,700	8,600
January–May	302,000	293,000	42,900

^cEstimated.

¹Data are rounded to no more than three significant digits; may not add to totals shown.

²Includes the zinc content in both lead and zinc concentrates.

TABLE 3
U.S. IMPORTS FOR CONSUMPTION OF ZINC¹

(Gross weight, unless otherwise specified)

Material	2018		2019			
	Quantity (metric tons)	Value (thousands)	May		January–May ²	
			Quantity (metric tons)	Value (thousands)	Quantity (metric tons)	Value (thousands)
Ore and concentrate (zinc content)	32	\$23	10	\$7	10	\$7
Unwrought:						
Refined zinc	775,000	2,350,000	68,200	197,000	339,000	943,000
Zinc alloys	4,390	14,300	207	645	1,310	3,770
Wrought:						
Bars, rods, profiles, wire	3,470	13,900	292	1,090	1,260	4,580
Plates, sheets, strip, foil	5,410	16,400	204	787	1,230	5,060
Ash and residues:						
Hard zinc spelter	19	31	--	--	--	--
Zinc dross and skimmings	4,300	8,200	345	618	1,480	2,480
Other (zinc content)	1,250	823	50	29	746	454
Other:						
Powders, flakes, dust	26,600	106,000	2,340	9,190	10,700	40,300
Waste and scrap	12,900	22,000	764	1,670	3,460	7,060
Chemicals:						
Lithopone	272	822	105	367	464	1,880
Zinc oxide	115,000	334,000	8,300	23,200	43,000	121,000
Zinc chloride	208	1,840	8	45	44	397
Zinc sulfate	98,800	106,000	5,770	5,110	30,200	28,900
Zinc sulfide	2,730	10,400	29	147	294	1,220

-- Zero.

¹Data are rounded to no more than three significant digits.

²May include revisions to previously published data.

Source: U.S. Census Bureau.

TABLE 4
U.S. IMPORTS OF ZINC, BY TYPE OF MATERIAL AND COUNTRY OR LOCALITY¹

(Metric tons, gross weight, unless otherwise specified)

Material and country or locality	General imports			Imports for consumption		
	2018	2019		2018	2019	
		May	January–May ²		May	January–May ²
Ore and concentrate (zinc content):						
Canada	(3)	10	10	(3)	10	10
China	32	--	--	32	--	--
Total	32	10	10	32	10	10
Refined zinc:						
Australia	--	--	--	676	--	--
Belgium	--	--	--	4,340	99	99
Brazil	601	--	1,910	601	--	1,910
Canada	524,000	44,800	223,000	524,000	44,800	223,000
China	22	1	11	5,380	51	2,070
India	2,840	--	--	2,840	--	--
Korea, Republic of	--	--	--	6,810	--	24
Mexico	101,000	15,200	56,000	101,000	15,200	56,000
Namibia	--	--	--	122	--	--
Netherlands	--	--	--	6,040	--	374
Peru	46,300	6,100	22,600	46,300	6,100	22,600
Poland	641	--	--	641	--	--
South Africa	5,480	--	--	--	--	--
Spain	20,000	--	--	76,100	1,830	32,000
Taiwan	36	(3)	16	36	(3)	16
Other	3	1	1	3	1	1
Total	701,000	66,200	304,000	775,000	68,200	339,000
Oxide:						
Australia	127	27	133	127	27	133
Belgium	6	18	29	6	18	29
Brazil	127	--	5	127	--	5
Canada	51,200	3,210	19,600	51,200	3,210	19,600
China	422	5	60	422	5	60
Germany	1,150	202	673	1,150	202	673
Greece	120	60	180	120	60	180
Hong Kong	58	--	5	58	--	5
India	119	(3)	44	119	(3)	44
Italy	19	--	8	19	--	8
Japan	776	45	451	776	45	451
Korea, Republic of	76	15	29	76	15	29
Mexico	49,800	3,580	16,600	49,800	3,580	16,600
Netherlands	8,400	832	3,810	8,400	832	3,810
Peru	2,540	284	900	2,540	284	900
Philippines	46	--	--	46	--	--
Russia	--	20	20	--	20	20
United Kingdom	105	8	334	105	8	334
Other	75	--	8	75	--	8
Total	115,000	8,300	43,000	115,000	8,300	43,000

-- Zero.

¹Data are rounded to no more than three significant digits; may not add to totals shown.

²May include revisions to previously published data.

³Less than ½ unit.

Source: U.S. Census Bureau.

TABLE 5
U.S. EXPORTS OF ZINC¹

(Gross weight, unless otherwise specified)

Material	2018		2019			
	Quantity (metric tons)	Value (thousands)	May		January–May ²	
			Quantity (metric tons)	Value (thousands)	Quantity (metric tons)	Value (thousands)
Ore and concentrate (zinc content)	806,000	\$1,530,000	38,900	\$56,100	174,000	\$261,000
Unwrought:						
Refined zinc	23,300	58,000	365	945	3,280	8,570
Zinc alloys	21,800	67,200	1,930	6,020	9,290	27,900
Wrought:						
Bars, rods, profiles, wire	10,600	30,600	905	3,320	4,130	12,500
Plates, sheets, strip, foil	7,170	29,900	543	2,240	2,510	9,960
Ash and residues:						
Hard zinc spelter	8,300	16,200	794	1,490	3,790	7,470
Other (zinc content)	23,900	43,000	2,040	3,920	9,840	16,200
Other:						
Powders, flakes, dust	13,500	56,600	1,150	4,150	7,500	26,800
Waste and scrap	40,400	49,800	2,830	4,040	15,100	20,600
Chemicals:						
Lithopone	179	1,280	36	145	73	384
Zinc oxide	60,200	91,800	887	2,480	4,600	11,800
Zinc chloride	281	440	8	24	126	177
Zinc sulfate	1,000	879	63	92	258	403
Zinc sulfide	1,730	15,900	122	1,320	778	6,770

¹Data are rounded to no more than three significant digits.

²May include revisions to previously published data.

Source: U.S. Census Bureau.

TABLE 6
AVERAGE PRICES FOR SPECIAL HIGH GRADE ZINC

Period	North	London Metal Exchange	
	American ¹	cash ²	
	¢/lb.	¢/lb.	\$/t
2018:			
May	147.20	138.68	3,057.41
June	148.50	140.22	3,091.21
July	128.85	120.57	2,658.18
August	122.14	113.85	2,510.05
September	118.74	110.35	2,432.71
October	129.65	121.17	2,671.26
November	126.11	117.58	2,592.28
December	127.69	119.06	2,624.87
January–December	141.05	132.66	2,924.55
2019:			
January	124.74	116.05	2,558.49
February	131.17	122.58	2,702.34
March	137.84	129.32	2,850.91
April	141.88	133.26	2,937.96
May	133.37	124.59	2,746.79
January–May	133.80	125.16	2,759.30

¹Platts Metals Week North American price. Based on the London Metal Exchange cash price plus premium.

²Average of the cash buyer price and the cash seller and settlement price.

Source: Platts Metals Week.

TABLE 7
LONDON METAL EXCHANGE (LME) STOCKS OF SPECIAL HIGH GRADE ZINC, END OF PERIOD

(Metric tons)

Period	United States			Europe	Other	Total LME
	Chicago, IL	New Orleans, LA	Total			
2018:						
May	--	184,125	184,125	60,650	875	245,650
June	--	185,425	185,425	60,650	3,175	249,250
July	--	155,900	155,900	78,150	4,075	238,125
August	--	165,375	165,375	73,125	675	239,175
September	--	149,350	149,350	51,900	675	201,925
October	--	120,400	120,400	23,525	250	144,175
November	--	103,575	103,575	8,975	25	112,575
December	350	93,625	93,975	35,000	25	129,000
2019:						
January	25	84,000	84,025	29,150	25	113,200
February	--	56,625	56,625	7,900	25	64,550
March	--	45,900	45,900	5,350	25	51,275
April	--	46,475	46,475	38,575	--	85,050
May	--	44,900	44,900	54,900	575	100,375

-- Zero.

Source: London Metal Exchange, Ltd.