

Mineral Industry Surveys

For information, contact:

Amy C. Tolcin, Zinc Commodity Specialist (Acting)
 National Minerals Information Center
 U.S. Geological Survey
 989 National Center
 Reston, VA 20192
 Telephone: (703) 648-4940 Fax: (703) 648-7757
 Email: atolcin@usgs.gov

Hodan A. Fatah (Data)
 Telephone: (703) 648-4971
 Fax: (703) 648-7975
 Email: hfatah@usgs.gov

Internet: <https://www.usgs.gov/centers/nmic>

ZINC IN MARCH 2020

Domestic mine production (recoverable) of zinc in March 2020 was 60,100 metric tons (t) (tables 1, 2). Average daily mine production in March was 1,940 t, 5% less than that in the previous month but 30% more than that in March 2019 (fig. 1).

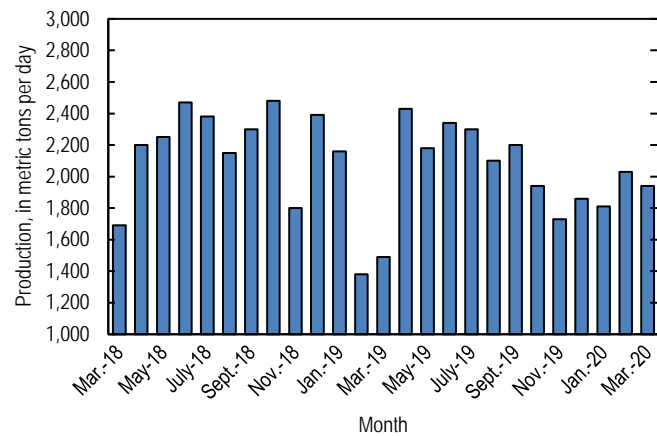


Figure 1. Average daily domestic zinc mine production (recoverable) from March 2018 through March 2020.

Stocks and Prices

Global London Metal Exchange Ltd. (LME) stocks of Special High Grade (SHG) zinc were 73,800 t at the end of March 2020, slightly less than stocks at the end of February but 44% more than at the end of March 2019 (fig. 2, table 8).

The monthly average Platts Metals Week North American SHG zinc price in March 2020 was \$0.95 per pound, 9% lower than that in the previous month and 31% lower than that in March 2019. The March 2020 average LME cash price for SHG zinc was \$1,905.33 per metric ton (\$0.86 per pound), 10% lower than that in February and 33% lower than that in March 2019 (fig. 3, table 7).

The North American premium to the LME cash price in March 2020 averaged 8.4 cents per pound, slightly less than that in the previous month and in March 2019 (fig. 3, table 7).

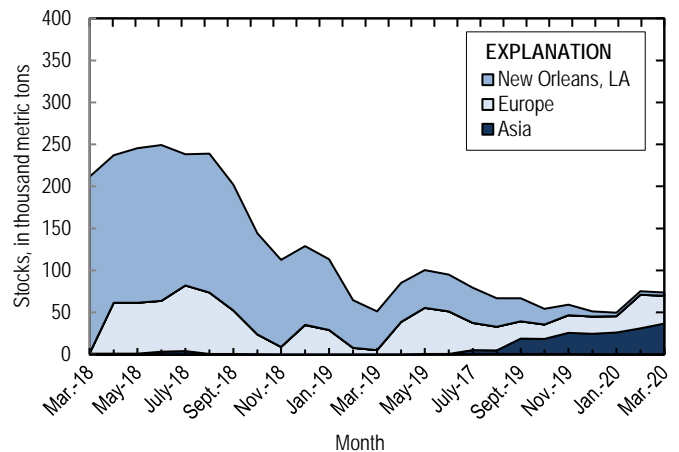


Figure 2. Global LME stocks of Special High Grade zinc, monthend, from March 2018 through March 2020. Source: London Metal Exchange Ltd.

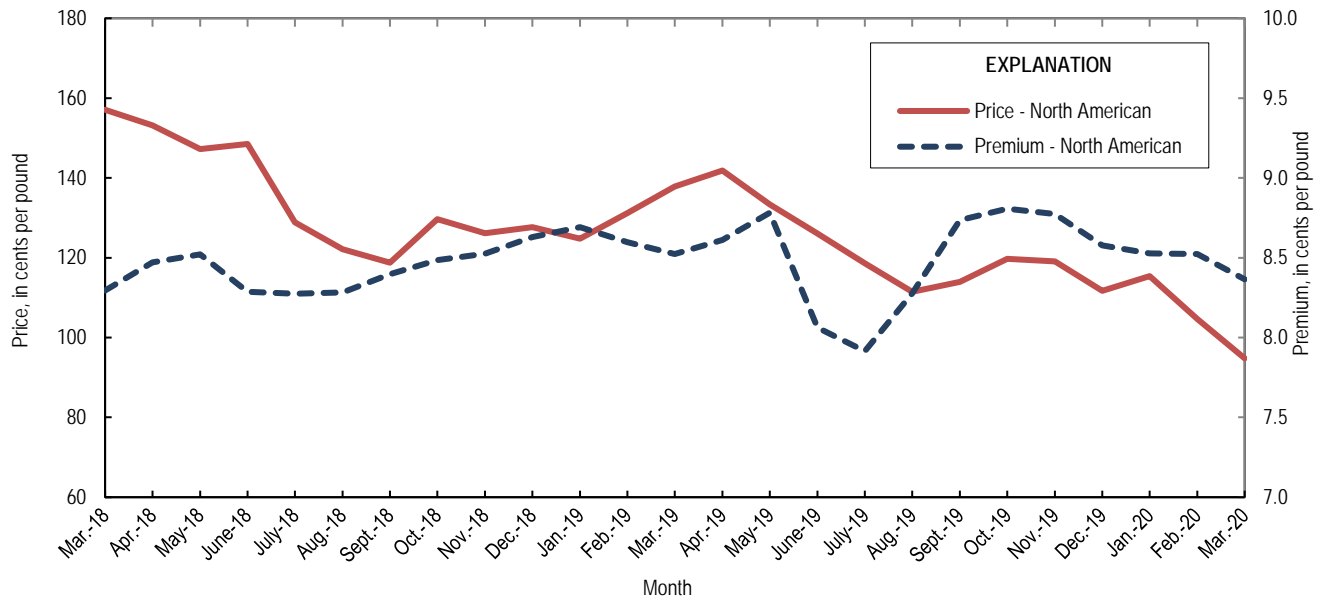


Figure 3. Average monthly North American price and premium for Special High Grade zinc from March 2018 through March 2020. Source: Platts Metals Week.

List services and web feed subscribers are the first to receive notification of USGS minerals information publications and data releases. For information on how to subscribe, go to <https://www.usgs.gov/centers/nmic/minerals-information-publication-list-services>.

TABLE 1
SALIENT ZINC STATISTICS¹

(Metric tons, unless otherwise specified)

	2019	2020		
	January– December ^p	February	March	January– March ²
Production:				
Mine, zinc content of concentrate ³	753,000 ^r	60,600 ^r	61,900	180,000
Mine, recoverable zinc ³	731,000 ^r	58,800 ^r	60,100	175,000
Smelter, refined zinc ^e	115,000	9,900	9,900	29,700
Consumption of refined zinc, apparent ⁴	939,000	60,600	82,900	222,000
Imports for consumption:				
Ore and concentrate (zinc content)	10	--	--	--
Refined zinc	830,000	50,900	73,400	194,000
Exports:				
Ore and concentrate (zinc content)	869,000	11,700	7,080	22,200
Refined zinc	5,170	153	393	1,030
Price:⁵				
London Metal Exchange cash, average, dollars per metric ton	2,548.63	2,119.90	1,905.33	2,127.28
Platts Metals Week North American, average, cents per pound	124.13	104.69	94.79	104.97

^eEstimated. ^pPreliminary. ^rRevised. -- Zero.

¹Data are rounded to no more than three significant digits, except prices; may not add to totals shown.

²May include revisions to previously published data.

³Reported zinc content in both zinc and lead concentrates.

⁴Smelter production plus imports for consumption minus domestic exports.

⁵Special High Grade Zinc.

TABLE 2
MINE AND SMELTER PRODUCTION OF ZINC
IN THE UNITED STATES¹

(Metric tons)

Period	Mine ²		Smelter ^e
	Zinc content	Recoverable	
2019:			
March	47,600	46,100	8,600
April	75,300	73,000	9,900
May	69,500	67,500	9,900
June	71,800	70,300	9,900
July	73,500	71,400	9,900
August	67,100	65,100	9,900
September	68,100	66,100	9,900
October	60,000 ^r	60,000 ^r	9,900
November	52,000 ^r	52,000 ^r	9,900
December	59,300 ^r	57,600 ^r	9,900
January–December	753,000 ^r	731,000 ^r	115,000
2020:			
January	57,700	56,000	9,900
February	60,600 ^r	58,800 ^r	9,900
March	61,900	60,100	9,900
January–March	180,000	175,000	29,700

^eEstimated. ^rRevised.

¹Data are rounded to no more than three significant digits; may not add to totals shown.

²Includes the zinc content in both lead and zinc concentrates.

TABLE 3
U.S. IMPORTS FOR CONSUMPTION OF ZINC¹

(Gross weight, unless otherwise specified)

Material	2019		2020			
	Quantity (metric tons)	Value (thousands)	March		January–March ²	
			Quantity (metric tons)	Value (thousands)	Quantity (metric tons)	Value (thousands)
Ore and concentrate (zinc content)	10	\$7	--	--	--	--
Unwrought:						
Refined zinc	830,000	2,190,000	73,400	\$163,000	194,000	\$450,000
Zinc alloys	1,530	4,480	68	94	235	538
Wrought:						
Bars, rods, profiles, wire	3,020	10,600	213	710	828	2,690
Plates, sheets, strip, foil	3,010	12,700	215	979	495	2,090
Ash and residues:						
Hard zinc spelter	20	17	--	--	--	--
Zinc dross and skimmings	3,750	5,980	456	615	1,380	1,970
Other (zinc content)	1,320	784	--	--	129	100
Other:						
Powders, flakes, dust	25,500	94,900	2,120	7,340	5,770	20,100
Waste and scrap	10,400	18,200	820	1,470	2,190	3,940
Chemicals:						
Lithopone	1,170	4,240	196	806	315	1,290
Zinc oxide	99,300	272,000	10,500	26,300	30,600	78,700
Zinc chloride	196	1,450	29	169	95	493
Zinc sulfate	71,700	64,300	6,400	5,000	21,600	16,400
Zinc sulfide	956	3,590	64	483	325	1,760

-- Zero.

¹Data are rounded to no more than three significant digits.

²May include revisions to previously published data.

Source: U.S. Census Bureau.

TABLE 4
U.S. IMPORTS OF ZINC, BY TYPE OF MATERIAL AND COUNTRY OR LOCALITY¹

(Metric tons, gross weight, unless otherwise specified)

Material and country or locality	General imports			Imports for consumption		
	2019	2020		2019	2020	
		March	January–March ²		March	January–March ²
Ore and concentrate (zinc content), Canada	10	--	--	10	--	--
Refined zinc:						
Belgium	--	--	--	393	1	1
Brazil	11,300	243	5,040	11,300	243	5,040
Canada	517,000	50,700	132,000	517,000	50,700	132,000
China	49	(3)	6	5,770	(3)	6
Korea, Republic of	8,110	997	1,500	8,340	997	1,500
Mexico	142,000	14,100	36,700	142,000	14,100	36,700
Netherlands	--	--	--	3,420	--	--
Peru	59,300	7,280	18,400	59,300	7,280	18,400
Poland	268	--	--	268	--	--
Spain	14,500	--	--	81,900	--	98
Taiwan	62	--	--	62	--	--
Other	6	--	--	6	--	--
Total	753,000	73,400	194,000	830,000	73,400	194,000
Oxide:						
Australia	394	42	185	394	42	185
Belgium	30	--	--	30	--	--
Brazil	5	--	--	5	--	--
Canada	44,100	5,160	14,100	44,100	5,160	14,100
China	187	2	5	187	2	5
El Salvador	20	--	--	20	--	--
France	18	4	5	18	4	5
Germany	1,300	104	276	1,300	104	276
Greece	300	100	259	300	100	259
India	74	24	24	74	24	24
Indonesia	103	--	--	103	--	--
Israel	--	--	10	--	--	10
Italy	42	3	3	42	3	3
Japan	927	58	207	927	58	207
Korea, Republic of	96	5	46	96	5	46
Mexico	39,000	4,150	12,800	39,000	4,150	12,800
Netherlands	9,270	344	1,560	9,270	344	1,560
Peru	2,990	520	987	2,990	520	987
Russia	20	--	--	20	--	--
United Kingdom	425	(3)	15	425	(3)	15
Other	6 ^r	6	7	6 ^r	6	7
Total	99,300	10,500	30,600	99,300	10,500	30,600

^rRevised. -- Zero.

¹Data are rounded to no more than three significant digits; may not add to totals shown.

²May include revisions to previously published data.

³Less than ½ unit.

Source: U.S. Census Bureau.

TABLE 5
U.S. EXPORTS OF ZINC¹

(Gross weight, unless otherwise specified)

Material	2019		2020			
	Quantity (metric tons)	Value (thousands)	March		January–March ²	
			Quantity (metric tons)	Value (thousands)	Quantity (metric tons)	Value (thousands)
Ore and concentrate (zinc content)	869,000	\$1,400,000	7,080	\$10,300	22,200	\$31,200
Unwrought:						
Refined zinc	5,170	14,300	393	1,080	1,030	2,870
Zinc alloys	21,600	63,500	2,500	6,530	5,810	15,700
Wrought:						
Bars, rods, profiles, wire	10,200	30,300	856	2,780	2,370	7,690
Plates, sheets, strip, foil	6,190	24,500	507	1,890	1,440	5,560
Ash and residues:						
Hard zinc spelter	9,370	16,700	823	1,090	2,310	3,190
Other (zinc content)	25,000	38,600	2,150	2,610	5,590	7,150
Other:						
Powders, flakes, dust	13,400	48,500	983	3,230	2,870	9,840
Waste and scrap	30,800	40,100	2,890	3,550	7,630	9,210
Chemicals:						
Lithopone	170	905	18	98	79	429
Zinc oxide	15,200	30,900	1,020	2,110	2,780	6,490
Zinc chloride	185	316	58	62	147	348
Zinc sulfate	486	648	61	54	101	113
Zinc sulfide	2,070	17,300	188	1,490	517	3,360

¹Data are rounded to no more than three significant digits.

²May include revisions to previously published data.

Source: U.S. Census Bureau.

TABLE 6
U.S. EXPORTS OF ZINC, BY TYPE OF MATERIAL AND COUNTRY OR LOCALITY¹

(Metric tons, gross weight, unless otherwise specified)

Material and country or locality	2019	2020	
		March	January-March ²
Ore and concentrate (zinc content):			
Australia	64,100	--	--
Belgium	107,000	--	--
Brazil	7,030	--	--
Canada	268,000	2,820	10,400
Finland	29,400	--	--
Germany	29,200	--	--
Italy	33,800	--	--
Japan	90,200	1,350	3,380
Korea, Republic of	70,100	2,910	8,340
Mexico	31,200	--	--
Peru	5,000	--	120
Spain	116,000	--	--
Switzerland	17,500	--	--
Other	83	1	6
Total	869,000	7,080	22,200
Refined zinc:			
Australia	46	--	7
Canada	928	86	224
China	502	--	--
Colombia	98	--	--
Guatemala	17	--	10
India	132	--	201
Indonesia	375	--	--
Malaysia	625	--	--
Mexico	1,800	222	486
Panama	39	--	--
South Africa	438	--	--
Vietnam	40	84	104
Other	135	1	1
Total	5,170	393	1,030
Oxide:			
Australia	127	60	160
Belgium	90	36	38
Brazil	455	17	123
Canada	4,860	186	967
China	457	11	61
France	14	155	155
Germany	131	--	84
Guyana	124	18	18
India	825	21	59
Mexico	7,140	446	797
Poland	177	--	16
Thailand	123	1	1
United Kingdom	127	--	101
Other	506	65	202
Total	15,200	1,020	2,780

-- Zero.

¹Data are rounded to no more than three significant digits; may not add to totals shown.

²May include revisions to previously published data.

Source: U.S. Census Bureau.

TABLE 7
AVERAGE PRICES FOR SPECIAL HIGH GRADE ZINC

Period	North American		London Metal Exchange	
	Premium	Price ¹	cash ²	
	¢/lb.	¢/lb.	¢/lb.	\$/t
2019:				
March	8.5	137.84	129.32	2,850.91
April	8.6	141.88	133.26	2,937.96
May	8.8	133.37	124.59	2,746.79
June	8.1	126.07	118.01	2,601.56
July	7.9	118.64	110.72	2,440.96
August	8.3	111.45	103.17	2,274.60
September	8.7	113.93	105.20	2,319.16
October	8.8	119.71	110.90	2,444.99
November	8.8	119.11	110.33	2,432.43
December	8.6	111.70	103.12	2,273.40
January–December	8.5	124.13	115.60	2,548.63
2020:				
January	8.5	115.42	106.89	2,356.60
February	8.5	104.69	96.16	2,119.90
March	8.4	94.79	86.42	1,905.33
January–March	8.5	104.97	96.49	2,127.28

¹Platts Metals Week North American price. Based on the London Metal Exchange cash price plus the North American premium.

²Average of the cash buyer price and the cash seller and settlement price.

Source: Platts Metals Week.

TABLE 8
LONDON METAL EXCHANGE (LME) STOCKS OF SPECIAL HIGH GRADE ZINC, END OF PERIOD

(Metric tons)

Period	United States		Asia	Europe	Other	Total LME
	New Orleans, LA	Total				
2019:						
March	45,900	45,900	--	5,350	25	51,275
April	46,475	46,475	--	38,575	--	85,050
May	44,900	44,900	325	54,900	250	100,375
June	43,825	43,825	600	50,500	200	95,125
July	41,925	41,925	4,475	32,325	625	79,350
August	33,875	33,875	4,150	28,375	575	66,975
September	27,175	27,175	18,275	20,725	575	66,750
October	18,850	18,850	17,975	17,100	575	54,500
November	12,475	12,475	25,175	20,975	575	59,200
December	6,125	6,125	24,350	20,350	375	51,200
2020:						
January	4,150	4,150	25,950	19,300	375	49,775
February	4,100	4,100	30,750	40,000	350	75,200
March	4,000	4,000	36,650	32,950	200	73,800

-- Zero.

Source: London Metal Exchange, Ltd.