

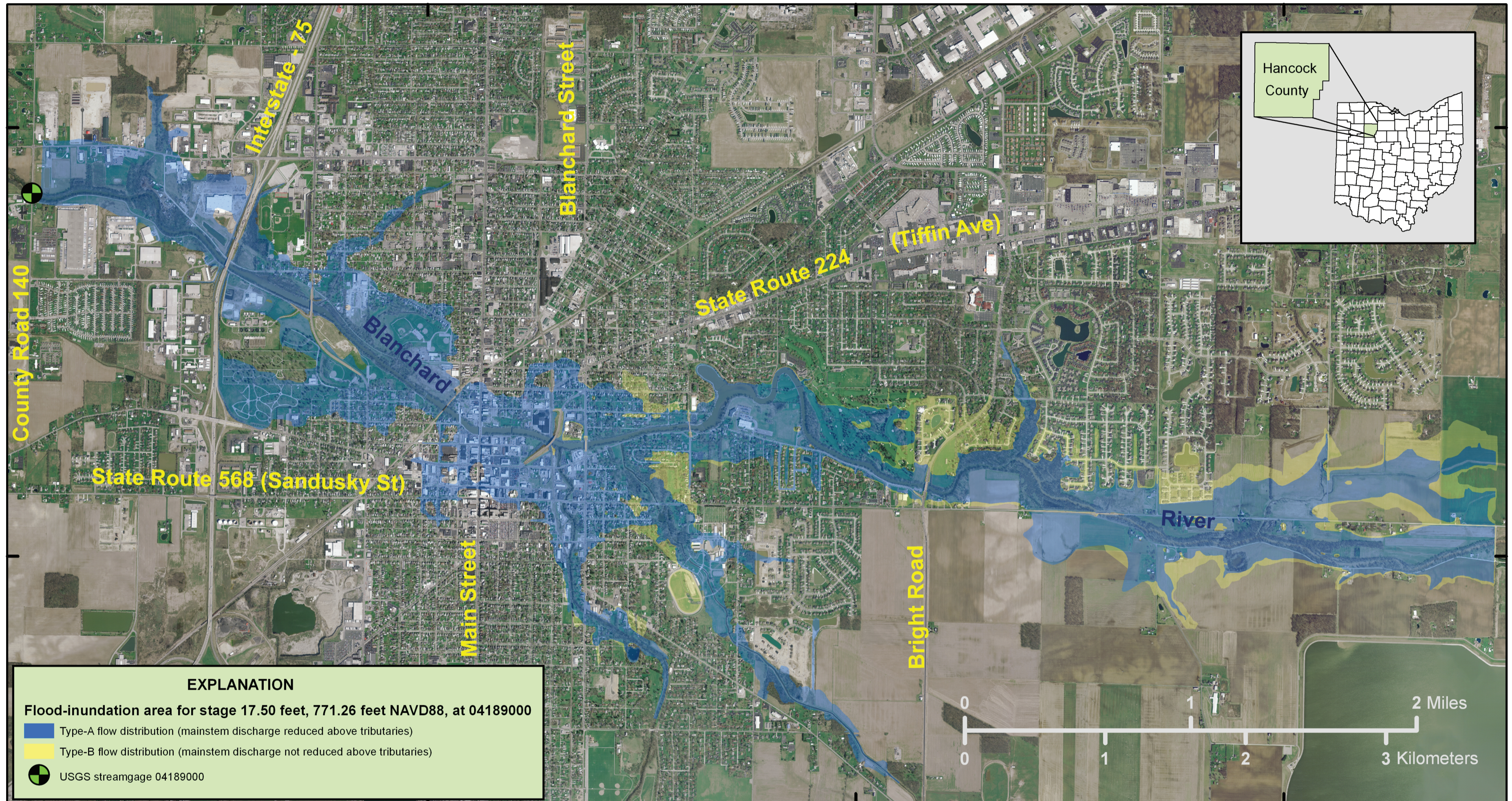
1,650,000

1,660,000

1,670,000

510,000

500,000



Base from U.S. Geological Survey, variously scaled, 2007
Orthophotography from Ohio Department of Administrative Services, Office of Information Technology,
Ohio Geographically Referenced Information Program, Ohio Statewide Imagery Program, 2006
State Plane projection, Ohio North
Horizontal coordinate information is referenced to the North American Datum of 1983 (NAD83)

DISCLAIMER Flood boundaries shown reflect unobstructed flooding or backwater from only the Blanchard River. Additional areas may be flooded if the river becomes obstructed or as a result of flooding from tributary streams. Residents living near tributaries of the Blanchard River should be particularly cautious due to added uncertainty associated with the potential for flooding from multiple sources.

Plate 10. Flood-inundation areas for Blanchard River near Findlay, Ohio (station 04189000), for type-A and type-B flow distributions, stage of 17.50 feet