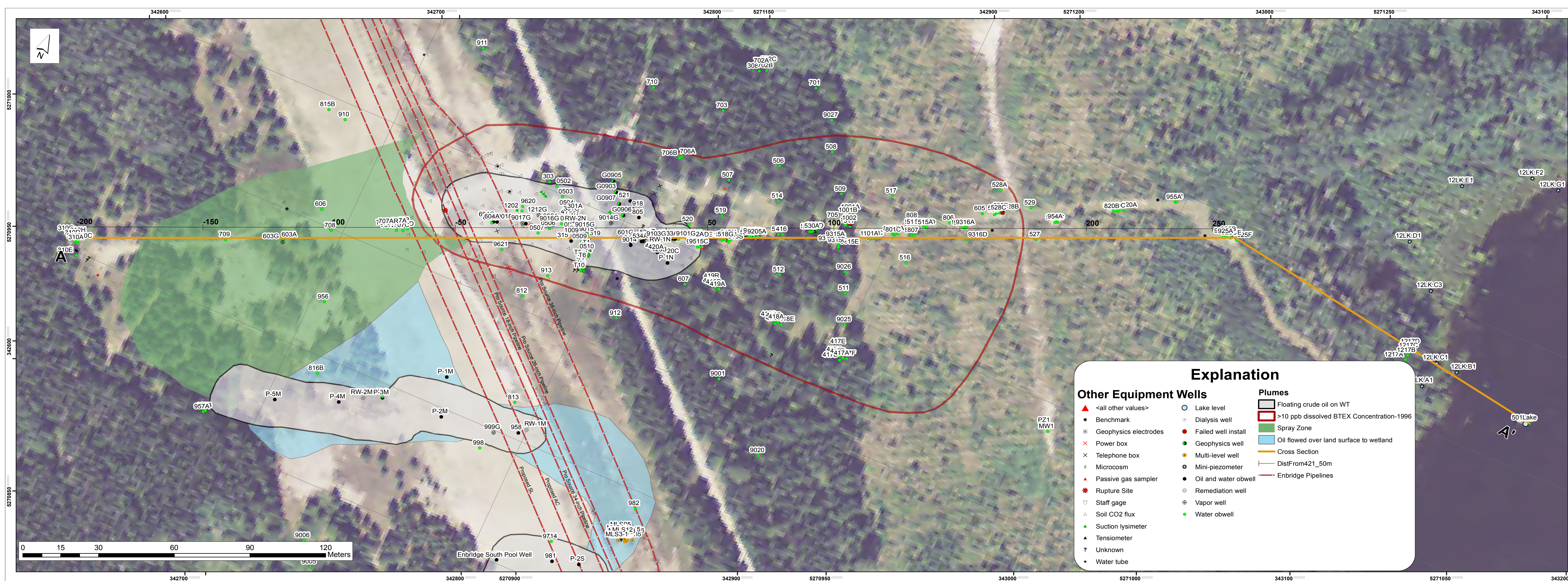


Well locations, geology, and approximate extent of dissolved petroleum hydrocarbons (BTEX) along cross section A-A', September 1996. And zones of low dissolved oxygen (<1.0 mg/L) in 2008.



Cross Section Area at the Bemidji Crude Oil Spill Site

Aerial Photo Source: 2010 FSA UTM NAD83 Zone 15