

# EORES Conceptual Data Model

## Updated to Release 9.1.2

### Release Notes

#### General:

- No changes to content. Only change is the update to Release 9.1.2

#### EOR:

- No changes.

#### EOS:

- No changes.

#### VTI:

- No changes.

The following should be added to the base web service URL for EORES:

### EOS Web Service URLs

- ws/get\_reports\_network\_basic\_information
- ws/get\_reports\_network\_cost\_information
- ws/get\_reports\_network\_documentation
- ws/get\_reports\_network\_key\_dates
- ws/get\_reports\_network\_organizational\_affiliations
- ws/get\_reports\_network\_palma\_id
- ws/get\_reports\_network\_poc
- ws/get\_reports\_observing\_system\_basic\_information
- ws/get\_reports\_observing\_system\_cost\_information
- ws/get\_reports\_observing\_system\_documentation
- ws/get\_reports\_observing\_system\_key\_dates
- ws/get\_reports\_observing\_system\_organizational\_affiliations
- ws/get\_reports\_observing\_system\_palma\_id
- ws/get\_reports\_observing\_system\_poc
- ws/get\_reports\_platform\_aliases
- ws/get\_reports\_platform\_basic\_information
- ws/get\_reports\_platform\_cost\_information
- ws/get\_reports\_platform\_deployment\_profile
- ws/get\_reports\_platform\_documentation
- ws/get\_reports\_platform\_key\_dates
- ws/get\_reports\_platform\_organizational\_affiliations
- ws/get\_reports\_platform\_palma\_id
- ws/get\_reports\_platform\_poc
- ws/get\_reports\_sensing\_element\_basic\_information
- ws/get\_reports\_sensing\_element\_cost\_information
- ws/get\_reports\_sensing\_element\_documentation
- ws/get\_reports\_sensing\_element\_key\_dates
- ws/get\_reports\_sensing\_element\_organizational\_affiliations
- ws/get\_reports\_sensing\_element\_palma\_id
- ws/get\_reports\_sensing\_element\_poc
- ws/get\_reports\_sensing\_element\_spectral\_bands
- ws/get\_reports\_sensing\_element\_spectral\_regions
- ws/get\_reports\_sensing\_element\_radar\_bands
- ws/get\_reports\_environmental\_parameter\_basic\_information
- ws/get\_reports\_environmental\_parameter\_documentation
- ws/get\_reports\_environmental\_parameter\_palma\_id
- ws/get\_reports\_eos\_only\_gcmd\_path
- ws/get\_reports\_eos\_hierarchy
- ws/get\_reports\_network\_observing\_system\_associations
- ws/get\_reports\_observing\_system\_platform\_associations
- ws/get\_reports\_platform\_sensing\_element\_associations
- ws/get\_reports\_sensing\_element\_environmental\_parameter\_associations

### EOR Web Service URLs

- ws/get\_reports\_eor\_basic\_information
- ws/get\_reports\_eor\_documentation
- ws/get\_reports\_eor\_extended\_attribute\_information
- ws/get\_reports\_eor\_gcmd\_information
- ws/get\_reports\_eor\_key\_dates
- ws/get\_reports\_eor\_organizational\_affiliations
- ws/get\_reports\_eor\_poc
- ws/get\_reports\_eor\_remote\_sensing\_attribute\_information
- ws/get\_reports\_eor\_spectral\_requirements
- ws/get\_reports\_eor\_standard\_attribute\_information
- ws/get\_reports\_eor\_strategic\_affiliations
- ws/get\_reports\_eor\_surveyed\_product\_connections
- ws/get\_reports\_eor\_validation\_information
- ws/get\_reports\_eor\_value\_tree\_connections
- ws/get\_reports\_eor\_only\_gcmd\_path

### VTI Web Service URLs

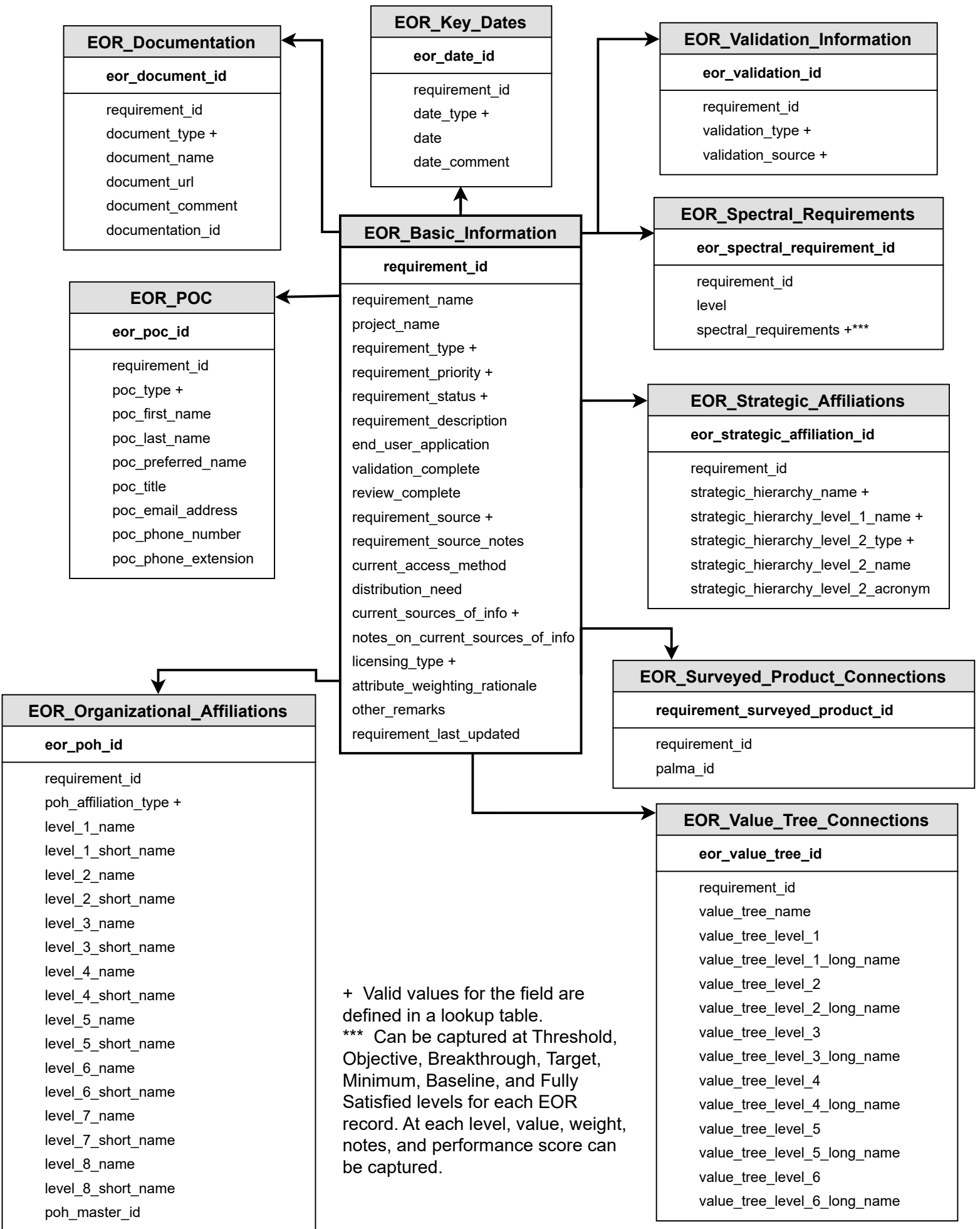
- ws/get\_reports\_value\_tree\_name
- ws/get\_reports\_data\_source\_groups/EOA2016
- ws/get\_reports\_data\_sources/EOA2016
- ws/get\_reports\_elicitation\_documentation/EOA2016
- ws/get\_reports\_elicitation\_poc/EOA2016
- ws/get\_reports\_surveyed\_product\_elicitation\_information/EOA2016
- ws/get\_reports\_surveyed\_product\_to\_data\_source/EOA2016
- ws/get\_reports\_data\_source\_to\_surveyed\_product/EOA2016
- ws/get\_reports\_surveyed\_product\_to\_value\_tree\_node/EOA2016
- ws/get\_reports\_value\_tree\_node/EOA2016
- ws/get\_reports\_value\_tree\_node\_documentation/EOA2016
- ws/get\_reports\_value\_tree\_node\_poc/EOA2016

For these URLs, the end of the URL is the name of the value tree dataset (e.g. "EOA2016" in the links listed above). Simply replace this text with the name of another value tree dataset in the database (e.g. "NOSIA-II" or "RCA-EO") to pull information specific to that value tree.

### General Web Service URLs

- ws/get\_reports\_gcmd\_master
- ws/get\_reports\_person
- ws/get\_reports\_physical\_organization\_hierarchy
- ws/get\_reports\_geographic\_coverage
- ws/get\_reports\_documentation

# EOR - Requirements and Associated Information



# EOR - Requirements GCMD and Attribute Information

EOR_GCMD_Information
<b>requirement_id</b>
primary_gcmd_master_id primary_gcmd_category + primary_gcmd_topic + primary_gcmd_term + primary_gcmd_variable + primary_gcmd_variable_l2 + primary_gcmd_variable_l3 + primary_gcmd_detailed_variable + secondary_gcmd_master_id secondary_gcmd_category + secondary_gcmd_topic + secondary_gcmd_term + secondary_gcmd_variable + secondary_gcmd_variable_l2 + secondary_gcmd_variable_l3 + secondary_gcmd_detailed_variable + tertiary_gcmd_master_id tertiary_gcmd_category + tertiary_gcmd_topic + tertiary_gcmd_term + tertiary_gcmd_variable + tertiary_gcmd_variable_l2 + tertiary_gcmd_variable_l3 + tertiary_gcmd_detailed_variable +

EOR_Standard_Attribute_Information
<b>requirement_id</b>
level geographic_coverage +*** horizontal_resolution * measurement_accuracy * sampling_interval * vertical_resolution *

EOR_Extended_Attribute_Information
<b>requirement_id</b>
level data_latency * long_term_stability ** measurement_range ** ods_fit_hrs_hods * vertical_range ** length_of_data_record ** other_accuracy *

EOR_only_gcmd_path
<b>requirement_id</b>
gcmd_master_id gcmd_category + gcmd_topic + gcmd_term + l1_variable + l2_variable + l3_variable + detailed_variable +

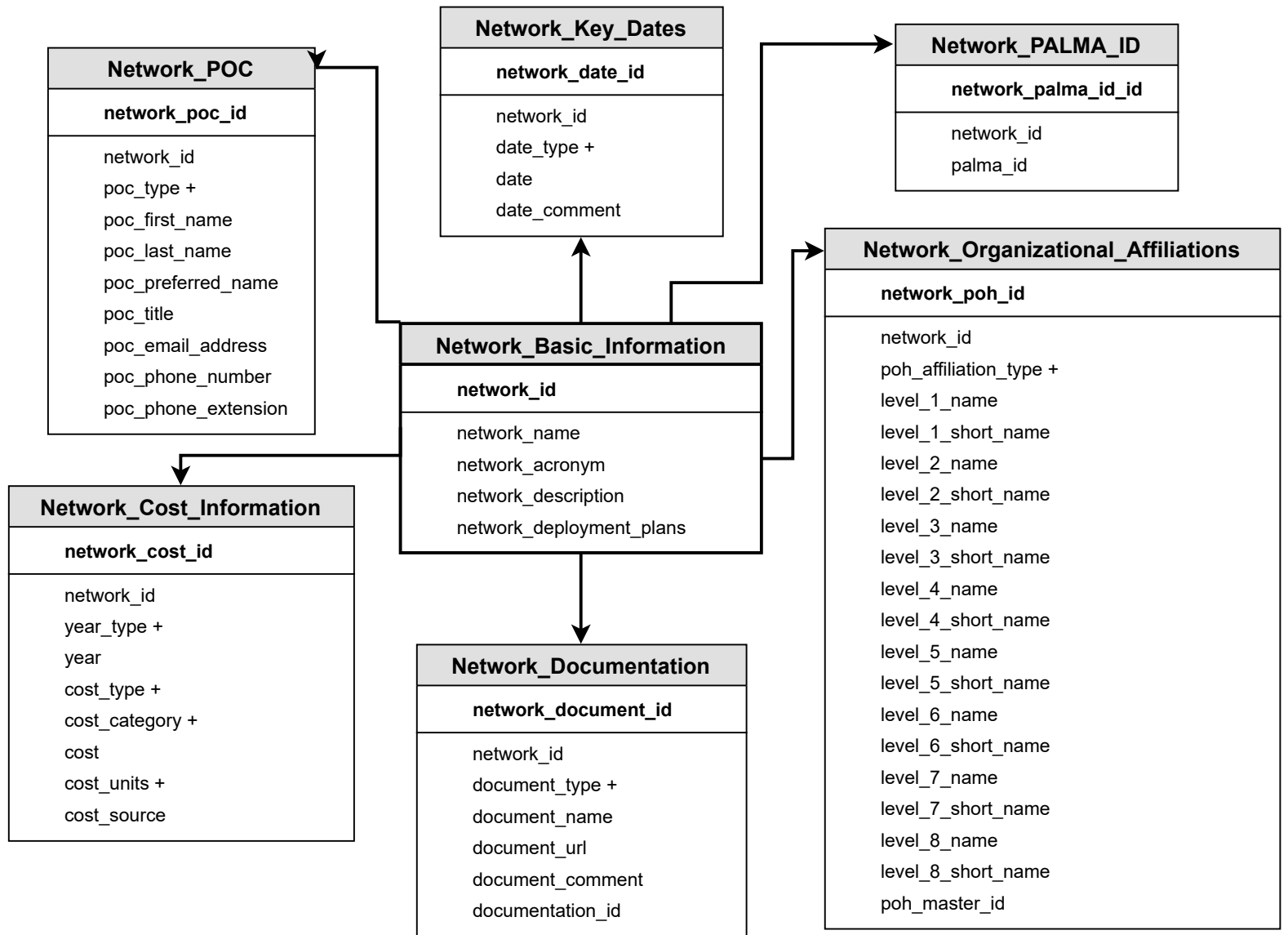
EOR_Remote_Sensing_Attribute_Information
<b>requirement_id</b>
level radiometric_resolution * horizontal_geolocation_accuracy * sampling_conditions +** signal_to_noise_ratio * vertical_geolocation_accuracy *

+ Valid values for the field are defined in a lookup table.

\* Can be captured at Threshold, Objective, Breakthrough, Target, Minimum, Baseline, and Fully Satisfied levels for each EOR record. At each level, value, units, weight, trend, notes, and performance score can be captured.

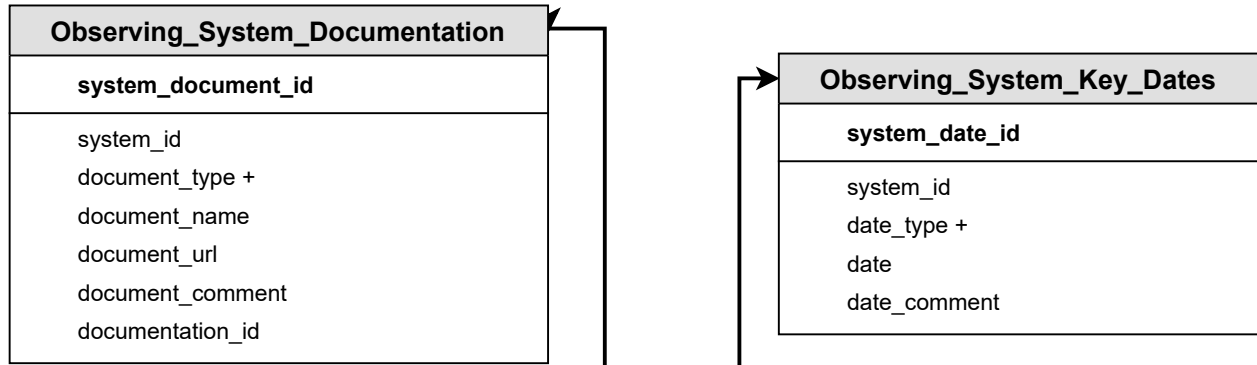
\*\* Can be captured at Threshold, Objective, Breakthrough, Target, Minimum, Baseline, and Fully Satisfied levels for each EOR record. At each level, value, units, weight, notes, and performance score can be captured.

# EOS - Observing Networks and Associated Information



+ Valid values for the field are defined in a lookup table.

# EOS - Observing Systems and Associated Information



Observing_System_POC
<b>system_poc_id</b>
system_id
poc_type +
poc_first_name
poc_last_name
poc_preferred_name
poc_title
poc_email_address
poc_phone_number
poc_phone_extension

Observing_System_Basic_Information
<b>system_id</b>
system_name
system_acronym
system_type +
system_description
system_intended_use +
system_life_cycle_phase +
system_deployment_plans
osc_baseline_observing_system_category +
country_names +
country_code
date_last_updated

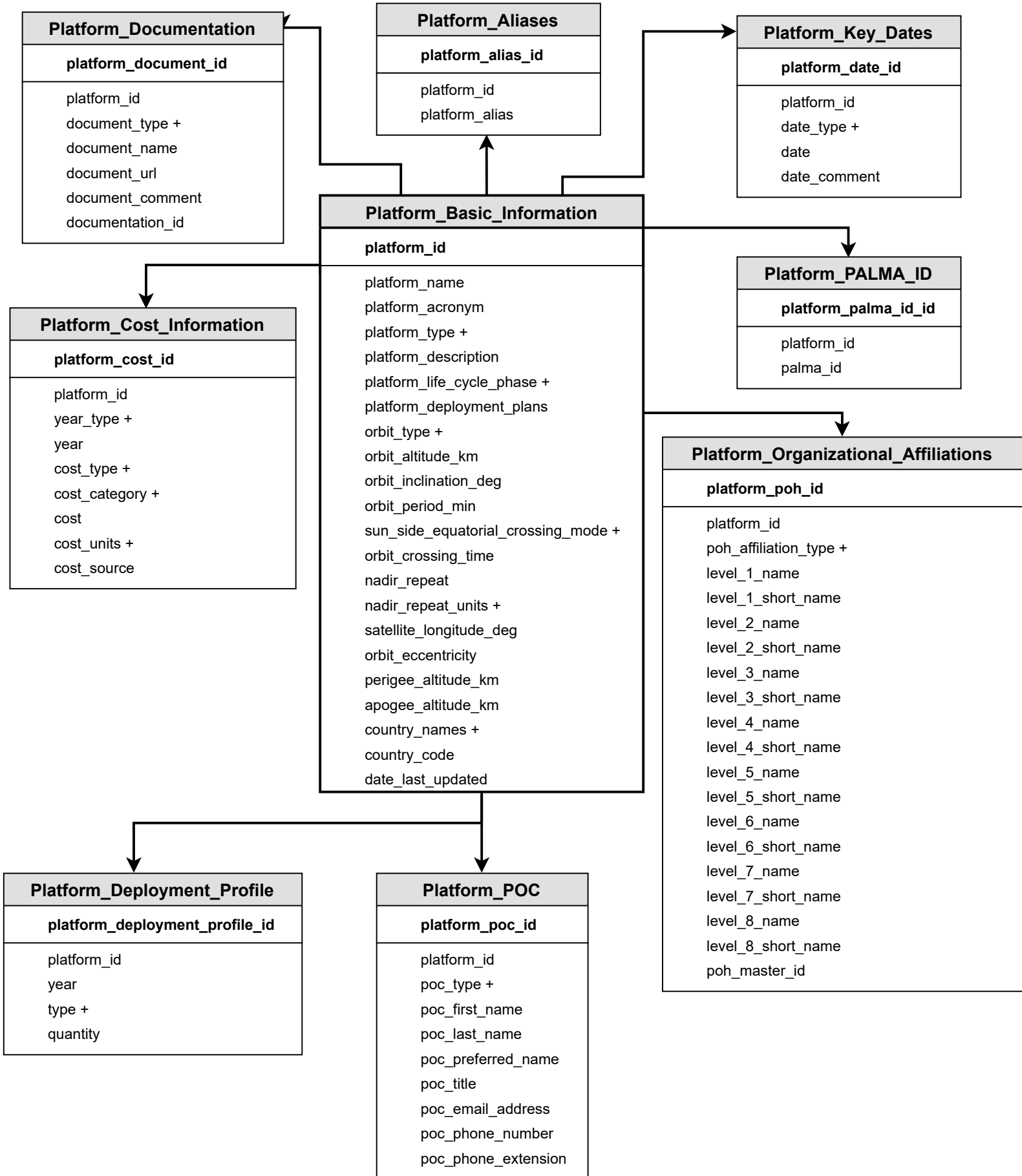
Observing_System_PALMA_ID
<b>system_palma_id_id</b>
system_id
palma_id

Observing System_Cost_Information
<b>system_cost_id</b>
system_id
year_type +
year
cost_type +
cost_category +
cost
cost_units +
cost_source

Observing_System_Organizational_Affiliations
<b>observing_system_poh_id</b>
system_id
poh_affiliation_type +
level_1_name
level_1_short_name
level_2_name
level_2_short_name
level_3_name
level_3_short_name
level_4_name
level_4_short_name
level_5_name
level_5_short_name
level_6_name
level_6_short_name
level_7_name
level_7_short_name
level_8_name
level_8_short_name
poh_master_id

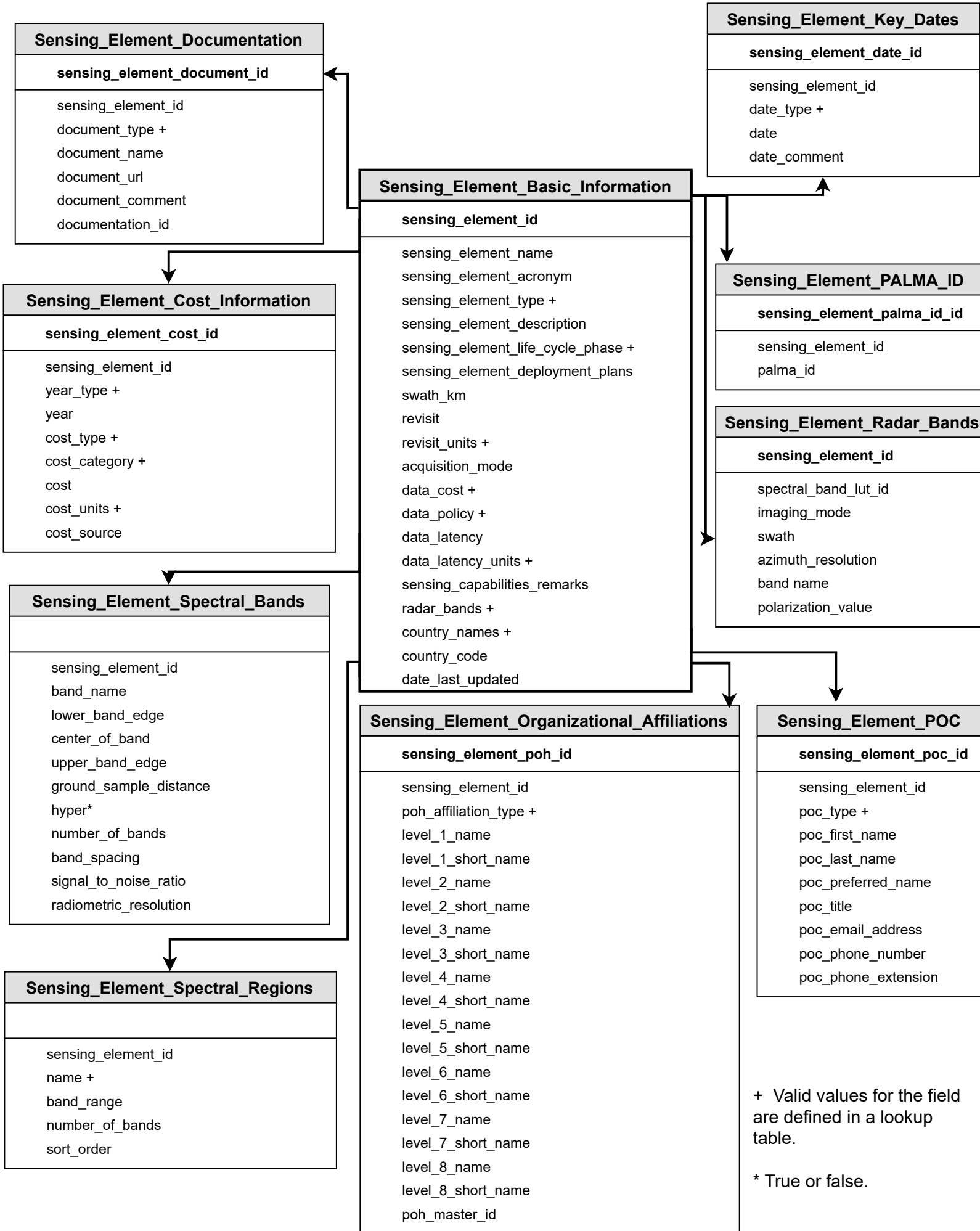
+ Valid values for the field are defined in a lookup table.

# EOS - Platforms and Associated Information



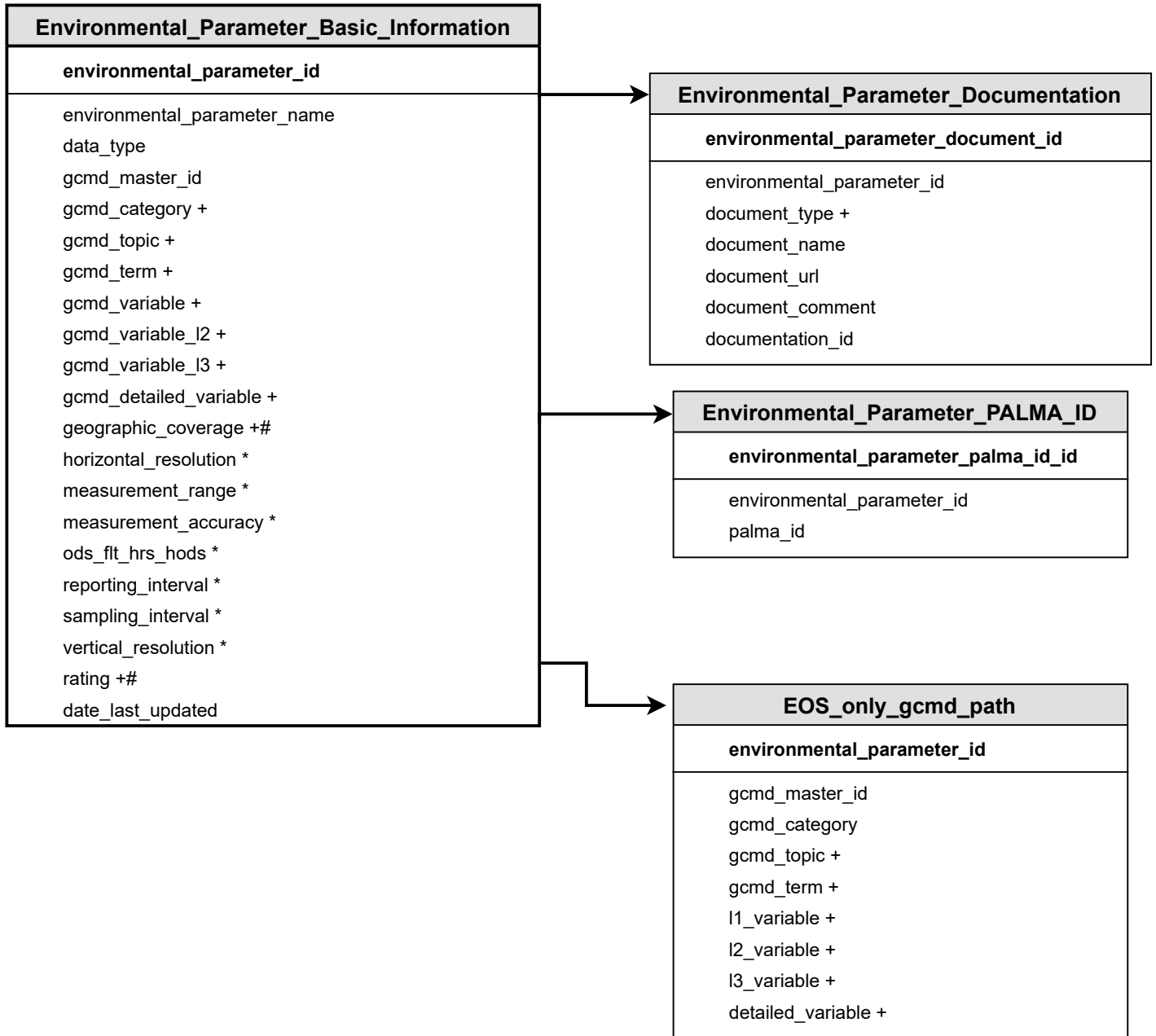
+ Valid values for the field are defined in a lookup table.

# EOS - Sensing Elements and Associated Information



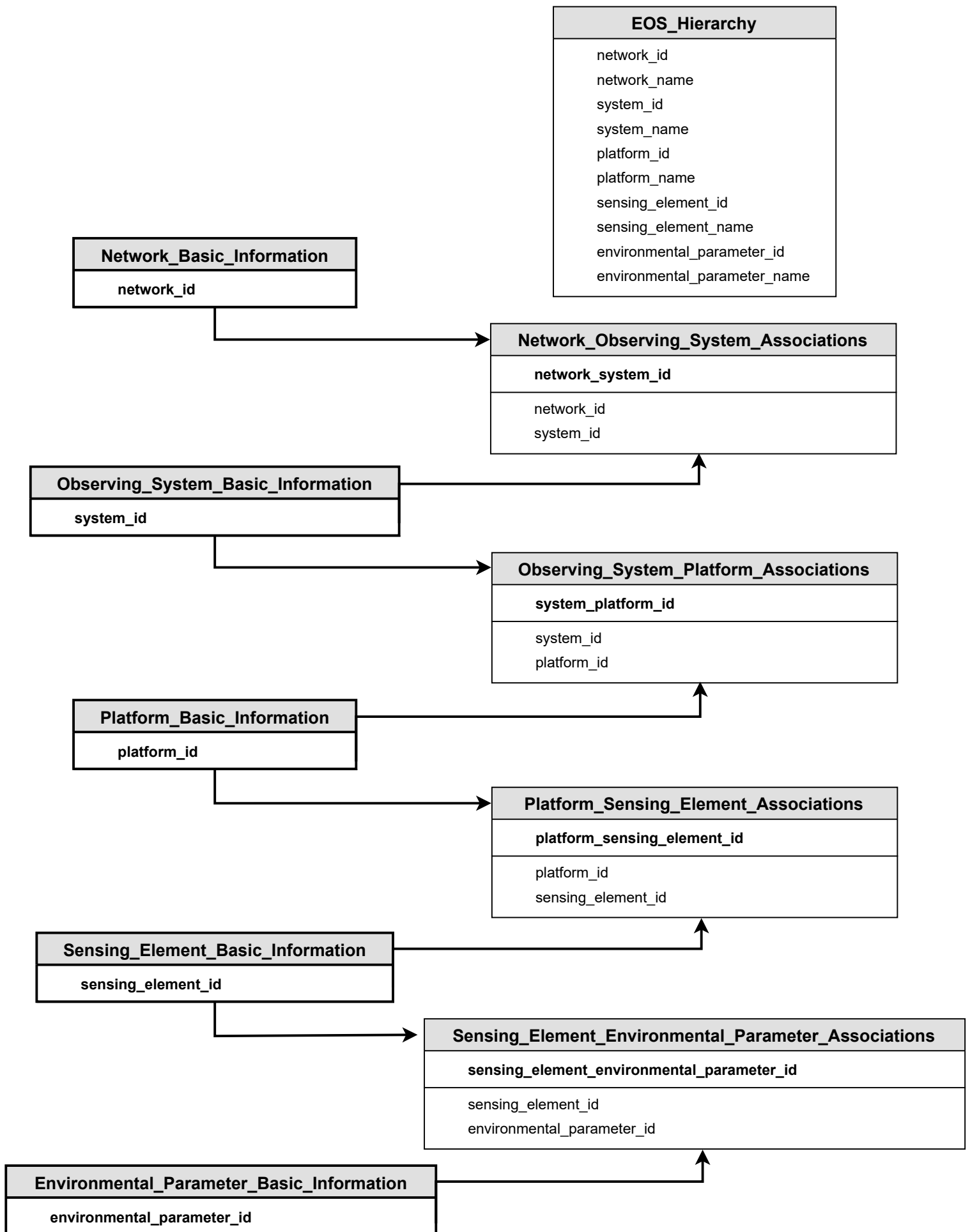


# EOS - Environmental Parameters and Associated Information



\* Value, units, and notes can be captured.  
 + Valid values for the field are defined in a lookup table.  
 # Notes can be captured.

# EOS - Observing System Hierarchy Associations



# VTI - Value Tree Information

Value_Tree_Node_POC
value_tree_node_poc_id
value_tree_node_id value_tree_name poc_type + poc_first_name poc_last_name poc_preferred_name poc_title poc_email_address poc_phone_number poc_phone_extension description

Value_Tree_Node
value_tree_node_id
value_tree_name value_tree_level_1 value_tree_level_1_long_name value_tree_level_1_type value_tree_level_2 value_tree_level_2_long_name value_tree_level_2_type value_tree_level_3 value_tree_level_3_long_name value_tree_level_3_type value_tree_level_4 value_tree_level_4_long_name value_tree_level_4_type value_tree_level_5 value_tree_level_5_long_name value_tree_level_5_type value_tree_level_6 value_tree_level_6_long_name value_tree_level_6_type node_description node_weight subtree_name

Value_Tree_Node_Documentation
value_tree_node_document_id
value_tree_node_id value_tree_name document_type + document_name document_url document_comment documentation_id

Surveyed_Product_to_Value_Tree_Node
surveyed_product_value_tree_node_id
surveyed_product_elicitation_id value_tree_node_id value_tree_name surveyed_product_weight

Surveyed_Product_Elicitation_Information
surveyed_product_elicitation_id
value_tree_name surveyed_product_name palma_id key_surveyed_product poh_id elicitation_date elicitation_comments surveyed_product_description status_quo_score status_quo_score_note low_side_score high_side_score

Surveyed_Product_to_Data_Source
surveyed_product_data_source_id
surveyed_product_elicitation_id level_1_data_source_id level_2_data_source_id value_tree_name score_type +* score_value score_comment overall_satisfaction_score overall_satisfaction_score_comment

Data_Source_Groups
data_source_group_id
data_source_id value_tree_name group_type + group_name

\* Score Types are Swing Weight and Weighted Average.  
+ Valid values for the field are defined in a lookup table.

Elicitation_Documentation
elicitation_documentation_id
surveyed_product_elicitation_id value_tree_name document_type + document_name document_url document_comment documentation_id

Value_Tree_Name
name

Elicitation_POC
elicitation_poc_id
surveyed_product_elicitation_id surveyed_product_elicitation_id value_tree_name poc_type + poc_first_name poc_last_name poc_preferred_name poc_title poc_email_address poc_phone_number poc_phone_extension sme_years_of_experience elicitation_team_member_remarks

Data_Source_to_Surveyed_Product
surveyed_product_elicitation_id
data_source_id data_source_level value_tree_name

Data_Sources
data_source_id
data_source_name value_tree_name data_source_type + data_source_palma_id data_source_description option dependency_type cost cost_units + cost_source cost_comments

# Cross-Data Type Information and Relationships

## Shared Components Across All Three Data Types:

- Dates
- Documents - Doc ID, name, and URL
- Point of Contact (POC)
- Physical Organization Hierarchy (POH) - Both short and long name for every level
- Value Tree Hierarchy - Level type and node name for every level
- Global Change Master Directory (GCMD) Hierarchy
- Geographic Coverages and Definitions (EOR and EOS only)

GCMD_Master
<b>gcmd_master_id</b>
category
topic
term
I1_variable
I2_variable
I3_variable
detailed_variable

Geographic Coverage
<b>geographic_coverage_id</b>
geographic_coverage
definition

Person
<b>person_id</b>
first_name
last_name
preferred_name
title
email
primary_phone_number
primary_phone_extension
poh_id
date_active
date_inactive

Documentation
<b>documentation_id</b>
document_name
document_url

Physical_Organization_Hierarchy
<b>poh_id</b>
level_1_name
level_1_short_name
level_2_name
level_2_short_name
level_3_name
level_3_short_name
level_4_name
level_4_short_name
level_5_name
level_5_short_name
level_6_name
level_6_short_name
level_7_name
level_7_short_name
level_8_name
level_8_short_name

## Cross-Data Type Relationships:

### EOR to EOS:

- Can match EOR records to EOS records where the GCMD variable is the same.
- A match does not imply a direct or explicit relationship between the EOR and EOS records.
- A match means the EOR can potentially be met by the EOS or the EOS can potentially satisfy the EOR.

### EOR to VTI:

- Can link EOR records to one or more VTI hierarchy nodes (including the surveyed product level).
- Link implies a direct or explicit relationship between the EOR and selected VTI nodes.

### EOS to VTI:

- Can link EOS records to one or more VTI data sources by assigning PALMA IDs to EOS components.
- Link implies that the EOS record and the VTI data source(s) represent the same thing.

### EOR to EOS to VTI:

- Can match EOR records to EOS records and VTI surveyed product records by POH.
- Need to keep in mind the "Organization Affiliation" type associated with the EOR and EOS records.
- Matches do not imply a direct or explicit relationship between the EOR, EOS, and VTI records.