

New York State well ID: S138847

[Link to NWIS Data](#)

https://nwis.waterdata.usgs.gov/nwis/inventory/?site_no=405126072343201&agency_cd=USGS

USGS well ID: 405126072343201

[Link to GeoLog Locator](#)

<https://webapps.usgs.gov/GeoLogLocator/#/>

Well Information

Latitude: 40°51'25.9" NAD83

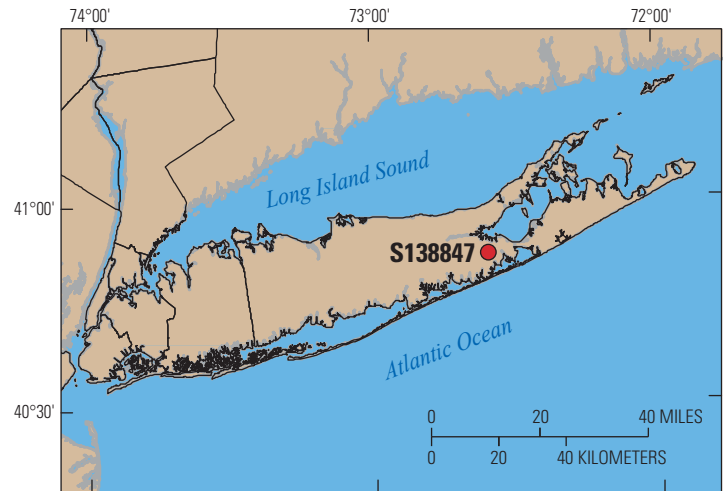
Longitude: 72°34'32.1" NAD83

Land Surface Elevation: 42 ft NAVD88

Well depth: 1,330 ft Screened Interval: 1,300 to 1,320 ft

Screened aquifer: Lloyd Aquifer

Well Completion Date: 8/14/2025



USGS Geology Log

- 40 ft: Medium brown sand, minor gravels
- 60 ft: Medium brown sand, some small to medium gravels
- 80 ft: Medium to coarse brown sand and gravel
- 100 ft: Medium brown sand, some gravel
- 120 ft: Fine to medium brown sand, minor coarse sand and gravel
- 140 ft: Fine to medium brown sand, minor coarse sand and gravel
- 160 ft: Fine brown sand, few gravels
- 180 ft: Sandy grayish brown silt, thin laminations of gray, reddish brown and black
- 200 ft: Dark gray and black silt, presence of muscovite mica
- 220 ft: Gray, dark gray and black silt, presence of muscovite mica
- 240 ft: Dark gray and black silt. silty clay and silty sand
- 260 ft: Fine to medium dark gray sand
- 280 ft: Fine to medium dark gray sand
- 300 ft: Fine to medium gray sand
- 320 ft: Fine to medium dark gray sand
- 340 ft: Stiff black varved clay
- 360 ft: Fine to medium dark gray sand with lignite and muscovite mica
- 380 ft: Fine dark gray sand, trace muscovite mica
- 400 ft: Fine gray sand with muscovite mica and thin bed of lignite
- 420 ft: Silty fine gray sand, trace muscovite mica
- 440 ft: Fine gray sand. trace lignite and muscovite mica
- 460 ft: Silty very fine gray sand

New York State well ID: S138847

Link to NWIS Data

https://nwis.waterdata.usgs.gov/nwis/inventory/?site_no=405126072343201&agency_cd=USGS

USGS well ID: 405126072343201

Link to GeoLog Locator

<https://webapps.usgs.gov/GeoLogLocator/#/>

USGS Geology Log

480 ft: Medium stiff black clay
500 ft: Fine gray sand
520 ft: Fine gray sand, trace muscovite mica
540 ft: Fine light and dark gray sand, thin bed of lignite, trace muscovite mica
560 ft: Light gray silt, trace lignite
580 ft: Fine to medium gray sand
600 ft: Silty fine light and dark gray sand and sandy silt
620 ft: Very stiff gray varved clay
640 ft: Gray silt, trace muscovite mica
660 ft: Gray silt, thin beds of lignite and trace muscovite mica
680 ft: Clayey gray silt. trace mucovite mica
700 ft: Silty fine gray sand, minor lignite and muscovite mica
720 ft: Medium light gray sand, thin laminations of lignite in middle, more light gray to white at bottom
740 ft: Silty light gray fine sand
760 ft: Silty light gray fine sand
780 ft: Fine to medium light gray sand
800 ft: Silty fine gray sand
820 ft: Silty fine to medium gray sand
840 ft: Medium light gray sand
860 ft: Medium to coarse light gray sand
880 ft: Silty fine to medium light gray sand and light gray silt
900 ft: Fine to coarse light gray/whitish sand and gravel
920 ft: Poorly sorted silty fine to coarse light gray sand
940 ft: Sandy light gray silt
960 ft: Silty very fine light gray sand
980 ft: Silty very fine light gray/white sand grading into grayish white fine sand
1000 ft: Fine grayish white sand
1020 ft: Silty fine light gray sand
1040 ft: Silty fine to medium light gray sand
1060 ft: Silty fine light gray sand
1080 ft: Silty fine to medium light gray sand
1100 ft: Silty fine to medium light gray sand
1120 ft: Clayey light gray silt
1140 ft: Stiff gray clay, streaks of reddish brown on outside of core
1160 ft: Silty fine gray sand
1180 ft: Fine to medium gray sand
1200 ft: Lignite with some black clay

New York State well ID: S138847

USGS well ID: 405126072343201

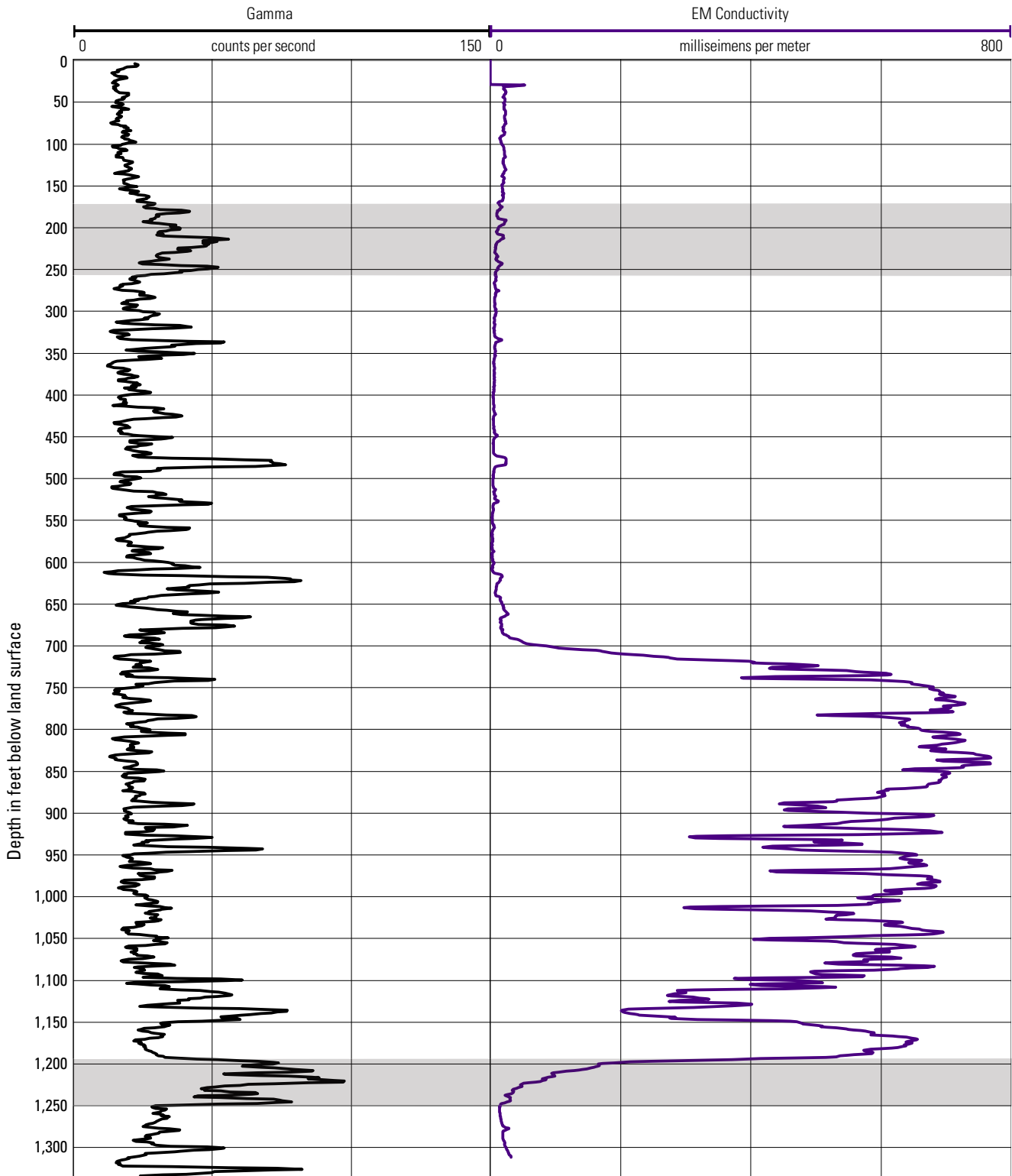
[Link to NWIS Data](#)

[Link to GeoLog Locator](#)

https://nwis.waterdata.usgs.gov/nwis/inventory/?site_no=405126072343201&agency_cd=USGS

<https://webapps.usgs.gov/GeoLogLocator/#/>

USGS Borehole Geophysical Logs



New York State well ID: S138847

Link to NWIS Data

[https://nwis.waterdata.usgs.gov/nwis/inventory/
?site_no=405126072343201&agency_cd=USGS](https://nwis.waterdata.usgs.gov/nwis/inventory/?site_no=405126072343201&agency_cd=USGS)

USGS well ID: 405126072343201

Link to GeoLog Locator

<https://webapps.usgs.gov/GeoLogLocator/#/>

USGS Geology Log

1220 ft: Stiff gray clay
1240 ft: Silty dark gray clay, clayey gray silt
1260 ft: Silty fine light gray sand
1280 ft: Silty fine light gray sand grading to fine to medium sand at bottom
1300 ft: Silty fine light gray sand, trace muscovite mica
1320 ft: Silty fine to medium light gray sand, trace muscovite mica
1340 ft: Fine to medium light gray sand, some clay