

Mineral Industry Surveys

For information, contact:

Désirée E. Polyak, Molybdenum Commodity Specialist
 National Minerals Information Center
 Telephone: (703) 648-4909
 Email: dpolyak@usgs.gov

Raymond I. Eldridge III (Data)

Telephone: (703) 648-7982

Email: reldridge@usgs.gov

Internet: <https://www.usgs.gov/centers/national-minerals-information-center/mineral-industry-surveys>

MOLYBDENUM IN OCTOBER 2022

Domestic production of molybdenum in concentrate in October 2022 was essentially unchanged compared with the output of the previous month and was unchanged compared with the output of October 2021 (fig. 1, table 1).

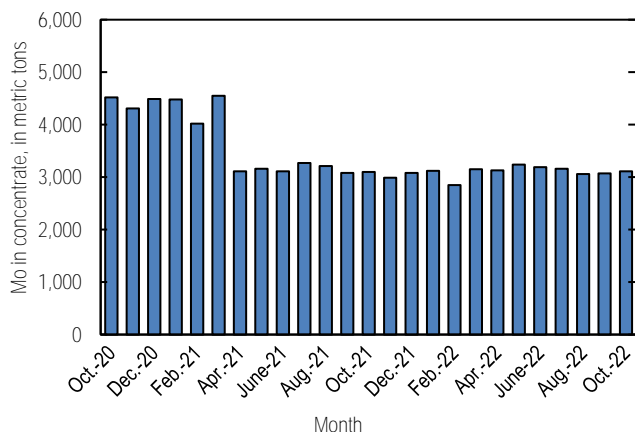


Figure 1. Monthly domestic production of molybdenum (Mo) in concentrate from October 2020 through October 2022 (may include revisions to previously published data).

Prices

According to CRU Group (2022), the monthly average price range for U.S. ferromolybdenum (FeMo) was \$20.875 to \$21.719 per pound of molybdenum content in October 2022 compared with \$18.778 to \$19.400 per pound of molybdenum content in September 2022. FeMo monthly average prices in Europe ranged from \$41.688 to \$42.688 per kilogram (\$18.909 to \$19.363 per pound) of molybdenum content in October 2022 compared with \$40.300 to \$41.300 per kilogram (\$18.280 to \$18.733 per pound) in September 2022.

U.S. molybdic oxide (MoO₃) prices ranged from \$17.000 to \$17.563 per pound of molybdenum content in October 2022 compared with \$15.778 to \$16.367 per pound of molybdenum content in September 2022 (fig. 2).

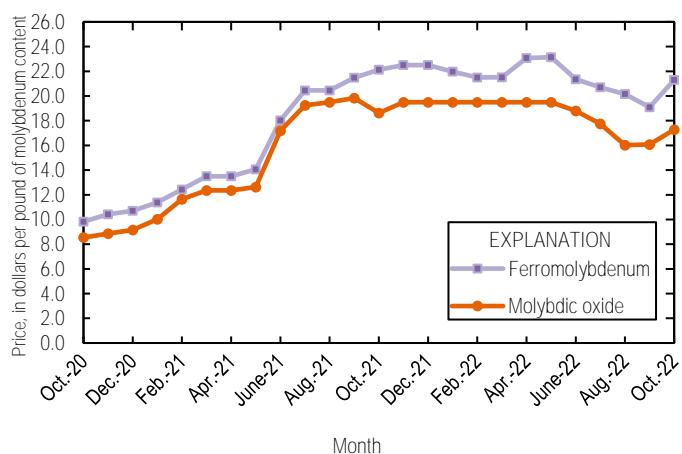


Figure 2. Average monthly prices for U.S. ferromolybdenum and molybdic oxide from October 2020 through October 2022. Source: CRU Group.

Reference Cited

CRU Group, 2022, Molybdenum prices: London, United Kingdom, CRU Group, November 30. (Accessed December 14, 2022, via <http://www.crugroup.com/>)

List services and web feed subscribers are the first to receive notification of USGS minerals information publications and data releases. For information on how to subscribe, go to <https://www.usgs.gov/centers/national-minerals-information-center/minerals-information-publication-list-services>.

TABLE 1
U.S. SALIENT MOLYBDENUM CONCENTRATE
STATISTICS^{1,2}

(Metric tons, contained molybdenum)

Period	Production	Shipments ^{3,4}
2021:		
January	4,480	4,450
February	4,020	4,010
March	4,550	4,580
April	3,110	3,120
May	3,160	3,080
June	3,110	3,140
July	3,270	3,210
August	3,210	3,290
September	3,080	3,100
October	3,100	3,060
November	2,990	2,950
December	3,080	3,090
January–December	41,100	41,100
2022:		
January	3,120	3,080
February	2,850	2,850
March	3,150	3,180
April	3,130	3,150
May	3,240	3,250
June	3,190	3,170
July	3,160	3,130
August	3,060	3,100
September	3,070	3,090
October	3,110	3,030
January–October	31,100	31,000

¹Data are rounded to no more than three significant digits; may not add to totals shown.

²Includes data from Freeport-McMoRan Inc., 2021–2022. Adjusted by USGS to reflect estimated monthly data.

³As reported by producers.

⁴Shipments include sales to domestic customers, sales for export, and transfers to other company plants.

TABLE 2
U.S. EXPORTS OF MOLYBDENUM ORES AND CONCENTRATES
(including roasted concentrate), BY COUNTRY OR LOCALITY¹

(Kilograms, contained molybdenum)

Country or locality	2021			2022		
	January– December	October	January– October	September	October	January– October
Argentina	33,200	--	--	--	--	87,000
Belgium	5,900,000	215,000	5,560,000 [†]	--	343,000	1,720,000
Brazil	136,000	2,470	124,000	17,200	36,700	155,000
Cambodia	29,900	583	21,600	--	--	5,000
Canada	782,000	108,000	764,000	46,800	18,700	352,000
Chile	1,230,000	--	1,080,000 [†]	--	--	98,400
China	1,510,000	--	1,510,000	--	65,800	84,900
Germany	--	--	--	--	--	5,700
Hong Kong	--	--	--	--	--	1,680
India	757,000	56,100	701,000 [†]	--	91,900	438,000
Japan	4,340,000	491,000	3,650,000 [†]	354,000	209,000	3,050,000
Korea, Republic of	1,480,000	48,500 [†]	1,290,000 [†]	54,900	63,800	587,000
Latvia	--	--	--	--	--	1,140
Lithuania	1,900	--	1,900	--	--	--
Mexico	3,350,000	170,000	3,110,000	190,000	157,000	1,620,000
Netherlands	27,700,000	1,620,000	23,200,000	1,680,000	1,600,000	23,000,000
South Africa	3,810	--	3,810	11,800	--	11,800
Taiwan	3,130	3,130	3,130	--	--	3,400
Thailand	--	--	--	--	--	7,060
United Kingdom	8,250,000	454,000	7,290,000	307,000	326,000	5,890,000
Vietnam	369,000	26,700	191,000 [†]	104,000	135,000	786,000
Total	55,900,000	3,200,000 [†]	48,500,000 [†]	2,760,000	3,050,000	37,900,000

[†]Revised. -- Zero.

¹Data are rounded to no more than three significant digits; may not add to totals shown.

Source: U.S. Census Bureau.

TABLE 3
U.S. EXPORTS OF FERROMOLYBDENUM, BY COUNTRY OR LOCALITY¹

(Kilograms, contained molybdenum)

Country or locality	2021		2022			
	January– December	October	January– October	September	October	January– October
Argentina	--	--	--	--	--	462
Australia	2,790	--	2,010	--	--	2,560
Canada	217,000	25,600	195,000 ^r	1,590	544	86,700
Denmark	1,350	--	914	--	--	880
Mexico	282,000	--	282,000	11,000	73	82,600
Total	504,000	25,600	480,000 ^r	12,600	617	173,000

^rRevised. -- Zero.

¹Data are rounded to no more than three significant digits; may not add to totals shown.

Source: U.S. Census Bureau.

TABLE 4
U.S. IMPORTS FOR CONSUMPTION OF MOLYBDENUM PRODUCTS¹

(Kilograms, unless otherwise specified)

Material	2021			2022					
	January–December			October			January–October		
	Gross weight	Contained molybdenum	Value ² (thousands)	Gross weight	Contained molybdenum	Value ² (thousands)	Gross weight	Contained molybdenum	Value ² (thousands)
Ore and concentrates, roasted	5,130,000	3,200,000	\$89,700	205,000	125,000	\$4,900	2,830,000	1,740,000	\$63,400
Ore and concentrates, other	25,200,000	12,300,000	362,000	2,310,000	954,000	35,300	25,300,000	12,000,000	452,000
Molybdenum chemicals:									
Oxides and hydroxides	3,770,000	NA	88,800	467,000	NA	11,900	3,210,000	NA	94,400
Molybdates of ammonium	1,610,000	907,000	32,400	120,000	67,000	2,870	1,300,000	735,000	32,000
Molybdates (all others)	182,000	72,100	2,540	70,000	27,700	1,120	268,000	107,000	4,440
Molybdenum orange	128,000	NA	1,010	24,400	NA	132	112,000	NA	850
Ferromolybdenum	12,300,000	8,390,000	280,000	959,000	644,000	24,000	9,830,000	6,740,000	289,000
Molybdenum powders	216,000	201,000	9,900	1,980	1,910	167	221,000	217,000	12,400
Molybdenum unwrought	426,000	425,000	14,700	1,820	1,800	130	230,000	230,000	9,920
Molybdenum waste and scrap	2,030,000	1,810,000	62,600	140,000	132,000	5,820	1,630,000	1,330,000	57,800
Molybdenum wire	17,900	NA	2,010	661	NA	144	12,900	NA	1,590
Molybdenum other	190,000	NA	18,900	16,400	NA	2,530	160,000	NA	20,600
Total	51,200,000	XX	964,000	4,320,000	XX	89,000	45,100,000	XX	1,040,000

NA Not available. XX Not applicable.

¹Data are rounded to no more than three significant digits; may not add to totals shown.

²Customs value.

Source: U.S. Census Bureau.