

Mineral Industry Surveys

For information, contact:

Daniel M. Flanagan, Copper Commodity Specialist
National Minerals Information Center
Telephone: (703) 648-7726
Email: dflanagan@usgs.gov

Sheema Merchant (Data)

Telephone: (703) 659-9944

Email: smerchant@usgs.gov

Internet: <https://www.usgs.gov/centers/national-minerals-information-center/mineral-industry-surveys>

COPPER IN APRIL 2023

In April 2023, mine output of recoverable copper in the United States was 98,700 metric tons (t). The average daily mine production was 3,290 t, an increase of 4% from that in March and 4% lower than that in April 2022 (fig. 1). Year-to-date mine production was 390,000 t, a decrease of 5% compared with that in the same time period in 2022 (table 2).

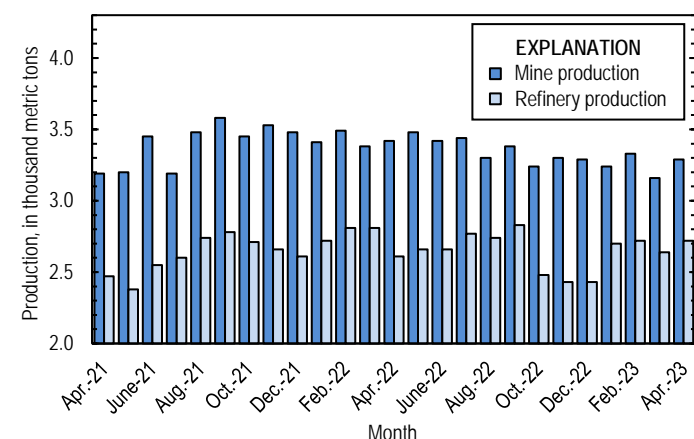


Figure 1. Average daily copper mine (recoverable) and refinery (primary and secondary) production in the United States from April 2021 through April 2023.

Smelter and electrolytic refinery production reported to the U.S. Geological Survey in April 2023 were withheld to avoid disclosing company proprietary data. Smelter and electrolytic refinery output in tables 3 and 4 are estimates based on data in company reports and other public information.

Estimated domestic smelter production was 40,000 t in April 2023. Year-to-date estimated smelter output was 160,000 t, an increase of 19% from that in the same time period in 2022. The smelter production estimates reported in table 3 represent primary production only in 2022 and primary and secondary output in 2023. A secondary copper smelter in Shelby, NC, with a monthly production capacity of roughly 4,200 t of anodes began operating in late 2022 (Toto, 2023).

Total U.S. refinery production in April 2023 was 81,600 t; data for electrolytic and electrowon output, as well as refined production from scrap, are reported in table 4. The average daily refinery production was 2,720 t, 3% greater than that in March

and 4% higher than that in April 2022 (fig. 1). Year-to-date refinery output through April 2023 was 323,000 t, essentially unchanged relative to the same time period in 2022.

Prices

In April 2023, the average Commodity Exchange Inc. (COMEX) copper price was \$4.00 per pound, essentially unchanged compared with \$4.05 per pound in March and 14% less than \$4.64 per pound in April 2022 (fig. 2, table 11). The average U.S. dealers buying price of number 2 copper scrap was \$3.17 per pound in April 2023, essentially unchanged from \$3.19 per pound in March and a decrease of 11% from \$3.55 per pound in April 2022 (fig. 2, table 12).

Stocks

Refined copper stocks in the United States totaled 76,800 t at the end of April 2023, 10% greater than those in March and a decrease of 42% compared with those in April 2022. Total domestic stocks at producers and fabricators (brass mills, refineries, wire-rod mills, and other manufacturers) declined by 1,820 t (3%) and total stocks at exchanges (COMEX and London Metal Exchange Ltd.) increased by 8,610 t (51%) from those at the end of March (fig. 3, table 10).

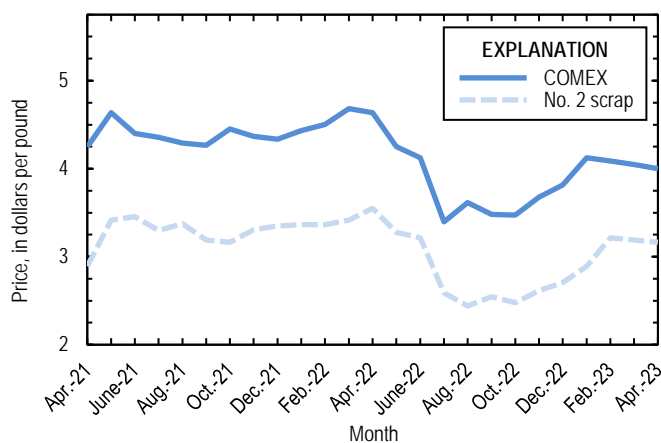


Figure 2. Monthly average Commodity Exchange Inc. (COMEX) copper price and no. 2 copper scrap U.S. dealers buying price from April 2021 through April 2023. Sources: Fastmarkets-AMM and S&P Global Platts Metals Week.

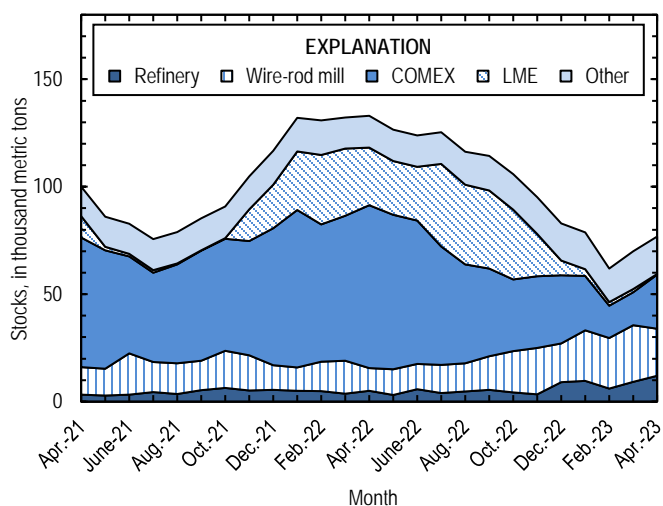


Figure 3. Domestic refined copper stocks at end of month, by type, from April 2021 through April 2023. Sources: London Metal Exchange Ltd., S&P Global Platts Metals Week, and U.S. Geological Survey.

Reference Cited

Toto, Deanne, 2023, ISRI2023—Critical copper: Recycling Today, April 22. (Accessed April 23, 2023, at <https://www.recyclingtoday.com/news/isri-2023-spotlight-on-copper-critical-metal/>.)

List services and web feed subscribers are the first to receive notification of USGS minerals information publications and data releases. For information on how to subscribe, go to <https://www.usgs.gov/centers/national-minerals-information-center/minerals-information-publication-list-services>.

TABLE 1
SALIENT STATISTICS OF THE COPPER INDUSTRY IN THE UNITED STATES¹

(Metric tons, copper content, unless otherwise specified)

	Source table ²	2022 ^p	2023			
			February	March	April	January– April
Production:						
Primary (from ore):						
Mine, recoverable ³	(2)	1,230,000	93,100	97,900 ^r	98,700	390,000
Smelter ^{c, 4}	(3)	375,000	40,000	40,000	40,000	160,000
Refinery:						
Electrolytic ^c	(4)	375,000	35,000 ^r	35,000 ^r	35,000	140,000
Electrowon	(4)	556,000	37,800	43,500 ^r	43,400	170,000
Total	(4)	931,000	72,800 ^r	78,500 ^r	78,400	310,000
Secondary (from copper-base scrap): ⁵						
Refineries ⁶	(5)	40,000	3,230	3,220	3,220	12,900
Ingot makers ^{c, 7}	(5)	39,500	3,290	3,290	3,290	13,200
Brass and wire-rod mills	(5)	650,000	55,700	56,300	55,300	225,000
Foundries, etc. ^{c, 7}	(5)	40,000	3,330	3,330	3,330	13,300
Consumption:						
Reported, refined copper	(7)	1,720,000	131,000	139,000	133,000	531,000
Apparent, primary refined copper and copper from old scrap ⁸	(8)	1,820,000	149,000 ^r	207,000 ^r	180,000	671,000
Reported, purchased copper-base scrap (gross weight)	(9)	890,000	75,500	76,100	75,100	304,000
Stocks at end of period:						
Blister and anodes	(10)	13,300	13,000	14,300	35,100	35,100
Refined ⁹	(10)	82,800	61,900	70,000	76,800	76,800
Price, U.S. producers cathode (cents per pound) ¹⁰	(11)	410.775	418.824	414.915	410.037	416.752
Imports for consumption: ¹¹						
Ore and concentrates	(13)	11,700	1,740	1,500	--	3,240
Refined	(13)	732,000 ^r	48,700	126,000	97,900	311,000
Exports: ¹¹						
Ore and concentrates	(14)	353,000 ^r	32,600	37,600	33,300	135,000
Refined	(14)	27,600 ^r	2,000	1,290	2,020	6,490

^cEstimated. ^pPreliminary. ^rRevised. -- Zero,

¹Data are rounded to no more than three significant digits, except prices; may not add to totals shown.

²Numbers in parentheses refer to the tables where these data are located.

³Includes the recoverable copper content of concentrates (of copper and other metals), copper produced by solvent extraction and electrowinning, and copper recovered as precipitates.

⁴Contains small quantities of copper from scrap.

⁵Copper recovered from copper-base scrap and converted to refined metal, alloys, and other forms. Does not include copper recovered from scrap other than copper-base.

⁶Electrolytically refined and fire-refined copper.

⁷Plants are surveyed by the U.S. Geological Survey on an annual basis; data after 2021 not yet available. Monthly data are estimated based on the monthly average of 2021 annual data.

⁸Primary refined copper production plus copper recovered from old scrap (of copper-base and non-copper-base) plus refined imports for consumption minus refined exports, including adjustments for refined stock changes. Old scrap consists of copper items used by consumers.

⁹Stocks of refined copper at brass mills, exchanges, refineries, wire-rod mills, and other manufacturers.

¹⁰Source: S&P Global Platts Metals Week. Sum of the monthly average Commodity Exchange Inc. (COMEX) price and monthly average New York dealers cathode premium; reflects the delivered spot price of copper cathode to U.S. consumers by U.S. producers.

¹¹Source: U.S. Census Bureau. See tables 13 and 14 for the relevant Harmonized Tariff Schedule (imports) and Schedule B (exports) codes.

TABLE 2
MINE PRODUCTION OF COPPER IN THE UNITED STATES¹

(Metric tons)

Period	Recoverable copper ²			Contained copper		
	Arizona	Others ³	Total	Electrowon	Concentrates ⁴	Total
2022: ^p						
January–April	283,000	128,000	411,000	179,000	241,000	420,000
April	72,200	30,400	103,000	44,900	59,900	105,000
May	77,900	29,800	108,000	49,100	60,900	110,000
June	73,900	28,600	103,000	46,500	58,200	105,000
July	73,300	33,500	107,000	47,600	61,400	109,000
August	69,600	32,600	102,000	46,800	57,500	104,000
September	69,700	31,500	101,000	46,800	56,500	103,000
October	69,200	31,200	100,000	48,600	53,800	102,000
November	66,800	32,300	99,100	44,600	56,500	101,000
December	71,400	30,700	102,000	47,000	57,100	104,000
January–December	855,000	378,000	1,230,000	556,000	702,000	1,260,000
2023:						
January	69,400	31,000	100,000	45,600	56,800	102,000
February	63,900	29,200	93,100	37,800	57,400	95,300
March	67,600 ^r	30,300	97,900 ^r	43,500 ^r	56,500	100,000 ^r
April	67,700	30,900	98,700	43,400	57,500	101,000
January–April	269,000	121,000	390,000	170,000	228,000	399,000

^pPreliminary. ^rRevised.

¹Data are rounded to no more than three significant digits; may not add to totals shown.

²Includes the recoverable copper content of concentrates (of copper and other metals), copper produced by solvent extraction and electrowinning, and copper recovered as precipitates.

³Includes production from Michigan, Missouri, Montana, Nevada, New Mexico, and Utah.

⁴Also includes copper recovered as precipitates.

TABLE 3
COPPER PRODUCED AT SMELTERS IN
THE UNITED STATES^{1, 2}

(Metric tons, copper content)

Period	Anode production ^{e, 3}
2022: ^p	
January–April	135,000
April	30,000
May	30,000
June	30,000
July	35,000
August	35,000
September	35,000
October	25,000
November	25,000
December	25,000
January–December	375,000
2023:	
January	40,000
February	40,000
March	40,000
April	40,000
January–April	160,000

^eEstimated. ^pPreliminary.

¹Data are rounded to no more than three significant digits; may not add to totals shown.

²Data reflect primary production in 2022 and primary and secondary production in 2023.

³To avoid disclosing company proprietary data, anode production data are estimated based on public information and do not reflect output reported to the U.S. Geological Survey.

TABLE 4
U.S. PRODUCTION OF REFINED COPPER¹

(Metric tons)

Period	From primary materials			From scrap ³	Total refined
	Electrolytic ^{e,2}	Electrowon	Total primary		
2022: ^p					
January–April	135,000	179,000	314,000	14,000	328,000
April	30,000	44,900	74,900	3,250	78,200
May	30,000	49,100	79,100	3,220	82,300
June	30,000	46,500	76,500	3,370	79,900
July	35,000	47,600	82,600	3,250	85,800
August	35,000	46,800	81,800	3,260	85,000
September	35,000	46,800	81,800	3,220	85,000
October	25,000	48,600	73,600	3,220	76,800
November	25,000	44,600	69,600	3,280	72,900
December	25,000	47,000	72,000	3,240	75,300
January–December	375,000	556,000	931,000	40,000	971,000
2023:					
January	35,000 ^r	45,600	80,600 ^r	3,220	83,800 ^r
February	35,000 ^r	37,800	72,800 ^r	3,230	76,100 ^r
March	35,000 ^r	43,500 ^r	78,500 ^r	3,220	81,700 ^r
April	35,000	43,400	78,400	3,220	81,600
January–April	140,000	170,000	310,000	12,900	323,000

^eEstimated. ^pPreliminary. ^rRevised.

¹Data are rounded to no more than three significant digits; may not add to totals shown.

²To avoid disclosing company proprietary data, electrolytic production data are estimated based on public information and do not reflect output reported to the U.S. Geological Survey.

³Electrolytically refined and fire-refined copper.

TABLE 5
COPPER RECOVERED AS REFINED COPPER AND IN ALLOYS AND OTHER FORMS FROM PURCHASED
COPPER-BASE SCRAP IN THE UNITED STATES^{1, 2}

(Metric tons)

Period	Refineries ³		Ingot makers ^{e, 4}		Brass and wire-rod mills		Foundries, etc. ^{e, 4}		Total ⁵
	New scrap ^e	Old scrap	New scrap	Old scrap	New scrap	Old scrap	New scrap	Old scrap	
2022: ^p									
January–April	6,710	7,300	1,400	11,800	201,000	15,700	2,960	10,400	257,000
April	1,680	1,570	350	2,940	49,900	3,750	740	2,590	63,500
May	1,680	1,540	350	2,940	49,800	3,640	740	2,590	63,200
June	1,680	1,690	350	2,940	49,800	3,710	740	2,590	63,500
July	1,680	1,570	350	2,940	50,700	3,110	740	2,590	63,700
August	1,680	1,580	350	2,940	51,400	3,330	740	2,590	64,600
September	1,680	1,540	350	2,940	50,800	3,340	740	2,590	64,000
October	1,680	1,540	350	2,940	51,100	3,230	740	2,590	64,200
November	1,680	1,600	350	2,940	51,800	3,270	740	2,590	65,000
December	1,680	1,560	350	2,940	51,800	2,600	740	2,590	64,200
January–December	20,100	19,900	4,200	35,300	608,000	41,900	8,880	31,100	769,000
2023:									
January	1,680	1,540	350	2,940	53,600	4,360	740	2,590	67,800
February	1,680	1,550	350	2,940	52,300	3,360	740	2,590	65,500
March	1,680	1,540	350	2,940	52,700	3,620	740	2,590	66,200
April	1,680	1,540	350	2,940	52,000	3,300	740	2,590	65,100
January–April	6,710	6,180	1,400	11,800	211,000	14,600	2,960	10,400	265,000

^eEstimated. ^pPreliminary.

¹Data are rounded to no more than three significant digits; may not add to totals shown.

²New scrap refers to material generated during the manufacturing process. Old scrap consists of copper items used by consumers.

³Electrolytically refined and fire refined from scrap based on source of material at smelter or refinery level.

⁴Plants are surveyed by the U.S. Geological Survey on an annual basis; data after 2021 not yet available. Monthly data are estimated based on the monthly average of 2021 annual data.

⁵Does not include an estimate, based on 2021 annual data, of 2,970 tons per month from new scrap and 1,700 tons per month from old scrap of copper recovered from scrap other than copper-base.

TABLE 6
U.S. PRODUCTION, SHIPMENTS, AND STOCKS OF BRASS AND WIRE-ROD SEMIFABRICATES¹

(Metric tons, gross weight)

Period	Production		Shipments		Stocks, end of period	
	Brass mills	Wire-rod mills	Brass mills	Wire-rod mills	Brass mills	Wire-rod mills
2022: ^P						
January–April	304,000	456,000	303,000	449,000	29,500	26,200
April	76,300	117,000	76,100	112,000	29,500	26,200
May	74,200	112,000	74,300	116,000	29,400	21,900
June	74,800	111,000	74,900	115,000	29,300	17,200
July	74,600	117,000	74,800	114,000	29,100	21,000
August	75,300	112,000	75,200	115,000	29,200	17,900
September	79,900	116,000	79,400	119,000	29,800	15,600
October	75,400	115,000	75,100	114,000	30,000	16,600
November	74,900	94,800	74,800	94,700	30,200	16,600
December	74,800	90,300	74,300	88,400	30,700	18,600
January–December	908,000	1,330,000	906,000	1,330,000	30,700	18,600
2023:						
January	76,400	99,100	75,400	102,000	31,700	15,600
February	75,300	100,000	74,500	104,000	32,500	12,300
March	77,000	105,000	75,000	107,000	34,500	10,500
April	73,500	98,800	74,700	93,100	33,400	16,200
January–April	302,000	404,000	300,000	406,000	33,400	16,200

^PPreliminary.

¹Data are rounded to no more than three significant digits; may not add to totals shown.

TABLE 7
U.S. CONSUMPTION OF REFINED COPPER¹

(Metric tons)

Period	Brass mills	Wire-rod mills	Other plants ^{6, 2}	Total
2022: ^p				
January–April	141,000	439,000	14,300	594,000
April	34,600	113,000	3,590	152,000
May	34,900	109,000	3,590	147,000
June	34,800	107,000	3,590	146,000
July	34,900	112,000	3,590	151,000
August	35,000	106,000	3,590	145,000
September	34,900	101,000	3,590	140,000
October	35,000	105,000	3,590	144,000
November	35,000	83,700	3,590	122,000
December	35,200	88,700	3,590	127,000
January–December	420,000	1,250,000	43,000	1,720,000
2023:				
January	34,700	89,600	3,590	128,000
February	36,200	91,100	3,590	131,000
March	34,100	101,000	3,590	139,000
April	35,800	93,400	3,590	133,000
January–April	141,000	375,000	14,300	531,000

⁶Estimated. ^pPreliminary.

¹Data are rounded to no more than three significant digits; may not add to totals shown.

²Chemical plants, foundries, ingot makers, and miscellaneous manufacturers. These plants are surveyed by the U.S. Geological Survey on an annual basis; data after 2021 not yet available. Monthly data are estimated based on the monthly average of 2021 annual data.

TABLE 8
U.S. APPARENT CONSUMPTION OF COPPER¹

(Metric tons)

Period	Primary refined copper production	Copper in old scrap ²	Refined imports for consumption ³	Refined exports ³	Refined stock change during period	Apparent consumption ⁴
2022: ^p						
January–April	314,000	51,900	287,000 ^r	10,900 ^r	16,300	626,000 ^r
April	74,900	12,500	64,800	2,820	794	149,000
May	79,100	12,400	74,300	2,890	-6,470	169,000
June	76,500	12,600	75,900	1,720	-2,560	166,000
July	82,600	11,900	80,900	1,900	1,560	172,000
August	81,800	12,100	36,400	3,060	-9,190	136,000
September	81,800	12,100	50,700	2,470	-1,970	144,000
October	73,600	12,000	49,700	1,190	-8,330	142,000
November	69,600	12,100	37,900	1,430	-10,800	129,000
December	72,000	11,400	38,800	2,100	-12,300	132,000
January–December	931,000	149,000	732,000 ^r	27,600 ^r	-33,800	1,820,000
2023:						
January	80,600 ^r	13,100	39,000	1,190	-4,040	136,000 ^r
February	72,800 ^r	12,100	48,700	2,000	-16,800	149,000 ^r
March	78,500 ^r	12,400	126,000	1,290	8,090	207,000 ^r
April	78,400	12,100	97,900	2,020	6,790	180,000
January–April	310,000	49,700	311,000	6,490	-5,980	671,000

^pPreliminary. ^rRevised.

¹Data are rounded to no more than three significant digits; may not add to totals shown.

²Copper recovered from old scrap (of copper-base and non-copper-base) and converted to refined metal, alloys, and other forms. Includes reported monthly production and estimates for annual reporters based on the monthly average of 2021 annual data. Old scrap consists of copper items used by consumers.

³Source: U.S. Census Bureau. Includes Harmonized Tariff Schedule (imports) and Schedule B (exports) codes 7403.11.0000, 7403.12.0000, 7403.13.0000, and 7403.19.0000.

⁴Primary refined copper production plus copper in old scrap plus refined imports for consumption minus refined exports minus refined stock change during period.

TABLE 9
U.S. CONSUMPTION OF PURCHASED COPPER-BASE SCRAP^{1, 2}

(Metric tons, gross weight)

Period	Smelters and refineries		Ingot makers ^{e, 3}		Brass and wire-rod mills ⁴		Foundries, etc. ^{e, 3}		Total
	New scrap ^e	Old scrap	New scrap	Old scrap	New scrap	Old scrap	New scrap	Old scrap	
2022: ^P									
January–April	6,920	7,520	3,730	13,800	233,000	16,600	3,480	12,200	297,000
April	1,730	1,620	933	3,450	58,100	3,980	871	3,040	73,700
May	1,730	1,590	933	3,450	57,800	3,810	871	3,040	73,200
June	1,730	1,740	933	3,450	57,900	3,880	871	3,040	73,500
July	1,730	1,620	933	3,450	58,800	3,220	871	3,040	73,600
August	1,730	1,630	933	3,450	59,500	3,490	871	3,040	74,700
September	1,730	1,590	933	3,450	58,900	3,510	871	3,040	74,000
October	1,730	1,590	933	3,450	59,100	3,340	871	3,040	74,100
November	1,730	1,650	933	3,450	59,800	3,420	871	3,040	74,900
December	1,730	1,610	933	3,450	59,900	2,710	871	3,040	74,200
January–December	20,700	20,500	11,200	41,400	705,000	43,900	10,500	36,500	890,000
2023:									
January	1,730	1,590	933	3,450	61,700	4,500	871	3,040	77,800
February	1,730	1,600	933	3,450	60,400	3,500	871	3,040	75,500
March	1,730	1,590	933	3,450	60,800	3,740	871	3,040	76,100
April	1,730	1,590	933	3,450	60,000	3,430	871	3,040	75,100
January–April	6,920	6,370	3,730	13,800	243,000	15,200	3,480	12,200	304,000

^eEstimated. ^PPreliminary.

¹Data are rounded to no more than three significant digits; may not add to totals shown.

²New scrap refers to material generated during the manufacturing process. Old scrap consists of copper items used by consumers.

³Plants are surveyed by the U.S. Geological Survey on an annual basis; data after 2021 not yet available. Monthly data are estimated based on the monthly average of 2021 annual data.

⁴Consumption at brass and wire-rod mills assumed equal to receipts.

TABLE 10
COPPER STOCKS IN THE UNITED STATES AT END OF PERIOD¹

(Metric tons, copper content)

Period	Blister and anodes	Refined copper						Total refined
		Refineries	Wire-rod mills	Brass mills	Other ^{e, 2}	COMEX ³	LME ⁴	
2022: ^p								
April	16,100	4,990	10,600	8,620	6,200	75,800	26,800	133,000
May	11,500	3,090	12,000	8,330	6,200	71,800	25,100	126,000
June	13,100	5,800	11,700	8,330	6,200	66,700	25,100	124,000
July	12,900	3,980	13,100	8,640	6,200	55,100	38,400	125,000
August	14,200	4,790	13,100	9,010	6,200	46,000	37,100	116,000
September	14,900	5,570	15,500	9,840	6,200	40,800	36,400	114,000
October	18,500	4,300	19,200	10,400	6,200	33,400	32,400	106,000
November	14,600	3,470	21,500	10,800	6,200	33,400	19,700	95,100
December	13,300	9,100	18,000	11,000	6,200	31,700	6,850	82,800
2023:								
January	13,600	9,640	23,500	10,900	6,200	25,400	3,050	78,700
February	13,000	6,040	23,600	9,380	6,200	15,000	1,680	61,900
March	14,300	9,160	26,400	11,400	6,200	15,400	1,400	70,000
April	35,100	12,000	22,000	11,200	6,200	25,100	300	76,800

^eEstimated. ^pPreliminary.

¹Data are rounded to no more than three significant digits; may not add to totals shown.

²Chemical plants, foundries, ingot makers, and miscellaneous manufacturers. These plants are surveyed by the U.S. Geological Survey on an annual basis; data after 2021 not yet available. Monthly data are estimated based on yearend 2021 stocks.

³Commodity Exchange Inc.

⁴London Metal Exchange Ltd., U.S. warehouses.

TABLE 11
AVERAGE PRICES FOR REFINED COPPER IN THE UNITED STATES
AND ON THE LONDON METAL EXCHANGE

(Cents per pound)

Period	COMEX		
	first position ¹	U.S. producers cathode ²	LME grade A cash ³
2022:			
April	463.763	473.388	461.863
May	424.929	434.929	424.657
June	412.540	422.540	409.684
July	339.610	350.610	341.513
August	361.500	372.500	361.070
September	348.021	359.021	350.800
October	347.386	358.386	345.649
November	367.683	378.483	364.184
December	381.645	391.895	379.511
Year	400.719	410.775	399.791
2023:			
January	412.233	423.233	408.200
February	408.824	418.824	406.165
March	404.915	414.915	400.734
April	400.037	410.037	399.767
January–April	406.502	416.752	403.717

¹Listed as “COMEX high grade first position.” COMEX refers to the Commodity Exchange Inc.

²Sum of “COMEX high grade first position” and “NY dealer premium cathode.” Reflects the delivered spot price of copper cathode to U.S. consumers by U.S. producers.

³LME refers to the London Metal Exchange Ltd.

Source: S&P Global Platts Metals Week.

TABLE 12
AVERAGE BUYING PRICES FOR COPPER SCRAP IN THE UNITED STATES

(Cents per pound)

Period	Brass mills no. 1 scrap	Refiners no. 2 scrap	Dealers	
			No. 2 scrap	Red brass turnings and borings
2022:				
April	454.35	418.85	355.00	211.50
May	414.90	379.40	327.50	196.50
June	401.81	366.31	321.50	185.00
July	329.10	295.60	259.00	172.50
August	350.65	322.65	244.00	153.00
September	335.52	307.81	254.50	148.00
October	333.62	308.71	247.50	148.00
November	356.15	332.15	261.50	150.50
December	371.67	348.57	270.50	155.50
Year	390.04	358.05	296.29	183.13
2023:				
January	401.30	379.30	289.00	159.00
February	397.03	374.29	321.50	159.00
March	392.67	369.41	319.00	156.50
April	389.50	365.84	316.50	158.00
January–April	395.13	372.21	311.50	158.13

Source: Fastmarkets-AMM.

TABLE 13
U.S. IMPORTS FOR CONSUMPTION OF UNMANUFACTURED COPPER¹

(Metric tons, copper content)

Country or locality	Ore and concentrates ²			Matte, ash, and precipitates ³			Blister and anodes ⁴			Refined ⁵		
	2023			2023			2023			2023		
	2022	April	January– April	2022	April	January– April	2022	April	January– April	2022	April	January– April
Austria	--	--	--	--	--	--	--	--	--	54	--	--
Belgium	--	--	--	384	175	175	--	--	--	2	--	--
Canada	11,700	--	3,240	581	47	124	(6)	(6)	(6)	118,000	9,810	41,000
Chile	--	--	--	--	--	--	--	--	--	472,000 ^r	72,600	226,000
China	--	--	--	--	--	--	(6)	--	(6)	897	85	209
Congo (Kinshasa)	--	--	--	--	--	--	--	--	--	8,910	956	6,320
Finland	--	--	--	--	--	--	281	--	78	39	--	--
France	--	--	--	--	--	--	15	--	--	53	10	29
Germany	(6)	--	--	94	--	--	(6)	--	(6)	3,410	509	1,210
Hungary	9	--	--	--	--	--	--	--	--	--	--	--
India	11	--	--	--	--	(6)	--	--	(6)	57	--	--
Japan	(6)	--	--	--	--	--	(6)	--	--	1,370 ^r	282	847
Korea, Republic of	--	--	--	--	--	--	1	(6)	(6)	10	--	13
Mexico	--	--	--	25	(6)	4	(6)	--	--	75,500	456	7,190
Peru	--	--	--	--	--	--	--	--	--	50,100	13,200	28,200
Qatar	--	--	--	43	--	--	--	--	--	--	--	--
Slovakia	--	--	--	14	--	--	--	--	--	--	--	--
Spain	--	--	--	51	--	151	(6)	--	--	--	--	--
United Kingdom	(6)	--	--	(6)	--	--	5	(6)	1	138	--	--
Zambia	--	--	--	--	--	--	--	--	--	1,230	--	--
Other	(6)	--	--	1	--	--	4	(6)	(6)	11	2	8
Total	11,700	--	3,240	1,190	222	454	306	(6)	79	732,000 ^r	97,900	311,000

^rRevised. -- Zero.

¹Data are rounded to no more than three significant digits; may not add to totals shown.

²Harmonized Tariff Schedule of the United States (HTS) code 2603.00.0010. Includes copper ore and concentrates only; excludes copper contained in ore and concentrates of other metals.

³HTS codes 2620.30.0010 and 7401.00.0000. Includes copper matte, ash, and precipitates only; excludes the copper content of mattes and ashes of other metals.

⁴HTS code 7402.00.0000.

⁵HTS codes 7403.11.0000, 7403.12.0000, 7403.13.0000, and 7403.19.0000.

⁶Less than ½ unit.

Source: U.S. Census Bureau.

TABLE 14
U.S. EXPORTS OF UNMANUFACTURED COPPER¹

(Metric tons, copper content)

Country or locality	Ore and concentrates ²			Matte, ash, and precipitates ³			Blister and anodes ⁴			Refined ⁵		
	2023			2023			2023			2023		
	2022	April	January– April	2022	April	January– April	2022	April	January– April	2022	April	January– April
Belgium	70	--	--	5,950	804	2,240	211	11	72	--	--	6
Bulgaria	1,540	--	--	--	--	--	--	--	--	--	--	--
Canada	39,800	3,570	14,000	13,500 ^r	274	1,410	6,740	2,660	8,800	14,200	386	1,820
China	56,900	6,850	21,100	378	47	283	60	20	61	2,150 ^r	(6)	91
Costa Rica	--	--	--	345	--	4	--	--	--	(6)	--	3
Germany	1,590 ^r	--	--	235	--	45	244	--	20	1	5	24
India	--	--	9	16	2	21	1,560	--	76	34	--	37
Israel	--	--	--	--	--	--	115	--	10	98	1	10
Italy	--	--	--	--	--	--	155	20	52	10	2	2
Japan	11,000	--	4,260	361	--	20	20	--	30	23	(6)	(6)
Korea, Republic of	59	--	--	189	--	9	1,570	137	473	133	2	9
Madagascar	1,220	--	--	--	--	--	--	--	--	--	--	--
Malaysia	186	1	26	147	19	45	168	182	403	51	22	245
Mexico	232,000	20,000	89,200	30	161	1,040	260	4	91	7,680	1,490	3,540
Netherlands	--	--	--	40 ^r	29	29	4	--	--	1,070	--	--
Philippines	7,770	--	--	(6)	--	--	67	4	7	35	--	--
Poland	--	--	--	270	79	424	--	--	--	--	--	--
Singapore	--	--	--	414	--	35	40	1	1	22	--	2
Slovakia	--	--	--	1,210	35	158	--	--	--	--	--	--
Spain	26 ^r	--	--	1,510	153	758	42	--	--	376	19	178
Taiwan	--	2,880	2,880	86	--	--	137	25	25	25	--	2
Thailand	-- ^r	--	--	158	--	13	94	--	--	--	--	--
Turkey	--	--	--	233	40	60	20	--	20	20	--	--
United Kingdom	--	--	--	4	4	4	40	--	6	1,630	--	1
Other	718	67	3,540	194	54	135	378	65	97	57	93	519
Total	353,000 ^r	33,300	135,000	25,200 ^r	1,700	6,730	11,900	3,130	10,200	27,600 ^r	2,020	6,490

^rRevised. -- Zero.

¹Data are rounded to no more than three significant digits; may not add to totals shown.

²Schedule B of the United States code 2603.00.0010. Includes copper ore and concentrates only; excludes copper contained in ore and concentrates of other metals.

³Schedule B codes 2620.30.0000, 7401.00.0010, and 7401.00.0050. Includes copper matte, ash, and precipitates only; excludes the copper content of mattes and ashes of other metals.

⁴Schedule B code 7402.00.0000.

⁵Schedule B codes 7403.11.0000, 7403.12.0000, 7403.13.0000, and 7403.19.0000.

⁶Less than ½ unit.

Source: U.S. Census Bureau.

TABLE 15
U.S. IMPORTS FOR CONSUMPTION OF COPPER SCRAP¹

(Metric tons, gross weight)

Country or locality	Unalloyed ²			Alloyed ³		
	2023			2023		
	2022	April	January– April	2022	April	January– April
Antigua and Barbuda	--	--	--	188	14	39
Bahamas, The	--	--	--	612	45	210
Barbados	--	--	--	326	2	33
Bermuda	12	--	13	90	10	19
Bolivia	46	--	--	106 ^r	--	--
Brazil	14	--	--	69	112	209
Canada	17,600	1,400	5,420	41,800	3,360	11,900
Cayman Islands	--	--	--	243	3	45
Colombia	196	19	59	106	40	44
Costa Rica	712	84	208	1,350	39	332
Dominican Republic	1,350	72	508	2,090	114	421
Ecuador	24	--	--	57	19	19
El Salvador	--	--	--	1,090	79	288
Germany	260	27	150	50	--	--
Grenada	--	--	--	72	17	44
Guatemala	--	--	--	309	--	58
Haiti	--	--	--	104	16	61
Honduras	24	2	6	787	78	313
Jamaica	7	--	--	461	25	133
Mexico	12,200	1,070	4,610	42,900	3,060	13,800
Nicaragua	--	--	--	194	--	18
Panama	1,190	51	277	405	26	114
Peru	--	--	--	225	--	--
Saudi Arabia	--	--	--	134	--	--
Sint Maarten	1	--	--	54	13	48
Saint Lucia	25	--	--	269	13	76
Saint Vincent and the Grenadines	--	--	--	91	10	43
Suriname	360	22	72	69	--	15
Uruguay	73 ^r	--	--	20 ^r	--	--
Vietnam	62	--	--	50	--	--
Other	75	8	52	401	27	84
Total	34,200	2,750	11,400	94,700	7,120	28,400

¹Revised. -- Zero.

¹Data are rounded to no more than three significant digits; may not add to totals shown.

²Harmonized Tariff Schedule of the United States (HTS) codes 7404.00.3020 and 7404.00.6020.

³HTS codes 7404.00.3045, 7404.00.3055, 7404.00.3065, 7404.00.3090, 7404.00.6045, 7404.00.6055, 7404.00.6065, and 7404.00.6090.

Source: U.S. Census Bureau.

TABLE 16
U.S. EXPORTS OF COPPER SCRAP¹

(Metric tons, gross weight)

Country or locality	Unalloyed ²							Alloyed ³				
	2023							2023				
	No. 1		No. 2		Other			Segregated		Unsegregated		
	January–		January–		January–			January–		January–		
	2022	April	April	April	April	April	April	2022	April	April	April	April
Austria	1,300	19	72	40	117	--	--	1,210	--	278	--	162
Belgium	33,200 ^r	1,010	3,710	978	3,720	468	2,060	8,860 ^r	132	303	425	2,110
Canada	60,900	--	--	--	--	6,120	23,700	46,200 ^r	--	--	1,910	10,200
China	260,000 ^r	5,160	24,600	2,940	17,800	11,400	40,100	31,900 ^r	1,910	6,930	1,860	5,340
Germany	15,400 ^r	812	4,150	38	252	650	1,720	15,300 ^r	64	197	616	3,400
Greece	8,830 ^r	384	1,180	--	--	160	458	2,170	16	37	119	897
Hong Kong	16,800 ^r	88	178	498	2,000	423	1,350	3,760 ^r	--	80	228	889
India	19,900 ^r	719	2,640	199	505	786	2,590	65,700 ^r	932	4,640	2,840	11,500
Japan	25,400	406	1,480	1,040	4,110	375	736	6,980 ^r	93	332	471	2,380
Korea, Republic of	42,200 ^r	726	3,710	143	1,990	715	3,540	11,400 ^r	428	1,360	165	1,120
Malaysia	24,700 ^r	1,020	4,350	280	1,200	1,120	3,380	41,700	524	2,420	2,470	9,550
Mexico	3,120	153	782	--	1	--	43	8,380	--	106	31	915
Netherlands	7,600 ^r	432	640	--	41	100	645	1,540	--	--	60	157
Pakistan	1,020 ^r	45	85	--	5	41	41	26,300	--	80	4,120	8,220
Philippines	1,660 ^r	10	199	--	--	82	158	757 ^r	7	43	60	297
Poland	15,700	216	1,070	--	20	1,000	4,290	1,030	--	20	--	249
Singapore	1,210	--	539	--	20	--	--	264	--	--	65	128
Slovakia	1,550 ^r	127	406	--	--	--	--	2,500	196	408	183	276
Spain	3,860 ^r	--	177	1	1	102	606	7,380	100	461	336	1,570
Sweden	581	30	30	--	--	--	--	1,940	--	--	27	169
Taiwan	13,100	171	413	153	1,060	292	1,280	4,440 ^r	77	96	407	1,460
Thailand	23,900	507	2,200	155	214	1,760	6,060	39,600 ^r	266	1,320	1,450	9,000
Turkey	1,020 ^r	--	300	--	--	--	--	2,320	--	--	180	180
United Arab Emirates	766	194	262	--	--	--	--	5,790 ^r	--	--	309	2,630
Vietnam	139 ^r	171	328	--	62	80	80	929	--	--	83	183
Other	2,180 ^r	57	248	20	78	9	207	2,400 ^r	30	50	58	769
Total	586,000 ^r	12,400	53,700	6,480	33,200	25,700	93,000	341,000 ^r	4,770	19,100	18,500	73,700

^rRevised. -- Zero.

¹Data are rounded to no more than three significant digits; may not add to totals shown.

²Schedule B of the United States codes 7404.00.0010 and 7404.00.0015 (no. 1), 7404.00.0025 (no. 2), and 7404.00.0030 (other).

³Schedule B codes for segregated alloyed copper scrap are 7404.00.0041, 7404.00.0046, 7404.00.0051, 7404.00.0056, 7404.00.0061, 7404.00.0066, and 7404.00.0075. Schedule B codes for unsegregated alloyed copper scrap are 7404.00.0085 and 7404.00.0095.

Source: U.S. Census Bureau.