

Mineral Industry Surveys

For information, contact:

Daniel M. Flanagan, Copper Commodity Specialist
National Minerals Information Center
Telephone: (703) 648-7726
Email: dflanagan@usgs.gov

Sheema Merchant (Data)

Telephone: (703) 659-9944

Email: smerchant@usgs.gov

Internet: <https://www.usgs.gov/centers/national-minerals-information-center/mineral-industry-surveys>

COPPER IN MAY 2023

In May 2023, mine production of recoverable copper in the United States was 98,600 metric tons (t). The average daily mine output was 3,180 t, a decrease of 3% from that in April and 9% lower than that in May 2022 (fig. 1). Year-to-date mine production was 489,000 t, a decrease of 6% compared with that in the same time period in 2022 (table 2).

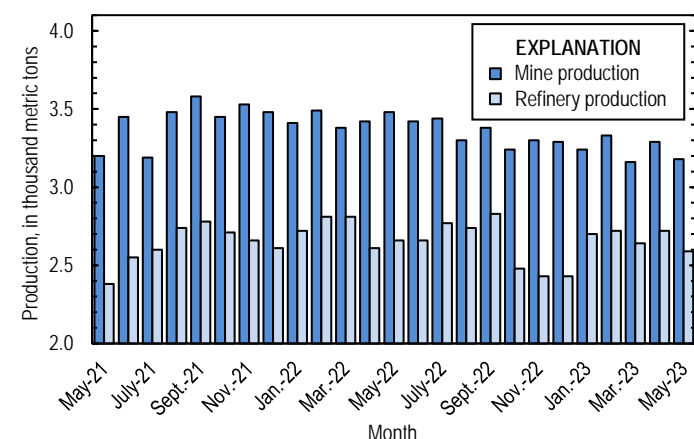


Figure 1. Average daily copper mine (recoverable) and refinery (primary and secondary) production in the United States from May 2021 through May 2023.

Smelter and electrolytic refinery production reported to the U.S. Geological Survey in May 2023 were withheld to avoid disclosing company proprietary data. Smelter and electrolytic refinery output in tables 3 and 4 are estimates based on data in company reports and other public information.

Estimated domestic smelter production was 40,000 t in May 2023. Year-to-date estimated smelter output was 200,000 t, an increase of 21% from that in the same time period in 2022. The smelter production estimates reported in table 3 represent primary production only in 2022 and primary and secondary output in 2023. A secondary copper smelter in Shelby, NC, with a monthly production capacity of roughly 4,200 t of anodes began operating in late 2022 (Toto, 2023).

Total U.S. refinery production in May 2023 was 80,300 t; data for electrolytic and electrowon output, as well as refined production from scrap, are reported in table 4. The average daily refinery production was 2,590 t, 5% less than that in April and slightly lower than that in May 2022 (fig. 1). Year-to-date

refinery output through May 2023 was 404,000 t, a slight decrease relative to the same time period in 2022.

Prices

In May 2023, the average Commodity Exchange Inc. (COMEX) copper price was \$3.74 per pound, a decrease of 6% from \$4.00 per pound in April and 12% less than \$4.25 per pound in May 2022 (fig. 2, table 11). Analysts attributed the reduced price primarily to concerns regarding inflation and economic growth in China (CRU International Ltd., 2023; Wang, 2023). The average U.S. dealers buying price of number 2 copper scrap was \$3.03 per pound in May 2023, a decrease of 4% compared with \$3.17 per pound in April and 8% lower than \$3.28 per pound in May 2022 (fig. 2, table 12).

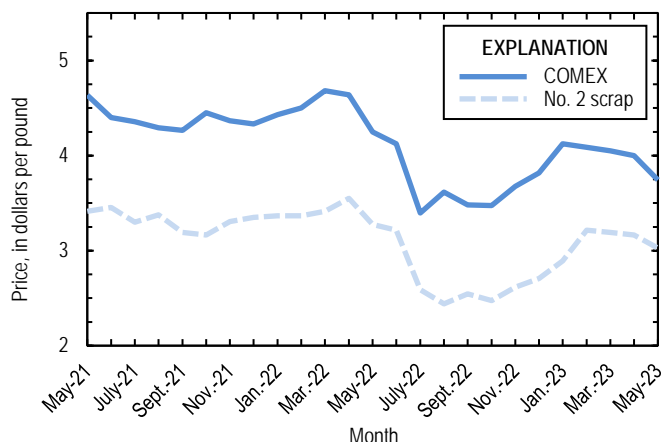


Figure 2. Monthly average Commodity Exchange Inc. (COMEX) copper price and no. 2 copper scrap U.S. dealers buying price from May 2021 through May 2023. Sources: Fastmarkets-AMM and S&P Global Platts Metals Week.

Stocks

Refined copper stocks in the United States totaled 77,200 t at the end of May 2023, essentially unchanged from those in April and a decrease of 39% compared with those in May 2022. Total domestic stocks at producers and fabricators (brass mills, refineries, wire-rod mills, and other manufacturers) declined by 5,280 t (10%) and total stocks at exchanges (COMEX and London Metal Exchange Ltd.) increased by 5,700 t (22%) from those at the end of April (fig. 3, table 10).

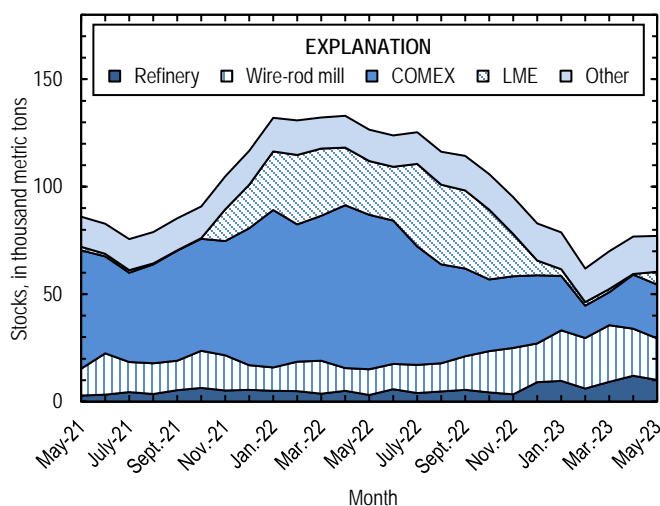


Figure 3. Domestic refined copper stocks at end of month, by type, from May 2021 through May 2023. Sources: London Metal Exchange Ltd., S&P Global Platts Metals Week, and U.S. Geological Survey.

Industry News

China.—Production at the Julong Mine, majority-owned by Zijin Mining Group Co., Ltd., was suspended for approximately 18 days following a lift cage accident on May 14 that resulted in the disappearances of six workers. The Government of China approved the resumption of operations on May 31. Prior to the accident, Zijin expected Julong to produce 152,000 t of copper in concentrates in 2023 (Tibetan Review, 2023; Zijin Mining Group Co., Ltd., 2023, p. 44).

References Cited

- CRU International Ltd., 2023, CRU copper monitor: London, United Kingdom, CRU International Ltd., May, 13 p. (Accessed June 8, 2023, via <https://www.crugroup.com/>.)
- Toto, Deanne, 2023, ISRI2023—Critical copper: Recycling Today, April 22. (Accessed April 23, 2023, at <https://www.recyclingtoday.com/news/isri-2023-spotlight-on-copper-critical-metal/>.)
- Tibetan Review, 2023, Copper mine in Tibet allowed to resume production while cause of accident with 6 fatalities still under investigation: Tibetan Review [Delhi, India], June 1. (Accessed August 21, 2023, at <https://www.tibetanreview.net/copper-mine-in-tibet-allowed-to-resume-production-while-cause-of-accident-with-6-fatalities-still-under-investigation/>.)
- Wang, Ruilin, 2023, Copper CBS May 2023—Price corrects on weak demand, economic uncertainty: S&P Capital IQ, May 17. (Accessed June 8, 2023, via <https://www.capitaliq.spglobal.com/>.)
- Zijin Mining Group Co., Ltd., 2023, Annual report 2022—Providing the materials that improve standards of living in a low carbon future: Longyan, China, Zijin Mining Group Co., Ltd., 460 p. (Accessed July 24, 2023, at <https://www.zijinmining.com/upload/file/2023/04/28/f37618ac59554a0d84a5f89bb99e476a.pdf>.)

List services and web feed subscribers are the first to receive notification of USGS minerals information publications and data releases. For information on how to subscribe, go to <https://www.usgs.gov/centers/national-minerals-information-center/minerals-information-publication-list-services>.

TABLE 1
SALIENT STATISTICS OF THE COPPER INDUSTRY IN THE UNITED STATES¹

(Metric tons, copper content, unless otherwise specified)

	Source table ²	2022 ^p	2023			
			March	April	May	January– May
Production:						
Primary (from ore):						
Mine, recoverable ³	(2)	1,230,000	97,900	98,700	98,600	489,000
Smelter ^{c, 4}	(3)	375,000	40,000	40,000	40,000	200,000
Refinery:						
Electrolytic ^c	(4)	375,000	35,000	35,000	35,000	175,000
Electrowon	(4)	556,000	43,500	43,400	42,100	212,000
Total	(4)	931,000	78,500	78,400	77,100	387,000
Secondary (from copper-base scrap): ⁵						
Refineries ⁶	(5)	40,000	3,220	3,220	3,260	16,100
Ingot makers ^{c, 7}	(5)	39,500	3,290	3,290	3,290	16,400
Brass and wire-rod mills	(5)	650,000	56,300	55,300	54,800	280,000
Foundries, etc. ^{c, 7}	(5)	40,000	3,330	3,330	3,330	16,700
Consumption:						
Reported, refined copper	(7)	1,720,000	139,000	133,000	133,000	663,000
Apparent, primary refined copper and copper from old scrap ⁸	(8)	1,820,000	207,000	180,000	173,000	844,000
Reported, purchased copper-base scrap (gross weight)	(9)	890,000	76,100	75,100	74,500	379,000
Stocks at end of period:						
Blister and anodes	(10)	13,300	14,300	35,100	39,900	39,900
Refined ⁹	(10)	82,800	70,000	76,800	77,200	77,200
Price, U.S. producers cathode (cents per pound) ¹⁰	(11)	410.775	414.915	410.037	384.173	410.236
Imports for consumption: ¹¹						
Ore and concentrates	(13)	11,700	1,500	--	46	3,280
Refined	(13)	732,000	126,000	97,900	86,700	398,000
Exports: ¹¹						
Ore and concentrates	(14)	353,000	37,600	33,300	31,400	166,000
Refined	(14)	27,600	1,290	2,020	1,910	8,400

^cEstimated. ^pPreliminary. -- Zero.

¹Data are rounded to no more than three significant digits, except prices; may not add to totals shown.

²Numbers in parentheses refer to the tables where these data are located.

³Includes the recoverable copper content of concentrates (of copper and other metals), copper produced by solvent extraction and electrowinning, and copper recovered as precipitates.

⁴Contains small quantities of copper from scrap.

⁵Copper recovered from copper-base scrap and converted to refined metal, alloys, and other forms. Does not include copper recovered from scrap other than copper-base.

⁶Electrolytically refined and fire-refined copper.

⁷Plants are surveyed by the U.S. Geological Survey on an annual basis; data after 2021 not yet available. Monthly data are estimated based on the monthly average of 2021 annual data.

⁸Primary refined copper production plus copper recovered from old scrap (of copper-base and non-copper-base) plus refined imports for consumption minus refined exports, including adjustments for refined stock changes. Old scrap consists of copper items used by consumers.

⁹Stocks of refined copper at brass mills, exchanges, refineries, wire-rod mills, and other manufacturers.

¹⁰Source: S&P Global Platts Metals Week. Sum of the monthly average Commodity Exchange Inc. (COMEX) price and monthly average New York dealers cathode premium; reflects the delivered spot price of copper cathode to U.S. consumers by U.S. producers.

¹¹Source: U.S. Census Bureau. See tables 13 and 14 for the relevant Harmonized Tariff Schedule (imports) and Schedule B (exports) codes.

TABLE 2
MINE PRODUCTION OF COPPER IN THE UNITED STATES¹

(Metric tons)

Period	Recoverable copper ²			Contained copper		
	Arizona	Others ³	Total	Electrowon	Concentrates ⁴	Total
2022: ^P						
January–May	361,000	158,000	519,000	228,000	301,000	530,000
May	77,900	29,800	108,000	49,100	60,900	110,000
June	73,900	28,600	103,000	46,500	58,200	105,000
July	73,300	33,500	107,000	47,600	61,400	109,000
August	69,600	32,600	102,000	46,800	57,500	104,000
September	69,700	31,500	101,000	46,800	56,500	103,000
October	69,200	31,200	100,000	48,600	53,800	102,000
November	66,800	32,300	99,100	44,600	56,500	101,000
December	71,400	30,700	102,000	47,000	57,100	104,000
January–December	855,000	378,000	1,230,000	556,000	702,000	1,260,000
2023:						
January	69,400	31,000	100,000	45,600	56,800	102,000
February	63,900	29,200	93,100	37,800	57,400	95,300
March	67,600	30,300	97,900	43,500	56,500	100,000
April	67,700	30,900	98,700	43,400	57,500	101,000
May	66,000	32,500	98,600	42,100	58,700	101,000
January–May	335,000	154,000	489,000	212,000	287,000	499,000

^PPreliminary.

¹Data are rounded to no more than three significant digits; may not add to totals shown.

²Includes the recoverable copper content of concentrates (of copper and other metals), copper produced by solvent extraction and electrowinning, and copper recovered as precipitates.

³Includes production from Michigan, Missouri, Montana, Nevada, New Mexico, and Utah.

⁴Also includes copper recovered as precipitates.

TABLE 3
COPPER PRODUCED AT SMELTERS IN
THE UNITED STATES^{1, 2}

(Metric tons, copper content)

Period	Anode production ^{e, 3}
2022: ^p	
January–May	165,000
May	30,000
June	30,000
July	35,000
August	35,000
September	35,000
October	25,000
November	25,000
December	25,000
January–December	375,000
2023:	
January	40,000
February	40,000
March	40,000
April	40,000
May	40,000
January–May	200,000

^eEstimated. ^pPreliminary.

¹Data are rounded to no more than three significant digits; may not add to totals shown.

²Data reflect primary production in 2022 and primary and secondary production in 2023.

³To avoid disclosing company proprietary data, anode production data are estimated based on public information and do not reflect output reported to the U.S. Geological Survey.

TABLE 4
U.S. PRODUCTION OF REFINED COPPER¹

(Metric tons)

Period	From primary materials			From scrap ³	Total refined
	Electrolytic ^{c, 2}	Electrowon	Total primary		
2022: ^p					
January–May	165,000	228,000	393,000	17,200	410,000
May	30,000	49,100	79,100	3,220	82,300
June	30,000	46,500	76,500	3,370	79,900
July	35,000	47,600	82,600	3,250	85,800
August	35,000	46,800	81,800	3,260	85,000
September	35,000	46,800	81,800	3,220	85,000
October	25,000	48,600	73,600	3,220	76,800
November	25,000	44,600	69,600	3,280	72,900
December	25,000	47,000	72,000	3,240	75,300
January–December	375,000	556,000	931,000	40,000	971,000
2023:					
January	35,000	45,600	80,600	3,220	83,800
February	35,000	37,800	72,800	3,230	76,100
March	35,000	43,500	78,500	3,220	81,700
April	35,000	43,400	78,400	3,220	81,600
May	35,000	42,100	77,100	3,260	80,300
January–May	175,000	212,000	387,000	16,100	404,000

^cEstimated. ^pPreliminary.

¹Data are rounded to no more than three significant digits; may not add to totals shown.

²To avoid disclosing company proprietary data, electrolytic production data are estimated based on public information and do not reflect output reported to the U.S. Geological Survey.

³Electrolytically refined and fire-refined copper.

TABLE 5
COPPER RECOVERED AS REFINED COPPER AND IN ALLOYS AND OTHER FORMS FROM PURCHASED
COPPER-BASE SCRAP IN THE UNITED STATES^{1, 2}

(Metric tons)

Period	Refineries ³		Ingot makers ^{e, 4}		Brass and wire-rod mills		Foundries, etc. ^{e, 4}		Total ⁵
	New scrap ^e	Old scrap	New scrap	Old scrap	New scrap	Old scrap	New scrap	Old scrap	
2022: ^p									
January–May	8,390	8,840	1,750	14,700	250,000	19,300	3,700	13,000	320,000
May	1,680	1,540	350	2,940	49,800	3,640	740	2,590	63,200
June	1,680	1,690	350	2,940	49,800	3,710	740	2,590	63,500
July	1,680	1,570	350	2,940	50,700	3,110	740	2,590	63,700
August	1,680	1,580	350	2,940	51,400	3,330	740	2,590	64,600
September	1,680	1,540	350	2,940	50,800	3,340	740	2,590	64,000
October	1,680	1,540	350	2,940	51,100	3,230	740	2,590	64,200
November	1,680	1,600	350	2,940	51,800	3,270	740	2,590	65,000
December	1,680	1,560	350	2,940	51,800	2,600	740	2,590	64,200
January–December	20,100	19,900	4,200	35,300	608,000	41,900	8,880	31,100	769,000
2023:									
January	1,680	1,540	350	2,940	53,600	4,360	740	2,590	67,800
February	1,680	1,550	350	2,940	52,300	3,360	740	2,590	65,500
March	1,680	1,540	350	2,940	52,700	3,620	740	2,590	66,200
April	1,680	1,540	350	2,940	52,000	3,300	740	2,590	65,100
May	1,680	1,580	350	2,940	51,800	3,020	740	2,590	64,700
January–May	8,390	7,760	1,750	14,700	262,000	17,700	3,700	13,000	329,000

^eEstimated. ^pPreliminary.

¹Data are rounded to no more than three significant digits; may not add to totals shown.

²New scrap refers to material generated during the manufacturing process. Old scrap consists of copper items used by consumers.

³Electrolytically refined and fire refined from scrap based on source of material at smelter or refinery level.

⁴Plants are surveyed by the U.S. Geological Survey on an annual basis; data after 2021 not yet available. Monthly data are estimated based on the monthly average of 2021 annual data.

⁵Does not include an estimate, based on 2021 annual data, of 2,970 tons per month from new scrap and 1,700 tons per month from old scrap of copper recovered from scrap other than copper-base.

TABLE 6
U.S. PRODUCTION, SHIPMENTS, AND STOCKS OF BRASS AND WIRE-ROD SEMIFABRICATES¹

(Metric tons, gross weight)

Period	Production		Shipments		Stocks, end of period	
	Brass mills	Wire-rod mills	Brass mills	Wire-rod mills	Brass mills	Wire-rod mills
2022: ^P						
January–May	378,000	568,000	377,000	566,000	29,400	21,900
May	74,200	112,000	74,300	116,000	29,400	21,900
June	74,800	111,000	74,900	115,000	29,300	17,200
July	74,600	117,000	74,800	114,000	29,100	21,000
August	75,300	112,000	75,200	115,000	29,200	17,900
September	79,900	116,000	79,400	119,000	29,800	15,600
October	75,400	115,000	75,100	114,000	30,000	16,600
November	74,900	94,800	74,800	94,700	30,200	16,600
December	74,800	90,300	74,300	88,400	30,700	18,600
January–December	908,000	1,330,000	906,000	1,330,000	30,700	18,600
2023:						
January	76,400	99,100	75,400	102,000	31,700	15,600
February	75,300	100,000	74,500	104,000	32,500	12,300
March	77,000	105,000	75,000	107,000	34,500	10,500
April	73,500	98,800	74,700	93,100	33,400	16,200
May	72,900	99,500	74,000	99,600	32,300	16,100
January–May	375,000	503,000	374,000	505,000	32,300	16,100

^PPreliminary.

¹Data are rounded to no more than three significant digits; may not add to totals shown.

TABLE 7
U.S. CONSUMPTION OF REFINED COPPER¹

(Metric tons)

Period	Brass mills	Wire-rod mills	Other plants ^{6, 2}	Total
2022: ^p				
January–May	176,000	548,000	17,900	741,000
May	34,900	109,000	3,590	147,000
June	34,800	107,000	3,590	146,000
July	34,900	112,000	3,590	151,000
August	35,000	106,000	3,590	145,000
September	34,900	101,000	3,590	140,000
October	35,000	105,000	3,590	144,000
November	35,000	83,700	3,590	122,000
December	35,200	88,700	3,590	127,000
January–December	420,000	1,250,000	43,000	1,720,000
2023:				
January	34,700	89,600	3,590	128,000
February	36,200	91,100	3,590	131,000
March	34,100	101,000	3,590	139,000
April	35,800	93,400	3,590	133,000
May	35,900	93,200	3,590	133,000
January–May	177,000	469,000	17,900	663,000

⁶Estimated. ^pPreliminary.

¹Data are rounded to no more than three significant digits; may not add to totals shown.

²Chemical plants, foundries, ingot makers, and miscellaneous manufacturers. These plants are surveyed by the U.S. Geological Survey on an annual basis; data after 2021 not yet available. Monthly data are estimated based on the monthly average of 2021 annual data.

TABLE 8
U.S. APPARENT CONSUMPTION OF COPPER¹

(Metric tons)

Period	Primary refined copper production	Copper in old scrap ²	Refined imports for consumption ³	Refined exports ³	Refined stock change during period	Apparent consumption ⁴
2022: ^p						
January–May	393,000	64,300	362,000	13,700	9,850	796,000
May	79,100	12,400	74,300	2,890	-6,470	169,000
June	76,500	12,600	75,900	1,720	-2,560	166,000
July	82,600	11,900	80,900	1,900	1,560	172,000
August	81,800	12,100	36,400	3,060	-9,190	136,000
September	81,800	12,100	50,700	2,470	-1,970	144,000
October	73,600	12,000	49,700	1,190	-8,330	142,000
November	69,600	12,100	37,900	1,430	-10,800	129,000
December	72,000	11,400	38,800	2,100	-12,300	132,000
January–December	931,000	149,000	732,000	27,600	-33,800	1,820,000
2023:						
January	80,600	13,100	39,000	1,190	-4,040	136,000
February	72,800	12,100	48,700	2,000	-16,800	149,000
March	78,500	12,400	126,000	1,290	8,090	207,000
April	78,400	12,100	97,900	2,020	6,790	180,000
May	77,100	11,800	86,700	1,910	424	173,000
January–May	387,000	61,600	398,000	8,400	-5,560	844,000

^pPreliminary.

¹Data are rounded to no more than three significant digits; may not add to totals shown.

²Copper recovered from old scrap (of copper-base and non-copper-base) and converted to refined metal, alloys, and other forms. Includes reported monthly production and estimates for annual reporters based on the monthly average of 2021 annual data. Old scrap consists of copper items used by consumers.

³Source: U.S. Census Bureau. Includes Harmonized Tariff Schedule (imports) and Schedule B (exports) codes 7403.11.0000, 7403.12.0000, 7403.13.0000, and 7403.19.0000.

⁴Primary refined copper production plus copper in old scrap plus refined imports for consumption minus refined exports minus refined stock change during period.

TABLE 9
U.S. CONSUMPTION OF PURCHASED COPPER-BASE SCRAP^{1, 2}

(Metric tons, gross weight)

Period	Smelters and refineries		Ingot makers ^{e, 3}		Brass and wire-rod mills ⁴		Foundries, etc. ^{e, 3}		Total
	New scrap ^e	Old scrap	New scrap	Old scrap	New scrap	Old scrap	New scrap	Old scrap	
2022: ^P									
January–May	8,650	9,110	4,670	17,300	291,000	20,400	4,360	15,200	371,000
May	1,730	1,590	933	3,450	57,800	3,810	871	3,040	73,200
June	1,730	1,740	933	3,450	57,900	3,880	871	3,040	73,500
July	1,730	1,620	933	3,450	58,800	3,220	871	3,040	73,600
August	1,730	1,630	933	3,450	59,500	3,490	871	3,040	74,700
September	1,730	1,590	933	3,450	58,900	3,510	871	3,040	74,000
October	1,730	1,590	933	3,450	59,100	3,340	871	3,040	74,100
November	1,730	1,650	933	3,450	59,800	3,420	871	3,040	74,900
December	1,730	1,610	933	3,450	59,900	2,710	871	3,040	74,200
January–December	20,700	20,500	11,200	41,400	705,000	43,900	10,500	36,500	890,000
2023:									
January	1,730	1,590	933	3,450	61,700	4,500	871	3,040	77,800
February	1,730	1,600	933	3,450	60,400	3,500	871	3,040	75,500
March	1,730	1,590	933	3,450	60,800	3,740	871	3,040	76,100
April	1,730	1,590	933	3,450	60,000	3,430	871	3,040	75,100
May	1,730	1,630	933	3,450	59,800	3,090	871	3,040	74,500
January–May	8,650	8,000	4,670	17,300	303,000	18,300	4,360	15,200	379,000

^eEstimated. ^PPreliminary.

¹Data are rounded to no more than three significant digits; may not add to totals shown.

²New scrap refers to material generated during the manufacturing process. Old scrap consists of copper items used by consumers.

³Plants are surveyed by the U.S. Geological Survey on an annual basis; data after 2021 not yet available. Monthly data are estimated based on the monthly average of 2021 annual data.

⁴Consumption at brass and wire-rod mills assumed equal to receipts.

TABLE 10
COPPER STOCKS IN THE UNITED STATES AT END OF PERIOD¹

(Metric tons, copper content)

Period	Blister and anodes	Refined copper						Total refined
		Refineries	Wire-rod mills	Brass mills	Other ^{e, 2}	COMEX ³	LME ⁴	
2022: ^p								
May	11,500	3,090	12,000	8,330	6,200	71,800	25,100	126,000
June	13,100	5,800	11,700	8,330	6,200	66,700	25,100	124,000
July	12,900	3,980	13,100	8,640	6,200	55,100	38,400	125,000
August	14,200	4,790	13,100	9,010	6,200	46,000	37,100	116,000
September	14,900	5,570	15,500	9,840	6,200	40,800	36,400	114,000
October	18,500	4,300	19,200	10,400	6,200	33,400	32,400	106,000
November	14,600	3,470	21,500	10,800	6,200	33,400	19,700	95,100
December	13,300	9,100	18,000	11,000	6,200	31,700	6,850	82,800
2023:								
January	13,600	9,640	23,500	10,900	6,200	25,400	3,050	78,700
February	13,000	6,040	23,600	9,380	6,200	15,000	1,680	61,900
March	14,300	9,160	26,400	11,400	6,200	15,400	1,400	70,000
April	35,100	12,000	22,000	11,200	6,200	25,100	300	76,800
May	39,900	10,100	19,300	10,500	6,200	25,100	5,950	77,200

^eEstimated. ^pPreliminary.

¹Data are rounded to no more than three significant digits; may not add to totals shown.

²Chemical plants, foundries, ingot makers, and miscellaneous manufacturers. These plants are surveyed by the U.S. Geological Survey on an annual basis; data after 2021 not yet available. Monthly data are estimated based on yearend 2021 stocks.

³Commodity Exchange Inc.

⁴London Metal Exchange Ltd., U.S. warehouses.

TABLE 11
AVERAGE PRICES FOR REFINED COPPER IN THE UNITED STATES
AND ON THE LONDON METAL EXCHANGE

(Cents per pound)

Period	COMEX		
	first position ¹	U.S. producers cathode ²	LME grade A cash ³
2022:			
May	424.929	434.929	424.657
June	412.540	422.540	409.684
July	339.610	350.610	341.513
August	361.500	372.500	361.070
September	348.021	359.021	350.800
October	347.386	358.386	345.649
November	367.683	378.483	364.184
December	381.645	391.895	379.511
Year	400.719	410.775	399.791
2023:			
January	412.233	423.233	408.200
February	408.824	418.824	406.165
March	404.915	414.915	400.734
April	400.037	410.037	399.767
May	374.173	384.173	373.469
January–May	400.036	410.236	397.667

¹Listed as “COMEX high grade first position.” COMEX refers to the Commodity Exchange Inc.

²Sum of “COMEX high grade first position” and “NY dealer premium cathode.” Reflects the delivered spot price of copper cathode to U.S. consumers by U.S. producers.

³LME refers to the London Metal Exchange Ltd.

Source: S&P Global Platts Metals Week.

TABLE 12
AVERAGE BUYING PRICES FOR COPPER SCRAP IN THE UNITED STATES

(Cents per pound)

Period	Brass mills no. 1 scrap	Refiners no. 2 scrap	Dealers	
			No. 2 scrap	Red brass turnings and borings
2022:				
May	414.90	379.40	327.50	196.50
June	401.81	366.31	321.50	185.00
July	329.10	295.60	259.00	172.50
August	350.65	322.65	244.00	153.00
September	335.52	307.81	254.50	148.00
October	333.62	308.71	247.50	148.00
November	356.15	332.15	261.50	150.50
December	371.67	348.57	270.50	155.50
Year	390.04	358.05	296.29	183.13
2023:				
January	401.30	379.30	289.00	159.00
February	397.03	374.29	321.50	159.00
March	392.67	369.41	319.00	156.50
April	389.50	365.84	316.50	158.00
May	365.86	341.68	302.50	154.00
January–May	389.27	366.10	309.70	157.30

Source: Fastmarkets-AMM.

TABLE 13
U.S. IMPORTS FOR CONSUMPTION OF UNMANUFACTURED COPPER¹

(Metric tons, copper content)

Country or locality	Ore and concentrates ²			Matte, ash, and precipitates ³			Blister and anodes ⁴			Refined ⁵		
	2023			2023			2023			2023		
	2022	May	January– May	2022	May	January– May	2022	May	January– May	2022	May	January– May
Austria	--	--	--	--	--	--	--	--	--	54	--	--
Belgium	--	--	--	384	--	175	--	--	--	2	--	--
Canada	11,700	27	3,270	581	74	199	(6)	(6)	(6)	118,000	10,100	51,100
Chile	--	--	--	--	--	--	--	--	--	472,000	57,500	284,000
China	--	--	--	--	--	--	(6)	9	9	897	29	238
Congo (Kinshasa)	--	--	--	--	--	--	--	--	--	8,910	3,020	9,350
Finland	--	--	--	--	--	--	281	--	78	39	--	--
France	--	--	--	--	--	--	15	--	--	53	2	30
Germany	(6)	--	--	94	--	--	(6)	--	(6)	3,410	266	1,480
Hungary	9	19	19	--	--	--	--	--	--	--	--	--
India	11	--	--	--	--	(6)	--	--	(6)	57	--	--
Japan	(6)	--	--	--	--	--	(6)	--	--	1,370	245	1,090
Korea, Republic of	--	--	--	--	--	--	1	(6)	1	10	--	13
Mexico	--	--	--	25	2	6	(6)	--	--	75,500	1,100	8,290
Peru	--	--	--	--	--	--	--	--	--	50,100	12,400	40,600
Qatar	--	--	--	43	--	--	--	--	--	--	--	--
Slovakia	--	--	--	14	--	--	--	--	--	--	--	--
Spain	--	--	--	51	--	151	(6)	--	--	--	--	--
United Kingdom	(6)	--	--	(6)	(6)	(6)	5	(6)	1	138	--	--
Zambia	--	--	--	--	--	--	--	--	--	1,230	2,040	2,040
Other	(6)	--	--	1	--	--	4	(6)	(6)	11	(6)	8
Total	11,700	46	3,280	1,190	76	531	306	10	89	732,000	86,700	398,000

-- Zero.

¹Data are rounded to no more than three significant digits; may not add to totals shown.

²Harmonized Tariff Schedule of the United States (HTS) code 2603.00.0010. Includes copper ore and concentrates only; excludes copper contained in ore and concentrates of other metals.

³HTS codes 2620.30.0010 and 7401.00.0000. Includes copper matte, ash, and precipitates only; excludes the copper content of mattes and ashes of other metals.

⁴HTS code 7402.00.0000.

⁵HTS codes 7403.11.0000, 7403.12.0000, 7403.13.0000, and 7403.19.0000.

⁶Less than ½ unit.

Source: U.S. Census Bureau.

TABLE 14
U.S. EXPORTS OF UNMANUFACTURED COPPER¹

(Metric tons, copper content)

Country or locality	Ore and concentrates ²			Matte, ash, and precipitates ³			Blister and anodes ⁴			Refined ⁵		
	2023			2023			2023			2023		
	2022	May	January– May	2022	May	January– May	2022	May	January– May	2022	May	January– May
Belgium	70	--	--	5,950	522	2,760	211	35	107	--	--	6
Bulgaria	1,540	--	--	--	--	--	--	--	--	--	--	--
Canada	39,800	4,510	18,500	13,500	648	2,060	6,740	3,790	12,600	14,200	102	1,920
China	56,900	3,550	24,700	378	124	407	60	--	61	2,150	39	130
Costa Rica	--	--	--	345	--	4	--	--	--	(6)	--	3
Germany	1,590	--	--	235	46	90	244	28	48	1	--	24
India	--	--	9	16	--	21	1,560	94	170	34	--	37
Israel	--	--	--	--	--	--	115	--	10	98	--	10
Italy	--	--	--	--	2	2	155	24	76	10	(6)	2
Japan	11,000	--	4,260	361	--	20	20	--	30	23	1	1
Korea, Republic of	59	--	--	189	--	9	1,570	118	592	133	19	28
Madagascar	1,220	--	--	--	--	--	--	--	--	--	--	--
Malaysia	186	--	26	147	9	54	168	16	419	51	94	339
Mexico	232,000	23,300	112,000	30	--	1,040	260	21	112	7,680	1,530	5,070
Netherlands	--	--	--	40	--	29	4	--	--	1,070	--	--
Philippines	7,770	--	--	(6)	--	--	67	--	7	35	--	--
Poland	--	--	--	270	137	562	--	--	--	--	--	--
Singapore	--	5	5	414	27	63	40	--	1	22	--	2
Slovakia	--	--	--	1,210	52	210	--	--	--	--	--	--
Spain	26	--	--	1,510	333	1,090	42	--	--	376	(6)	178
Taiwan	--	--	2,880	86	1	1	137	--	25	25	3	6
Thailand	--	--	--	158	--	13	94	20	20	--	--	--
Turkey	--	--	--	233	40	100	20	--	20	20	--	--
United Kingdom	--	--	--	4	--	4	40	--	6	1,630	5	6
Other	718	29	3,570	194	6	141	378	104	201	57	121	640
Total	353,000	31,400	166,000	25,200	1,950	8,680	11,900	4,250	14,500	27,600	1,910	8,400

-- Zero.

¹Data are rounded to no more than three significant digits; may not add to totals shown.

²Schedule B of the United States code 2603.00.0010. Includes copper ore and concentrates only; excludes copper contained in ore and concentrates of other metals.

³Schedule B codes 2620.30.0000, 7401.00.0010, and 7401.00.0050. Includes copper matte, ash, and precipitates only; excludes the copper content of mattes and ashes of other metals.

⁴Schedule B code 7402.00.0000.

⁵Schedule B codes 7403.11.0000, 7403.12.0000, 7403.13.0000, and 7403.19.0000.

⁶Less than ½ unit.

Source: U.S. Census Bureau.

TABLE 15
U.S. IMPORTS FOR CONSUMPTION OF COPPER SCRAP¹

(Metric tons, gross weight)

Country or locality	Unalloyed ²			Alloyed ³		
	2023			2023		
	2022	May	January– May	2022	May	January– May
Antigua and Barbuda	--	--	--	188	11	50
Bahamas, The	--	--	--	612	58	268
Barbados	--	--	--	326	5	39
Bermuda	12	--	13	90	--	19
Bolivia	46	--	--	106	40	40
Brazil	14	--	--	69	11	220
Canada	17,600	1,090	6,510	41,800	3,070	15,000
Cayman Islands	--	--	--	243	25	70
Colombia	196	19	78	106	--	44
Costa Rica	712	80	288	1,350	69	401
Dominican Republic	1,350	75	583	2,090	113	534
Ecuador	24	--	--	57	--	19
El Salvador	--	--	--	1,090	59	347
Germany	260	48	198	50	20	20
Grenada	--	--	--	72	14	58
Guatemala	--	--	--	309	59	118
Haiti	--	--	--	104	19	80
Honduras	24	9	15	787	123	436
Jamaica	7	--	--	461	43	176
Mexico	12,200	1,080	5,690	42,900	4,120	17,900
Nicaragua	--	--	--	194	--	18
Panama	1,190	65	342	405	32	146
Peru	--	--	--	225	--	--
Saudi Arabia	--	--	--	134	--	--
Sint Maarten	1	--	--	54	5	53
Saint Lucia	25	--	--	269	19	95
Saint Vincent and the Grenadines	--	--	--	91	19	62
Suriname	360	37	109	69	5	21
Uruguay	73	10	10	20	10	10
Vietnam	62	--	--	50	--	--
Other	75	(4)	52	401	38	122
Total	34,200	2,510	13,900	94,700	7,990	36,400

-- Zero.

¹Data are rounded to no more than three significant digits; may not add to totals shown.

²Harmonized Tariff Schedule of the United States (HTS) codes 7404.00.3020 and 7404.00.6020.

³HTS codes 7404.00.3045, 7404.00.3055, 7404.00.3065, 7404.00.3090, 7404.00.6045, 7404.00.6055, 7404.00.6065, and 7404.00.6090.

⁴Less than ½ unit.

Source: U.S. Census Bureau.

TABLE 16
U.S. EXPORTS OF COPPER SCRAP¹

(Metric tons, gross weight)

Country or locality	Unalloyed ²							Alloyed ³				
	2023							2023				
	No. 1		No. 2		Other			Segregated		Unsegregated		
	2022	January– May	January– May	May	January– May	May	January– May	2022	January– May	January– May	May	January– May
Austria	1,300	(4)	72	114	230	--	--	1,210	38	317	38	200
Belgium	33,200	712	4,430	975	4,690	472	2,530	8,860	100	403	439	2,550
Canada	60,900	--	--	--	--	6,180	29,900	46,200	--	--	2,800	13,000
China	260,000	5,420	30,000	3,490	21,200	11,800	51,900	31,900	1,660	8,580	1,960	7,300
Germany	15,400	1,090	5,240	80	331	401	2,120	15,300	59	256	933	4,330
Greece	8,830	330	1,510	--	--	57	515	2,170	--	37	139	1,040
Hong Kong	16,800	99	276	1,210	3,210	669	2,020	3,760	188	268	85	975
India	19,900	851	3,490	184	689	557	3,150	65,700	1,870	6,510	4,480	16,000
Japan	25,400	341	1,820	1,370	5,480	355	1,090	6,980	148	479	620	3,000
Korea, Republic of	42,200	503	4,220	44	2,030	449	3,980	11,400	133	1,490	1,570	2,690
Malaysia	24,700	1,050	5,400	506	1,710	1,210	4,590	41,700	445	2,860	3,500	13,000
Mexico	3,120	288	1,070	(4)	2	9	51	8,380	77	183	218	1,130
Netherlands	7,600	--	640	--	41	--	645	1,540	--	--	20	177
Pakistan	1,020	60	145	--	5	--	41	26,300	--	80	1,140	9,360
Philippines	1,660	2	201	--	--	110	267	757	5	48	127	425
Poland	15,700	332	1,400	--	20	1,380	5,670	1,030	--	20	--	249
Singapore	1,210	610	1,150	--	20	--	--	264	--	--	--	128
Slovakia	1,550	95	501	--	--	--	--	2,500	98	506	49	325
Spain	3,860	20	197	--	1	51	657	7,380	100	562	336	1,900
Sweden	581	--	30	--	--	--	--	1,940	--	--	--	169
Taiwan	13,100	117	530	40	1,100	205	1,480	4,440	--	96	588	2,050
Thailand	23,900	740	2,940	--	214	1,810	7,870	39,600	236	1,550	2,910	11,900
Turkey	1,020	2	302	--	--	--	--	2,320	20	20	186	366
United Arab Emirates	766	33	295	--	--	--	--	5,790	--	--	1,040	3,670
Vietnam	139	272	600	90	152	63	143	929	--	--	37	220
Other	2,180	30	278	--	78	--	207	2,400	62	111	147	916
Total	586,000	13,000	66,700	8,100	41,300	25,800	119,000	341,000	5,230	24,400	23,400	97,100

-- Zero.

¹Data are rounded to no more than three significant digits; may not add to totals shown.

²Schedule B of the United States codes 7404.00.0010 and 7404.00.0015 (no. 1), 7404.00.0025 (no. 2), and 7404.00.0030 (other).

³Schedule B codes for segregated alloyed copper scrap are 7404.00.0041, 7404.00.0046, 7404.00.0051, 7404.00.0056, 7404.00.0061, 7404.00.0066, and 7404.00.0075. Schedule B codes for unsegregated alloyed copper scrap are 7404.00.0085 and 7404.00.0095.

⁴Less than ½ unit.

Source: U.S. Census Bureau.