

Mineral Industry Surveys

For information, contact:

Daniel M. Flanagan, Copper Commodity Specialist
National Minerals Information Center
Telephone: (703) 648-7726
Email: dflanagan@usgs.gov

Sheema Merchant (Data)

Telephone: (703) 659-9944

Email: smerchant@usgs.gov

Internet: <https://www.usgs.gov/centers/national-minerals-information-center/mineral-industry-surveys>

COPPER IN JULY 2023

In July 2023, mine production of recoverable copper in the United States was 95,600 metric tons (t). The average daily mine output was 3,090 t, unchanged from that in June and 10% less than that in July 2022 (fig. 1). Year-to-date mine production through July 2023 was 640,000 t, a decrease of 12% compared with that in the same time period in 2022 (table 2).

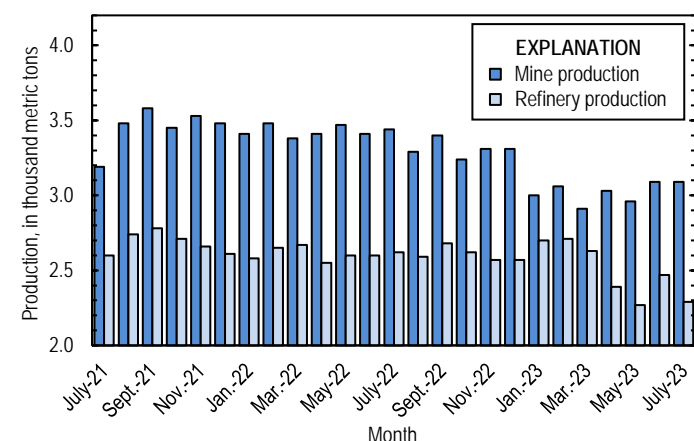


Figure 1. Average daily copper mine (recoverable) and refinery (primary and secondary) production in the United States from July 2021 through July 2023.

To avoid disclosing company proprietary data, smelter and electrolytic refinery production in July 2023 were estimated based on public information and do not reflect output reported to the U.S. Geological Survey. Estimated domestic smelter production was 25,000 t in July 2023. Year-to-date estimated smelter output was 235,000 t, an increase of 13% from that in the same time period in 2022. The smelter production estimates reported in table 3 represent primary production only in 2022 and primary and secondary output in 2023. A secondary copper smelter in Shelby, NC, with a production capacity of roughly 4,200 metric tons per month of anodes began operating in late 2022 (Toto, 2023).

Total U.S. refinery production in July 2023 was 70,900 t; data for electrolytic and electrowon output, as well as refined production from scrap, are reported in table 4. The average daily refinery production was 2,290 t, 7% lower than that in June and a decrease of 13% from that in July 2022 (fig. 1). Year-to-date

refinery output through July 2023 was 528,000 t, a decrease of 5% relative to the same time period in 2022.

Prices

In July 2023, the average Commodity Exchange Inc. (COMEX) copper price was \$3.84 per pound, essentially unchanged compared with \$3.80 per pound in June and 13% greater than \$3.40 per pound in July 2022 (fig. 2, table 11). The average U.S. dealers buying price of number 2 copper scrap was \$2.90 per pound in July 2023, essentially unchanged from \$2.87 per pound in June and an increase of 12% from \$2.59 per pound in July 2022 (fig. 2, table 12).

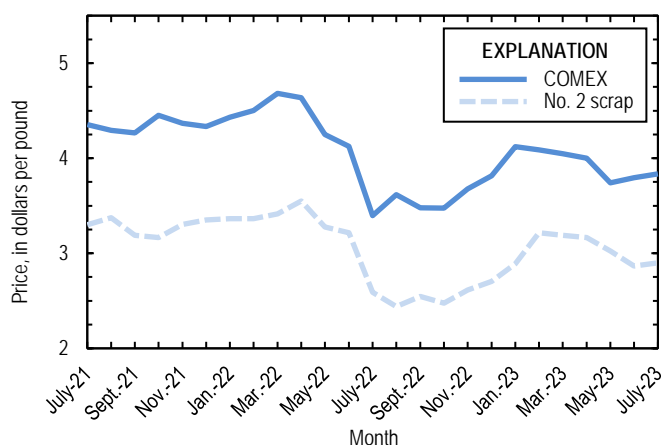


Figure 2. Monthly average Commodity Exchange Inc. (COMEX) copper price and no. 2 copper scrap U.S. dealers buying price from July 2021 through July 2023. Sources: Fastmarkets-AMM and S&P Global Platts Metals Week.

Stocks

Refined copper stocks in the United States totaled 101,000 t at the end of July 2023, 3% less than those in June and a decrease of 20% compared with those in July 2022. Total domestic stocks at producers and fabricators (brass mills, refineries, wire-rod mills, and other manufacturers) declined by 6,410 t (14%) and total stocks at exchanges (COMEX and London Metal Exchange Ltd.) increased by 3,420 t (6%) from those at the end of June (fig. 3, table 10).

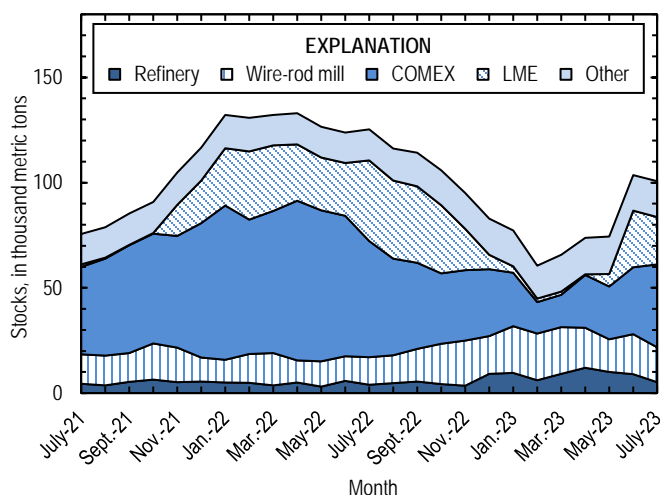


Figure 3. Domestic refined copper stocks at end of month, by type, from July 2021 through July 2023. Sources: London Metal Exchange Ltd., S&P Global Platts Metals Week, and U.S. Geological Survey.

Industry News

Congo (Kinshasa).—On July 10, 2023, CMOC Group Ltd. reported that shipments of copper resumed in late April from the Tenke Fungurume copper-cobalt mine, 80%-owned by CMOC and 20%-owned by Gécamines S.A., following the resolution of a dispute between the partners. A court-appointed administrator had ordered CMOC to stop marketing and exporting its production from the mine in July 2022 because of allegations that the company understated the quantity of reserves to lower its royalty payments to Gécamines. Tenke Fungurume was one of the leading global copper mines in 2022, with output of 254,000 t (Ross, 2022; Njini, 2023).

References Cited

- Njini, Felix, 2023, China's CMOC resumes copper, cobalt shipments from Congo's TFM mine: Reuters, July 10. (Accessed July 14, 2023, at <https://www.reuters.com/article/cmoc-congo-copper-cobalt/chinas-cmoc-resumes-copper-cobalt-shipments-from-congos-tfm-mine-idUSKBN2YQ0FC>.)
- Ross, Aaron, 2022, Congo administrator orders China's CMOC to stop exports from Tenke cobalt mine: Reuters, July 5. (Accessed July 8, 2022, at <https://www.reuters.com/markets/commodities/congo-administrator-orders-chinas-cmoc-stop-exports-tenke-cobalt-mine-2022-07-05/>.)
- Toto, Deanne, 2023, ISRI2023—Critical copper: Recycling Today, April 22. (Accessed April 23, 2023, at <https://www.recyclingtoday.com/news/isri-2023-spotlight-on-copper-critical-metal/>.)

List services and web feed subscribers are the first to receive notification of USGS minerals information publications and data releases. For information on how to subscribe, go to <https://www.usgs.gov/centers/national-minerals-information-center/minerals-information-publication-list-services>.

TABLE 1
SALIENT STATISTICS OF THE COPPER INDUSTRY IN THE UNITED STATES¹

(Metric tons, copper content, unless otherwise specified)

	Source table ²	2022 ^p	2023			
			May	June	July	January– July
Production:						
Primary (from ore):						
Mine, recoverable ³	(2)	1,230,000	91,600	92,800	95,600	640,000
Smelter ^{e,4}	(3)	357,000 ^r	30,000	30,000	25,000	235,000
Refinery:						
Electrolytic	(4)	357,000 ^r	25,000 ^e	25,000 ^e	20,000 ^e	200,000 ^e
Electrowon	(4)	555,000 ^r	42,100	45,800	47,600	305,000
Total	(4)	912,000 ^r	67,100	70,800	67,600	505,000
Secondary (from copper-base scrap): ⁵						
Refineries ⁶	(5)	40,000	3,260	3,230	3,270	22,600
Ingot makers ^{e,7}	(5)	39,500	3,290	3,290	3,290	23,000
Brass and wire-rod mills	(5)	650,000	54,800 ^r	52,900 ^r	55,800	392,000
Foundries, etc. ^{e,7}	(5)	40,000	3,330	3,330	3,330	23,300
Consumption:						
Reported, refined copper	(7)	1,720,000	136,000	125,000 ^r	133,000	929,000
Apparent, primary refined copper and copper from old scrap ⁸	(8)	1,800,000 ^r	163,000 ^r	144,000 ^r	138,000	1,110,000
Reported, purchased copper-base scrap (gross weight)	(9)	890,000	74,700 ^r	72,600 ^r	75,600	530,000
Stocks at end of period:						
Blister and anodes	(10)	13,300	39,900	34,500	19,700	19,700
Refined ⁹	(10)	82,800	79,200 ^r	104,000	101,000	101,000
Price, U.S. producers cathode (cents per pound) ¹⁰	(11)	410.775	384.173	389.598	393.570	404.907
Imports for consumption: ¹¹						
Ore and concentrates	(13)	11,700	46	--	2	3,290
Refined	(13)	732,000	86,700	92,800	60,300	551,000
Exports: ¹¹						
Ore and concentrates	(14)	353,000	31,400	24,800	29,700	221,000
Refined	(14)	27,600	1,910	1,770	4,700	14,900

^eEstimated. ^pPreliminary. ^rRevised. -- Zero.

¹Data are rounded to no more than three significant digits, except prices; may not add to totals shown.

²Numbers in parentheses refer to the tables where these data are located.

³Includes the recoverable copper content of concentrates (of copper and other metals), copper produced by solvent extraction and electrowinning, and copper recovered as precipitates.

⁴Consists of primary production in 2022 and primary and secondary production in 2023.

⁵Copper recovered from copper-base scrap and converted to refined metal, alloys, and other forms. Does not include copper recovered from scrap other than copper-base.

⁶Electrolytically refined and fire-refined copper.

⁷Plants are surveyed by the U.S. Geological Survey on an annual basis; data after 2021 not yet available. Monthly data are estimated based on the monthly average of 2021 annual data.

⁸Primary refined copper production plus copper recovered from old scrap (of copper-base and non-copper-base) plus refined imports for consumption minus refined exports, including adjustments for refined stock changes. Old scrap consists of copper items used by consumers.

⁹Stocks of refined copper at brass mills, exchanges, refineries, wire-rod mills, and other manufacturers.

¹⁰Source: S&P Global Platts Metals Week. Sum of the monthly average Commodity Exchange Inc. (COMEX) price and monthly average New York dealers cathode premium; reflects the delivered spot price of copper cathode to U.S. consumers by U.S. producers.

¹¹Source: U.S. Census Bureau. See tables 13 and 14 for the relevant Harmonized Tariff Schedule (imports) and Schedule B (exports) codes.

TABLE 2
MINE PRODUCTION OF COPPER IN THE UNITED STATES¹

(Metric tons)

Period	Recoverable copper ²			Contained copper		
	Arizona	Others ³	Total	Electrowon	Concentrates ⁴	Total
2022: ^p						
January–July	508,000	218,000 ^r	726,000 ^r	322,000 ^r	420,000 ^r	742,000 ^r
July	73,300	33,300 ^r	107,000	47,500 ^r	61,300 ^r	109,000
August	69,600	32,400 ^r	102,000	46,700 ^r	57,400 ^r	104,000
September	69,700	32,400 ^r	102,000 ^r	46,700 ^r	57,400 ^r	104,000 ^r
October	69,200	31,200	100,000	48,500 ^r	53,800	102,000
November	66,800	32,400 ^r	99,300 ^r	44,500 ^r	56,800 ^r	101,000
December	71,400	31,200 ^r	103,000 ^r	46,900 ^r	57,800 ^r	105,000 ^r
January–December	855,000	378,000	1,230,000	555,000 ^r	704,000 ^r	1,260,000
2023:						
January	67,900	25,000	92,900	45,400 ^r	49,400	94,800 ^r
February	62,400	23,200	85,600	37,700 ^r	49,900	87,600 ^r
March	66,100	24,100	90,200	43,300 ^r	48,700	92,100 ^r
April	68,000	23,000	91,000	43,300 ^r	49,700	93,000
May	66,800	24,800	91,600	42,100	51,600	93,700
June	69,300	23,600	92,800	45,800	49,000	94,800 ^r
July	72,000	23,600	95,600	47,600	50,000	97,600
January–July	473,000	167,000	640,000	305,000	348,000	654,000

^pPreliminary. ^rRevised.

¹Data are rounded to no more than three significant digits; may not add to totals shown.

²Includes the recoverable copper content of concentrates (of copper and other metals), copper produced by solvent extraction and electrowinning, and copper recovered as precipitates.

³Includes production from Michigan, Missouri, Montana, Nevada, New Mexico, and Utah.

⁴Also includes copper recovered as precipitates.

TABLE 3
COPPER PRODUCED AT SMELTERS IN
THE UNITED STATES^{1, 2}

(Metric tons, copper content)

Period	Anode production ^{e, 3}
2022: ^p	
January–July	208,000 ^r
July	30,500 ^r
August	30,500 ^r
September	30,500 ^r
October	29,400 ^r
November	29,400 ^r
December	29,400 ^r
January–December	357,000 ^r
2023:	
January	40,000
February	40,000
March	40,000
April	30,000
May	30,000
June	30,000
July	25,000
January–July	235,000

^eEstimated. ^pPreliminary. ^rRevised.

¹Data are rounded to no more than three significant digits; may not add to totals shown.

²Data reflect primary production in 2022 and primary and secondary production in 2023.

³To avoid disclosing company proprietary data, anode production data are estimated based on public information and do not reflect output reported to the U.S. Geological Survey.

TABLE 4
U.S. PRODUCTION OF REFINED COPPER¹

(Metric tons)

Period	From primary materials			From scrap ³	Total refined
	Electrolytic ²	Electrowon	Total primary		
2022: ^p					
January–July	208,000 ^r	322,000 ^r	529,000 ^r	23,800	553,000 ^r
July	30,500 ^r	47,500 ^r	78,000 ^r	3,250	81,200 ^r
August	30,500 ^r	46,700 ^r	77,200 ^r	3,260	80,400 ^r
September	30,500 ^r	46,700 ^r	77,200 ^r	3,220	80,400 ^r
October	29,400 ^r	48,500 ^r	77,900 ^r	3,220	81,100 ^r
November	29,400 ^r	44,500 ^r	73,900 ^r	3,280	77,200 ^r
December	29,400 ^r	46,900 ^r	76,300 ^r	3,240	79,600 ^r
January–December	357,000 ^r	555,000 ^r	912,000 ^r	40,000	952,000 ^r
2023:					
January	35,000 ^e	45,400 ^r	80,400 ^r	3,220	83,600 ^r
February	35,000 ^e	37,700 ^r	72,700 ^r	3,230	75,900 ^r
March	35,000 ^e	43,300 ^r	78,300 ^r	3,220	81,600 ^r
April	25,000 ^e	43,300 ^r	68,300 ^r	3,220	71,500 ^r
May	25,000 ^e	42,100	67,100	3,260	70,300
June	25,000 ^e	45,800	70,800	3,230	74,000
July	20,000 ^e	47,600	67,600	3,270	70,900
January–July	200,000 ^e	305,000	505,000	22,600	528,000

^eEstimated. ^pPreliminary. ^rRevised.

¹Data are rounded to no more than three significant digits; may not add to totals shown.

²Electrolytic production data in 2022 are sourced from quarterly company reports. To avoid disclosing company proprietary data, electrolytic production data in 2023 are estimated based on public information and do not reflect output reported to the U.S. Geological Survey.

³Electrolytically refined and fire-refined copper.

TABLE 5
COPPER RECOVERED AS REFINED COPPER AND IN ALLOYS AND OTHER FORMS FROM PURCHASED
COPPER-BASE SCRAP IN THE UNITED STATES^{1, 2}

(Metric tons)

Period	Refineries ³		Ingot makers ^{e, 4}		Brass and wire-rod mills		Foundries, etc. ^{e, 4}		Total ⁵
	New scrap ^e	Old scrap	New scrap	Old scrap	New scrap	Old scrap	New scrap	Old scrap	
2022: ^p									
January–July	11,700	12,100	2,450	20,600	351,000	26,200	5,180	18,100	447,000
July	1,680	1,570	350	2,940	50,700	3,110	740	2,590	63,700
August	1,680	1,580	350	2,940	51,400	3,330	740	2,590	64,600
September	1,680	1,540	350	2,940	50,800	3,340	740	2,590	64,000
October	1,680	1,540	350	2,940	51,100	3,230	740	2,590	64,200
November	1,680	1,600	350	2,940	51,800	3,270	740	2,590	65,000
December	1,680	1,560	350	2,940	51,800	2,600	740	2,590	64,200
January–December	20,100	19,900	4,200	35,300	608,000	41,900	8,880	31,100	769,000
2023:									
January	1,680	1,540	350	2,940	54,300 ^r	4,360	740	2,590	68,500 ^r
February	1,680	1,550	350	2,940	53,000 ^r	3,360	740	2,590	66,200 ^r
March	1,680	1,540	350	2,940	53,400 ^r	3,620	740	2,590	66,900 ^r
April	1,680	1,540	350	2,940	52,500 ^r	3,300	740	2,590	65,700 ^r
May	1,680	1,580	350	2,940	51,900 ^r	2,960	740	2,590	64,700 ^r
June	1,680	1,550	350	2,940	49,900 ^r	2,950	740	2,590	62,700 ^r
July	1,680	1,590	350	2,940	52,600	3,260	740	2,590	65,700
January–July	11,700	10,900	2,450	20,600	368,000	23,800	5,180	18,100	460,000

^eEstimated. ^pPreliminary. ^rRevised.

¹Data are rounded to no more than three significant digits; may not add to totals shown.

²New scrap refers to material generated during the manufacturing process. Old scrap consists of copper items used by consumers.

³Electrolytically refined and fire refined from scrap based on source of material at smelter or refinery level.

⁴Plants are surveyed by the U.S. Geological Survey on an annual basis; data after 2021 not yet available. Monthly data are estimated based on the monthly average of 2021 annual data.

⁵Does not include an estimate, based on 2021 annual data, of 2,970 tons per month from new scrap and 1,700 tons per month from old scrap of copper recovered from scrap other than copper-base.

TABLE 6
U.S. PRODUCTION, SHIPMENTS, AND STOCKS OF BRASS AND WIRE-ROD SEMIFABRICATES¹

(Metric tons, gross weight)

Period	Production		Shipments		Stocks, end of period	
	Brass mills	Wire-rod mills	Brass mills	Wire-rod mills	Brass mills	Wire-rod mills
2022: ^p						
January–July	527,000	796,000	527,000	795,000	29,100	21,000
July	74,600	117,000	74,800	114,000	29,100	21,000
August	75,300	112,000	75,200	115,000	29,200	17,900
September	79,900	116,000	79,400	119,000	29,800	15,600
October	75,400	115,000	75,100	114,000	30,000	16,600
November	74,900	94,800	74,800	94,700	30,200	16,600
December	74,800	90,300	74,300	88,400	30,700	18,600
January–December	908,000	1,330,000	906,000	1,330,000	30,700	18,600
2023:						
January	76,400	95,600 ^r	75,400	95,600 ^r	31,700	18,500
February	75,300	98,500 ^r	74,500	102,000 ^r	32,500	15,100 ^r
March	77,000	108,000 ^r	75,000	105,000 ^r	34,500	17,600 ^r
April	73,500	97,500 ^r	74,700	91,700 ^r	33,400	23,400 ^r
May	72,900	100,000 ^r	74,000	101,000 ^r	32,300	22,700 ^r
June	73,100	85,200 ^r	73,000	93,500 ^r	32,400 ^r	14,400 ^r
July	73,700	101,000	73,200	97,000	32,800	18,700
January–July	522,000	686,000	520,000	686,000	32,800	18,700

^pPreliminary. ^rRevised.

¹Data are rounded to no more than three significant digits; may not add to totals shown.

TABLE 7
U.S. CONSUMPTION OF REFINED COPPER¹

(Metric tons)

Period	Brass mills	Wire-rod mills	Other plants ^{e, 2}	Total
2022: ^p				
January–July	245,000	767,000	25,100	1,040,000
July	34,900	112,000	3,590	151,000
August	35,000	106,000	3,590	145,000
September	34,900	101,000	3,590	140,000
October	35,000	105,000	3,590	144,000
November	35,000	83,700	3,590	122,000
December	35,200	88,700	3,590	127,000
January–December	420,000	1,250,000	43,000	1,720,000
2023:				
January	34,700	91,100 ^r	3,590	129,000 ^r
February	36,200	91,200 ^r	3,590	131,000
March	34,100	104,000 ^r	3,590	142,000 ^r
April	35,800	92,400 ^r	3,590	132,000 ^r
May	35,900	96,600 ^r	3,590	136,000
June	35,200	86,400 ^r	3,590	125,000 ^r
July	35,500	94,400	3,590	133,000
January–July	248,000	656,000	25,100	929,000

^eEstimated. ^pPreliminary. ^rRevised.

¹Data are rounded to no more than three significant digits; may not add to totals shown.

²Chemical plants, foundries, ingot makers, and miscellaneous manufacturers. These plants are surveyed by the U.S. Geological Survey on an annual basis; data after 2021 not yet available. Monthly data are estimated based on the monthly average of 2021 annual data.

TABLE 8
U.S. APPARENT CONSUMPTION OF COPPER¹

(Metric tons)

Period	Primary refined copper production	Copper in old scrap ²	Refined imports for consumption ³	Refined exports ³	Refined stock change during period	Apparent consumption ⁴
2022: ^p						
January–July	529,000 ^r	88,800	518,000	17,400	8,850	1,110,000 ^r
July	78,000 ^r	11,900	80,900	1,900	1,560	167,000 ^r
August	77,200 ^r	12,100	36,400	3,060	-9,190	132,000 ^r
September	77,200 ^r	12,100	50,700	2,470	-1,970	139,000 ^r
October	77,900 ^r	12,000	49,700	1,190	-8,330	147,000 ^r
November	73,900 ^r	12,100	37,900	1,430	-10,800	133,000 ^r
December	76,300 ^r	11,400	38,800	2,100	-12,300	137,000 ^r
January–December	912,000 ^r	149,000	732,000	27,600	-33,800	1,800,000 ^r
2023:						
January	80,400 ^r	13,100	39,000	1,190	-5,510 ^r	137,000 ^r
February	72,700 ^r	12,100	48,700	2,000	-16,800	148,000 ^r
March	78,300 ^r	12,400	126,000	1,290	5,250 ^r	210,000 ^r
April	68,300 ^r	12,100	97,900	2,020	8,080 ^r	168,000 ^r
May	67,100	11,800	86,700	1,910	587 ^r	163,000 ^r
June	70,800	11,700	92,800	1,770	29,200 ^r	144,000 ^r
July	67,600	12,100	60,300	4,700	-2,990	138,000
January–July	505,000	85,300	551,000	14,900	17,800	1,110,000

^pPreliminary. ^rRevised.

¹Data are rounded to no more than three significant digits; may not add to totals shown.

²Copper recovered from old scrap (of copper-base and non-copper-base) and converted to refined metal, alloys, and other forms. Includes reported monthly production and estimates for annual reporters based on the monthly average of 2021 annual data. Old scrap consists of copper items used by consumers.

³Source: U.S. Census Bureau. Includes Harmonized Tariff Schedule (imports) and Schedule B (exports) codes 7403.11.0000, 7403.12.0000, 7403.13.0000, and 7403.19.0000.

⁴Primary refined copper production plus copper in old scrap plus refined imports for consumption minus refined exports minus refined stock change during period.

TABLE 9
U.S. CONSUMPTION OF PURCHASED COPPER-BASE SCRAP^{1, 2}

(Metric tons, gross weight)

Period	Smelters and refineries		Ingot makers ^{e, 3}		Brass and wire-rod mills ⁴		Foundries, etc. ^{e, 3}		Total
	New scrap ^e	Old scrap	New scrap	Old scrap	New scrap	Old scrap	New scrap	Old scrap	
2022: ^p									
January–July	12,100	12,500	6,530	24,200	408,000	27,500	6,100	21,300	518,000
July	1,730	1,620	933	3,450	58,800	3,220	871	3,040	73,600
August	1,730	1,630	933	3,450	59,500	3,490	871	3,040	74,700
September	1,730	1,590	933	3,450	58,900	3,510	871	3,040	74,000
October	1,730	1,590	933	3,450	59,100	3,340	871	3,040	74,100
November	1,730	1,650	933	3,450	59,800	3,420	871	3,040	74,900
December	1,730	1,610	933	3,450	59,900	2,710	871	3,040	74,200
January–December	20,700	20,500	11,200	41,400	705,000	43,900	10,500	36,500	890,000
2023:									
January	1,730	1,590	933	3,450	62,400 ^r	4,500	871	3,040	78,500 ^r
February	1,730	1,600	933	3,450	61,100 ^r	3,500	871	3,040	76,200 ^r
March	1,730	1,590	933	3,450	61,500 ^r	3,740	871	3,040	76,800 ^r
April	1,730	1,590	933	3,450	60,600 ^r	3,430	871	3,040	75,600 ^r
May	1,730	1,630	933	3,450	59,900 ^r	3,090	871	3,040	74,700 ^r
June	1,730	1,600	933	3,450	57,900 ^r	3,060	871	3,040	72,600 ^r
July	1,730	1,640	933	3,450	60,600	3,360	871	3,040	75,600
January–July	12,100	11,200	6,530	24,200	424,000	24,700	6,100	21,300	530,000

^eEstimated. ^pPreliminary. ^rRevised.

¹Data are rounded to no more than three significant digits; may not add to totals shown.

²New scrap refers to material generated during the manufacturing process. Old scrap consists of copper items used by consumers.

³Plants are surveyed by the U.S. Geological Survey on an annual basis; data after 2021 not yet available. Monthly data are estimated based on the monthly average of 2021 annual data.

⁴Consumption at brass and wire-rod mills assumed equal to receipts.

TABLE 10
COPPER STOCKS IN THE UNITED STATES AT END OF PERIOD¹

(Metric tons, copper content)

Period	Blister and anodes	Refined copper						Total refined
		Refineries	Wire-rod mills	Brass mills	Other ^{c, 2}	COMEX ³	LME ⁴	
2022: ^p								
July	12,900	3,980	13,100	8,640	6,200	55,100	38,400	125,000
August	14,200	4,790	13,100	9,010	6,200	46,000	37,100	116,000
September	14,900	5,570	15,500	9,840	6,200	40,800	36,400	114,000
October	18,500	4,300	19,200	10,400	6,200	33,400	32,400	106,000
November	14,600	3,470	21,500	10,800	6,200	33,400	19,700	95,100
December	13,300	9,100	18,000	11,000	6,200	31,700	6,850	82,800
2023:								
January	13,600	9,640	22,100 ^r	10,900	6,200	25,400	3,050	77,300 ^r
February	13,000	6,040	22,200 ^r	9,380	6,200	15,000	1,680	60,500 ^r
March	14,300	9,160	22,200 ^r	11,400	6,200	15,400	1,400	65,700 ^r
April	35,100	12,000	19,000 ^r	11,200	6,200	25,100	300	73,800 ^r
May	39,900	10,100	15,400 ^r	11,700	6,200	25,100	5,950	74,400 ^r
June	34,500	9,050	19,000 ^r	10,700	6,200	31,700	26,900	104,000
July	19,700	5,210	16,500	10,800	6,200	39,400	22,600	101,000

^cEstimated. ^pPreliminary. ^rRevised.

¹Data are rounded to no more than three significant digits; may not add to totals shown.

²Chemical plants, foundries, ingot makers, and miscellaneous manufacturers. These plants are surveyed by the U.S. Geological Survey on an annual basis; data after 2021 not yet available. Monthly data are estimated based on yearend 2021 stocks.

³Commodity Exchange Inc.

⁴London Metal Exchange Ltd., U.S. warehouses.

TABLE 11
AVERAGE PRICES FOR REFINED COPPER IN THE UNITED STATES
AND ON THE LONDON METAL EXCHANGE

(Cents per pound)

Period	COMEX		
	first position ¹	U.S. producers cathode ²	LME grade A cash ³
2022:			
July	339.610	350.610	341.513
August	361.500	372.500	361.070
September	348.021	359.021	350.800
October	347.386	358.386	345.649
November	367.683	378.483	364.184
December	381.645	391.895	379.511
Year	400.719	410.775	399.791
2023:			
January	412.233	423.233	408.200
February	408.824	418.824	406.165
March	404.915	414.915	400.734
April	400.037	410.037	399.767
May	374.173	384.173	373.469
June	379.598	389.598	380.362
July	383.570	393.570	383.041
January–July	394.764	404.907	393.105

¹Listed as “COMEX high grade first position.” COMEX refers to the Commodity Exchange Inc.

²Sum of “COMEX high grade first position” and “NY dealer premium cathode.” Reflects the delivered spot price of copper cathode to U.S. consumers by U.S. producers.

³LME refers to the London Metal Exchange Ltd.

Source: S&P Global Platts Metals Week.

TABLE 12
AVERAGE BUYING PRICES FOR COPPER SCRAP IN THE UNITED STATES

(Cents per pound)

Period	Brass mills no. 1 scrap	Refiners no. 2 scrap	Dealers	
			No. 2 scrap	Red brass turnings and borings
2022:				
July	329.10	295.60	259.00	172.50
August	350.65	322.65	244.00	153.00
September	335.52	307.81	254.50	148.00
October	333.62	308.71	247.50	148.00
November	356.15	332.15	261.50	150.50
December	371.67	348.57	270.50	155.50
Year	390.04	358.05	296.29	183.13
2023:				
January	401.30	379.30	289.00	159.00
February	397.03	374.29	321.50	159.00
March	392.67	369.41	319.00	156.50
April	389.50	365.84	316.50	158.00
May	365.86	341.68	302.50	154.00
June	371.69	347.00	286.50	154.00
July	376.35	351.85	290.00	168.00
January–July	384.91	361.34	303.57	158.36

Source: Fastmarkets-AMM.

TABLE 13
U.S. IMPORTS FOR CONSUMPTION OF UNMANUFACTURED COPPER¹

(Metric tons, copper content)

Country or locality	Ore and concentrates ²			Matte, ash, and precipitates ³			Blister and anodes ⁴			Refined ⁵		
	2023			2023			2023			2023		
	2022	July	January– July	2022	July	January– July	2022	July	January– July	2022	July	January– July
Austria	--	--	--	--	--	--	--	--	--	54	--	--
Belgium	--	--	--	384	--	175	--	--	--	2	--	--
Canada	11,700	(6)	3,270	581	29	283	(6)	5	5	118,000	10,900	72,200
Chile	--	--	--	--	--	--	--	--	--	472,000	44,500	401,000
China	--	--	--	--	--	--	(6)	--	9	897	57	325
Congo (Kinshasa)	--	--	--	--	--	--	--	--	--	8,910	394	11,800
Finland	--	--	--	--	--	--	281	--	78	39	--	--
France	--	--	--	--	--	--	15	--	--	53	6	47
Germany	(6)	--	--	94	--	--	(6)	--	(6)	3,410	53	1,630
Hungary	9	--	19	--	--	--	--	--	--	--	--	--
India	11	--	--	--	--	(6)	--	--	(6)	57	--	--
Japan	(6)	--	--	--	--	--	(6)	--	(6)	1,370	213	1,500
Korea, Republic of	--	--	--	--	--	--	1	--	1	10	--	35
Mexico	--	2	2	25	4	13	(6)	--	--	75,500	200	8,970
Peru	--	--	--	--	--	--	--	--	--	50,100	4,050	51,700
Qatar	--	--	--	43	--	--	--	--	--	--	--	--
Slovakia	--	--	--	14	--	--	--	--	--	--	--	--
Spain	--	--	--	51	--	151	(6)	--	--	--	--	--
United Kingdom	(6)	--	--	(6)	--	(6)	5	(6)	1	138	--	--
Zambia	--	--	--	--	--	--	--	--	--	1,230	--	2,040
Other	(6)	--	--	1	--	(6)	4	(6)	(6)	11	(6)	10
Total	11,700	2	3,290	1,190	34	622	306	5	94	732,000	60,300	551,000

-- Zero.

¹Data are rounded to no more than three significant digits; may not add to totals shown.

²Harmonized Tariff Schedule of the United States (HTS) code 2603.00.0010. Includes copper ore and concentrates only; excludes copper contained in ore and concentrates of other metals.

³HTS codes 2620.30.0010 and 7401.00.0000. Includes copper matte, ash, and precipitates only; excludes the copper content of mattes and ashes of other metals.

⁴HTS code 7402.00.0000.

⁵HTS codes 7403.11.0000, 7403.12.0000, 7403.13.0000, and 7403.19.0000.

⁶Less than ½ unit.

Source: U.S. Census Bureau.

TABLE 14
U.S. EXPORTS OF UNMANUFACTURED COPPER¹

(Metric tons, copper content)

Country or locality	Ore and concentrates ²			Matte, ash, and precipitates ³			Blister and anodes ⁴			Refined ⁵		
	2023			2023			2023			2023		
	2022	July	January– July	2022	July	January– July	2022	July	January– July	2022	July	January– July
Belgium	70	27	76	5,950	265	3,490	211	27	141	--	--	6
Bulgaria	1,540	--	--	--	--	--	--	--	--	--	--	--
Canada	39,800	5,310	26,500	13,500	150	2,450	6,740	3,070	19,000	14,200	58	2,310
China	56,900	1,850	33,500	378	9	416	60	2	63	2,150	39	177
Costa Rica	--	--	5	345	--	4	--	--	--	(6)	--	3
Germany	1,590	--	--	235	31	121	244	--	48	1	2,670	2,700
India	--	--	9	16	16	36	1,560	--	187	34	--	37
Israel	--	--	--	--	--	--	115	--	26	98	--	12
Italy	--	--	--	--	--	2	155	3	79	10	--	2
Japan	11,000	--	4,260	361	--	20	20	--	30	23	1	2
Korea, Republic of	59	--	--	189	--	9	1,570	118	847	133	19	47
Madagascar	1,220	--	--	--	--	--	--	--	--	--	--	--
Malaysia	186	--	27	147	19	126	168	51	510	51	297	813
Mexico	232,000	19,300	147,000	30	--	1,060	260	1	115	7,680	237	6,480
Netherlands	--	--	--	40	--	29	4	--	--	1,070	1,380	1,380
Philippines	7,770	--	--	(6)	317	317	67	--	7	35	--	--
Poland	--	--	--	270	75	695	--	--	--	--	--	--
Singapore	--	--	5	414	84	181	40	(6)	2	22	(6)	49
Slovakia	--	--	--	1,210	21	264	--	--	--	--	--	--
Spain	26	--	--	1,510	313	1,560	42	--	--	376	--	178
Taiwan	--	3,120	6,000	86	--	1	137	--	25	25	--	14
Thailand	--	--	--	158	--	13	94	--	20	--	--	--
Turkey	--	--	--	233	60	159	20	--	20	20	--	--
United Kingdom	--	--	--	4	--	4	40	--	6	1,630	--	6
Other	718	26	3,610	194	18	158	378	3	211	57	2	647
Total	353,000	29,700	221,000	25,200	1,380	11,100	11,900	3,280	21,300	27,600	4,700	14,900

-- Zero.

¹Data are rounded to no more than three significant digits; may not add to totals shown.

²Schedule B of the United States code 2603.00.0010. Includes copper ore and concentrates only; excludes copper contained in ore and concentrates of other metals.

³Schedule B codes 2620.30.0000, 7401.00.0010, and 7401.00.0050. Includes copper matte, ash, and precipitates only; excludes the copper content of mattes and ashes of other metals.

⁴Schedule B code 7402.00.0000.

⁵Schedule B codes 7403.11.0000, 7403.12.0000, 7403.13.0000, and 7403.19.0000.

⁶Less than ½ unit.

Source: U.S. Census Bureau.

TABLE 15
U.S. IMPORTS FOR CONSUMPTION OF COPPER SCRAP¹

(Metric tons, gross weight)

Country or locality	Unalloyed ²			Alloyed ³		
	2023			2023		
	2022	July	January– July	2022	July	January– July
Antigua and Barbuda	--	--	--	188	13	74
Bahamas, The	--	--	--	612	70	366
Barbados	--	--	--	326	35	77
Bermuda	12	--	24	90	16	47
Bolivia	46	--	--	106	--	40
Brazil	14	--	113	69	--	220
Canada	17,600	1,350	9,010	41,800	2,780	20,300
Cayman Islands	--	--	--	243	13	115
Colombia	196	--	78	106	19	83
Costa Rica	712	42	408	1,350	71	563
Dominican Republic	1,350	92	771	2,090	150	853
Ecuador	24	--	--	57	68	88
El Salvador	--	--	--	1,090	80	545
Germany	260	57	309	50	18	38
Grenada	--	--	--	72	30	88
Guatemala	--	--	--	309	56	174
Haiti	--	--	--	104	37	117
Honduras	24	2	19	787	96	647
Jamaica	7	--	--	461	17	214
Mexico	12,200	966	7,630	42,900	4,240	26,300
Nicaragua	--	--	--	194	--	35
Panama	1,190	69	461	405	66	279
Peru	--	--	--	225	37	57
Saudi Arabia	--	--	--	134	--	--
Sint Maarten	1	--	--	54	12	86
Saint Lucia	25	--	--	269	12	124
Saint Vincent and the Grenadines	--	--	--	91	15	88
Suriname	360	22	153	69	--	51
Uruguay	73	--	27	20	--	12
Vietnam	62	--	--	50	--	--
Other	75	11	63	401	142	325
Total	34,200	2,610	19,100	94,700	8,090	52,000

-- Zero.

¹Data are rounded to no more than three significant digits; may not add to totals shown.

²Harmonized Tariff Schedule of the United States (HTS) codes 7404.00.3020 and 7404.00.6020.

³HTS codes 7404.00.3045, 7404.00.3055, 7404.00.3065, 7404.00.3090, 7404.00.6045, 7404.00.6055, 7404.00.6065, and 7404.00.6090.

Source: U.S. Census Bureau.

TABLE 16
U.S. EXPORTS OF COPPER SCRAP¹

(Metric tons, gross weight)

Country or locality	Unalloyed ²							Alloyed ³				
	2023							2023				
	No. 1		No. 2		Other			Segregated		Unsegregated		
	2022	January– July	January– July	July	January– July	July	January– July	2022	July	January– July	July	January– July
Austria	1,300	--	110	--	266	--	--	1,210	155	604	18	366
Belgium	33,200	994	6,590	639	6,350	286	3,200	8,860	57	537	446	3,640
Canada	60,900	--	--	--	--	5,450	42,200	46,200	--	--	1,630	16,800
China	260,000	7,760	44,200	4,110	28,200	12,500	75,700	31,900	1,480	11,800	1,080	9,580
Germany	15,400	1,070	7,240	19	466	593	3,340	15,300	76	391	975	6,250
Greece	8,830	449	2,280	--	--	83	716	2,170	23	59	20	1,120
Hong Kong	16,800	38	414	1,120	5,420	523	3,460	3,760	--	288	143	1,460
India	19,900	942	5,080	97	860	901	5,000	65,700	1,890	9,630	3,100	21,500
Japan	25,400	267	2,530	769	7,400	441	1,990	6,980	57	630	310	3,610
Korea, Republic of	42,200	1,110	6,360	554	2,720	760	5,510	11,400	426	2,180	1,880	5,000
Malaysia	24,700	1,260	7,640	434	2,380	961	6,700	41,700	524	3,970	3,010	19,400
Mexico	3,120	187	1,440	(4)	2	44	161	8,380	--	228	65	1,300
Netherlands	7,600	--	828	--	98	--	645	1,540	--	--	--	196
Pakistan	1,020	28	177	--	5	--	41	26,300	--	80	710	11,200
Philippines	1,660	145	526	--	--	46	394	757	8	61	67	560
Poland	15,700	315	1,870	--	20	949	7,440	1,030	--	20	--	249
Singapore	1,210	142	1,610	--	20	--	--	264	--	--	43	171
Slovakia	1,550	39	578	--	--	--	--	2,500	--	642	--	330
Spain	3,860	39	260	38	39	--	696	7,380	40	742	79	2,140
Sweden	581	--	30	--	--	--	--	1,940	--	--	33	248
Taiwan	13,100	124	874	54	1,250	297	2,110	4,440	--	134	408	2,570
Thailand	23,900	524	4,170	24	258	1,860	12,100	39,600	255	2,010	2,450	16,900
Turkey	1,020	140	452	--	--	--	--	2,320	--	20	20	386
United Arab Emirates	766	--	295	--	--	--	--	5,790	--	--	880	5,500
Vietnam	139	141	865	74	226	317	785	929	--	--	--	220
Other	2,180	30	333	38	135	89	415	2,400	20	197	50	1,070
Total	586,000	15,700	96,800	7,960	56,100	26,100	173,000	341,000	5,020	34,200	17,400	132,000

-- Zero.

¹Data are rounded to no more than three significant digits; may not add to totals shown.

²Schedule B of the United States codes 7404.00.0010 and 7404.00.0015 (no. 1), 7404.00.0025 (no. 2), and 7404.00.0030 (other).

³Schedule B codes for segregated alloyed copper scrap are 7404.00.0041, 7404.00.0046, 7404.00.0051, 7404.00.0056, 7404.00.0061, 7404.00.0066, and 7404.00.0075. Schedule B codes for unsegregated alloyed copper scrap are 7404.00.0085 and 7404.00.0095.

⁴Less than ½ unit.

Source: U.S. Census Bureau.