

Mineral Industry Surveys

For information, contact:

Daniel M. Flanagan, Copper Commodity Specialist
National Minerals Information Center
Telephone: (703) 648-7726
Email: dflanagan@usgs.gov

Sheema Merchant (Data)

Telephone: (703) 659-9944

Email: smerchant@usgs.gov

Internet: <https://www.usgs.gov/centers/national-minerals-information-center/mineral-industry-surveys>

COPPER IN DECEMBER 2023

In December 2023, mine production of recoverable copper in the United States was 96,600 metric tons (t). The average daily mine output was 3,120 t, an increase of 3% from that in November and 6% lower than that in December 2022 (fig. 1). Full-year mine production in 2023 was 1.11 million metric tons, a decrease of 10% compared with that in 2022 (table 2).

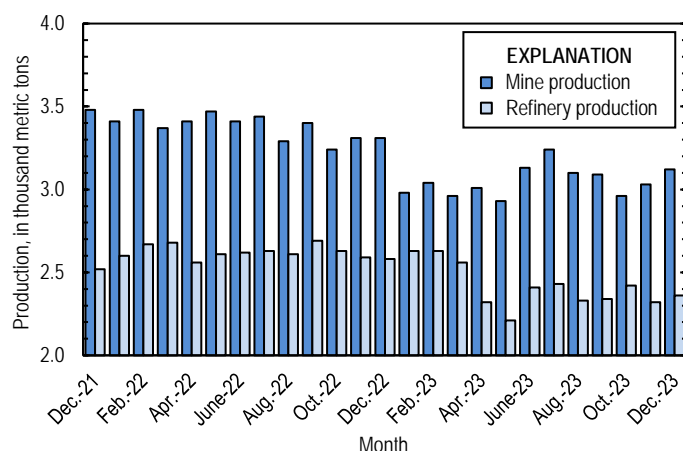


Figure 1. Average daily copper mine (recoverable) and refinery (primary and secondary) production in the United States from December 2021 through December 2023.

Production decreased at a majority of U.S. copper mines in 2023. At Freeport-McMoRan Inc.'s seven mines in Arizona and New Mexico, total copper output decreased by approximately 63,000 t (8%) from that in 2022, primarily owing to lower ore grades at the Morenci and Safford Mines (Freeport-McMoRan Inc., 2024, p. 32, 92). The Bingham Canyon Mine in Utah, owned by Rio Tinto Group, produced 152,000 t of copper in concentrates in 2023, 15% less than 179,000 t in 2022 because of record snowfall in the first quarter and a conveyor belt failure at the concentrator in early March. Concentration operations did not return to full capacity until the third quarter (Rio Tinto Group, 2023a, p. 11; 2023c, p. 13; 2024, p. 28). Mined copper output also decreased significantly at KGHM International Ltd.'s Robinson Mine in Nevada, reflecting processing of ore from a relatively low-grade transition zone of the mine deposit. Full-year results were not publicly available at the time of

publication, but production through the third quarter of 2023 was 17,300 t (56%) lower than that during the same time period in 2022 (KGHM Polska Miedź S.A. Group, 2023, p. 31).

Production of anodes at domestic copper smelters totaled 36,000 t in December 2023. Full-year smelter output was 378,000 t, an increase of 7% compared with that in 2022 (table 3). In 2023, a decrease in primary production of 25,600 t (18%) at Rio Tinto's Kennecott smelter near Salt Lake City, UT, was partially offset by an increase of 20,000 t (10%) at Freeport's refinery in El Paso, TX (Freeport-McMoRan Inc., 2024, p. 26; Rio Tinto Group, 2024, p. 28). A secondary copper smelter in Shelby, NC, with a production capacity of roughly 4,200 metric tons per month of anodes began operating in late 2022 (Toto, 2023).

Total U.S. refinery production of copper in December 2023 was 73,300 t; data for electrolytic and electrowon output, as well as refined production from scrap, are reported in table 4. The average daily refinery production was 2,360 t, slightly greater than that in November and a decrease of 8% from that in December 2022 (fig. 1). Full-year refinery output in 2023 was 881,000 t, a decrease of 8% compared with that in 2022. Domestic refined copper production in 2023 was affected by a major rebuild of the Kennecott smelter and electrolytic refinery that began in May and was completed in October (Rio Tinto Group, 2023b, p. 14; 2023c, p. 13).

Prices

In December 2023, the average Commodity Exchange Inc. (COMEX) copper price was \$3.85 per pound, 4% higher than \$3.72 per pound in November and essentially unchanged from \$3.82 per pound in December 2022 (fig. 2, table 11). The average full-year COMEX price in 2023 was \$3.86 per pound, 4% less than \$4.01 per pound in 2022. Freeport-McMoRan, the leading copper producer in the United States, attributed the increased annual price to factors such as positive sentiment regarding the economy in China, overall strong global demand for copper, and expectations for reduced output from some of the leading foreign copper mines in the near future (Freeport-McMoRan Inc., 2024, p. 80). The average U.S. dealers buying price of number 2 copper scrap was \$2.93 per pound in December 2023, an increase of 4% compared with \$2.80 per

pound in November and 8% greater than \$2.71 per pound in December 2022 (fig. 2, table 12). The annual average number 2 copper scrap price in 2023 was essentially unchanged from that in 2022 at \$2.98 per pound.

Stocks

Refined copper stocks in the United States totaled 127,000 t as of the end of December 2023, 12% lower than those in November and 53% higher than those in December 2022. Total stocks at producers and fabricators (brass mills, refineries, wire-rod mills, and other manufacturers) increased by 5,650 t (17%) and total stocks at exchanges (COMEX and London Metal Exchange Ltd.) decreased by 22,300 t (20%) compared with those at the end of November (fig. 3, table 10).

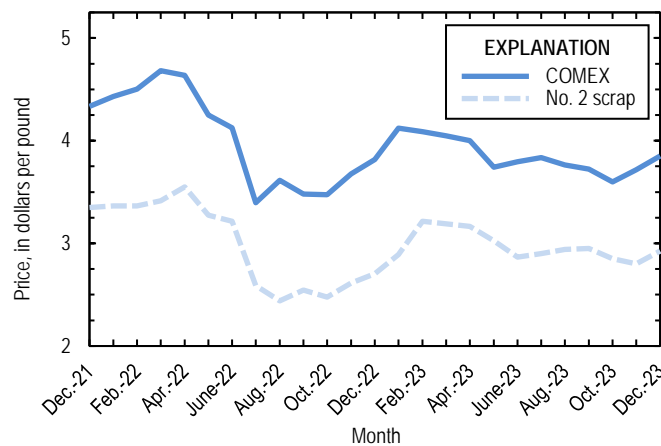


Figure 2. Monthly average Commodity Exchange Inc. (COMEX) copper price and no. 2 copper scrap U.S. dealers buying price from December 2021 through December 2023. Sources: Fastmarkets-AMM and S&P Global Platts Metals Week.

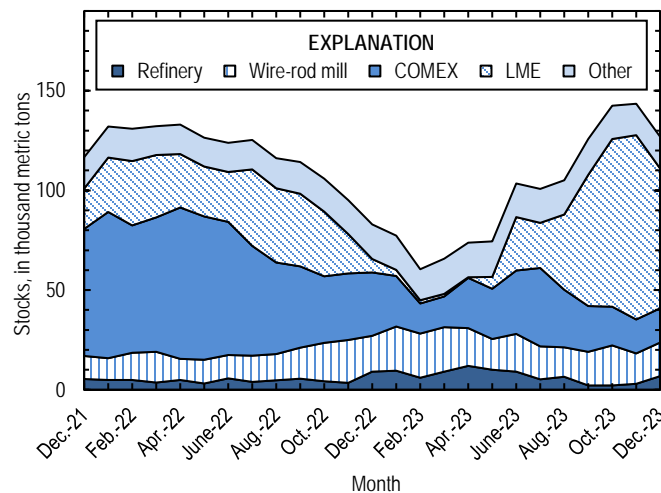


Figure 3. Domestic refined copper stocks at end of month, by type, from December 2021 through December 2023. Sources: London Metal Exchange Ltd., S&P Global Platts Metals Week, and U.S. Geological Survey.

References Cited

Freeport-McMoRan Inc., 2024, Form 10-K—2023: U.S. Securities and Exchange Commission, 186 p. (Accessed February 20, 2024, at https://s22.q4cdn.com/529358580/files/doc_financials/10-K/10_k2023.pdf.)

KGHM Polska Miedz S.A. Group, 2023, Consolidated quarterly report QSR 3 / 2023: Lubin, Poland, KGHM Polska Miedz S.A. Group, November 15, 77 p. (Accessed December 18, 2023, at https://kgbm.com/sites/default/files/document-attachments/consolidated_quarterly_report_kghm_group_qsr_3_2023.pdf.)

Rio Tinto Group, 2023a, Rio Tinto releases first quarter production results: London, United Kingdom, Rio Tinto Group media release, April 20, 27 p. (Accessed May 18, 2023, at <https://cdn-rio.dataweavers.io/-/media/content/documents/invest/financial-news-and-performance/production/2023/rt-first-quarter-operations-review-2023-pdf.pdf?rev=1d399efcf56f49b9b721b44bb6196fcf>.)

Rio Tinto Group, 2023b, Rio Tinto releases second quarter production results: London, United Kingdom, Rio Tinto Group media release, July 19, 31 p. (Accessed August 9, 2023, at <https://cdn-rio.dataweavers.io/-/media/content/documents/invest/financial-news-and-performance/production/2023/rt-second-quarter-operations-review-2023-pdf.pdf?rev=7bf74899c2043d6ba526ffd63b9fb77>.)

Rio Tinto Group, 2023c, Rio Tinto releases third quarter production results: London, United Kingdom, Rio Tinto Group media release, October 17, 29 p. (Accessed October 26, 2023, at <https://cdn-rio.dataweavers.io/-/media/content/documents/invest/financial-news-and-performance/production/2023/rt-third-quarter-operations-review-2023-pdf.pdf?rev=0124283449a1418ca020e1bf8456634d>.)

Rio Tinto Group, 2024, Rio Tinto releases fourth quarter production results: London, United Kingdom, Rio Tinto Group media release, January 16, 31 p. (Accessed February 9, 2023, at <https://cdn-rio.dataweavers.io/-/media/content/documents/invest/financial-news-and-performance/production/2023/rt-2023-4qor.pdf?rev=dff506df74ef4e2fad7475d0afc6a03e>.)

Toto, Deanne, 2023, ISRI2023—Critical copper: Recycling Today, April 22. (Accessed April 23, 2023, at <https://www.recyclingtoday.com/news/isri-2023-spotlight-on-copper-critical-metal/>.)

List services and web feed subscribers are the first to receive notification of USGS minerals information publications and data releases. For information on how to subscribe, go to <https://www.usgs.gov/centers/national-minerals-information-center/minerals-information-publication-list-services>.

TABLE 1
SALIENT STATISTICS OF THE COPPER INDUSTRY IN THE UNITED STATES¹

(Metric tons, copper content, unless otherwise specified)

| | Source table ² | 2022 ^p | 2023 | | | |
|---|------------------------------|----------------------|----------------------|----------------------|----------|----------------------|
| | | | October | November | December | January– December |
| Production: | | | | | | |
| Primary (from ore): | | | | | | |
| Mine, recoverable ³ | (2) | 1,230,000 | 91,700 ^r | 91,000 ^r | 96,600 | 1,110,000 |
| Smelter ⁴ | (3) | 354,000 ^r | 36,000 ^r | 36,000 ^r | 36,000 | 378,000 |
| Refinery: | | | | | | |
| Electrolytic | (4) | 362,000 ^r | 28,900 ^r | 28,900 ^r | 28,900 | 327,000 |
| Electrowon | (4) | 555,000 | 43,000 ^r | 37,600 ^r | 41,100 | 515,000 |
| Total | (4) | 917,000 ^r | 71,900 ^r | 66,500 ^r | 70,000 | 842,000 |
| Secondary (from copper-base scrap): ⁵ | | | | | | |
| Refineries ⁶ | (5) | 40,000 | 3,250 | 3,220 | 3,240 | 38,900 |
| Ingot makers ^{6, 7} | (5) | 39,500 | 3,290 | 3,290 | 3,290 | 39,500 |
| Brass and wire-rod mills | (5) | 650,000 | 54,900 | 55,700 ^r | 54,800 | 668,000 |
| Foundries, etc. ^{6, 7} | (5) | 40,000 | 3,330 | 3,330 | 3,330 | 40,000 |
| Consumption: | | | | | | |
| Reported, refined copper | (7) | 1,720,000 | 130,000 ^r | 122,000 ^r | 121,000 | 1,580,000 |
| Apparent, primary refined copper and copper from old scrap ⁸ | (8) | 1,800,000 | 112,000 ^r | 102,000 ^r | 121,000 | 1,680,000 |
| Reported, purchased copper-base scrap (gross weight) | (9) | 890,000 | 74,700 | 75,400 ^r | 74,600 | 906,000 |
| Stocks at end of period: | | | | | | |
| Blister and anodes | (10) | 13,300 | 14,300 | 10,500 ^r | 10,500 | 10,500 |
| Refined ⁹ | (10) | 82,800 | 142,000 ^r | 143,000 ^r | 127,000 | 127,000 |
| Price, U.S. producers cathode (cents per pound) ¹⁰ | (11) | 410.775 | 368.664 | 379.211 | 392.653 | 395.297 |
| Imports for consumption: ¹¹ | | | | | | |
| Ore and concentrates | (13) | 11,700 | -- | 15 | (12) | 3,300 |
| Refined | (13) | 732,000 | 48,800 | 30,000 | 26,800 | 771,000 |
| Exports: ¹¹ | | | | | | |
| Ore and concentrates | (14) | 353,000 | 28,500 | 21,900 | 25,500 | 341,000 |
| Refined | (14) | 27,600 | 3,910 | 4,870 | 3,540 | 34,400 |

^eEstimated. ^pPreliminary. ^rRevised. -- Zero.

¹Data are rounded to no more than three significant digits, except prices; may not add to totals shown.

²Numbers in parentheses refer to the tables where these data are located.

³Includes the recoverable copper content of concentrates (of copper and other metals), copper produced by solvent extraction and electrowinning, and copper recovered as precipitates.

⁴Data in 2022 are derived from public company reports and reflect primary production only. Data in 2023 include primary production derived from public company reports and an estimated 3,000 metric tons per month of secondary anodes.

⁵Copper recovered from copper-base scrap and converted to refined metal, alloys, and other forms. Does not include copper recovered from scrap other than copper-base.

⁶Electrolytically refined and fire-refined copper.

⁷Plants are surveyed by the U.S. Geological Survey on an annual basis; data after 2021 not yet available. Monthly data are estimated based on the monthly average of 2021 annual data.

⁸Primary refined copper production plus copper recovered from old scrap (of copper-base and non-copper-base) plus refined imports for consumption minus refined exports, including adjustments for refined stock changes. Old scrap consists of copper items used by consumers.

⁹Stocks of refined copper at brass mills, exchanges, refineries, wire-rod mills, and other manufacturers.

¹⁰Source: S&P Global Platts Metals Week. Sum of the monthly average Commodity Exchange Inc. (COMEX) price and monthly average New York dealers cathode premium; reflects the delivered spot price of copper cathode to U.S. consumers by U.S. producers.

¹¹Source: U.S. Census Bureau. See tables 13 and 14 for the relevant Harmonized Tariff Schedule (imports) and Schedule B (exports) codes.

¹²Less than ½ unit.

TABLE 2
MINE PRODUCTION OF COPPER IN THE UNITED STATES¹

(Metric tons)

| Period | Recoverable copper ² | | | Contained copper | | |
|--------------------|---------------------------------|---------------------|----------------------|---------------------|---------------------------|----------------------|
| | Arizona | Others ³ | Total | Electrowon | Concentrates ⁴ | Total |
| 2022: ^p | | | | | | |
| December | 71,400 | 31,200 | 103,000 | 46,900 | 57,800 | 105,000 |
| January–December | 855,000 | 378,000 | 1,230,000 | 555,000 | 704,000 | 1,260,000 |
| 2023: | | | | | | |
| January | 67,400 ^r | 25,000 | 92,400 ^r | 45,500 ^r | 48,800 ^r | 94,300 ^r |
| February | 62,000 ^r | 23,200 | 85,200 ^r | 37,800 ^r | 49,400 ^r | 87,200 ^r |
| March | 67,800 ^r | 24,100 | 91,900 ^r | 43,300 | 50,500 ^r | 93,900 ^r |
| April | 67,300 ^r | 23,000 | 90,300 ^r | 43,400 ^r | 48,800 ^r | 92,300 ^r |
| May | 66,000 ^r | 24,800 | 90,900 ^r | 42,400 ^r | 50,500 ^r | 92,900 ^r |
| June | 70,200 ^r | 23,600 | 93,800 ^r | 46,000 ^r | 49,800 ^r | 95,700 |
| July | 69,000 ^r | 31,400 | 100,000 ^r | 47,700 ^r | 54,800 ^r | 102,000 ^r |
| August | 66,700 ^r | 29,500 | 96,300 ^r | 44,500 ^r | 53,800 ^r | 98,300 ^r |
| September | 64,600 ^r | 28,100 | 92,700 ^r | 42,500 ^r | 52,000 ^r | 94,500 ^r |
| October | 63,100 ^r | 28,700 | 91,700 ^r | 43,000 ^r | 50,600 ^r | 93,600 ^r |
| November | 63,000 ^r | 28,000 | 91,000 ^r | 37,600 ^r | 55,500 ^r | 93,100 ^r |
| December | 65,700 | 30,900 | 96,600 | 41,100 | 56,900 | 98,000 |
| January–December | 793,000 | 320,000 | 1,110,000 | 515,000 | 621,000 | 1,140,000 |

^pPreliminary. ^rRevised.

¹Data are rounded to no more than three significant digits; may not add to totals shown.

²Includes the recoverable copper content of concentrates (of copper and other metals), copper produced by solvent extraction and electrowinning, and copper recovered as precipitates.

³Includes production from Michigan, Missouri, Montana, Nevada, New Mexico, and Utah.

⁴Also includes copper recovered as precipitates.

TABLE 3
COPPER PRODUCED AT SMELTERS IN
THE UNITED STATES¹

(Metric tons, copper content)

| Period | Anode production ² |
|--------------------|----------------------------------|
| 2022: ^p | |
| December | 25,000 ^r |
| January–December | 354,000 ^r |
| 2023: | |
| January | 40,000 |
| February | 40,000 |
| March | 40,000 |
| April | 28,000 ^r |
| May | 28,000 ^r |
| June | 28,000 ^r |
| July | 22,000 ^r |
| August | 22,000 ^r |
| September | 22,000 ^r |
| October | 36,000 ^r |
| November | 36,000 ^r |
| December | 36,000 |
| January–December | 378,000 |

^pPreliminary. ^rRevised.

¹Data are rounded to no more than three significant digits; may not add to totals shown.

²Data in 2022 are derived from public company reports and reflect primary production only. Data in 2023 include primary production derived from public company reports and an estimated 3,000 metric tons per month of secondary anodes.

TABLE 4
U.S. PRODUCTION OF REFINED COPPER¹

(Metric tons)

| Period | From primary materials | | | From scrap ³ | Total refined |
|--------------------|---------------------------|---------------------|----------------------|-------------------------|----------------------|
| | Electrolytic ² | Electrowon | Total primary | | |
| 2022: ^p | | | | | |
| December | 29,800 ^r | 46,900 | 76,700 ^r | 3,240 | 80,000 ^r |
| January–December | 362,000 ^r | 555,000 | 917,000 ^r | 40,000 | 957,000 ^r |
| 2023: | | | | | |
| January | 32,700 ^r | 45,500 ^r | 78,200 ^r | 3,220 | 81,400 ^r |
| February | 32,700 ^r | 37,800 ^r | 70,500 ^r | 3,230 | 73,700 ^r |
| March | 32,700 ^r | 43,300 | 76,000 ^r | 3,220 | 79,200 ^r |
| April | 23,000 ^r | 43,400 ^r | 66,400 ^r | 3,220 | 69,600 ^r |
| May | 23,000 ^r | 42,400 ^r | 65,400 ^r | 3,260 | 68,700 ^r |
| June | 23,000 ^r | 46,000 ^r | 69,000 ^r | 3,230 | 72,200 ^r |
| July | 24,400 ^r | 47,700 ^r | 72,100 ^r | 3,270 | 75,400 ^r |
| August | 24,400 ^r | 44,500 ^r | 68,900 ^r | 3,220 | 72,100 ^r |
| September | 24,400 ^r | 42,500 ^r | 66,900 ^r | 3,300 | 70,200 ^r |
| October | 28,900 ^r | 43,000 ^r | 71,900 ^r | 3,250 | 75,200 ^r |
| November | 28,900 ^r | 37,600 ^r | 66,500 ^r | 3,220 | 69,700 ^r |
| December | 28,900 | 41,100 | 70,000 | 3,240 | 73,300 |
| January–December | 327,000 | 515,000 | 842,000 | 38,900 | 881,000 |

^pPreliminary. ^rRevised.

¹Data are rounded to no more than three significant digits; may not add to totals shown.

²Electrolytic production data are derived from public company reports.

³Electrolytically refined and fire-refined copper.

TABLE 5
COPPER RECOVERED AS REFINED COPPER AND IN ALLOYS AND OTHER FORMS FROM PURCHASED
COPPER-BASE SCRAP IN THE UNITED STATES^{1, 2}

(Metric tons)

| Period | Refineries ³ | | Ingot makers ^{e, 4} | | Brass and wire-rod mills | | Foundries, etc. ^{e, 4} | | Total ⁵ |
|--------------------|-------------------------|-----------|------------------------------|-----------|--------------------------|-----------|---------------------------------|-----------|---------------------|
| | New scrap ^e | Old scrap | New scrap | Old scrap | New scrap | Old scrap | New scrap | Old scrap | |
| 2022: ^p | | | | | | | | | |
| December | 1,680 | 1,560 | 350 | 2,940 | 51,800 | 2,600 | 740 | 2,590 | 64,200 |
| January–December | 20,100 | 19,900 | 4,200 | 35,300 | 608,000 | 41,900 | 8,880 | 31,100 | 769,000 |
| 2023: | | | | | | | | | |
| January | 1,680 | 1,540 | 350 | 2,940 | 54,300 | 4,360 | 740 | 2,590 | 68,500 |
| February | 1,680 | 1,550 | 350 | 2,940 | 53,000 | 3,360 | 740 | 2,590 | 66,200 |
| March | 1,680 | 1,540 | 350 | 2,940 | 53,400 | 3,620 | 740 | 2,590 | 66,900 |
| April | 1,680 | 1,540 | 350 | 2,940 | 52,500 | 3,300 | 740 | 2,590 | 65,700 |
| May | 1,680 | 1,580 | 350 | 2,940 | 51,900 | 2,960 | 740 | 2,590 | 64,700 |
| June | 1,680 | 1,550 | 350 | 2,940 | 49,900 | 2,950 | 740 | 2,590 | 62,700 |
| July | 1,680 | 1,590 | 350 | 2,940 | 52,600 | 3,260 | 740 | 2,590 | 65,700 |
| August | 1,680 | 1,540 | 350 | 2,940 | 53,500 | 3,280 | 740 | 2,590 | 66,600 |
| September | 1,680 | 1,620 | 350 | 2,940 | 51,800 | 2,960 | 740 | 2,590 | 64,600 |
| October | 1,680 | 1,570 | 350 | 2,940 | 51,700 | 3,220 | 740 | 2,590 | 64,800 |
| November | 1,680 | 1,540 | 350 | 2,940 | 53,000 ^r | 2,700 | 740 | 2,590 | 65,500 ^r |
| December | 1,680 | 1,560 | 350 | 2,940 | 52,500 | 2,240 | 740 | 2,590 | 64,600 |
| January–December | 20,100 | 18,700 | 4,200 | 35,300 | 630,000 | 38,200 | 8,880 | 31,100 | 787,000 |

^eEstimated. ^pPreliminary. ^rRevised.

¹Data are rounded to no more than three significant digits; may not add to totals shown.

²New scrap refers to material generated during the manufacturing process. Old scrap consists of copper items used by consumers.

³Electrolytically refined and fire refined from scrap based on source of material at smelter or refinery level.

⁴Plants are surveyed by the U.S. Geological Survey on an annual basis; data after 2021 not yet available. Monthly data are estimated based on the monthly average of 2021 annual data.

⁵Does not include an estimate, based on 2021 annual data, of 2,970 tons per month from new scrap and 1,700 tons per month from old scrap of copper recovered from scrap other than copper-base.

TABLE 6
U.S. PRODUCTION, SHIPMENTS, AND STOCKS OF BRASS AND WIRE-ROD SEMIFABRICATES¹

(Metric tons, gross weight)

| Period | Production | | Shipments | | Stocks, end of period | |
|--------------------|---------------------|----------------|---------------------|----------------|-----------------------|----------------|
| | Brass mills | Wire-rod mills | Brass mills | Wire-rod mills | Brass mills | Wire-rod mills |
| 2022: ^p | | | | | | |
| December | 74,800 | 90,300 | 74,300 | 88,400 | 30,700 | 18,600 |
| January–December | 908,000 | 1,330,000 | 906,000 | 1,330,000 | 30,700 | 18,600 |
| 2023: | | | | | | |
| January | 76,400 | 95,600 | 75,400 | 95,600 | 31,700 | 18,500 |
| February | 75,300 | 98,500 | 74,500 | 102,000 | 32,500 | 15,100 |
| March | 77,000 | 108,000 | 75,000 | 105,000 | 34,500 | 17,600 |
| April | 73,500 | 97,500 | 74,700 | 91,700 | 33,400 | 23,400 |
| May | 72,900 | 100,000 | 74,000 | 101,000 | 32,300 | 22,700 |
| June | 73,100 | 85,200 | 73,000 | 93,500 | 32,400 | 14,400 |
| July | 73,700 | 101,000 | 73,200 | 97,000 | 32,800 | 18,700 |
| August | 74,800 | 103,000 | 74,900 | 101,000 | 32,700 | 20,800 |
| September | 74,100 | 103,000 | 73,900 | 101,000 | 32,900 | 23,600 |
| October | 74,700 | 100,000 | 74,300 ^r | 108,000 | 32,900 ^r | 16,100 |
| November | 71,200 ^r | 93,500 | 71,800 ^r | 94,600 | 32,300 ^r | 14,900 |
| December | 73,500 | 84,700 | 72,700 | 79,600 | 33,200 | 20,300 |
| January–December | 890,000 | 1,170,000 | 887,000 | 1,170,000 | 33,200 | 20,300 |

^pPreliminary. ^rRevised.

¹Data are rounded to no more than three significant digits; may not add to totals shown.

TABLE 7
U.S. CONSUMPTION OF REFINED COPPER¹

(Metric tons)

| Period | Brass mills | Wire-rod mills | Other plants ^{e, 2} | Total |
|--------------------|---------------------|---------------------|---------------------------------|----------------------|
| 2022: ^p | | | | |
| December | 35,200 | 88,700 | 3,590 | 127,000 |
| January–December | 420,000 | 1,250,000 | 43,000 | 1,720,000 |
| 2023: | | | | |
| January | 34,700 | 91,100 | 3,590 | 129,000 |
| February | 36,200 | 91,200 | 3,590 | 131,000 |
| March | 34,100 | 104,000 | 3,590 | 142,000 |
| April | 35,800 | 92,400 | 3,590 | 132,000 |
| May | 35,900 | 96,600 | 3,590 | 136,000 |
| June | 35,200 | 86,400 | 3,590 | 125,000 |
| July | 35,500 | 94,400 | 3,590 | 133,000 |
| August | 35,200 | 99,800 | 3,590 | 139,000 |
| September | 35,000 | 96,000 | 3,590 | 135,000 |
| October | 36,500 ^r | 90,300 | 3,590 | 130,000 ^r |
| November | 31,800 ^r | 86,900 ^r | 3,590 | 122,000 ^r |
| December | 33,300 | 84,300 | 3,590 | 121,000 |
| January–December | 419,000 | 1,110,000 | 43,000 | 1,580,000 |

^eEstimated. ^pPreliminary. ^rRevised.

¹Data are rounded to no more than three significant digits; may not add to totals shown.

²Chemical plants, foundries, ingot makers, and miscellaneous manufacturers. These plants are surveyed by the U.S. Geological Survey on an annual basis; data after 2021 not yet available. Monthly data are estimated based on the monthly average of 2021 annual data.

TABLE 8
U.S. APPARENT CONSUMPTION OF COPPER¹

(Metric tons)

| Period | Primary refined copper production | Copper in old scrap ² | Refined imports for consumption ³ | Refined exports ³ | Refined stock change during period | Apparent consumption ⁴ |
|--------------------|-----------------------------------|----------------------------------|--|------------------------------|------------------------------------|-----------------------------------|
| 2022: ^p | | | | | | |
| December | 76,700 ^r | 11,400 | 38,800 | 2,100 | -12,300 | 137,000 |
| January–December | 917,000 ^r | 149,000 | 732,000 | 27,600 | -33,800 | 1,800,000 |
| 2023: | | | | | | |
| January | 78,200 ^r | 13,100 | 39,000 | 1,190 | -5,510 | 135,000 ^r |
| February | 70,500 ^r | 12,100 | 48,700 | 2,000 | -16,800 | 146,000 ^r |
| March | 76,000 ^r | 12,400 | 126,000 | 1,290 | 5,250 | 208,000 ^r |
| April | 66,400 ^r | 12,100 | 97,900 | 2,020 | 8,080 | 166,000 ^r |
| May | 65,400 ^r | 11,800 | 86,700 | 1,910 | 587 | 161,000 ^r |
| June | 69,000 ^r | 11,700 | 92,800 | 1,770 | 29,200 | 143,000 ^r |
| July | 72,100 ^r | 12,100 | 60,300 | 4,700 | -2,990 | 143,000 ^r |
| August | 68,900 ^r | 12,000 | 54,300 | 3,580 | 4,450 | 127,000 ^r |
| September | 66,900 ^r | 11,800 | 59,700 | 3,650 | 20,700 | 114,000 ^r |
| October | 71,900 ^r | 12,000 | 48,800 | 3,910 | 16,600 ^r | 112,000 ^r |
| November | 66,500 ^r | 11,500 | 30,000 | 4,870 | 1,110 ^r | 102,000 ^r |
| December | 70,000 | 11,000 | 26,800 | 3,540 | -16,600 | 121,000 |
| January–December | 842,000 | 144,000 | 771,000 | 34,400 | 44,100 | 1,680,000 |

^pPreliminary. ^rRevised.

¹Data are rounded to no more than three significant digits; may not add to totals shown.

²Copper recovered from old scrap (of copper-base and non-copper-base) and converted to refined metal, alloys, and other forms. Includes reported monthly production and estimates for annual reporters based on the monthly average of 2021 annual data. Old scrap consists of copper items used by consumers.

³Source: U.S. Census Bureau. Includes Harmonized Tariff Schedule (imports) and Schedule B (exports) codes 7403.11.0000, 7403.12.0000, 7403.13.0000, and 7403.19.0000.

⁴Primary refined copper production plus copper in old scrap plus refined imports for consumption minus refined exports minus refined stock change during period.

TABLE 9
U.S. CONSUMPTION OF PURCHASED COPPER-BASE SCRAP^{1, 2}

(Metric tons, gross weight)

| Period | Smelters and refineries | | Ingot makers ^{e, 3} | | Brass and wire-rod mills ⁴ | | Foundries, etc. ^{e, 3} | | Total |
|--------------------|----------------------------|-----------|------------------------------|-----------|--|-----------|---------------------------------|-----------|---------------------|
| | New scrap ^e | Old scrap | New scrap | Old scrap | New scrap | Old scrap | New scrap | Old scrap | |
| 2022: ^p | | | | | | | | | |
| December | 1,730 | 1,610 | 933 | 3,450 | 59,900 | 2,710 | 871 | 3,040 | 74,200 |
| January–December | 20,700 | 20,500 | 11,200 | 41,400 | 705,000 | 43,900 | 10,500 | 36,500 | 890,000 |
| 2023: | | | | | | | | | |
| January | 1,730 | 1,590 | 933 | 3,450 | 62,400 | 4,500 | 871 | 3,040 | 78,500 |
| February | 1,730 | 1,600 | 933 | 3,450 | 61,100 | 3,500 | 871 | 3,040 | 76,200 |
| March | 1,730 | 1,590 | 933 | 3,450 | 61,500 | 3,740 | 871 | 3,040 | 76,800 |
| April | 1,730 | 1,590 | 933 | 3,450 | 60,600 | 3,430 | 871 | 3,040 | 75,600 |
| May | 1,730 | 1,630 | 933 | 3,450 | 59,900 | 3,090 | 871 | 3,040 | 74,700 |
| June | 1,730 | 1,600 | 933 | 3,450 | 57,900 | 3,060 | 871 | 3,040 | 72,600 |
| July | 1,730 | 1,640 | 933 | 3,450 | 60,600 | 3,360 | 871 | 3,040 | 75,600 |
| August | 1,730 | 1,590 | 933 | 3,450 | 61,500 | 3,400 | 871 | 3,040 | 76,500 |
| September | 1,730 | 1,670 | 933 | 3,450 | 59,800 | 3,060 | 871 | 3,040 | 74,500 |
| October | 1,730 | 1,620 | 933 | 3,450 | 59,800 | 3,340 | 871 | 3,040 | 74,700 |
| November | 1,730 | 1,590 | 933 | 3,450 | 61,000 ^r | 2,810 | 871 | 3,040 | 75,400 ^r |
| December | 1,730 | 1,610 | 933 | 3,450 | 60,600 | 2,370 | 871 | 3,040 | 74,600 |
| January–December | 20,700 | 19,300 | 11,200 | 41,400 | 727,000 | 39,700 | 10,500 | 36,500 | 906,000 |

^eEstimated. ^pPreliminary. ^rRevised.

¹Data are rounded to no more than three significant digits; may not add to totals shown.

²New scrap refers to material generated during the manufacturing process. Old scrap consists of copper items used by consumers.

³Plants are surveyed by the U.S. Geological Survey on an annual basis; data after 2021 not yet available. Monthly data are estimated based on the monthly average of 2021 annual data.

⁴Consumption at brass and wire-rod mills assumed equal to receipts.

TABLE 10
COPPER STOCKS IN THE UNITED STATES AT END OF PERIOD¹

(Metric tons, copper content)

| Period | Blister and anodes | Refined copper | | | | | | Total refined |
|--------------------|-----------------------|----------------|---------------------|---------------------|-----------------------|--------------------|------------------|----------------------|
| | | Refineries | Wire-rod mills | Brass mills | Other ^{c, 2} | COMEX ³ | LME ⁴ | |
| 2022: ^p | | | | | | | | |
| December | 13,300 | 9,100 | 18,000 | 11,000 | 6,200 | 31,700 | 6,850 | 82,800 |
| 2023: | | | | | | | | |
| January | 13,600 | 9,640 | 22,100 | 10,900 | 6,200 | 25,400 | 3,050 | 77,300 |
| February | 13,000 | 6,040 | 22,200 | 9,380 | 6,200 | 15,000 | 1,680 | 60,500 |
| March | 14,300 | 9,160 | 22,200 | 11,400 | 6,200 | 15,400 | 1,400 | 65,700 |
| April | 35,100 | 12,000 | 19,000 | 11,200 | 6,200 | 25,100 | 300 | 73,800 |
| May | 39,900 | 10,100 | 15,400 | 11,700 | 6,200 | 25,100 | 5,950 | 74,400 |
| June | 34,500 | 9,050 | 19,000 | 10,700 | 6,200 | 31,700 | 26,900 | 104,000 |
| July | 20,400 | 5,210 | 16,500 | 10,800 | 6,200 | 39,400 | 22,600 | 101,000 |
| August | 17,700 | 6,560 | 14,700 | 11,100 | 6,200 | 29,000 | 37,600 | 105,000 |
| September | 15,000 | 2,170 | 16,800 | 11,700 | 6,200 | 23,000 | 65,900 | 126,000 |
| October | 14,300 | 2,230 | 20,100 | 10,500 ^r | 6,200 | 19,300 | 84,100 | 142,000 ^r |
| November | 10,500 ^r | 3,070 | 15,100 ^r | 9,530 ^r | 6,200 | 17,100 | 92,500 | 143,000 ^r |
| December | 10,500 | 6,810 | 16,900 | 9,680 | 6,200 | 17,200 | 70,100 | 127,000 |

^cEstimated. ^pPreliminary. ^rRevised.

¹Data are rounded to no more than three significant digits; may not add to totals shown.

²Chemical plants, foundries, ingot makers, and miscellaneous manufacturers. These plants are surveyed by the U.S. Geological Survey on an annual basis; data after 2021 not yet available. Monthly data are estimated based on yearend 2021 stocks.

³Commodity Exchange Inc.

⁴London Metal Exchange Ltd., U.S. warehouses.

TABLE 11
AVERAGE PRICES FOR REFINED COPPER IN THE UNITED STATES
AND ON THE LONDON METAL EXCHANGE

(Cents per pound)

| Period | COMEX | | |
|------------------|-----------------------------|-------------------------------------|-------------------------------|
| | first position ¹ | U.S. producers cathode ² | LME grade A cash ³ |
| 2022: | | | |
| December | 381.645 | 391.895 | 379.511 |
| Year | 400.719 | 410.775 | 399.791 |
| 2023: | | | |
| January | 412.233 | 423.233 | 408.200 |
| February | 408.824 | 418.824 | 406.165 |
| March | 404.915 | 414.915 | 400.734 |
| April | 400.037 | 410.037 | 399.767 |
| May | 374.173 | 384.173 | 373.469 |
| June | 379.598 | 389.598 | 380.362 |
| July | 383.570 | 393.570 | 383.041 |
| August | 376.330 | 386.330 | 378.804 |
| September | 372.360 | 382.360 | 375.129 |
| October | 359.964 | 368.664 | 360.118 |
| November | 371.836 | 379.211 | 370.743 |
| December | 385.153 | 392.653 | 380.729 |
| January–December | 385.749 | 395.297 | 384.772 |

¹Listed as “COMEX high grade first position.” COMEX refers to the Commodity Exchange Inc.

²Sum of “COMEX high grade first position” and “NY dealer premium cathode.” Reflects the delivered spot price of copper cathode to U.S. consumers by U.S. producers.

³LME refers to the London Metal Exchange Ltd.

Source: S&P Global Platts Metals Week.

TABLE 12
AVERAGE BUYING PRICES FOR COPPER SCRAP IN THE UNITED STATES

(Cents per pound)

| Period | Brass mills no. 1 scrap | Refiners no. 2 scrap | Dealers | |
|------------------|----------------------------|-------------------------|----------------|--------------------------------------|
| | | | No. 2 scrap | Red brass turnings and borings |
| 2022: | | | | |
| December | 371.67 | 348.57 | 270.50 | 155.50 |
| Year | 390.04 | 358.05 | 296.29 | 183.13 |
| 2023: | | | | |
| January | 401.30 | 379.30 | 289.00 | 159.00 |
| February | 397.03 | 374.29 | 321.50 | 159.00 |
| March | 392.67 | 369.41 | 319.00 | 156.50 |
| April | 389.50 | 365.84 | 316.50 | 158.00 |
| May | 365.86 | 341.68 | 302.50 | 154.00 |
| June | 371.69 | 347.00 | 286.50 | 154.00 |
| July | 376.35 | 351.85 | 290.00 | 168.00 |
| August | 369.28 | 343.74 | 294.00 | 187.50 |
| September | 367.05 | 341.55 | 295.00 | 190.00 |
| October | 352.14 | 325.64 | 285.00 | 182.50 |
| November | 363.50 | 337.00 | 280.00 | 183.00 |
| December | 377.50 | 351.00 | 292.50 | 188.00 |
| January–December | 376.99 | 352.36 | 297.63 | 169.96 |

Source: Fastmarkets-AMM.

TABLE 13
U.S. IMPORTS FOR CONSUMPTION OF UNMANUFACTURED COPPER¹

(Metric tons, copper content)

| Country or locality | Ore and concentrates ² | | | Matte, ash, and precipitates ³ | | | Blister and anodes ⁴ | | | Refined ⁵ | | |
|------------------------|-----------------------------------|----------|----------------------|---|----------|----------------------|---------------------------------|----------|----------------------|----------------------|----------|----------------------|
| | 2023 | | | 2023 | | | 2023 | | | 2023 | | |
| | 2022 | December | January– December | 2022 | December | January– December | 2022 | December | January– December | 2022 | December | January– December |
| Austria | -- | -- | -- | -- | -- | -- | -- | -- | -- | 54 | -- | -- |
| Belgium | -- | -- | -- | 384 | -- | 175 | -- | -- | -- | 2 | (6) | (6) |
| Canada | 11,700 | -- | 3,270 | 581 | 34 | 675 | (6) | -- | 5 | 118,000 | 9,700 | 128,000 |
| Chile | -- | -- | -- | -- | -- | -- | -- | -- | -- | 472,000 | 15,000 | 531,000 |
| China | -- | -- | -- | -- | -- | -- | (6) | -- | 9 | 897 | (6) | 462 |
| Congo (Kinshasa) | -- | -- | -- | -- | -- | -- | -- | -- | -- | 8,910 | -- | 11,800 |
| Finland | -- | -- | -- | -- | -- | -- | 281 | -- | 78 | 39 | -- | 41 |
| France | -- | -- | -- | -- | -- | -- | 15 | -- | -- | 53 | -- | 56 |
| Germany | (6) | -- | -- | 94 | -- | -- | (6) | -- | (6) | 3,410 | 19 | 2,240 |
| Hungary | 9 | -- | 34 | -- | -- | -- | -- | -- | -- | -- | -- | -- |
| India | 11 | -- | -- | -- | -- | (6) | -- | -- | (6) | 57 | -- | -- |
| Japan | (6) | (6) | 1 | -- | -- | -- | (6) | -- | (6) | 1,370 | 56 | 1,880 |
| Korea, Republic of | -- | -- | -- | -- | -- | -- | 1 | -- | 1 | 10 | (6) | 57 |
| Mexico | -- | -- | 2 | 25 | (6) | 24 | (6) | -- | -- | 75,500 | 1,170 | 14,000 |
| Peru | -- | -- | -- | -- | -- | -- | -- | -- | -- | 50,100 | 924 | 79,500 |
| Qatar | -- | -- | -- | 43 | -- | -- | -- | -- | -- | -- | -- | -- |
| Slovakia | -- | -- | -- | 14 | -- | -- | -- | -- | -- | -- | -- | -- |
| Spain | -- | -- | -- | 51 | -- | 203 | (6) | -- | -- | -- | -- | (6) |
| United Kingdom | (6) | -- | -- | (6) | -- | (6) | 5 | 1 | 4 | 138 | -- | -- |
| Zambia | -- | -- | -- | -- | -- | -- | -- | -- | -- | 1,230 | -- | 2,040 |
| Other | (6) | -- | (6) | 1 | -- | 2 | 4 | -- | 28 | 11 | (6) | 26 |
| Total | 11,700 | (6) | 3,300 | 1,190 | 34 | 1,080 | 306 | 1 | 125 | 732,000 | 26,800 | 771,000 |

-- Zero.

¹Data are rounded to no more than three significant digits; may not add to totals shown.

²Harmonized Tariff Schedule of the United States (HTS) code 2603.00.0010. Includes copper ore and concentrates only; excludes copper contained in ore and concentrates of other metals.

³HTS codes 2620.30.0010 and 7401.00.0000. Includes copper matte, ash, and precipitates only; excludes the copper content of mattes and ashes of other metals.

⁴HTS code 7402.00.0000.

⁵HTS codes 7403.11.0000, 7403.12.0000, 7403.13.0000, and 7403.19.0000.

⁶Less than ½ unit.

Source: U.S. Census Bureau.

TABLE 14
U.S. EXPORTS OF UNMANUFACTURED COPPER¹

(Metric tons, copper content)

| Country or locality | Ore and concentrates ² | | | Matte, ash, and precipitates ³ | | | Blister and anodes ⁴ | | | Refined ⁵ | | |
|------------------------|-----------------------------------|----------|----------------------|---|----------|----------------------|---------------------------------|----------|----------------------|----------------------|----------|----------------------|
| | 2023 | | | 2023 | | | 2023 | | | 2023 | | |
| | 2022 | December | January– December | 2022 | December | January– December | 2022 | December | January– December | 2022 | December | January– December |
| Belgium | 70 | 29 | 126 | 5,950 | 335 | 5,120 | 211 | 27 | 647 | -- | -- | 140 |
| Bulgaria | 1,540 | -- | -- | -- | -- | -- | -- | -- | -- | -- | -- | -- |
| Canada | 39,800 | 3,860 | 42,400 | 13,500 | 101 | 3,120 | 6,740 | 1,760 | 25,100 | 14,200 | 1,870 | 9,120 |
| China | 56,900 | 3,660 | 53,900 | 378 | 6 | 422 | 60 | -- | 935 | 2,150 | 62 | 660 |
| Costa Rica | -- | -- | 5 | 345 | -- | 4 | -- | -- | 25 | (6) | -- | 3 |
| Germany | 1,590 | -- | -- | 235 | 19 | 293 | 244 | 75 | 245 | 1 | -- | 3,580 |
| India | -- | -- | 9 | 16 | -- | 38 | 1,560 | -- | 274 | 34 | -- | 37 |
| Israel | -- | -- | -- | -- | -- | -- | 115 | 6 | 36 | 98 | -- | 33 |
| Italy | -- | -- | -- | -- | -- | 2 | 155 | 2 | 129 | 10 | -- | 3 |
| Japan | 11,000 | -- | 4,260 | 361 | -- | 87 | 20 | -- | 53 | 23 | -- | 4 |
| Korea, Republic of | 59 | -- | 11 | 189 | 96 | 105 | 1,570 | 76 | 1,240 | 133 | 19 | 90 |
| Madagascar | 1,220 | -- | -- | -- | -- | -- | -- | -- | -- | -- | -- | -- |
| Malaysia | 186 | 39 | 124 | 147 | -- | 2,780 | 168 | 27 | 630 | 51 | 235 | 1,870 |
| Mexico | 232,000 | 17,900 | 230,000 | 30 | -- | 1,560 | 260 | (6) | 130 | 7,680 | 1,320 | 15,700 |
| Netherlands | -- | -- | -- | 40 | 19 | 48 | 4 | -- | -- | 1,070 | -- | 2,010 |
| Philippines | 7,770 | -- | -- | (6) | 170 | 1,020 | 67 | -- | 47 | 35 | -- | -- |
| Poland | -- | -- | -- | 270 | 38 | 999 | -- | -- | -- | -- | -- | -- |
| Singapore | -- | -- | 5 | 414 | -- | 181 | 40 | -- | 2 | 22 | (6) | 80 |
| Slovakia | -- | -- | -- | 1,210 | 5 | 392 | -- | -- | -- | -- | -- | -- |
| Spain | 26 | -- | -- | 1,510 | 189 | 2,580 | 42 | 20 | 178 | 376 | 39 | 218 |
| Taiwan | -- | -- | 6,000 | 86 | -- | 18 | 137 | -- | 45 | 25 | -- | 14 |
| Thailand | -- | -- | -- | 158 | -- | 13 | 94 | 3 | 144 | -- | -- | 1 |
| Turkey | -- | -- | -- | 233 | -- | 159 | 20 | -- | 40 | 20 | -- | -- |
| United Kingdom | -- | -- | -- | 4 | -- | 4 | 40 | -- | 12 | 1,630 | -- | 7 |
| Other | 718 | 29 | 4,960 | 194 | 21 | 285 | 378 | 24 | 337 | 57 | 1 | 818 |
| Total | 353,000 | 25,500 | 341,000 | 25,200 | 998 | 19,200 | 11,900 | 2,020 | 30,300 | 27,600 | 3,540 | 34,400 |

-- Zero.

¹Data are rounded to no more than three significant digits; may not add to totals shown.

²Schedule B of the United States code 2603.00.0010. Includes copper ore and concentrates only; excludes copper contained in ore and concentrates of other metals.

³Schedule B codes 2620.30.0000, 7401.00.0010, and 7401.00.0050. Includes copper matte, ash, and precipitates only; excludes the copper content of mattes and ashes of other metals.

⁴Schedule B code 7402.00.0000.

⁵Schedule B codes 7403.11.0000, 7403.12.0000, 7403.13.0000, and 7403.19.0000.

⁶Less than ½ unit.

Source: U.S. Census Bureau.

TABLE 15
U.S. IMPORTS FOR CONSUMPTION OF COPPER SCRAP¹

(Metric tons, gross weight)

| Country or locality | Unalloyed ² | | | Alloyed ³ | | |
|----------------------------------|------------------------|----------|----------------------|----------------------|----------|----------------------|
| | 2023 | | | 2023 | | |
| | 2022 | December | January– December | 2022 | December | January– December |
| Antigua and Barbuda | -- | -- | -- | 188 | 13 | 139 |
| Bahamas, The | -- | -- | -- | 612 | 82 | 606 |
| Barbados | -- | -- | -- | 326 | 25 | 168 |
| Bermuda | 12 | -- | 27 | 90 | 13 | 107 |
| Bolivia | 46 | -- | -- | 106 | -- | 99 |
| Brazil | 14 | -- | 113 | 69 | -- | 230 |
| Canada | 17,600 | 920 | 15,100 | 41,800 | 2,310 | 32,200 |
| Cayman Islands | -- | -- | -- | 243 | 21 | 214 |
| Colombia | 196 | 20 | 150 | 106 | 29 | 131 |
| Costa Rica | 712 | 76 | 829 | 1,350 | 91 | 1,020 |
| Dominican Republic | 1,350 | 53 | 1,020 | 2,090 | 94 | 1,330 |
| Ecuador | 24 | -- | -- | 57 | -- | 120 |
| El Salvador | -- | -- | -- | 1,090 | 77 | 861 |
| Germany | 260 | 37 | 502 | 50 | -- | 85 |
| Grenada | -- | -- | -- | 72 | 14 | 155 |
| Guatemala | -- | -- | -- | 309 | 42 | 280 |
| Haiti | -- | -- | -- | 104 | -- | 192 |
| Honduras | 24 | -- | 49 | 787 | 109 | 1,140 |
| Jamaica | 7 | 5 | 5 | 461 | 38 | 396 |
| Mexico | 12,200 | 1,390 | 13,200 | 42,900 | 3,340 | 45,100 |
| Nicaragua | -- | -- | -- | 194 | -- | 35 |
| Panama | 1,190 | 153 | 961 | 405 | 60 | 627 |
| Peru | -- | -- | -- | 225 | -- | 96 |
| Saudi Arabia | -- | -- | -- | 134 | -- | -- |
| Sint Maarten | 1 | -- | -- | 54 | 35 | 256 |
| Saint Lucia | 25 | -- | -- | 269 | 25 | 181 |
| Saint Vincent and the Grenadines | -- | -- | -- | 91 | 9 | 133 |
| Suriname | 360 | 22 | 264 | 69 | -- | 83 |
| Uruguay | 73 | -- | 45 | 20 | -- | 15 |
| Vietnam | 62 | -- | -- | 50 | -- | -- |
| Other | 75 | -- | 100 | 401 | 53 | 618 |
| Total | 34,200 | 2,680 | 32,300 | 94,700 | 6,480 | 86,500 |

-- Zero.

¹Data are rounded to no more than three significant digits; may not add to totals shown.

²Harmonized Tariff Schedule of the United States (HTS) codes 7404.00.3020 and 7404.00.6020.

³HTS codes 7404.00.3045, 7404.00.3055, 7404.00.3065, 7404.00.3090, 7404.00.6045, 7404.00.6055, 7404.00.6065, and 7404.00.6090.

Source: U.S. Census Bureau.

TABLE 16
U.S. EXPORTS OF COPPER SCRAP¹

(Metric tons, gross weight)

| Country or locality | Unalloyed ² | | | | | | | Alloyed ³ | | | | |
|------------------------|------------------------|----------|----------------------|----------|----------------------|----------|----------------------|----------------------|------------|----------------------|--------------|----------------------|
| | 2023 | | | | | | | 2023 | | | | |
| | 2022 | No. 1 | | No. 2 | | Other | | 2022 | Segregated | | Unsegregated | |
| | | December | January– December | December | January– December | December | January– December | | December | January– December | December | January– December |
| Austria | 1,300 | (4) | 237 | -- | 693 | -- | -- | 1,210 | -- | 1,200 | 19 | 648 |
| Belgium | 33,200 | 1,200 | 12,000 | 489 | 9,370 | 664 | 5,280 | 8,860 | 39 | 931 | 609 | 6,510 |
| Canada | 60,900 | -- | -- | -- | -- | 4,460 | 69,600 | 46,200 | -- | -- | 1,360 | 26,000 |
| China | 260,000 | 8,690 | 84,500 | 5,380 | 49,500 | 16,600 | 155,000 | 31,900 | 1,660 | 20,600 | 2,140 | 17,200 |
| Germany | 15,400 | 875 | 11,800 | 178 | 1,370 | 273 | 5,910 | 15,300 | -- | 582 | 798 | 11,300 |
| Greece | 8,830 | 119 | 4,260 | 60 | 100 | 20 | 1,260 | 2,170 | -- | 74 | -- | 1,490 |
| Hong Kong | 16,800 | 158 | 1,120 | 1,460 | 10,100 | 501 | 6,880 | 3,760 | 76 | 712 | 393 | 3,080 |
| India | 19,900 | 426 | 8,670 | 202 | 1,810 | 699 | 8,970 | 65,700 | 1,280 | 17,600 | 2,680 | 36,300 |
| Japan | 25,400 | 337 | 4,330 | 677 | 10,300 | 296 | 3,870 | 6,980 | 59 | 824 | 270 | 5,600 |
| Korea, Republic of | 42,200 | 842 | 10,700 | 460 | 5,190 | 1,020 | 10,100 | 11,400 | 338 | 3,370 | 476 | 10,100 |
| Malaysia | 24,700 | 1,410 | 14,000 | 525 | 4,240 | 1,820 | 12,600 | 41,700 | 836 | 6,830 | 2,930 | 34,500 |
| Mexico | 3,120 | 101 | 2,400 | (4) | 4 | 10 | 252 | 8,380 | -- | 292 | 27 | 1,570 |
| Netherlands | 7,600 | 14 | 1,070 | 79 | 294 | 40 | 842 | 1,540 | -- | 81 | -- | 951 |
| Pakistan | 1,020 | -- | 371 | -- | 70 | 20 | 83 | 26,300 | -- | 122 | 1,200 | 16,700 |
| Philippines | 1,660 | -- | 526 | -- | -- | -- | 495 | 757 | 5 | 93 | 40 | 686 |
| Poland | 15,700 | 137 | 3,350 | 59 | 80 | 808 | 10,600 | 1,030 | -- | 20 | 20 | 447 |
| Singapore | 1,210 | -- | 1,710 | -- | 41 | -- | -- | 264 | -- | -- | 19 | 402 |
| Slovakia | 1,550 | 35 | 781 | -- | -- | -- | -- | 2,500 | 332 | 1,070 | 174 | 504 |
| Spain | 3,860 | 59 | 596 | 20 | 118 | -- | 952 | 7,380 | 39 | 1,060 | 313 | 3,540 |
| Sweden | 581 | -- | 30 | -- | -- | -- | -- | 1,940 | -- | -- | -- | 278 |
| Taiwan | 13,100 | 444 | 2,690 | 155 | 1,580 | 979 | 5,150 | 4,440 | 19 | 296 | 379 | 3,970 |
| Thailand | 23,900 | 773 | 7,560 | 135 | 466 | 3,200 | 23,600 | 39,600 | 385 | 3,750 | 2,830 | 31,800 |
| Turkey | 1,020 | -- | 572 | -- | -- | -- | -- | 2,320 | -- | 24 | 160 | 1,120 |
| United Arab Emirates | 766 | -- | 295 | -- | -- | -- | 19 | 5,790 | -- | 45 | 38 | 7,580 |
| Vietnam | 139 | -- | 1,020 | -- | 226 | -- | 1,170 | 929 | -- | 88 | -- | 241 |
| Other | 2,180 | 19 | 796 | 99 | 526 | 33 | 495 | 2,400 | 66 | 456 | 21 | 1,430 |
| Total | 586,000 | 15,600 | 175,000 | 9,980 | 96,000 | 31,400 | 323,000 | 341,000 | 5,130 | 60,100 | 16,900 | 224,000 |

-- Zero.

¹Data are rounded to no more than three significant digits; may not add to totals shown.

²Schedule B of the United States codes 7404.00.0010 and 7404.00.0015 (no. 1), 7404.00.0025 (no. 2), and 7404.00.0030 (other).

³Schedule B codes for segregated alloyed copper scrap are 7404.00.0041, 7404.00.0046, 7404.00.0051, 7404.00.0056, 7404.00.0061, 7404.00.0066, and 7404.00.0075. Schedule B codes for unsegregated alloyed copper scrap are 7404.00.0085 and 7404.00.0095.

⁴Less than ½ unit.

Source: U.S. Census Bureau.