

# Mineral Industry Surveys

**For information, contact:**

Désirée E. Polyak, Molybdenum Commodity Specialist  
 National Minerals Information Center  
 Telephone: (703) 648-4909  
 Email: dpolyak@usgs.gov

Sidney Deloach-Overton (Data)

Telephone: (703) 648-4927

Email: sdeloach-overton@usgs.gov

Internet: <https://www.usgs.gov/centers/national-minerals-information-center/mineral-industry-surveys>

## MOLYBDENUM IN JANUARY 2026

Domestic production of molybdenum in concentrate was 3,880 metric tons (t) in January 2026, an increase from 3,870 t in December 2025 and an 18 percent increase from the 3,280 t produced in January 2025 (fig. 1, table 1).

In January 2026, exports of molybdenum ore and concentrates (both roasted and unroasted) totaled approximately 3,470 t (gross weight), 15 percent more than those in December 2025 and 19 percent less than those in January 2025 (table 2). In January 2026, U.S. imports of molybdenum ore and concentrates (both roasted and unroasted) totaled approximately 2,080 t (gross weight) (table 4).

averaged \$23.663 per pound of molybdenum content in January 2026, an 8 percent increase compared with \$21.850 per pound of molybdenum content in December 2025 (fig. 2). The monthly price for European FeMo, 65–70 percent molybdenum content, averaged \$55.188 per kilogram (\$25.033 per pound) of molybdenum content in January 2026, a 7 percent increase compared with \$51.578 per kilogram (\$23.395 per pound) of molybdenum content in December 2025.

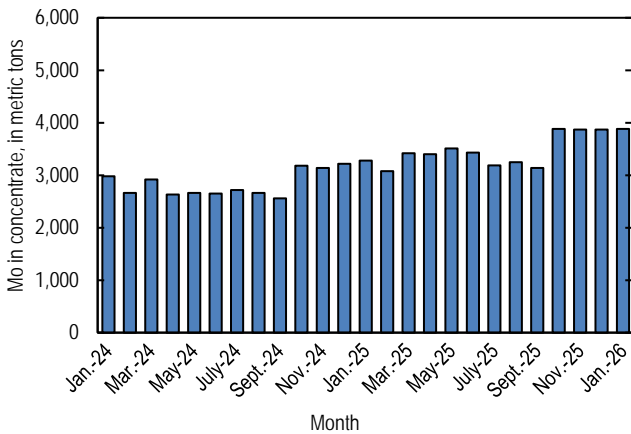


Figure 1. Monthly domestic production of molybdenum (Mo) in concentrate from January 2024 through January 2026. (May include revisions to previously published data.)

### Prices

According to Argus Non-Ferrous Markets, the monthly price for U.S. ferromolybdenum (FeMo), 65 percent molybdenum content, averaged \$27.938 per pound of molybdenum content in January 2026, a 2 percent increase compared with \$27.300 per pound of molybdenum content in December 2025. U.S. molybdenum oxide prices, 57 percent molybdenum content,

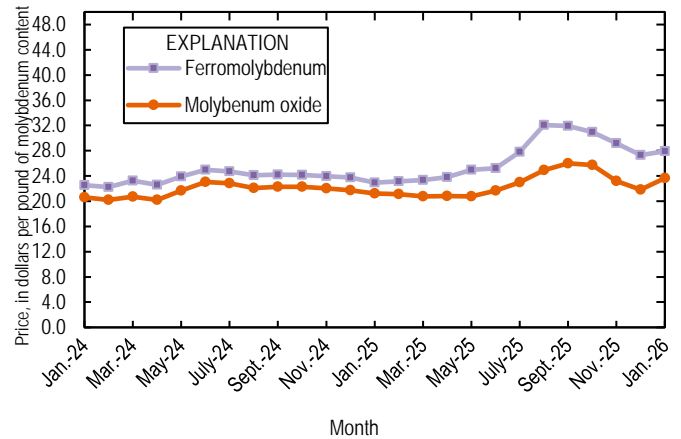


Figure 2. Average monthly prices for U.S. ferromolybdenum and molybdenum oxide from January 2024 through January 2026. Source: Argus Media, Argus Non-Ferrous Markets.

### Industry News

Centerra Gold Inc. (Toronto, Ontario, Canada) suspended operations at its Langeloth metallurgical facility in Pennsylvania following a chemical explosion on January 29, 2026. The company reported no fatalities and indicated there was no sign of a significant environmental release. Langeloth was assessing its expected downtime and planned to provide an update when more information became available (Centerra Gold Inc., 2026).

## Reference Cited

Centerra Gold Inc., 2026, Centerra Gold reports explosion at Langeloth; no fatalities or significant environmental releases: Toronto, Ontario, Canada, January 30, accessed March 24, 2026, at <https://www.centerragold.com/investor-news/news-details/2026/Centerra-Gold-Reports-Explosion-at-Langeloth-No-Fatalities-or-Significant-Environmental-Releases/default.aspx>.

### **List Services**

*List services and web feed subscribers are the first to receive notification of USGS minerals information publications and data releases. For information on how to subscribe, go to <https://www.usgs.gov/centers/national-minerals-information-center/minerals-information-publication-list-services>.*

### **Data Release**

*This report is considered preliminary and for informational purposes only. Raw data from this and other reports from the National Minerals Information Center are available at <https://www.usgs.gov/centers/national-minerals-information-center>.*

## **GENERAL INFORMATION**

This publication is provided by the National Minerals Information Center (NMIC), U.S. Geological Survey (USGS).

Includes data available through March 20, 2026, unless otherwise noted.

NMIC data included in Excel tables of the Minerals Yearbook Chapters and Minerals Industry Surveys are considered preliminary, for informational purposes only.

Comprehensive data releases and list services for NMIC publications are available at <https://www.usgs.gov/centers/national-minerals-information-center>.

Data in these tables may not include granular footnotes.

Unless otherwise noted, totals, United States (U.S.) data, and estimated data are rounded to no more than three significant digits, except "Primary production," prices, and unit values; may not add to totals shown. Data may include revisions to previously published data.

## **FOOTNOTES AND TERMINOLOGY**

Year-to-date indicates the sum of all months or quarters for the given year to the given period.

Estimated data contained in a row or column are marked with a superscript "e." Preliminary data contained in a row or column are marked with a superscript "p."

Do, ditto. NA, not available. No., number. W, withheld to avoid disclosing company proprietary data. —, not applicable. <0.5, less than half a unit.

Mo - Chemical symbol and abbreviation for molybdenum.

## **TRADE DATA**

Trade data is sourced from the U.S. Census Bureau (<https://usatrade.census.gov/>). "HTS" indicates the Harmonized Tariff Schedule of the United States code.

"Schedule B" indicates the Schedule B of the United States number.

Imports refers to "imports for consumption." Import valuation is customs value, free-alongside-ship basis.

Exports refers to "domestic exports." Export valuation is on a free-alongside-ship basis.

## **CONTACT**

For questions on this report, please contact Desiree Polyak, [dpolyak@usgs.gov](mailto:dpolyak@usgs.gov).

If you are an industry producer or consumer and would like to contribute to NMIC industry surveys, please contact Sidney DeLoach-Overton, [sdeloach-overton@usgs.gov](mailto:sdeloach-overton@usgs.gov).

**Table 1.** U.S. salient molybdenum concentrate statistics.

[Table includes annual or quarterly published data from Freeport-McMoran Inc. (2025–2026) that has been adjusted by the USGS to reflect estimated monthly data. Data are in metric tons, molybdenum content.]

<b>Period</b>	<b>Production</b>	<b>Shipments<sup>1,2</sup></b>
<b>2025</b>		
January	3,280	3,420
February	3,080	3,030
March	3,420	3,370
April	3,400	3,400
May	3,510	3,490
June	3,430	3,390
July	3,190	3,170
August	3,250	3,220
September	3,140	3,200
October	3,880	3,680
November	3,870	3,430
December	3,870	4,190
<b>January–December</b>	<b>41,300</b>	<b>41,000</b>
<b>2026</b>		
January	3,880	3,960

<sup>1</sup>As reported by producers.

<sup>2</sup>Shipments include sales to domestic customers, sales for export, and transfers to other company plants.

**Table 2.** U.S. exports of molybdenum ores and concentrates (including roasted and unroasted concentrates). By country or locality.

[Data are in kilograms, gross weight.]

Country or locality	2025		2026	
	January–December	January	December	January
Bangladesh	0	0	0	18,200
Belgium	2,050,000	102,000	407,000	296,000
Brazil	219,000	3,130	49,200	4,030
Canada	653,000	60,300	43,700	24,900
Chile	1,480,000	25,000	121,000	334,000
China	3,220,000	747,000	0	0
Ecuador	4,730	1,090	2,040	0
France <sup>1</sup>	13,300	0	0	0
India	872,000	35,700	48,300	29,700
Italy	50,500	10,600	0	0
Japan	3,080,000	196,000	337,000	273,000
Korea, Republic of	718,000	34,200	20,300	38,000
Malaysia	138,000	0	0	24,300
Mexico	1,800,000	0	216,000	126,000
Netherlands	21,300,000	1,570,000	900,000	1,990,000
Sweden	92,200	92,200	0	0
Taiwan	51,700	0	42,600	1,950
Thailand	678,000	0	157,000	132,000
United Arab Emirates	196	0	0	0
United Kingdom	8,030,000	1,350,000	686,000	164,000
Vietnam	541,000	40,000	2,140	22,500
<b>Total</b>	<b>45,000,000</b>	<b>4,270,000</b>	<b>3,030,000</b>	<b>3,470,000</b>

<sup>1</sup>Includes Mayotte.

**Table 3.** U.S. exports of ferromolybdenum, by country or locality.  
 [Data are in kilograms, molybdenum content.]

Country or locality	2025		2026	
	January–December	January	December	January
Argentina	2,830	0	0	0
Canada	198,000	47,200	18,300	14,300
Israel	272	0	0	0
Mexico	586	0	0	317
Sweden	368	0	0	0
<b>Total</b>	202,000	47,200	18,300	14,700

**Table 4.** U.S. imports for consumption of molybdenum products.  
 [Data are in kilograms and thousand dollars.]

Material	2025			2026		
	January–December			January		
	Gross weight	Molybdenum content	Value	Gross weight	Molybdenum content	Value
<b>Molybdenum chemicals</b>						
Oxides and hydroxides	2,620,000	NA	88,600	145,000	NA	5,070
Molybdates of ammonium	714,000	403,000	20,600	21,700	12,300	654
Molybdates (all others)	147,000	58,300	2,920	14,000	5,560	41
Molybdenum orange	225,000	NA	862	36,100	NA	126
<b>Other</b>						
Ores and concentrates, roasted	4,290,000	2,660,000	131,000	53,800	33,000	1,820
Ores and concentrates, other	25,000,000	12,100,000	526,000	2,030,000	937,000	40,900
Ferromolybdenum	4,870,000	3,270,000	160,000	232,000	157,000	8,060
Molybdenum powders	11,000	10,700	782	1,840	1,840	198
Molybdenum unwrought, bars and rods	628,000	626,000	36,400	17,300	17,200	1,160
Molybdenum waste and scrap	1,570,000	1,360,000	84,200	146,000	137,000	8,580
Molybdenum wire	20,400	NA	2,790	676	NA	140
Molybdenum, other	188,000	NA	28,000	11,100	NA	1,970
<b>Total</b>	<b>40,300,000</b>	<b>—</b>	<b>1,080,000</b>	<b>2,710,000</b>	<b>—</b>	<b>68,700</b>