

Mineral Industry Surveys

For information, contact:

Désirée E. Polyak, Molybdenum Commodity Specialist
National Minerals Information Center
Telephone: (703) 648-4909
Email: dpolyak@usgs.gov

Raymond I. Eldridge III (Data)

Telephone: (703) 648-7982

Email: reldridge@usgs.gov

Internet: <https://www.usgs.gov/centers/national-minerals-information-center/mineral-industry-surveys>

MOLYBDENUM IN APRIL 2025

Domestic production of molybdenum in concentrate in April 2025 decreased by 6% compared with the output of the previous month and increased by 22% compared with the output in April 2024 (fig. 1, table 1).

In April 2025, exports of molybdenum ore and concentrates (both roasted and unroasted) totaled approximately 5,530 metric tons (t) (gross weight), a slight increase compared with 5,410 t in March 2025 (table 2). In April 2025, U.S. imports of molybdenum ore and concentrates (both roasted and unroasted) totaled approximately 2,440 t (gross weight), an 8% decrease compared with 2,650 t (gross weight) imported in March 2025 (table 4).

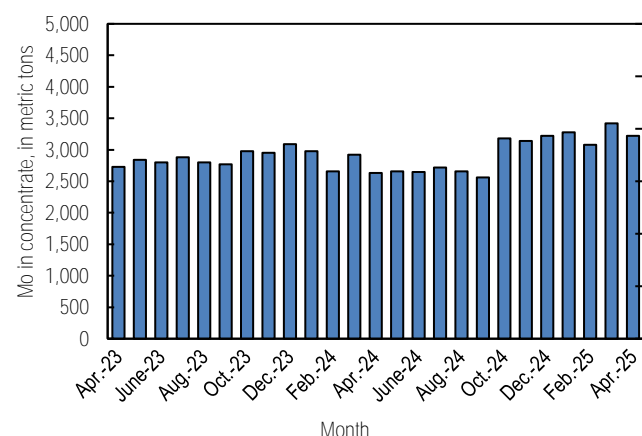


Figure 1. Monthly domestic production of molybdenum (Mo) in concentrate from April 2023 through April 2025 (may include revisions to previously published data).

Prices

According to Argus Non-Ferrous Markets, the monthly price for U.S. ferromolybdenum (FeMo), 65% molybdenum content, averaged \$23.819 per pound in April 2025 compared with \$23.325 per pound in March 2025. U.S. molybdic oxide (MoO_3) prices, 57% molybdenum content, averaged \$20.813 per pound in April 2025 compared with \$20.788 per pound in March 2025 (fig. 2). The monthly price for European FeMo, 65–70%

molybdenum content, averaged \$48.553 per kilogram (\$22.023 per pound) in April 2025 compared with \$49.309 per kilogram (\$22.366 per pound) in March 2025.

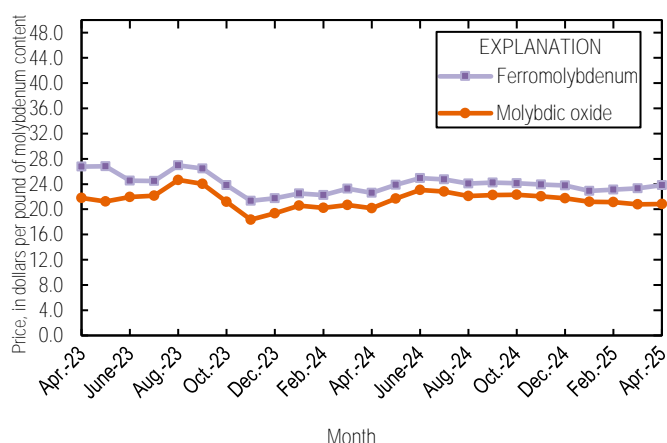


Figure 2. Average monthly prices for U.S. ferromolybdenum and molybdic oxide from April 2023 through April 2025. Source: Argus Media, Argus Non-Ferrous Markets.

Industry News

China Molybdenum Co., Ltd. (CMOC) produced 3,341 t of molybdenum (molybdenum content) in the first quarter of 2025, a 4% decrease compared with the same period in 2024. CMOC remained on track to meet its full-year production target of 12,000–15,000 t, unchanged from production in 2024. CMOC's operations were the Sandaozhuang molybdenum-tungsten mine and the Shangfanggou molybdenum-iron mine in Luanchuan County, Luoyang City, Henan Province, China (Argus Media, Argus Non-Ferrous Markets, 2025; China Molybdenum Co., Ltd., undated).

References Cited

Argus Media, Argus Non-Ferrous Markets, 2025, China's CMOC cuts molybdenum output in January-March: Argus Media Group, April 11. (Accessed May 14, 2025, via www.argusmedia.com.)

China Molybdenum Co., Ltd., [undated], China- molybdenum and tungsten: Luoyang, Henan, China. (Accessed May 15, 2025, at <https://en.cmoc.com/html/Business/China-Mo-W/>.)

A worksheet has been added to the Excel table files that includes a button to remove text and numerical footnotes from data cells. This will allow users to only have numbers in data cells. Please see the worksheet titled RemoveTextButton for instructions in how to use the tool. Note: you must download the excel file to use the tool.

List services and web feed subscribers are the first to receive notification of USGS minerals information publications and data releases. For information on how to subscribe, go to <https://www.usgs.gov/centers/national-minerals-information-center/minerals-information-publication-list-services>.

Table 1. U.S. salient molybdenum concentrate statistics.

[Data are rounded to no more than three significant digits; may not add to totals shown. Table includes annual or quarterly published data from Freeport-McMoran Inc. (2024–2025) that has been adjusted by the USGS to reflect estimated monthly data. Data are in metric tons, molybdenum content. Revised data are marked with a superscript “r”.]

Period	Production	Shipments^{1,2}
2024		
January	2,980	2,980
February	2,660	2,730
March	2,920	2,880
April	2,630	2,640
May	2,660	2,670
June	2,650	2,590
July	2,720	2,690
August	2,660	2,750
September	2,560	2,510
October	3,180	3,210
November	3,140	3,080
December	3,220	3,170
January–December	34,000	33,900
2025		
January	3,280	3,420
February	3,080	3,030
March	3,430 ^r	3,370
April	3,220	3,220
January–April	13,000	13,000

¹As reported by producers.

²Shipments include sales to domestic customers, sales for export, and transfers to other company plants.

Table 2. U.S. exports of molybdenum ores and concentrates (including roasted and unroasted concentrates). By country or locality.
[Data are rounded to no more than three significant digits; may not add to totals shown. Data are in gross weight. Revised data are marked with a superscript "r". Source: U.S. Census Bureau (<https://usatrade.census.gov/>).]

Country or locality	2024			2025		
	January–December	April	January–April	March	April	January–April
Belgium	1,150,000	108,000	559,000	247,000	303,000	915,000
Brazil	442,000	78,800	148,000	0	1,090	4,220
Canada	627,000	72,300	214,000	60,300	54,900	255,000
Chile	608,000	116,000	361,000	44,700	290,000	359,000
China	3,490,000 ^r	403,000	1,890,000 ^r	589,000	608,000	2,250,000
Czechia	217	0	217	0	0	0
Ecuador	1,090	0	0	0	0	1,090
France	1,370	0	0	2,690	0	2,690
Germany	353	0	0	0	0	0
India	215,000	38,000	38,000	54,700	86,900	322,000
Italy	10,700	0	0	0	0	30,500
Japan	2,990,000 ^r	274,000	711,000	33,100	391,000	835,000
Korea, Republic of	741,000	71,600	254,000	139,000	95,300	338,000
Latvia	2,120	2,120	2,120	0	0	0
Lithuania	6,710	0	0	0	0	0
Mexico	536,000	0	0	18,300	117,000	193,000
Netherlands	22,700,000	1,160,000	6,200,000	3,370,000	3,070,000	10,100,000
Singapore	16,200	0	16,200	0	0	0
Sweden	0	0	0	0	0	92,200
Taiwan	118,000	0	0	0	0	0
Thailand	83,900	17,300	40,900	68,300	20,400	153,000
United Arab Emirates	0	0	0	196	0	196
United Kingdom	11,500,000	289,000	4,330,000	744,000	453,000	3,420,000
Vietnam	444,000	2,710	127,000	35,800	44,100	125,000
Total	45,700,000 ^r	2,640,000	14,900,000 ^r	5,410,000	5,530,000	19,400,000

Table 3. U.S. exports of ferromolybdenum, by country or locality.

[Data are rounded to no more than three significant digits; may not add to totals shown. Data are in kilograms, molybdenum content. Revised data are marked with a superscript "r". Source: U.S. Census Bureau (<https://usatrade.census.gov/>).]

Country or locality	2024		2025			
	January–December	April	January–April	March	April	January–April
Argentina	2,140	0	0	2,830	0	2,830
Canada	160,000 ^r	16,800 ^r	23,300 ^r	13,900	0	69,700
Israel		0	0	0	272	272
Mexico	282,000	30,000 ^r	188,000 ^r	315	0	315
United Kingdom	211	0	0	0	0	0
Total	445,000	46,800 ^r	212,000 ^r	17,100	272	73,100

Table 4. U.S. imports for consumption of molybdenum products.

[Data are rounded to no more than three significant digits; may not add to totals shown. Data are in kilograms, unless otherwise specified. NA Not available; — Not applicable. Revised data are marked with a superscript "r". Source: U.S. Census Bureau (<https://usatrade.census.gov/>).]

Material	2024			2025					
	January–December			April			January–April		
	Gross weight	Molybdenum content	Value ¹ (thousand dollars)	Gross weight	Molybdenum content	Value ¹ (thousand dollars)	Gross weight	Molybdenum content	Value ¹ (thousand dollars)
Molybdenum chemicals									
Oxides and hydroxides	4,280,000	NA	\$141,000	180,000	NA	\$5,780	1,370,000	NA	\$44,200
Molybdates of ammonium	1,130,000	639,000	32,000	62,700	35,400	1,630	268,000	151,000	7,240
Molybdates (all others)	186,000	73,800	3,670	2,510	995	33	37,700	15,000	682
Molybdenum orange	120,000	NA	527	9,690	NA	32	92,300	NA	330
Other									
Ores and concentrates, roasted	2,320,000	1,440,000	68,500	140,000	87,500	3,840	906,000	562,000	25,700
Ores and concentrates, other	27,000,000	13,300,000	542,000	2,300,000	1,130,000	46,000	10,700,000	5,200,000	216,000
Ferromolybdenum	8,080,000	5,440,000	248,000	796,000	545,000	25,300	2,670,000	1,790,000	85,000
Molybdenum powders	76,300	75,200	4,750	463	463	42	4,900	4,660	302
Molybdenum unwrought, bars and rods	999,000	996,000	57,100	85,900	85,800	5,040	326,000	325,000	18,500
Molybdenum waste and scrap	1,740,000 ^r	1,690,000 ^r	96,800 ^r	121,000	110,000	6,720	660,000	614,000	34,700
Molybdenum wire	21,200	NA	2,730	2,090	NA	302	5,960	NA	900
Molybdenum, other	190,000	NA	27,600	17,900	NA	2,820	68,400	NA	9,800
Total	46,200,000	—	1,220,000	3,720,000	—	97,500	17,100,000	—	443,000

¹Customs value.