

Mineral Industry Surveys

For information, contact:

Amy C. Tolcin, Zinc Commodity Specialist
National Minerals Information Center
Telephone: (703) 648-4940
Email: atolcin@usgs.gov

Michelle B. Blackwell (Data)

Telephone: (703) 648-7943

Email: mblackwell@usgs.gov

Internet: <https://www.usgs.gov/centers/national-minerals-information-center/mineral-industry-surveys>

ZINC IN APRIL 2025

Domestic mine production (recoverable) of zinc in April 2025 was estimated to be 53,500 metric tons (t). Average daily (recoverable) mine production in April was 1,780 t, 5% less compared with that in the previous month (revised) and unchanged compared with that in April 2024 (fig. 1, table 2).

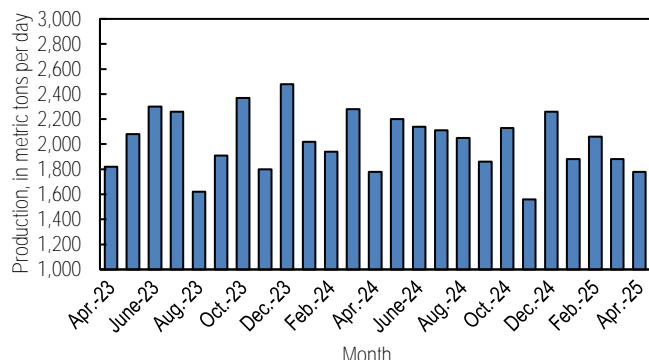


Figure 1. Average daily domestic zinc mine production (recoverable) from April 2023 through April 2025.

Stocks and Prices

There were no London Metal Exchange Ltd. (LME) stocks of Special High Grade (SHG) zinc held in U.S. warehouses at the end of April 2025, unchanged since the end of February 2023. Global LME stocks were 173,900 t at the end of April 2025, 26% more than stocks at the end of the previous month but 32% less than stocks at the end of April 2024. All LME stocks of zinc at the end of April 2025 were held in Asia (fig. 2, table 9). Reported off-warrant stocks of SHG zinc in LME-approved warehouses at the end of April 2025 were 38,700 t; of which 61% were held in Asia, 20% in the United States, and 18% in Europe (London Metal Exchange Ltd., 2025).

The monthly average S&P Global Platts Metals Week North American price for SHG zinc in April 2025 was 140.08 cents per pound, 8% less than that in the previous month and slightly less than that in April 2024. The monthly average LME cash price in April 2025 was \$2,624.75 per metric ton (119.06 cents per pound), 9% less than that in the previous month and 4% less than that in April 2024 (fig. 3, table 8).

The monthly average North American premium to the LME cash price in April 2025 was 21.0 cents per pound, 3% more than that in the previous month and 14% more than that in April 2024 (fig. 3, table 8).

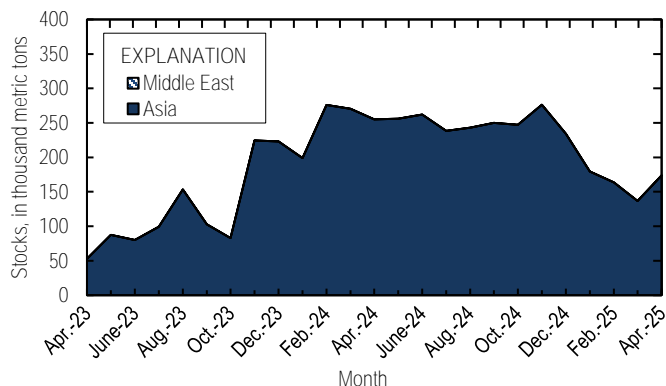


Figure 2. Global LME stocks of Special High Grade zinc, end of month, from April 2023 through April 2025. Source: London Metal Exchange Ltd.

Reference Cited

London Metal Exchange Ltd., 2025, Off-warrant stock reporting: London, United Kingdom, London Metal Exchange Ltd. (Accessed June 27, 2025, via <https://www.lme.com/Market-data/Reports-and-data/Warehouse-and-stocks-reports/Off-warrant-stock-reporting>.)



Figure 3. Average monthly North American price and premium for Special High-Grade zinc from April 2023 through April 2025. The North American price is based on the London Metal Exchange cash price plus the S&P Global Platts Metals Week North American premium. Source: S&P Global Platts Metals Week.

A worksheet has been added to the Excel table files that includes a button to remove text and numerical footnotes from data cells. This will allow users to only have numbers in data cells. Please see the worksheet titled “RemoveTextButton” for instructions on how to use the tool. Note: You must download the Excel file to use the tool.

List services and web feed subscribers are the first to receive notification of USGS minerals information publications and data releases. For information on how to subscribe, go to <https://www.usgs.gov/centers/national-minerals-information-center/minerals-information-publication-list-services>.

Table 1. Salient zinc statistics.

[Data are rounded to no more than three significant digits, except prices; may not add to totals shown. Data are in metric tons, unless otherwise specified. Estimated, and revised data are marked with a superscript “e”, and “r”.]

Zinc statistics	2024	2025		
	January–December	March	April	January–April ¹
Production				
Mine, zinc content of concentrate ²	759,000	59,500	54,700 ^e	233,000 ^e
Mine, recoverable zinc ²	743,000	58,300	53,500 ^e	228,000 ^e
Smelter, refined zinc ^{e,3}	220,000	18,000	18,000	72,000
Consumption				
Refined zinc, apparent ⁴	808,000	71,500	63,700	261,000
Imports for consumption				
Ore and concentrate (zinc content)	18,000	373	254	12,500
Refined zinc	590,000	53,500	45,900	190,000
Exports				
Ore and concentrate (zinc content)	660,000	15,800	10,400	48,800
Refined zinc	2,200 ^r	16	267	702
Price⁵				
London Metal Exchange cash, average, dollars per metric ton	2,776.84	2,887.36	2,624.75	2,784.04
North American, ⁶ average, cents per pound	144.21	151.46	140.08	145.70

¹May include revisions to previously published data.

²Reported zinc content in both zinc and lead concentrates.

³Monthly and annual smelter production data are estimated to avoid disclosing company proprietary data and do not reflect actual production reported to the U.S. Geological Survey.

⁴Smelter production plus imports for consumption minus domestic exports. Apparent consumption may not reflect actual consumption owing to significant changes in unreported stocks.

⁵Special High Grade Zinc.

⁶S&P Global Platts Metals Week.

Table 2. Mine and smelter production of zinc in the United States.

[Data are rounded to no more than three significant digits; may not add to totals shown. Data are in metric tons. Estimated data are marked with a superscript “e”.]

Period	Mine production ¹		Smelter production ^{e, 2}
	Zinc content	Recoverable	
2024			
April	54,700	53,500	18,000
May	69,600	68,100	18,000
June	65,600	64,200	18,000
July	66,700	65,300	18,000
August	65,100	63,700	18,000
September	57,200	55,900	18,000
October	67,400	65,900	18,000
November	47,800	46,700	18,000
December	71,600	70,100	18,000
January–December	759,000	743,000	220,000
2025			
January	59,600	58,300	18,000
February	58,900	57,600	18,000
March	59,500	58,300	18,000
April ^e	54,700	53,500	18,000
January–April ^e	233,000	228,000	72,000

¹Includes the zinc content in both lead and zinc concentrates.

²Monthly and annual smelter production data are estimated to avoid disclosing company proprietary data and do not reflect actual production reported to the U.S. Geological Survey.

Table 3. U.S. shipments of galvanized steel sheet and strip.

[Data are rounded to no more than three significant digits; may not add to totals shown. Source: American Iron and Steel Institute.]

Period	Quantity (metric tons)
2024	
April	1,410,000
May	1,410,000
June	1,350,000
July	1,370,000
August	1,410,000
September	1,350,000
October	1,390,000
November	1,320,000
December	1,320,000
January–April	5,620,000
January–December	16,500,000
2025	
January	1,380,000
February	1,360,000
March	1,380,000
April	1,420,000
January–April	5,560,000

Table 4. U.S. imports for consumption of zinc.

[Data are rounded to no more than three significant digits. Data are in gross weight, unless otherwise specified. Revised data are marked with a superscript “r”. Source: U.S. Census Bureau (<https://usatrade.census.gov/>).]

Material	2024		2025			
	Quantity (metric tons)	Value (thousands)	April		January-April ¹	
			Quantity (metric tons)	Value (thousands)	Quantity (metric tons)	Value (thousands)
Ore and concentrate (zinc content)	17,960 ^r	\$33,100	254	\$418	12,500	\$15,300
Unwrought						
Refined zinc	590,000	1,740,000	45,900	132,000	190,000	581,000
Zinc alloys	4,920	13,400	737	2,260	1,550	4,960
Wrought						
Bars, rods, profiles, wire	4,110 ^r	16,600	539	2,210	1,540	6,440
Plates, sheets, strip, foil	1,590	9,120 ^r	150	820	615	3,300
Ash and residues²						
Hard zinc spelter	0	0	0	0	0	0
Zinc dross and skimmings	5,240	9,760	348	718	1,670	3,060
Other (zinc content)	532	382	(³)	2	104	63
Other						
Powders, flakes, dust	17,700	71,700	2,100	8,340	6,640	26,800
Waste and scrap	11,300	21,600	959	2,000	3,120	6,500
Chemicals						
Lithopone	110	514	33	52	120	238
Zinc chloride	883 ^r	4,880 ^r	235	1,150	404	2,030
Zinc oxide	107,000	323,000	9,100	29,900	36,800	116,000
Zinc sulfate	93,100 ^r	91,000 ^r	5,790	6,270	28,800	30,900
Zinc sulfide	2,220	13,000	361	386	920	3,910

¹May include revisions to previously published data.

²Other than from the manufacture of iron and steel; containing mainly zinc.

³Less than ½ unit.

Table 5. U.S. imports of zinc, by type of material and country or locality.

[Data are rounded to no more than three significant digits; may not add to totals shown. Data are in metric tons, gross weight, unless otherwise specified. Revised data are marked with a superscript "r". Source: U.S. Census Bureau (<https://usatrade.census.gov/>).]

[https://usatrade.census.gov/].

Material and country or locality	General imports			Imports for consumption		
	2024	2025		2024	2025	
		April	January-April ¹		April	January-April ¹
Ore and concentrate (zinc content)						
Canada	3,960	254	1,280	3,960	254	1,280
China	416	0	49	416	0	49
Finland	0	0	5,680	0	0	5,680
Mexico	590	0	0	590	0	0
Peru	12,900	0	5,480	12,900	0	5,480
Other	84	0	0	84	0	0
Total	18,000	254	12,500	18,000	254	12,500
Refined zinc						
Australia	8,150	49	6,320	8,150	49	6,320
Belgium	6,040	191	367	6,040	191	367
Brazil	26,700	0	0	26,700	0	0
Canada	369,000	29,200	123,000	369,000	29,200	123,000
China	571 ^r	572	897	571 ^r	572	897
Denmark	(²)	0	0	(²)	0	0
Finland	487	0	0	487	0	0
Germany	10	0	0	10	0	0
India	17	150	150	17	150	150
Italy	7	0	0	7	0	0
Japan	145	1	2	145	1	2
Kenya	39	0	0	39	0	0
Korea, Republic of	16,500	0	3,330	16,500	0	3,330
Mexico	96,700	9,850	27,900	96,700	9,850	27,900
Netherlands	0	298	298	0	298	298
Peru	65,400	5,530	26,900	65,400	5,530	26,900
Poland	193	0	244	193	0	244
Saudi Arabia	0	36	36	0	36	36
Spain	248	0	0	248	0	0
Switzerland	(²)	0	0	(²)	0	0
Taiwan	5	7	7	5	7	7
Thailand	(²)	0	0	(²)	0	0
Total	590,000	45,900	190,000	590,000	45,900	190,000
Oxide						
Canada	31,000	2,350	10,900	31,000	2,350	10,900
Germany	2,240	364	1,040	2,240	364	1,040
Greece	1,240	333	761	1,240	333	761
India	1,520	257	572	1,520	257	572
Japan	494	97	255	494	80	222
Korea, Republic of	837	59	137	837	59	137
Malaysia	1,310	6	134	1,310	6	134
Mexico	54,400	4,060	17,700	54,400	4,060	17,700
Netherlands	6,940	971	2,960	6,940	971	2,960
Peru	6,010	426	1,960	6,010	426	1,960
Other	1,050	198	430	1,050	198	430
Total	107,000	9,120	36,800	107,000	9,100	36,800

¹May include revisions to previously published data.

²Less than ½ unit.

Table 6. U.S. exports of zinc.

[Data are rounded to no more than three significant digits. Data are in gross weight, unless otherwise specified. Revised data are marked with a superscript “r”. Source: U.S. Census Bureau (<https://usatrade.census.gov/>).]

Material	2024		2025			
	Quantity (metric tons)	Value (thousands)	April		January-April ¹	
			Quantity (metric tons)	Value (thousands)	Quantity (metric tons)	Value (thousands)
Ore and concentrate (zinc content)	660,000	1,310,000	10,400	20,300	48,800	89,700
Unwrought						
Refined zinc	2,200 ^r	7,570 ^r	267	975	702	2,770
Zinc alloys	34,600 ^r	111,000	2,280	7,760	11,200	36,600
Wrought						
Bars, rods, profiles, wire	1,760	10,600	265	1,570	692	3,630
Plates, sheets, strip, foil	6,420	27,600	519	2,430	1,910	8,840
Ash and residues²						
Hard zinc spelter	17,000	35,800	1,940	4,580	7,460	17,200
Other (zinc content)	31,700 ^r	60,500	1,020	1,840	6,200	11,700
Other						
Powders, flakes, dust	7,400 ^r	29,900	577	2,640	2,430	10,200
Waste and scrap	35,400 ^r	47,400	2,170	3,490	8,040	12,800
Chemicals						
Lithopone	231	1,900	22	211	125	1,010
Zinc chloride	1,110	1,260	100	108	364	395
Zinc oxide	74,400 ^r	116,000 ^r	6,290	10,300	27,500	45,400
Zinc sulfate	300	284	18	37	179	169
Zinc sulfide	4,450 ^r	13,400 ^r	307	1,120	417	3,350

¹May include revisions to previously published data.

²Other than from the manufacture of iron and steel; containing mainly zinc.

Table 7. U.S. exports of zinc, by type of material and country or locality.

[Data are rounded to no more than three significant digits; may not add to totals shown. Data are in metric tons, gross weight, unless otherwise specified. Revised data are marked with a superscript "r". Source: U.S. Census Bureau (<https://usatrade.census.gov/>).]

Material and country or locality	2024	2025	
		April	January-April ¹
Ore and concentrate (zinc content)			
Australia	63,500	0	0
Belgium	31,600	0	0
Canada	240,000	6,640	27,400
China	95,800	0	0
Finland	20,600	0	0
Japan	37,600	1,690	2,650
Korea, Republic of	90,500	2,050	16,100
Spain	80,200	0	2,580
Other	42	0	9
Total	660,000	10,400	48,800
Refined zinc			
Canada	790 ^r	7	269
China	606	71	210
India	167	0	0
Korea, Republic of	4	4	4
Mexico	572	186	218
Other	57 ^r	0	1
Total	2,200 ^r	267	702
Oxide			
Belgium	221	26	148
Canada	5,050 ^r	635	2,050
Colombia	201	28	54
Finland	340	100	201
India	524	4	44
Israel	371	0	0
Japan	257	0	83
Mexico	65,700	5,380	24,500
Netherlands	178	17	79
United Kingdom	188	0	66
Other	1,350 ^r	101	307
Total	74,400 ^r	6,290	27,500

¹May include revisions to previously published data.

Table 8. Average prices for Special High Grade Zinc.

[Source: S&P Global Platts Metals Week.]

Period	North American		London Metal Exchange cash ²	
	Premium	Price ¹		
	¢/lb.	¢/lb.	¢/lb.	\$/t
2024				
April	18.5	142.36	123.84	2,730.11
May	18.3	152.31	134.04	2,955.12
June	18.0	145.59	127.57	2,812.35
July	18.0	144.33	126.31	2,784.71
August	18.0	140.91	122.89	2,709.24
September	18.1	146.93	128.83	2,840.31
October	17.5	158.20	140.73	3,102.46
November	17.4	153.44	136.02	2,998.62
December	17.5	155.53	138.01	3,042.53
January–December	18.3	144.21	125.96	2,776.84
2025				
January	17.8	145.92	128.13	2,824.82
February	18.4	145.34	126.97	2,799.23
March	20.5	151.47	130.97	2,887.36
April	21.0	140.08	119.06	2,624.75
January–April	19.4	145.70	126.28	2,784.04

¹S&P Global Platts Metals Week North American price. Based on the London Metal Exchange cash price plus the North American premium.

²Average of the cash buyer price and the cash seller and settlement price.

Table 9. London Metal Exchange (LME) stocks of Special High Grade Zinc, end
[Data are in metric tons. Source: London Metal Exchange, Ltd.]

Period	United States	Asia	Europe	Middle East	Total LME
2024					
April	0	255,000	0	0	255,000
May	0	256,000	0	0	256,000
June	0	262,000	0	0	262,000
July	0	238,000	0	0	238,000
August	0	243,000	0	0	243,000
September	0	250,000	0	0	250,000
October	0	247,000	0	0	247,000
November	0	276,000	0	0	276,000
December	0	234,000	0	0	234,000
2025					
January	0	179,000	0	0	179,000
February	0	164,000	0	0	164,000
March	0	138,000	0	0	138,000
April	0	174,000	0	0	174,000