

Mineral Industry Surveys

For information, contact:

Amy C. Tolcin, Zinc Commodity Specialist
 National Minerals Information Center
 Telephone: (703) 648-4940
 Email: atolcin@usgs.gov

Michelle B. Blackwell (Data)
 Telephone: (703) 648-7943
 Email: mblackwell@usgs.gov
Internet: <https://www.usgs.gov/centers/national-minerals-information-center/mineral-industry-surveys>

ZINC IN OCTOBER 2025

Domestic mine production (recoverable) of zinc in October 2025 was 55,000 metric tons (t). Mine production (recoverable) for the year through October was 566,000 t, 10% less than that in the same period in 2024. Average daily (recoverable) mine production in October was 1,770 t, 1% less compared with that in the previous month and 16% less compared with that in October 2024 (fig. 1, table 2).

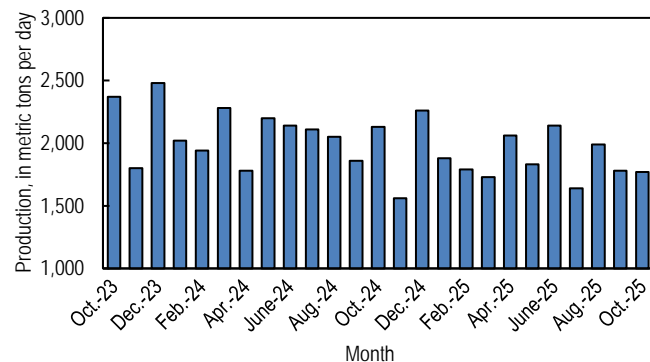


Figure 1. Average daily domestic zinc mine production (recoverable) from October 2023 through October 2025.

Stocks and Prices

There were no London Metal Exchange Ltd. (LME) stocks of Special High Grade (SHG) zinc held in U.S. warehouses at the end of October 2025, unchanged since the end of February 2023. Reported off-warrant stocks of SHG zinc in LME-approved warehouses in the United States at the end of October were 2,291 t, 21% less than 2,898 t at the end of the previous month. Global LME stocks were 33,825 t at the end of October 2025, 16% less than stocks at the end of the previous month and 86% less than stocks at the end of October 2024. All LME stocks of zinc at the end of October 2025 were held in Asia (fig. 2, table 9) (London Metal Exchange Ltd., 2026).

The monthly average S&P Global Platts Metals Week North American price for SHG zinc in October 2025 was 162.06 cents

per pound, 7% more compared with 151.90 cents per pound in the previous month and 2% more compared with 158.20 cents per pound in October 2024. The monthly average LME cash price in October 2025 was \$3,148.45 per metric ton (142.81 cents per pound), 7% more compared with \$2,929.48 per metric ton (132.88 cents per pound) in the previous month and 1% more compared with \$3,102.46 per metric ton (140.73 cents per pound) in October 2024 (fig. 3, table 8).

The monthly average North American premium to the LME cash price in October 2025 was 19.2 cents per pound, 1% more compared with 19.0 cents per pound in the previous month and 10% more compared with 17.5 cents per pound in October 2024 (fig. 3, table 8).

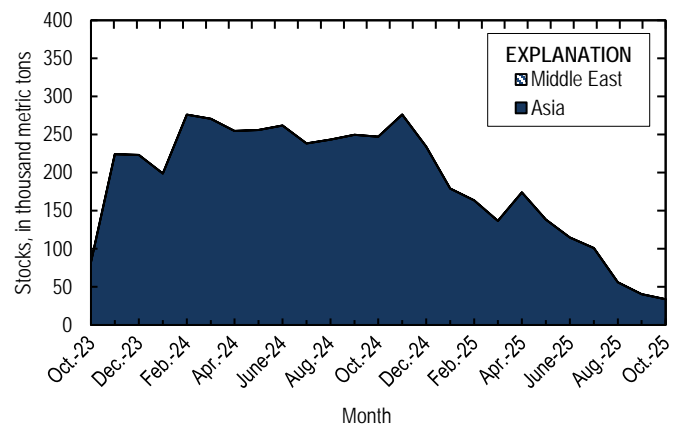


Figure 2. Global LME stocks of Special High Grade zinc, end of month, from October 2023 through October 2025. Source: London Metal Exchange Ltd.

Reference Cited

London Metal Exchange Ltd., 2026, Off-warrant stock reporting: London, United Kingdom, London Metal Exchange Ltd. (Accessed February 19, 2026, via <https://www.lme.com/Market-data/Reports-and-data/Warehouse-and-stocks-reports/Off-warrant-stock-reporting>.)

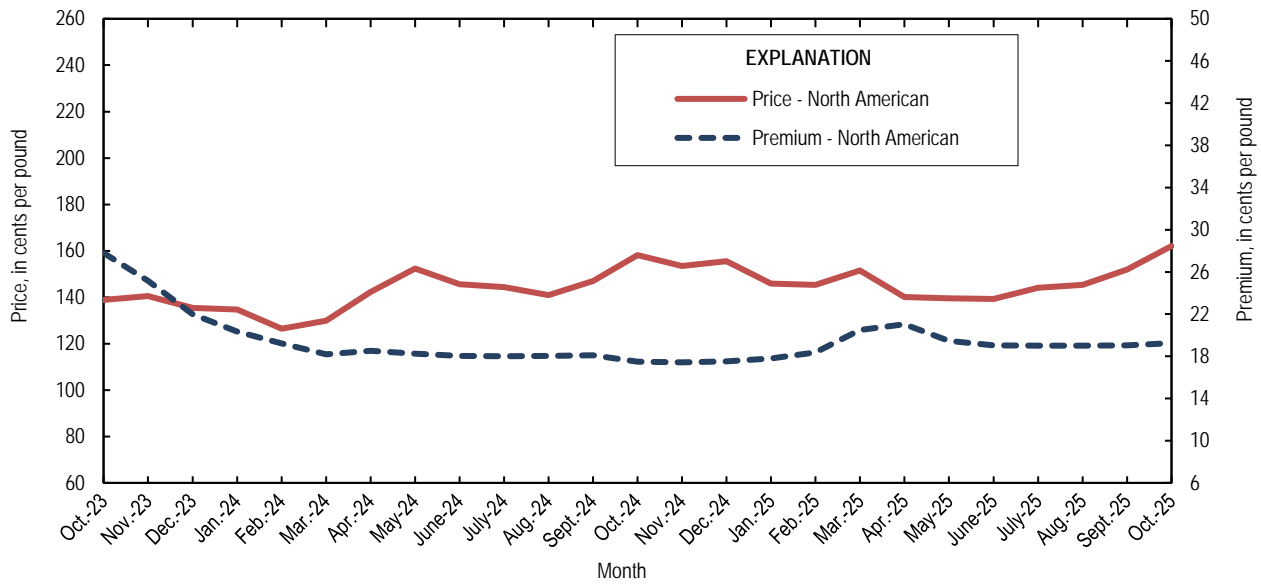


Figure 3. Average monthly North American price and premium for Special High Grade zinc from October 2023 through October 2025. The North American price is based on the London Metal Exchange cash price plus the S&P Global Platts Metals Week North American premium. Source: S&P Global Platts Metals Week.

A worksheet has been added to the Excel table files that includes a button to remove text and numerical footnotes from data cells. This will allow users to only have numbers in data cells. Please see the worksheet titled "RemoveTextButton" for instructions on how to use the tool. Note: You must download the Excel file to use the tool.

List services and web feed subscribers are the first to receive notification of USGS minerals information publications and data releases. For information on how to subscribe, go to <https://www.usgs.gov/centers/national-minerals-information-center/minerals-information-publication-list-services>.

Table 1. Salient zinc statistics.

[Data are rounded to no more than three significant digits; may not add to totals shown. Data are in metric tons. Estimated data are marked with a superscript “e”.]

Zinc statistics	2024		2025	
	January–December	September	October	January–October ¹
Production				
Mine, zinc content of concentrate ²	759,000	54,700	56,300	578,000
Mine, recoverable zinc ²	743,000	53,500	55,000	566,000
Smelter, refined zinc ^{e, 3}	220,000	18,000	18,000	180,000
Consumption				
Refined zinc, apparent ⁴	808,000	99,800	75,800	721,000
Imports for consumption				
Ore and concentrate (zinc content)	18,000	4,100	9,640	30,400
Refined zinc	590,000	82,300	58,100	543,000
Exports				
Ore and concentrate (zinc content)	660,000	175,000	90,800	574,000
Refined zinc	2,200	544	349	2,020
Price⁵				
London Metal Exchange cash, average, dollars per metric ton	2,776.84	2,929.48	3,148.45	2,805.25
North American, ⁶ average, cents per pound	144.21	151.90	162.06	146.49

¹May include revisions to previously published data.

²Reported zinc content in both zinc and lead concentrates.

³Monthly and annual smelter production data are estimated to avoid disclosing company proprietary data and do not reflect actual production reported to the U.S. Geological Survey.

⁴Smelter production plus imports for consumption minus domestic exports. Apparent consumption may not reflect actual consumption owing to significant changes in unreported stocks.

⁵Special High Grade Zinc.

⁶S&P Global Platts Metals Week.

Table 2. Mine and smelter production of zinc in the United States.

[Data are rounded to no more than three significant digits; may not add to totals shown. Data are in metric tons. Estimated data are marked with a superscript "e".]

Period	Mine production ¹		Smelter production ^{e, 2}
	Zinc content	Recoverable	
2024			
October	67,400	65,900	18,000
November	47,800	46,700	18,000
December	71,600	70,100	18,000
January–December	759,000	743,000	220,000
2025			
January	59,600	58,300	18,000
February	51,300	50,200	18,000
March	54,800	53,600	18,000
April	63,000	61,700	18,000
May	58,100	56,900	18,000
June	65,600	64,200	18,000
July	51,800	50,700	18,000
August	63,200	61,800	18,000
September	54,700	53,500	18,000
October	56,300	55,000	18,000
January–October	578,000	566,000	180,000

¹Includes the zinc content in both lead and zinc concentrates.

²Monthly and annual smelter production data are estimated to avoid disclosing company proprietary data and do not reflect actual production reported to the U.S. Geological Survey.

Table 3. U.S. shipments of galvanized steel sheet and strip.
 [Data are rounded to no more than three significant digits;
 may not add to totals shown. Source: American Iron and
 Steel Institute.]

Period	Quantity (metric tons)
2024	
October	1,390,000
November	1,320,000
December	1,320,000
January–October	13,900,000
January–December	16,500,000
2025	
January	1,380,000
February	1,360,000
March	1,380,000
April	1,420,000
May	1,440,000
June	1,440,000
July	1,460,000
August	1,510,000
September	1,590,000
October	1,510,000
January–October	14,500,000

Table 4. U.S. imports for consumption of zinc.

[Data are rounded to no more than three significant digits. Data are in gross weight, unless otherwise specified. Source: U.S. Census Bureau (<https://usatrade.census.gov/>).]

Material	2024		2025			
	Quantity (metric tons)	Value (thousands)	October		January-October ¹	
			Quantity (metric tons)	Value (thousands)	Quantity (metric tons)	Value (thousands)
Ore and concentrate (zinc content)	18,000	\$33,100	9,640	\$11,100	30,400	\$41,800
Unwrought						
Refined zinc	590,000	1,740,000	58,100	178,000	543,000	1,610,000
Zinc alloys	4,920	13,400	488	1,520	3,500	11,200
Wrought						
Bars, rods, profiles, wire	4,110	16,600	258	1,090	3,380	13,800
Plates, sheets, strip, foil	1,590	9,120	107	420	1,350	7,060
Ash and residues²						
Hard zinc spelter	0	0	0	0	0	0
Zinc dross and skimmings	5,240	9,760	440	976	3,810	7,520
Other (zinc content)	532	382	(³)	2	104	65
Other						
Powders, flakes, dust	17,700	71,700	347	1,520	11,700	47,600
Waste and scrap	11,300	21,600	691	1,180	8,520	15,500
Chemicals						
Lithopone	110	514	32	331	205	1,020
Zinc chloride	883	4,880	54	316	762	3,960
Zinc oxide	107,000	323,000	7,930	23,500	85,200	259,000
Zinc sulfate	93,100	91,000	6,060	6,880	64,500	70,100
Zinc sulfide	2,220	13,000	88	349	1,290	5,590

¹May include revisions to previously published data.

²Other than from the manufacture of iron and steel; containing mainly zinc.

³Less than ½ unit.

Table 5. U.S. imports of zinc, by type of material and country or locality.

[Data are rounded to no more than three significant digits; may not add to totals shown. Data are in metric tons, gross weight, unless otherwise specified. Source: U.S. Census Bureau (<https://usatrade.census.gov/>).]

Material and country or locality	General imports			Imports for consumption		
	2024	2025		2024	2025	
		October	January-October ¹		October	January-October ¹
Ore and concentrate (zinc content)						
Canada	3,960	511	3,770	3,960	511	3,770
China	416	0	94	416	0	94
Finland	0	5,230	10,900	0	5,230	10,900
Ireland	0	3,910	3,910	0	3,910	3,910
Mexico	590	0	0	590	0	0
Peru	12,900	0	11,700	12,900	0	11,700
Other	84	0	0	84	0	0
Total	18,000	9,640	30,400	18,000	9,640	30,400
Refined zinc						
Australia	8,150	0	48,000	8,150	0	48,000
Austria	0	0	197	0	0	197
Belgium	6,040	0	367	6,040	0	367
Brazil	26,700	0	302	26,700	0	302
Canada	369,000	30,500	303,000	369,000	30,500	303,000
China	571	0	1,780	571	0	1,780
Colombia	0	0	75	0	0	75
Denmark	(²)	0	0	(²)	0	0
Finland	487	0	0	487	0	0
Germany	10	0	(²)	10	0	(²)
India	17	(²)	1,220	17	(²)	1,220
Italy	7	0	0	7	0	0
Japan	145	0	4	145	0	4
Kazakhstan	0	0	20	0	0	20
Kenya	39	0	0	39	0	0
Korea, Republic of	16,500	0	8,840	16,500	0	8,840
Mexico	96,700	12,400	80,600	96,700	14,800	80,600
Netherlands	0	0	422	0	0	422
Peru	65,400	12,800	79,400	65,400	12,800	79,400
Poland	193	0	730	193	0	730
Saudi Arabia	0	40	76	0	40	76
Spain	248	0	17,900	248	0	17,900
Switzerland	(²)	0	0	(²)	0	0
Taiwan	5	9,009	21	5	9,009	21
Thailand	(²)	0	0	(²)	0	0
Total	590,000	55,700	543,000	590,000	58,100	543,000
Oxide						
Canada	31,000	2,570	24,300	31,000	2,570	24,300
Germany	2,240	52	2,040	2,240	52	2,040
Greece	1,240	0	785	1,240	0	785
India	1,520	1	713	1,520	1	713
Japan	494	22	429	494	22	396
Korea, Republic of	837	5	164	837	5	164
Malaysia	1,310	48	649	1,310	48	649
Mexico	54,400	4,440	42,500	54,400	4,440	42,500
Netherlands	6,940	155	8,340	6,940	155	8,340
Peru	6,010	486	4,400	6,010	486	4,380
Other	1,050	143	984	1,050	143	984
Total	107,000	7,930	85,300	107,000	7,930	85,200

¹May include revisions to previously published data.

²Less than ½ unit.

Table 6. U.S. exports of zinc.

[Data are rounded to no more than three significant digits. Data are in gross weight, unless otherwise specified. Source: U.S. Census Bureau (<https://usatrade.census.gov/>).]

Material	2024		2025			
	Quantity (metric tons)	Value (thousands)	October		January-October ¹	
			Quantity (metric tons)	Value (thousands)	Quantity (metric tons)	Value (thousands)
Ore and concentrate (zinc content)	660,000	\$1,310,000	90,800	\$200,000	574,000	\$1,210,000
Unwrought						
Refined zinc	2,200	7,570	349	1,250	2,020	7,190
Zinc alloys	34,600	111,000	3,180	9,130	25,300	82,600
Wrought						
Bars, rods, profiles, wire	1,760	10,600	242	992	2,260	10,800
Plates, sheets, strip, foil	6,420	27,600	526	2,420	4,770	21,900
Ash and residues²						
Hard zinc spelter	17,000	35,800	2,140	5,030	17,200	38,700
Other (zinc content)	31,700	60,500	1,630	3,190	16,800	32,200
Other						
Powders, flakes, dust	7,400	29,900	263	1,340	5,210	23,300
Waste and scrap	35,400	47,400	2,000	3,420	21,200	34,000
Chemicals						
Lithopone	231	1,900	15	68	217	1,650
Zinc chloride	1,110	1,260	45	53	873	964
Zinc oxide	74,400	116,000	9,160	14,600	75,100	116,000
Zinc sulfate	300	284	26	25	292	317
Zinc sulfide	4,450	13,400	45	586	2,780	9,830

¹May include revisions to previously published data.

²Other than from the manufacture of iron and steel; containing mainly zinc.

Table 7. U.S. exports of zinc, by type of material and country or locality.
 [Data are rounded to no more than three significant digits; may not add to totals shown.
 Data are in metric tons, gross weight, unless otherwise specified. Source: U.S. Census
 Bureau (<https://usatrade.census.gov/>).]

Material and country or locality	2024	2025	
		October	January-October ¹
Ore and concentrate (zinc content)			
Australia	63,500	0	46,700
Belgium	31,600	25,000	56,700
Canada	240,000	45,600	207,000
China	95,800	0	0
Finland	20,600	0	15,700
Japan	37,600	1,950	42,500
Korea, Republic of	90,500	18,300	111,000
Netherlands	3	0	18,400
Spain	80,200	0	75,400
Other	39	62	126
Total	660,000	90,800	574,000
Refined zinc			
Canada	790	97	791
China	606	102	452
India	167	0	0
Mexico	572	150	754
Other	61	0	27
Total	2,200	349	2,020
Oxide			
Belgium	221	1,070	2,250
Canada	5,050	506	4,310
Colombia	201	0	184
Finland	340	0	341
India	524	15	74
Israel	371	94	360
Japan	257	23	130
Mexico	65,700	7,360	66,300
Netherlands	178	0	234
United Kingdom	188	2	90
Other	1,350	80	828
Total	74,400	9,160	75,100

¹May include revisions to previously published data.

Table 8. Average prices for Special High Grade Zinc.
 [Source: S&P Global Platts Metals Week.]

Period	North American		London Metal Exchange cash ²	
	Premium	Price ¹		
	€/lb.	€/lb.	€/lb.	\$/t
	2024			
October	17.5	158.20	140.73	3,102.46
November	17.4	153.44	136.02	2,998.62
December	17.5	155.53	138.01	3,042.53
January–December	18.3	144.21	125.96	2,776.84
	2025			
January	17.8	145.92	128.13	2,824.82
February	18.4	145.34	126.97	2,799.23
March	20.5	151.47	130.97	2,887.36
April	21.0	140.08	119.06	2,624.75
May	19.5	139.48	120.01	2,645.73
June	19.0	139.24	120.22	2,650.36
July	19.0	144.14	125.12	2,758.41
August	19.0	145.30	126.28	2,783.90
September	19.0	151.90	132.88	2,929.48
October	19.2	162.06	142.81	3,148.45
January–October	19.2	146.49	127.24	2,805.25

¹S&P Global Platts Metals Week North American price. Based on the London Metal Exchange cash price plus the North American premium.

²Average of the cash buyer price and the cash seller and settlement price.

Table 9. London Metal Exchange (LME) stocks of Special High Grade Zinc, end
 [Data are in metric tons. Source: London Metal Exchange, Ltd.]

Period	United States	Asia	Europe	Middle East	Total LME
2024					
October	0	247,075	0	0	247,075
November	0	276,275	0	0	276,275
December	0	234,100	0	0	234,100
2025					
January	0	179,275	0	0	179,275
February	0	163,600	0	0	163,600
March	0	138,200	0	0	138,200
April	0	173,900	0	0	173,900
May	0	138,150	0	0	138,150
June	0	114,900	0	0	114,900
July	0	100,825	0	0	100,825
August	0	55,875	0	0	55,875
September	0	40,500	0	0	40,500
October	0	33,825	0	0	33,825