

# Mineral Industry Surveys

**For information, contact:**

Désirée E. Polyak, Molybdenum Commodity Specialist  
 National Minerals Information Center  
 Telephone: (703) 648-4909  
 Email: dpolyak@usgs.gov

Sidney Deloach-Overton (Data)  
 Telephone: (703) 648-4927  
 Email: sdeloach-overton@usgs.gov

**Internet:** <https://www.usgs.gov/centers/national-minerals-information-center/mineral-industry-surveys>

## MOLYBDENUM IN DECEMBER 2025

Domestic production of molybdenum in concentrate was 3,870 metric tons (t) in both November and December 2025 and increased by 20% compared with the output in December 2024. Domestic production of molybdenum in concentrate increased by 22% in 2025 compared with the output in 2024 (fig. 1, table 1).

In December 2025, exports of molybdenum ore and concentrates (both roasted and unroasted) totaled approximately 3,030 t (gross weight), 25% more than those in November 2025 and 19% less than those in December 2024. Exports of molybdenum ore and concentrates were 2% less in 2025 compared with those in 2024 (table 2). In December 2025, U.S. imports of molybdenum ore and concentrates (both roasted and unroasted) totaled approximately 2,110 t (gross weight). U.S. imports of molybdenum ore and concentrates totaled approximately 29,300 t in 2025 compared with 29,400 t in 2024 (table 4).

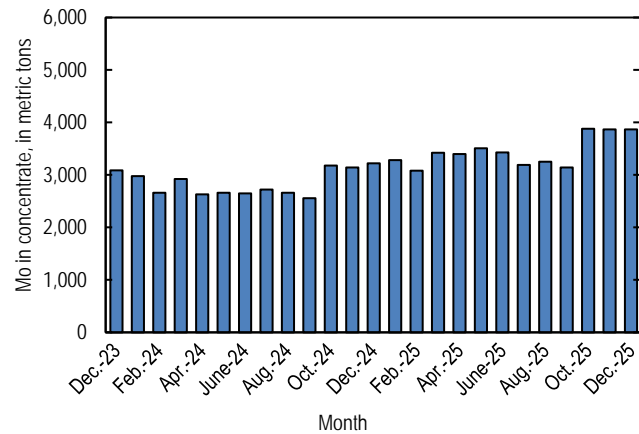


Figure 1. Monthly domestic production of molybdenum (Mo) in concentrate from December 2023 through December 2025. (May include revisions to previously published data.)

### Prices

According to Argus Non-Ferrous Markets, the monthly price for U.S. ferromolybdenum (FeMo), 65% molybdenum content, averaged \$27.300 per pound of molybdenum content in December 2025 compared with \$29.188 per pound of molybdenum content in November 2025. U.S. molybdenum oxide prices, 57% molybdenum content, averaged \$21.850 per pound of molybdenum content in December 2025 compared with \$23.175 per pound of molybdenum content in November 2025 (fig. 2). The monthly price for European FeMo, 65–70% molybdenum content, averaged \$51.578 per kilogram (\$23.395 per pound) of molybdenum content in December 2025 compared with \$54.031 per kilogram (\$24.508 per pound) of molybdenum content in November 2025.

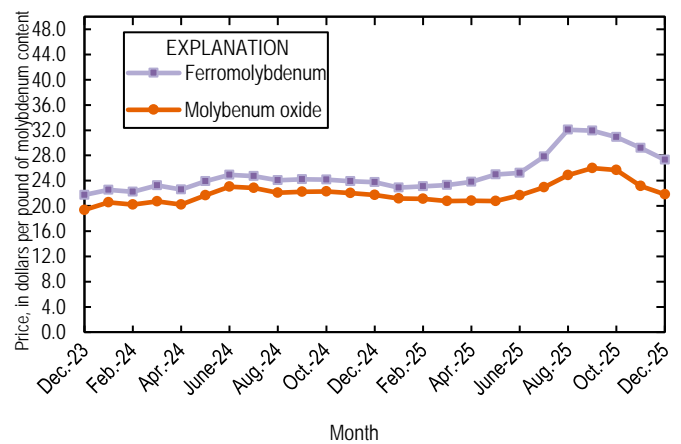


Figure 2. Average monthly prices for U.S. ferromolybdenum and molybdenum oxide from December 2023 through December 2025. Source: Argus Media, Argus Non-Ferrous Markets.

*A worksheet has been added to the Excel table files that includes a button to remove text and numerical footnotes from data cells. This will allow users to only have numbers in data cells. Please see the worksheet titled RemoveTextButton for instructions in how to use the tool. Note: you must download the excel file to use the tool.*

*List services and web feed subscribers are the first to receive notification of USGS minerals information publications and data releases. For information on how to subscribe, go to <https://www.usgs.gov/centers/national-minerals-information-center/minerals-information-publication-list-services>.*

**Table 1.** U.S. salient molybdenum concentrate statistics.

[Data are rounded to no more than three significant digits; may not add to totals shown. Table includes annual or quarterly published data from Freeport-McMoran Inc. (2024–2025) that has been adjusted by the USGS to reflect estimated monthly data. Data are in metric tons, molybdenum content. Revised data are marked with a superscript “r”.]

<b>Period</b>	<b>Production</b>	<b>Shipments<sup>1,2</sup></b>
<b>2024</b>		
January	2,980	2,980
February	2,660	2,730
March	2,920	2,880
April	2,630	2,640
May	2,650	2,670
June	2,650	2,590
July	2,720	2,690
August	2,660	2,750
September	2,560	2,510
October	3,180	3,210
November	3,140	3,080
December	3,220	3,170
<b>January–December</b>	<b>34,000</b>	<b>33,900</b>
<b>2025</b>		
January	3,280	3,420
February	3,080	3,030
March	3,420	3,370
April	3,400	3,400
May	3,510	3,490
June	3,430	3,390
July	3,190	3,170
August	3,250	3,220
September	3,140	3,200
October	3,880 <sup>r</sup>	3,680 <sup>r</sup>
November	3,870 <sup>r</sup>	3,430 <sup>r</sup>
December	3,870	4,190
<b>January–December</b>	<b>41,300</b>	<b>41,000</b>

<sup>1</sup>As reported by producers.

<sup>2</sup>Shipments include sales to domestic customers, sales for export, and transfers to other company plants.

**Table 2.** U.S. exports of molybdenum ores and concentrates (including roasted and unroasted concentrates). By [Data are rounded to no more than three significant digits; may not add to totals shown. Data are in kilograms, gross weight. Revised data are marked with a superscript "r". Source: U.S. Census Bureau (<https://usatrade.census.gov/>).]

Country or locality	2024			2025	
	January–December	December	November	December	January–December
Belgium	1,150,000	72,500	159,000	407,000	2,050,000
Brazil	442,000	197	22,600	49,200	219,000
Canada	627,000	36,900	10,600	43,700	653,000
Chile	608,000	65,400	62,300	121,000	1,480,000
China	3,490,000	199,000	0	0	3,220,000
Czechia	217	0	0	0	0
Ecuador	1,090	0	0	2,040	4,730
France <sup>1</sup>	1,370	395	0	0	13,300
Germany	353	0	0	0	0
India	215,000	60,700	122,000	48,300	872,000
Italy	10,700	0	92	0	50,500
Japan	2,990,000	375,000 <sup>r</sup>	252,000	337,000	3,080,000
Korea, Republic of	741,000	67,600	83,800	20,300	718,000
Latvia	2,120	0	0	0	0
Lithuania	6,710	0	0	0	0
Malaysia	0	0	0	0	138,000
Mexico	536,000	123,000	140,000	216,000	1,800,000
Netherlands	22,700,000	1,030,000 <sup>r</sup>	592,000	900,000	21,300,000
Singapore	16,200	0	0	0	0
Sweden	0	0	0	0	92,200
Taiwan	118,000	0	9,030	42,600	51,700
Thailand	83,900	18,900	107,000	157,000	678,000
United Arab Emirates	0	0	0	0	196
United Kingdom	11,500,000	1,670,000	829,000	686,000	8,030,000
Vietnam	444,000	37,600	46,100	2,140	541,000
<b>Total</b>	<b>45,700,000</b>	<b>3,750,000<sup>r</sup></b>	<b>2,440,000</b>	<b>3,030,000</b>	<b>45,000,000</b>

<sup>1</sup>Includes Mayotte.

**Table 3.** U.S. exports of ferromolybdenum, by country or locality.

[Data are rounded to no more than three significant digits; may not add to totals shown. Data are in kilograms, molybdenum content. Revised data are marked with a superscript "r". Source: U.S. Census Bureau

Country or locality	2024			2025	
	January–December	December	November	December	January–December
Argentina	2,140	0	0	0	2,830
Canada	160,000	34,400 <sup>r</sup>	1,650	18,300	198,000
Israel	0	0	0	0	272
Mexico	282,000	12,200 <sup>r</sup>	0	0	586
Sweden	0	0	0	0	368
United Kingdom	211	0	0	0	0
<b>Total</b>	<b>445,000</b>	<b>46,600<sup>r</sup></b>	<b>1,650</b>	<b>18,300</b>	<b>202,000</b>

**Table 4.** U.S. imports for consumption of molybdenum products.

[Data are rounded to no more than three significant digits; may not add to totals shown. Data are in kilograms, unless otherwise specified. NA Not available; — Not applicable. Source: U.S. Census Bureau (<https://usatrade.census.gov/>).]

Material	2024			2025			2025		
	January–December			December			January–December		
	Gross weight	Molybdenum content	Value <sup>1</sup> (thousand dollars)	Gross weight	Molybdenum content	Value <sup>1</sup> (thousand dollars)	Gross weight	Molybdenum content	Value <sup>1</sup> (thousand dollars)
<b>Molybdenum chemicals</b>									
Oxides and hydroxides	4,280,000	NA	\$141,000	113,000	NA	\$4,160	2,620,000	NA	\$88,600
Molybdates of ammonium	1,130,000	639,000	32,000	6	3	5	714,000	403,000	20,600
Molybdates (all others)	186,000	73,800	3,670	0	0	0	147,000	58,300	2,920
Molybdenum orange	120,000	NA	527	1,590	NA	12	225,000	NA	862
<b>Other</b>									
Ores and concentrates, roasted	2,320,000	1,440,000	68,500	92,800	56,600	2,830	4,290,000	2,660,000	131,000
Ores and concentrates, other	27,000,000	13,300,000	542,000	2,020,000	976,000	46,400	25,000,000	12,100,000	526,000
Ferromolybdenum	8,080,000	5,440,000	248,000	257,000	170,000	9,370	4,870,000	3,270,000	160,000
Molybdenum powders	76,300	75,200	4,750	288	284	28	11,000	10,700	782
Molybdenum unwrought, bars and rods	999,000	996,000	57,100	84,200	83,900	5,480	628,000	626,000	36,400
Molybdenum waste and scrap	1,740,000	1,690,000	96,800	81,100	76,100	5,020	1,570,000	1,360,000	84,200
Molybdenum wire	21,200	NA	2,730	1,510	NA	213	20,400	NA	2,790
Molybdenum, other	190,000	NA	27,600	14,400	NA	2,070	188,000	NA	28,000
<b>Total</b>	<b>46,200,000</b>	<b>—</b>	<b>1,220,000</b>	<b>2,660,000</b>	<b>—</b>	<b>75,600</b>	<b>40,300,000</b>	<b>—</b>	<b>1,080,000</b>

<sup>1</sup>Customs value.